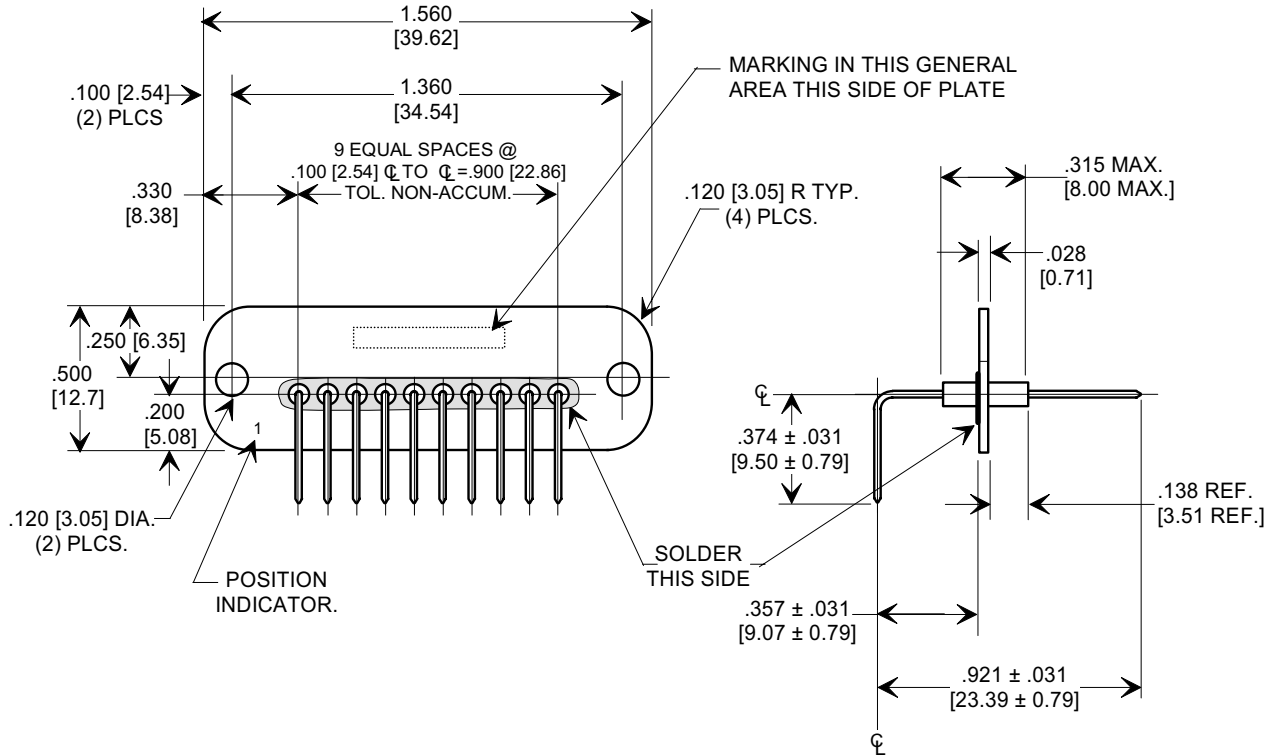
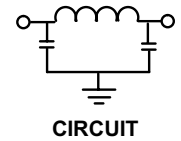
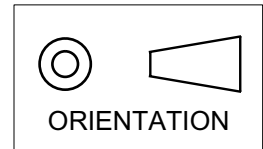


MARKETING SALES DRAWING

DIMENSIONS IN INCHES - DO NOT SCALE THIS DRAWING
 DIMENSIONS IN METRIC - []

Electrical Testing
 per Tusonix standard
 test plans and Mil-Std-202
 Test Methods.



NOTE:

- MATERIALS:**
 PLATE: $.028" \pm .003$ [0.71 ± 0.08] COPPER ALLOY, MATTE TIN FINISH.
 LEADS: $.025" \pm .002$ [0.63 ± 0.05] DIA. COPPER ALLOY, GOLD FINISH.
- MARKING TO BE TUSONIX PART NUMBER AND DATE CODE.
- TUSONIX CATALOG CODE DESCRIPTION : 7912-1000-RC REFERENCE.

Cx (pF)	TOL'S	CIRCUIT	WVDC (+125°C)	IR (MIN.)	CURRENT I _{dc} (A)	MINIMUM NO LOAD INSERTION LOSS @ 25°C (dB) PER MIL-STD-220						
						10 MHz	20 MHz	50 MHz	100 MHz	200 MHz	500 MHz	1 GHz
820	+ 80 % - 20%	π	100	10 GΩ	5	---	3	13	22	30	42	50

X-2015 Rev-0 REVISION RECORD Original Release C.O. 20010906-1-03	0	--TOLERANCES-- Unless Otherwise Specified DECIMAL ± .010 [0.25] ANGLES ±	Title FILTER PLATE ASSEMBLY 10 POSITION
			Drawn L.E. 09-06-01 Scale 1.5 X
			Approved B.Mc. 09-06-01
	TUSONIX TUCSON, ARIZONA		A