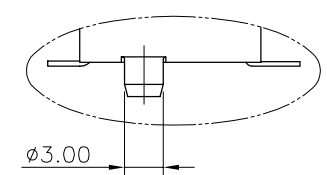
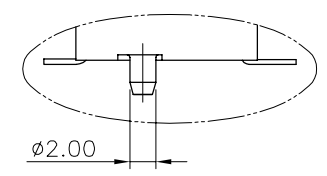
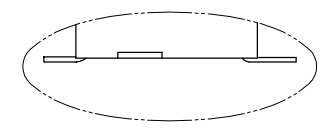
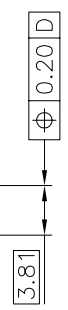
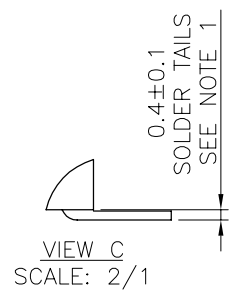
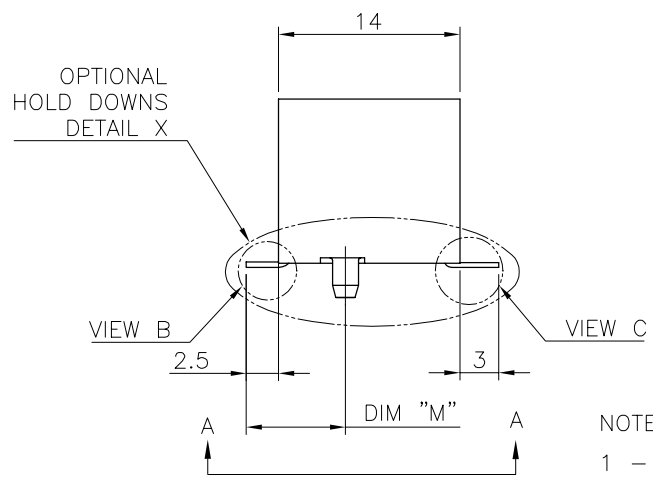
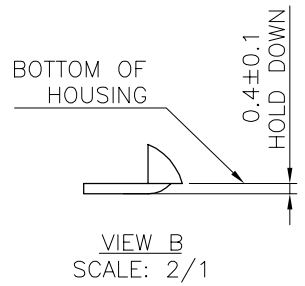
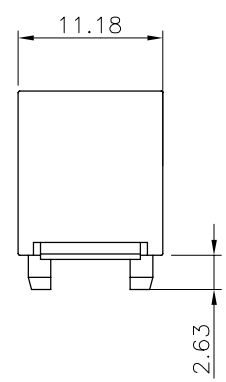
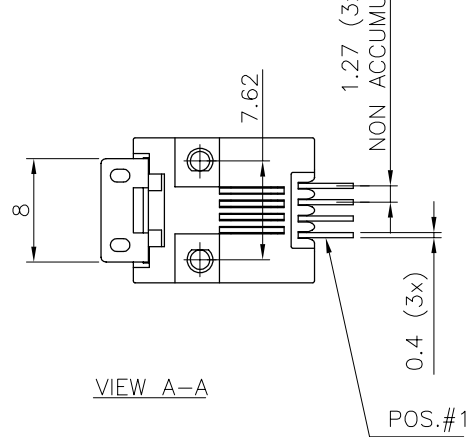


Tous droits réservés. Reproduction ou utilisation sans autorisation écrite du propriétaire.
All rights strictly reserved. Reproduction or use without written authority from the proprietor.
Copyright © Bessone S. A.


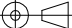

PRODUCT NO.
SEE TABLE



NOTES

- 1 - SOLDER TAILS COPLANARITY: 0.1mm
- 2 - SOLDER TAILS / HOLD DOWN COPLANARITY: 0.15mm

CUSTOMER COPY FOR REFERENCE ONLY

mat'l. code SEE NOTES				tolerances unless otherwise specified			CUSTOMER COPY		 ELECTRONICS www.fciconnect.com	
ltr	ecn no	dr	date	linear	±0.13		projection 	title E-SMT NARROW VERT 4 POS ASSY		
D	V61447	LP	96.06.10							
E	V61650	LP	97.01.02	angles	±2°			product familyMODULAR JACK		code 213
F	F70177	JLC	97.07.11							
G	F80169	MAE	98.03.24	dr	JL CORDIER	97.07.11	size dwg no		sheet 1 of 3	
H	F00498	GCO	00.09.13	engr	AESCHBACHER	97.07.11				
				chr	JL CORDIER	97.07.11	A3 87555			
				appd	M.AE	97.07.11				
sheet		revision	H	G	C					
index		sheet	1	2	3					

PRODUCT NO.

87555-XXXX

CONTACT PLATING
OPTIONS1= GXT 0.76 μ m

PACKAGE OPTIONS

BLISTER PACKAGE

1= LOADED FACE UP

3= PACKAGED IN TUBES

PEG OPTIONS

1= NO PEGS

2= \varnothing 2.00 PEGS3= \varnothing 3.00 PEGSPWB
THRU HOLE SIZE

NO THRU HOLES

 \varnothing 2.25 $^{+0.1}_{-0}$ HOLES \varnothing 3.25 $^{+0.1}_{-0}$ HOLES

DIM 'M'

0

7.64

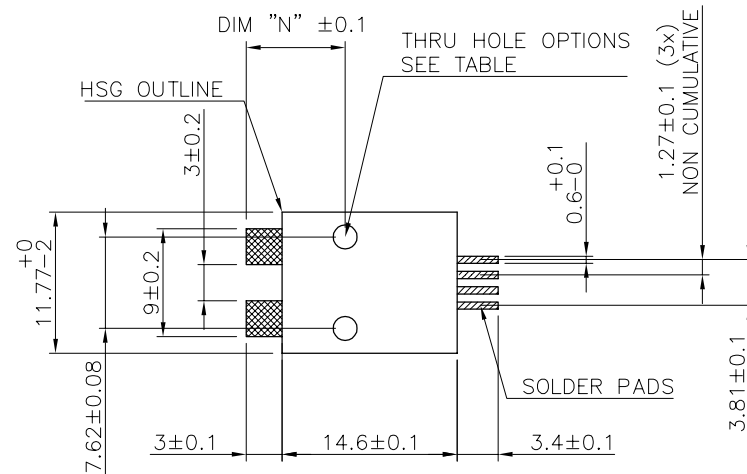
7.44

DIM 'N'

0

8.14

7.94


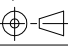
TERMINAL LOADING
OPTIONS1= FULLY
LOADED

RECOMENDED PWB FOOTPRINT

NOTES:

- MATERIAL:
HOUSING: HIGH TEMP. NYLON, COLOR BLACK
TERMINAL: PHOSPHOR BRONZE
- PLATING:
CONTACT AREA: OPTIONAL SEE TABLE
SOLDER TAIL: SnPb 90/10 2 μ m MIN
NO RAW EDGES EXCEPT SOLDER TAIL TIPS

CUSTOMER COPY FOR REFERENCE ONLY

mat'l. code SEE NOTES				tolerances unless otherwise specified		CUSTOMER COPY	 ELECTRONICS www.fciconnect.com	title E-SMT NARROW VERT 4 POS ASSY	product family MODULAR JACK	code 213
ltr	ecr no	dr	date	linear	\pm 0.13					
E	V61650	LP	97.01.02			projection				
F	F70177	JLC	97.07.11							
G	F80169	DLE	98.05.28	angles	\pm 2'					
				dr	JL CORDIER 97.07.11					
				engr	AE SCHBACHER 97.07.11					
				chr	JL CORDIER 97.07.11					
				appd	M.AE 97.07.11					
sheet index	revision sheet					scale 5:2				

PRODUCT NO.

87555-XXXX

CONTACT PLATING
OPTIONS

1 = GXT .76um

PACKAGE OPTIONS

1 = BLISTER PACKAGE
1 = LOADED FACE UP

HOUSING P/N

1

PEG OPTIONS

NO PEGS

TERMINAL P/N

1

TERMINAL LOADING
OPTIONSFULLY LOADED
4 POSITION

LTR	PART NAME	QTY
1	MOD JACK	300
2	TAPE	1
3	REEL	1
4	COVER TAPE	1

SCALE 1:4

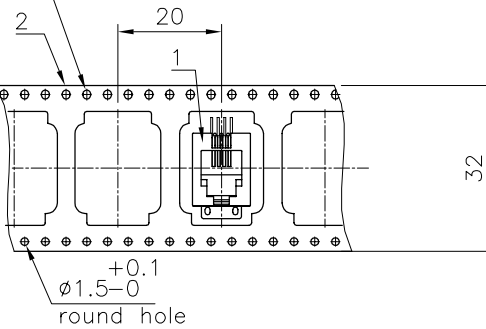


+2
32.4-0
36.4 REF

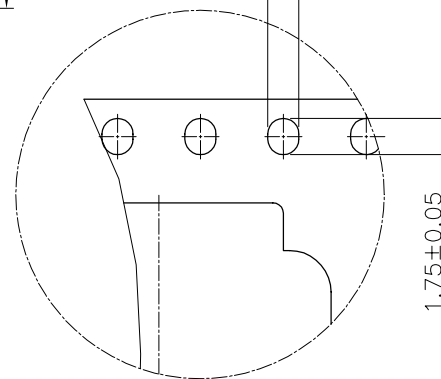
sprocket hole
elongated

TYPE 1 (FACE UP)

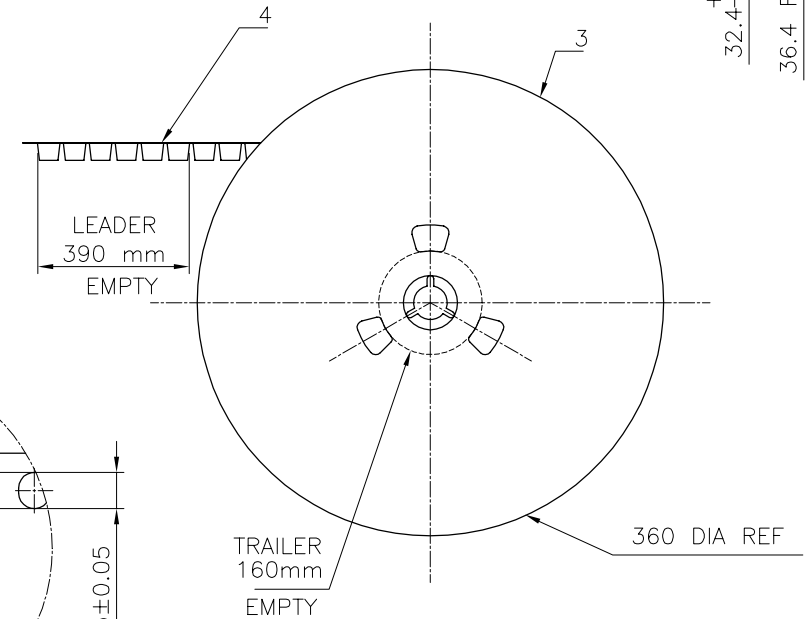
13.5


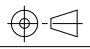


+0.1
1.5-0

DETAIL A
SCALE 4:1

1- IN ACCORDANCE WITH EIA-481 AND IEC 286-3



mat'l. code				tolerances unless otherwise specified		CUSTOMER COPY	 ELECTRONICS www.fciconnect.com	title	
ltr	ecn no	dr	date	linear	angles			E-SMT VERT	
A	F70177	MAE	97.04.07			projection		4 POS NAR PACKAGING	
B	F80169	DLE	98.05.28						
C	F00498	GCO	00.09.14			mm			
				dr	3DM	97.03.24			
				enrg	MAE	97.03.24			
				chr	O. MATHEVON	97.03.24			
				appd	MAE	97.03.24			
sheet		revision				scale		A3 87555	
index		sheet				1:1		213	
								3 of 3	