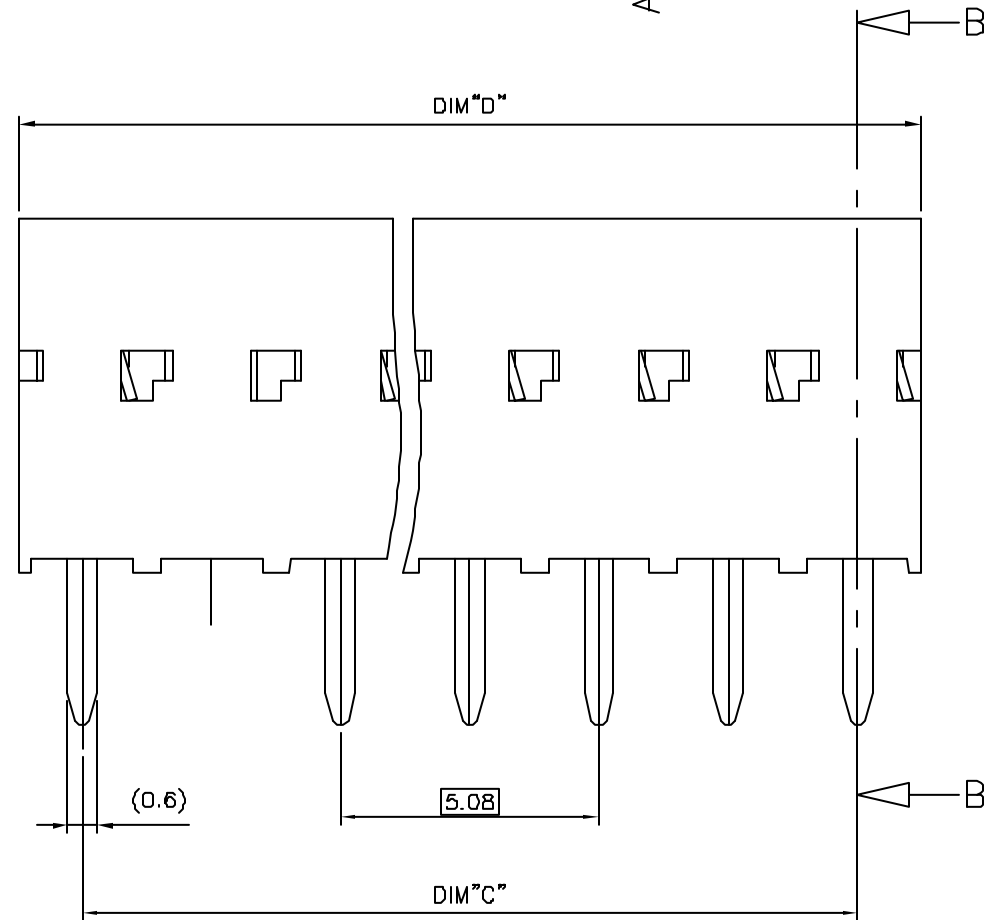
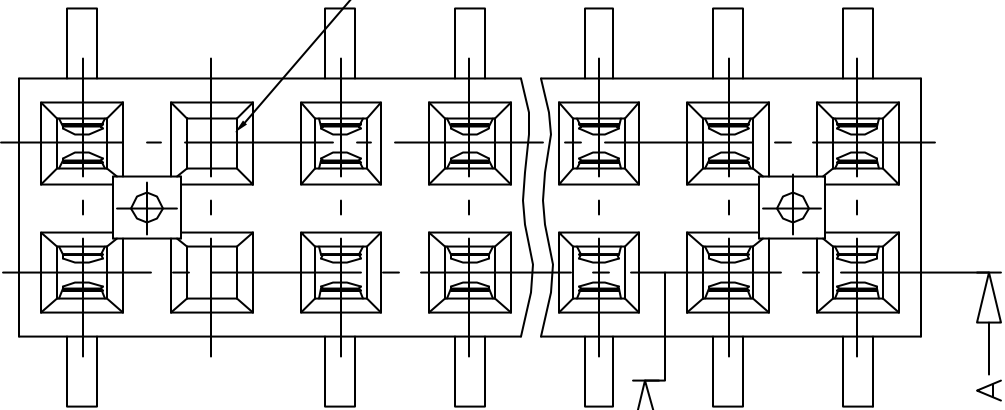


PRODUCT NB	DIM"C" & DIM"D"
95264-YXX(H)(LF)	SEE SHEET 2/2

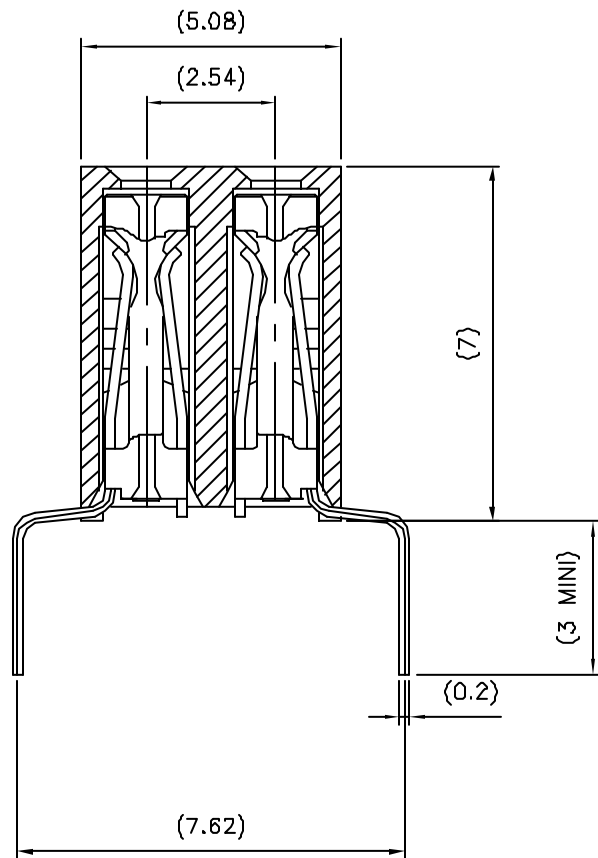
WHEN NEEDED, SUFFIX LETTER "LF"
INDICATES THE PRODUCT IS RoHS
COMPATIBLE, SEE NOTE 5

EXAMPLE MISSING TERMINAL



SECTION A-A

(SEE NOTE 4)



SECTION B-B

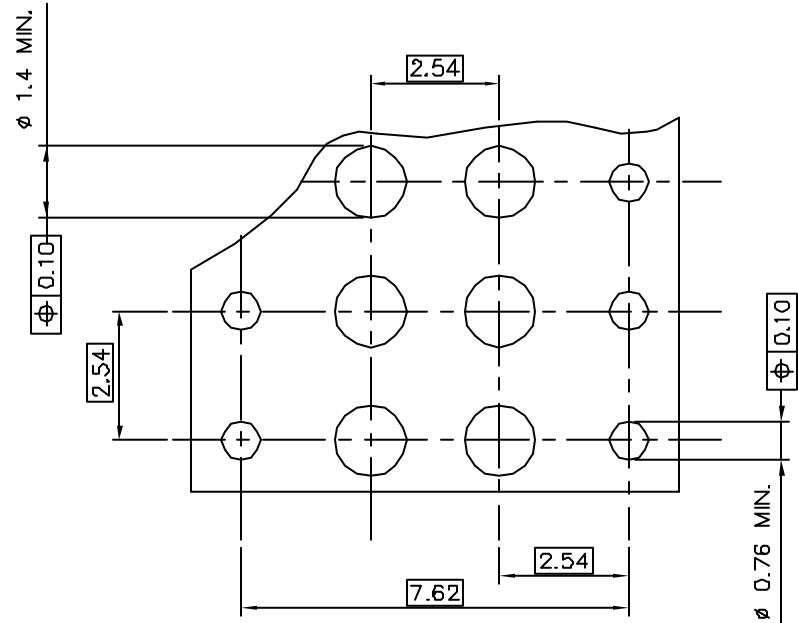
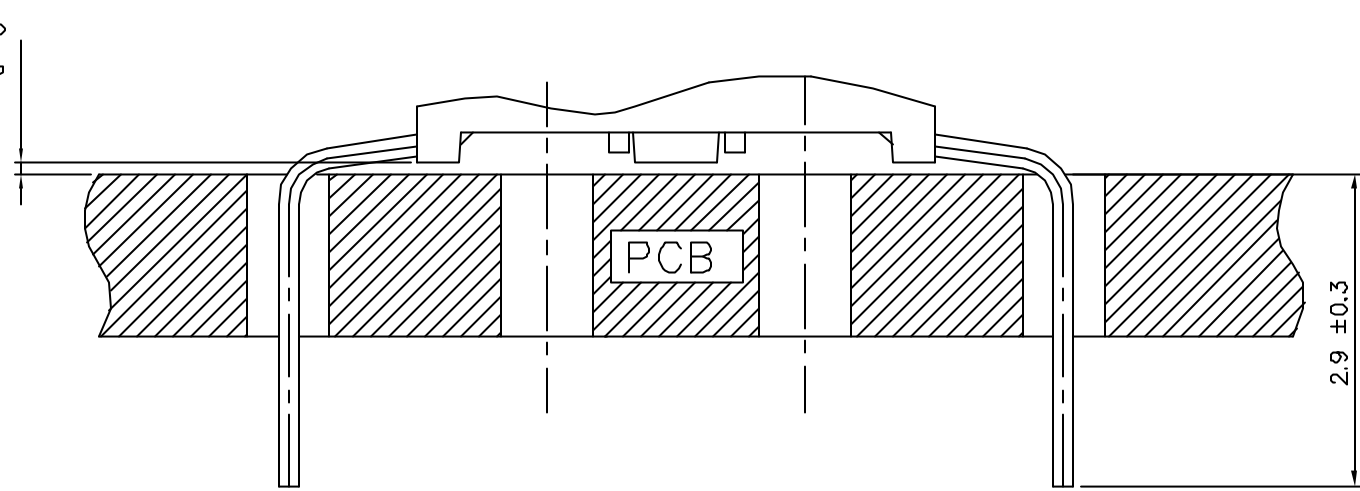
NOTES:

- 1 - MATERIAL HOUSING: THERMOPLASTIC POLYESTER, 30% GLASS FILLED, COLOUR BLUE. FLAME RETARDANT PER UL-94 CATEGORY VO.
- 2 - MATERIAL TERMINAL: PHOSPHOR BRONZE EXTRA HARD.
- 3 - MATERIAL HOUSING VERSION HIGH TEMPERATURE: PCT 30% GLASS FILLED, COLOUR GREY. FLAME RETARDANT PER UL-94 CATEGORY VO.
- 4 - THE DASH "H" AT THE END OF THE P/N TO INDICATE A HIGH TEMPERATURE HOUSING.
- 5 - RoHS COMPATIBLE PRODUCT SPECIFICATIONS
 - a - PLATING:
 - "LF" MEANS THE PRODUCT IS LEAD-FREE, 2µm MINIMUM MATTE TIN OVER 1.27µm MINIMUM NICKEL UNDERPLATE.
 - b - MANUFACTURING PROCESS COMPATIBILITY
 - THE HOUSING WILL WITHSTAND EXPOSURE TO 260°C ±5°C SOLDER BATH TEMPERATURE FOR 5 SECONDS IN A WAVE SOLDER APPLICATION WITH A 1.8mm MIN THICK CIRCUIT BOARD.
 - c - LABELING:
 - MEETS PACKAGING SPECS AS PER GS-14-920
 - d - LEGAL STATEMENT: SEE GS-22-008

CUSTOMER COPY FOR REFERENCE ONLY

mat'L code				surface		tolerance		projection		product family		
SEE NOTES				ISO 1302		ISO 406 ISO 101				DX VCC DR		
				tolerances unless otherwise specified						title		
Lfr	ecr	no	dr	date	angles	linear	±0.3		mm	SPREADED LEGS .300 SELECT. LOADED		
H	FB0638	VMQ	08.10.14									
J	F20161	DLE	02.02.25									
K	FO4-0347	DLE	04.11.15		±2°				scale 10:1			
L	FO8-0137	DLE	06.02.27	dr	O. MATHEVON	06.06.07			dwg no		sheet 1 of 2	size
N	FO6-0204	DLE	06.06.28	engr	JM.PHAMVAN	06.06.07			95264		A2	
N	FO8-0323	DLE	06.11.21	chr	P.NIZZI	06.06.07						
				appo	JN.P	06.06.07						
sheet index	revision sheet	N	H	1	2					type	CUSTOMER Drawing	

PRODUCT N°	NB of POS.	DIM°"C"	DIM°"D"	CONTACT PLACED IN CAVITY (SEE VIEW "A")																			
				1	2	3	4	5	6	7	8	9	10	11	12	13	14	15	16	17	18	19	20
95264-Y01(H)(LF)	2x10	22.86	25.32	X		X		X	X	X	X	X	X										
				X		X		X	X	X	X	X	X										
95264-Y02(H)(LF)	2x15	35.56	38.02	X		X		X		X		X		X	X	X	X	X					
				X		X		X		X		X		X	X	X	X	X					
95264-Y03(H)(LF)	2x11	35.56	38.02	X	X	X	X	X	X	X				X	X								
				X	X	X	X	X	X	X			X	X									
95264-Y04(H)(LF)	2x10	22.86	25.32	X		X	X	X	X	X	X	X	X	X									
				X		X	X	X	X	X	X	X	X	X									
95264-Y05(H)(LF)	2x4	7.62	10.08	X		X	X																
				X	X		X																
95264-Y06(H)(LF)	2x5	10.16	12.62	X	X		X	X															
				X	X		X	X															
95264-Y07(H)(LF)	2x3	5.08	7.54	X		X																	
				X		X																	
95264-Y08(H)(LF)	2x7	15.24	17.7	X		X		X		X													
				X		X		X		X													
95264-Y09(H)(LF)	2x14	33.02	35.48	X	X	X	X	X	X	X	X	X	X				X	X					
				X	X	X	X	X	X	X	X	X	X				X	X					
95264-Y10(H)(LF)	2x20	48.26	50.72	X			X			X			X			X			X				X
				X			X			X			X			X			X				



95264-6XX(H)	2µm Au MIN. OVER 1.3µm Ni MIN.	SnPb OVER Ni
95264-8XX(H)	0.4µm Au MIN. OVER 1.3µm Ni MIN.	SnPb OVER Ni
95264-4XX(H)	5µm SnPb MIN. OVER 0.1µm Ni MIN.	SnPb OVER Ni
95264-3XX(H)	0.75µm Au MIN. OVER 1.3µm Ni MIN.	SnPb OVER Ni
PLATING CODE	CONTACT AREA	SOLDER TAIL
PLATING EXPLANATION		

95264-6XX(H)LF	2µm Au MIN. OVER 1.3µm Ni MIN.	Sn OVER Ni
95264-8XX(H)LF	0.4µm Au MIN. OVER 1.3µm Ni MIN.	Sn OVER Ni
95264-4XX(H)LF	5µm Sn MIN. OVER 1.27µm Ni MIN.	Sn OVER Ni
95264-3XX(H)LF	0.75µm Au MIN. OVER 1.3µm Ni MIN.	Sn OVER Ni
PLATING CODE	CONTACT AREA	SOLDER TAIL
PLATING EXPLANATION		

CUSTOMER COPY FOR REFERENCE ONLY									
mat'L code SEE NOTES				surface ISO 1301	tolerance ISO 416	projection ISO 101	product family DX VCC DR		
Ltr	ecr no	dr	date	tolerance unless otherwise specified			title SPREADED LEGS		
H	F06-0204	DLE	06.06.28	angles	Linear	±0.3	mm		
C	F70103	JMG	97.01.10	±2°			scale 10:1		
D	F70629	PNZ	97.09.25	dr	P.NIZZI	98.10.23	dwg no		
E	F80638	VMO	98.10.14	engr	J.M.PHAMVAN	98.10.23	sheet 2 of - size		
F	F20161	DLE	02.02.25	chr	P.NIZZI	98.10.23	95264		
G	F04-0347	DLE	04.11.15	appd	J.M.P	98.10.23	type		
sheet index	revision	sheet							