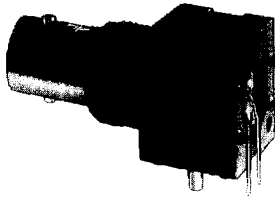


## BNC RECEPTACLES

### PC MOUNT BNC COMMERCIAL RECEPTACLES



Part Number  
BNCRAPC2000



Part Number  
BNCSTPC2000

Designed for commercial RF applications, PC mount high frequency coaxial connectors are low-cost/high-performance from 10 kHz to 1 GHz. Available with right-angle or straight PC terminals; gold-, silver- or tin-plated contacts; molded-on standoff shoulders for stable spacing from PC board surface; mounting hardware (where applicable) for bushing mount to panel-chassis; and solder posts for a more stable mount. Accommodates up to .25 inch (6.4 mm) panel thickness and .125 inch (3.2 mm) PC board thickness.

### STRAIGHT RECEPTACLES (Vertical Mount)

PART NUMBERS			FEATURES			
Gold-plated Contacts	Silver-plated Contacts	Tin-plated Contacts	Insulator Color	Mounting	Hardware	
◊BNCSTPC1000	◊BNCSTPC2000	◊BNCSTPC3000	Black	Solder Post	No	
◊BNCSTPC1001	◊BNCSTPC2001	◊BNCSTPC3001		Holes	Yes	
◊BNCSTPC1010	◊BNCSTPC2010	◊BNCSTPC3010		White	Solder Post	No
◊BNCSTPC1011	◊BNCSTPC2011	◊BNCSTPC3011			Holes	Yes
◊BNCSTPC1900	◊BNCSTPC2900	◊BNCSTPC3900	White	Solder Post	No	
◊BNCSTPC1901	◊BNCSTPC2901	◊BNCSTPC3901		Holes	Yes	
◊BNCSTPC1910	◊BNCSTPC2910	◊BNCSTPC3910		White	Solder Post	No
◊BNCSTPC1911	◊BNCSTPC2911	◊BNCSTPC3911			Holes	Yes

◊ Available on special order only, contact Switchcraft for price and delivery

### RIGHT-ANGLE RECEPTACLES

PART NUMBERS			FEATURES			
Gold-plated Contacts	Silver-Plated Contacts	Tin-plated Contacts	Insulator Color	Mounting	Hardware	
◊BNCRAPC1000	◊BNCRAPC2000	◊BNCRAPC3000	Black	Solder Post	No	
◊BNCRAPC1001	◊BNCRAPC2001	◊BNCRAPC3001		Holes	Yes	
◊BNCRAPC1010	◊BNCRAPC2010	◊BNCRAPC3010		White	Solder Post	No
◊BNCRAPC1011	◊BNCRAPC2011	◊BNCRAPC3011			Holes	Yes
◊BNCRAPC1900	◊BNCRAPC2900	◊BNCRAPC3900	White	Solder Post	No	
◊BNCRAPC1901	◊BNCRAPC2901	◊BNCRAPC3901		Holes	Yes	
◊BNCRAPC1910	◊BNCRAPC2910	◊BNCRAPC3910		White	Solder Post	No
◊BNCRAPC1911	◊BNCRAPC2911	◊BNCRAPC3911			Holes	Yes

◊ Available on special order only, contact Switchcraft for price and delivery

### SPECIFICATIONS

#### ELECTRICAL

**Impedance:** 50 ohms.

**Working Voltage:** 500 V rms.

**Contact Resistance:** 10 milliohms maximum.

**Insulation Resistance:** 10,000 Megohms, minimum.

**Dielectric Withstanding Voltage:** 1,500 V rms.

#### MECHANICAL

**Mating Cycles:** 1,000 minimum.

#### MATERIAL

**Body:** Plating over zinc die-cast.

**Sleeve:** Thermoplastic.

**Insulation:** Thermoplastic.

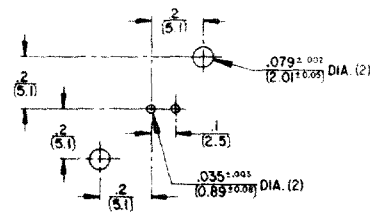
**Center Contact and Terminal:** Gold, silver or tin-plating over copper alloy.

**Ground Terminals:** Tin-plated.

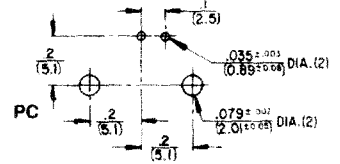
**Mounting Posts:** Tin-plated copper alloy.

**Mounting Hardware:** Internal tooth lock washer and hex nut.

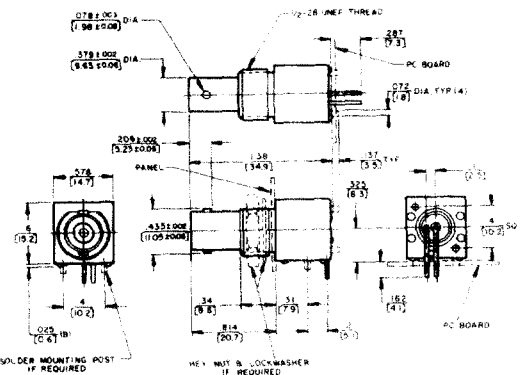
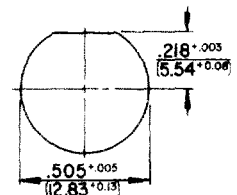
**Recommended PC Board Layout BNCSTPC (Component Side)**



**Recommended PC Board Layout BNCRAPC (Component Side)**



**Panel Cutout (Bushing Mount)**



Series BNCSTPC and BNCRAPC

DIMENSIONS ARE FOR REFERENCE ONLY  $\frac{\text{inch}}{(\text{mm})}$

NOTE: Contact your Switchcraft Representative for price and delivery.