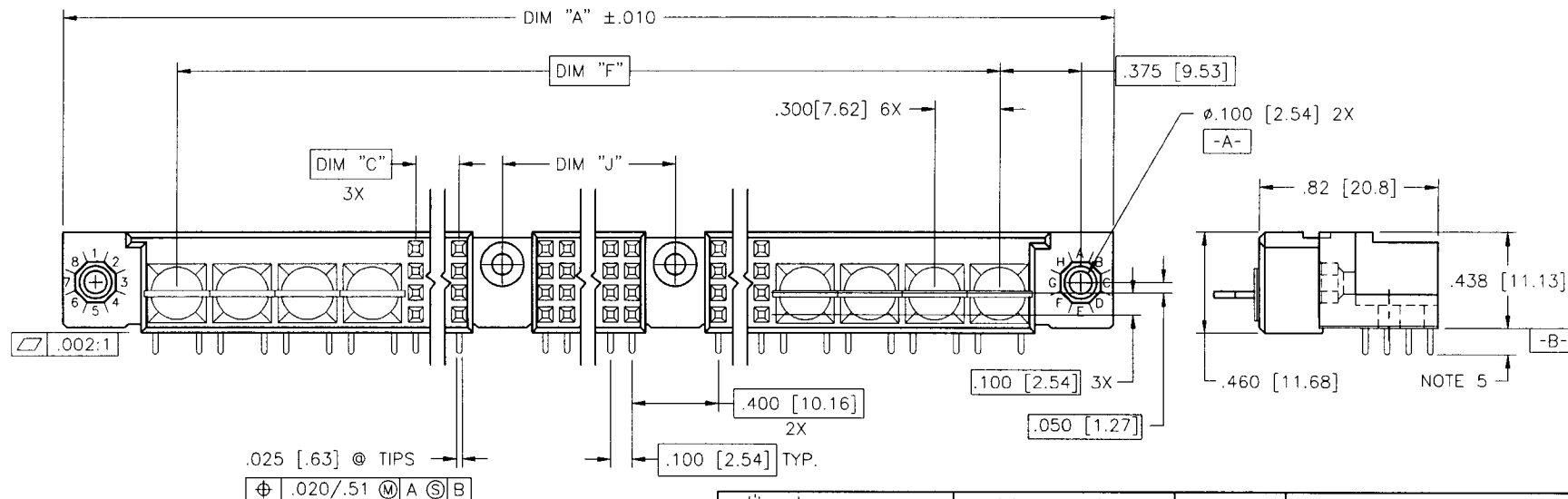
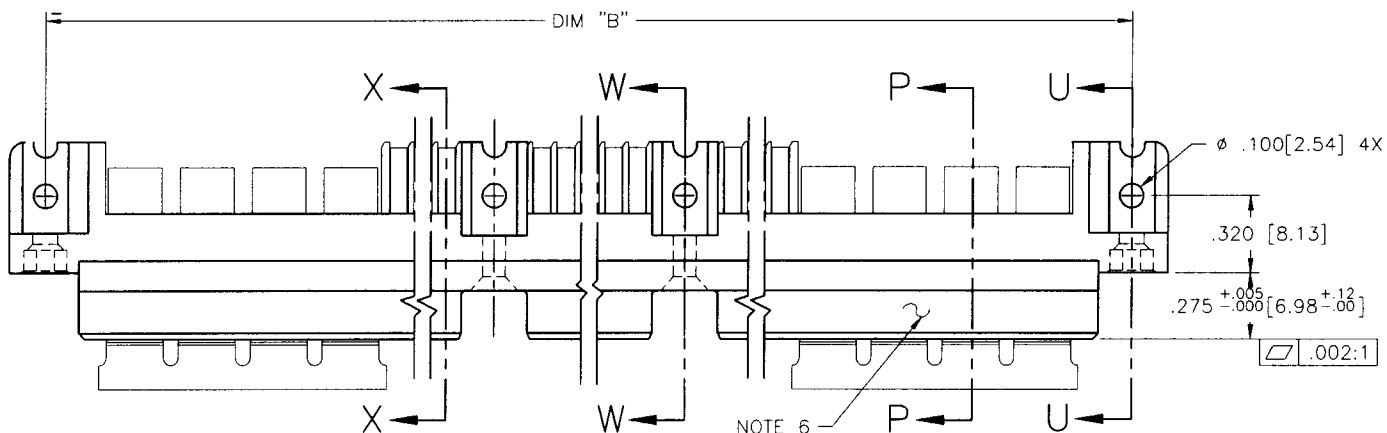


Tous droits strictement réservés. Reproduction ou communication à des tiers interdite sous quelque forme que ce soit sans autorisation écrite du propriétaire. Propriété de c FCI. Droits de reproduction FCI.



All rights strictly reserved. Reproduction or issue to third parties in any form whatever is not permitted without written authority from the proprietor. Property of FCI. Copyright FCI.

PRODUCT NUMBER
SEE NOTE 1



mat'l. code				tolerances unless otherwise specified				CUSTOMER COPY		Electronics	
NOTE 3										FCI	
ltr	ecn no	dr	date	linear	linear	linear	linear	projection	title	product family	code
A	V32463	JM	10/19/92		.XXX±.005/.XX±.13			projection	4 ROW R/A RECEPTACLE	HPC	213
B	V40245	PDP	1/13/94		.XXX±.0020/.XXX±.051			INCH/MM	SOLDER TAIL, 2 G.P., 8 P.P.		sheet
C	V91216	HTB	5/18/99	angles	0° ±2°			scale			1 of 2
D	V00255	LSS	1/13/00	dr	D. SHEAFFER	10/6/92		1:1			
				enr	S. CLARK	10/6/92					
				chr	S. CLARK	10/6/92					
				appd	S. CLARK	10/6/92					
sheet index	revision	D	D								
	sheet	1	2								

cage code
22526

ACAD

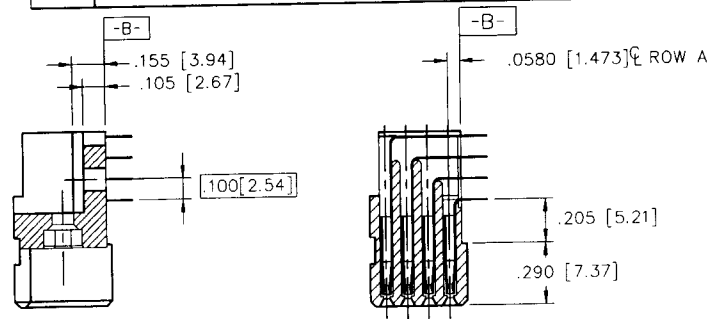
PDM: Rev:D

STATUS: Released Printed: May 13, 2011

Tous droits strictement réservés. Reproduction ou communication à des tiers
interdite sous quelque forme que ce soit sans autorisation écrite du propriétaire.
Propriété de c FCI. Droits de reproduction FCI.

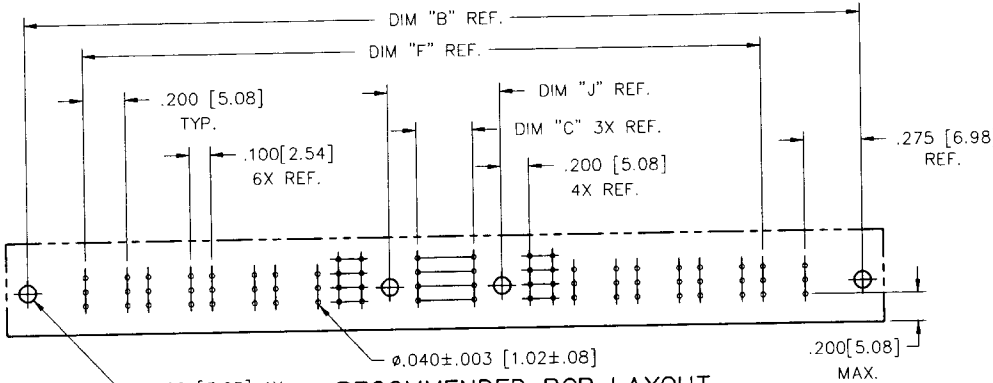
All rights strictly reserved. Reproduction or issue to third parties in any
form whatever is not permitted without written authority from the proprietor.
Property of FCI. Copyright FCI.

PRODUCT NUMBER	DIM.	LENGTH FORMULAS
SEE NOTE 1	DIM A	.100/2.54 X NO. OF COLUMNS + 3.75/95.3
	DIM B	.100/2.54 X NO. OF COLUMNS + 3.450/87.63
	DIM C	.100/2.54 X NO. OF COLUMNS DIVIDED BY 2 - .100/2.54
	DIM F	.100/2.54 X NO. OF COLUMNS + 2.700/68.58
	DIM J	.100/2.54 X NO. OF COLUMNS DIVIDED BY 3 + .300/7.62

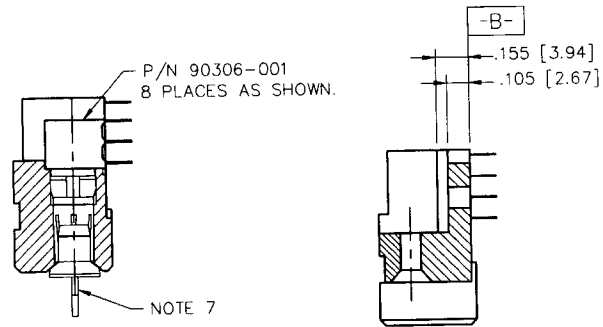


SECTION U-U

SECTION X-X



RECOMMENDED PCB LAYOUT
(ALL HOLES LOCATED ON .100 [2.54] GRID
UNLESS OTHERWISE SPECIFIED)



SECTION P-P

SECTION W-W

NOTES:

- PRODUCT NUMBERING CODE:
50574 - X YYY Z
TAIL LENGTH (NOTE 5)
POSITIONS (NOTE 2)
BASE NUMBER

PRODUCT NUMBERING CODE FOR
SELECT LOAD PART NUMBERS:
50574 - XYYYY
SEQUENCE NUMBER
ALWAYS 'XX'
BASE NUMBER
- THIS PRODUCT IS CONFIGURED IN SIZES OF
30 THRU 126 COLUMNS IN INCREMENTS OF TWO.
i.e.: 30,33,36,39.....123,126.
- HOUSING MATERIAL: GLASS AND MINERAL FILLED
HIGH-TEMP THERMOPLASTIC FLAME RETARDANT
PER UL94V-0. COLOR BLACK
CONTACT MATERIAL: BeCu
- PLATING CONTACT AREA OPTIONS:
1 = 30u"/.76u GOLD
3 = 50u"/1.27u GOLD
5 = 30u"/.76u GXT
ALL SOLDER TAILS SnPb
POWER CONTACTS 30u"/.76u GOLD
- TAIL LENGTH OPTIONS:
E = .125±.010 / 3.18±.25
F = .145±.010 / 3.68±.25
H = .180±.010 / 4.57±.25
ALL POWER TAILS = .145 / 3.68
- MANUFACTURE'S NAME, PART NUMBER AND LOT CODE
TO APPEAR ON THIS SURFACE PER BUS-12-108.
- POWER SOCKET LOCATOR(P/N 50233) TO BE REMOVED
AFTER SOLDERING OPERATION.
- FOR DOCUMENTATION MENU, SEE SPEC. BUS-01-057.

mat'l. code				tolerances unless otherwise specified		CUSTOMER COPY		Electronics FCI www.fciconnect.com	
ltr	ecr no	dr	date	linear	.XX±.01/.X±.3	projection	title	4 ROW R/A RECEPTACLE SOLDER TAIL, 2 G.P., 8 P.P.	
D				angles	.XXX±.005/.XX±.13 .XXX±.0020/.XXX±.051 0° ±2°	INCH/MM	product family		
				dr	D. SHEAFFER 10/6/92	scale	HPC	code	213
				enr	S. CLARK 10/6/92	1:1	size	dwg no	sheet
				chr	S. CLARK 10/6/92		A	50574	2 of
				appd	S. CLARK 10/6/92				
sheet	revision								
index	sheet								
								cage code	4
								22526	

ACAD