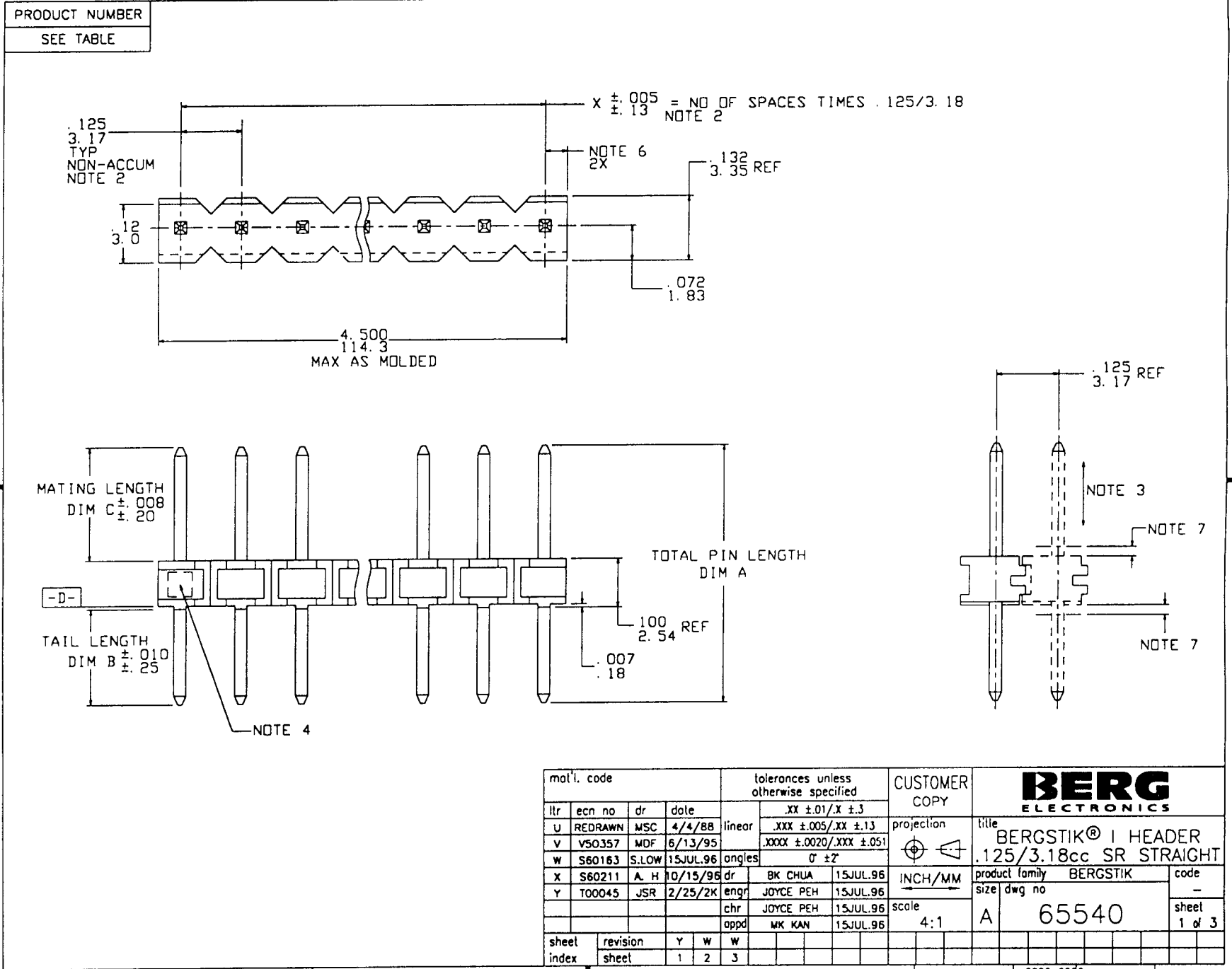


Tous droits strictement reserves. Reproduction ou communication a des tiers interdite sous quelque forme que ce soit sans autorisation écrite du propriétaire.
 Propriete de ©BERG ELECTRONICS. Droits de reproduction BERG ELECTRONICS INC.

All rights strictly reserved. Reproduction or issue to third parties in any form whatever is not permitted without written authority from the proprietor.
 Property of ©BERG ELECTRONICS Copyright BERG ELECTRONICS INC.



mat'l. code				tolerances unless otherwise specified			CUSTOMER COPY		BERG ELECTRONICS	
ltr	ecn no	dr	date	linear	$.XX \pm .01 / X \pm .3$		projection	title		
U	REDRAWN	MSC	4/4/88		$.XXX \pm .005 / XX \pm .13$			BERGSTIK® I HEADER		
V	V50357	MDF	6/13/95	angles	$.XXXX \pm .0020 / XXX \pm .051$		INCH/MM	product family BERGSTIK		
W	S60163	S.LOW	15JUL.96		$0' \pm 2'$			size dwg no		
X	S60211	A. H	10/15/96	dr	BK CHUA	15JUL.96	scale	code		
Y	T00045	JSR	2/25/2K	engr	JOYCE PEH	15JUL.96		-		
				chr	JOYCE PEH	15JUL.96		sheet		
				appd	MK KAN	15JUL.96	4:1	A	65540	1 of 3
sheet index	revision sheet	Y	W	W						
		1	2	3						

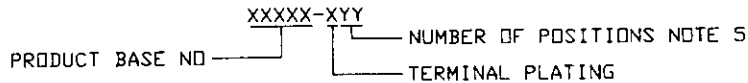
Tous droits strictement réservés. Reproduction ou communication à des tiers interdite sous quelque forme que ce soit sans autorisation écrite du propriétaire. Propriété de ©BERG ELECTRONICS. Droits de reproduction BERG ELECTRONICS INC.



All rights strictly reserved. Reproduction or issue to third parties in any form whatever is not permitted without written authority from the proprietor. Property of ©BERG ELECTRONICS Copyright BERG ELECTRONICS INC.

PRODUCT NUMBER SEE TABLE	OVERPLATING	UNDERPLATING	PLASTIC COLOR	
-1YY	30u"/0.76u GOLD	50u"/1.27u NICKEL	BLACK	
-2YY	15u"/0.38u GOLD	50u"/1.27u NICKEL	CREAM	
-3YY	50u"/1.27u GOLD	50u"/1.27u NICKEL	BROWN	
-4YY	150u"/3.81u 93/7 TIN LEAD	-----	BLACK	
-5YY	15u"/.38u GXT	50u"/1.27u NICKEL	DK BLUE	OBSOLETE
-6YY	30u"/.76u GXT	50u"/1.27u NICKEL	LT BLUE	OBSOLETE

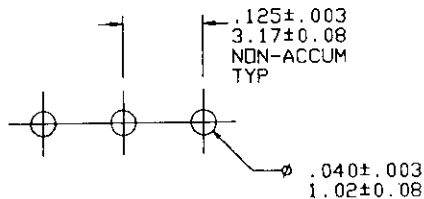
PART NUMBER INFORMATION



EXAMPLE: 65547-408 DENOTES AN 8 POSITION PART WITH 150u"/3.81u TIN PLATED TERMINALS. THE OVERALL PLASTIC LENGTH MAY BE 1.050/26.67 MAX. (NOTE 6). THE PLASTIC COLOR IS BLACK.

NOTES:

- MOLDING MATERIAL: 20% MIN GLASS FILLED NYLON, RATED PER UL-94V-0. PIN MATERIAL: 3/4 HARD PHOS BRONZE.
- MEASURED AT DATUM -D- WITH PART IN RESTRAINED CONDITION.
- 5 LBS/ 2.3 KGS MINIMUM TERMINAL PUSH-OUT FORCE IN EITHER DIRECTION.
- BERG LOGO MAY APPEAR ON THIS SURFACE.
- MIN NO. OF POSITIONS = 1. MAX NO. OF POSITIONS = 36.
- .060/1.52 MAX AS MOLDED (MOLDED AS 36 POS. ONLY). .085/2.16 MAX WHEN BROKEN TO SPECIFIED LENGTHS.
- .020/0.51 MAX FLASH AROUND PIN IN THIS AREA.
- TWO SIDES OF LEAD-IN ON PINS NOT PLATED. TYPICAL BOTH SIDES.



RECOMMENDED HOLE PATTERN

mat'l. code				tolerances unless otherwise specified		CUSTOMER COPY		BERG ELECTRONICS	
ltr	ecn no	dr	date	linear	.XX ± .01 / X ± .3	projection	title	BERGSTIK® 1 HEADER	
v					.XXX ± .005 / XX ± .13		.125/3.18cc SR STRAIGHT		
w				angles	.XXX ± .0020 / XXX ± .051		product family	BERGSTIK	code
				dr	BK CHUA 15JUL.96	INCH/MM	size	dwg no	sheet
				engr	JOYCE PEH 15JUL.96	scale	A	65540	2 of
				chr	JOYCE PEH 15JUL.96	1:1			
				appd	MK KAN 15JUL.96				
sheet index	revision	sheet	1						

cage code 22526

Tous droits strictement reserves. Reproduction ou communication a des tiers interdite
 sous quelque forme que ce soit sans autorisation écrite du propriétaire.
 Propriété de ©BERG ELECTRONICS. Droits de reproduction BERG ELECTRONICS INC.



All rights strictly reserved. Reproduction or issue to third parties in any form
 whenever is not permitted without written authority from the proprietor.
 Property of ©BERG ELECTRONICS Copyright BERG ELECTRONICS INC.

PRODUCT NUMBER	TOTAL PIN LENGTH		TAIL LENGTH		MATING LENGTH		AVAILABLE PLATING							
	DIM A	DIM A	DIM B	DIM B	DIM C	DIM C	-1YY	-2YY	-3YY	-4YY	-5YY	-6YY		
65540-XY	0.525	13.34	0.195	4.95	0.230	5.84								
65541-XY	0.825	20.96	0.495	12.57	0.230	5.84	YES	YES	YES	YES	NO	NO		
65542-XY	0.425	10.80	0.095	2.41	0.230	5.84	YES	YES	YES	YES	NO	NO		
65543-XY	0.615	15.62	0.285	7.24	0.230	5.84	YES	YES	YES	YES	NO	NO		
65544-XY	0.730	18.54	0.400	10.16	0.230	5.84	YES	YES	YES	YES	NO	NO		
65545-XY	0.965	24.51	0.635	16.13	0.230	5.84	YES	YES	YES	YES	NO	NO		
65546-XY	1.025	26.04	0.695	17.65	0.230	5.84	YES	YES	YES	YES	NO	NO		
65547-XY	0.450	11.43	0.120	3.05	0.230	5.84	YES	YES	YES	YES	NO	NO		
65548-XY	0.480	12.19	0.150	3.81	0.230	5.84	YES	YES	YES	YES	NO	NO		
65549-XY	0.580	14.73	0.250	6.35	0.230	5.84	YES	YES	YES	YES	NO	NO		
65550-XY	0.655	16.64	0.325	8.26	0.230	5.84	YES	YES	YES	YES	NO	NO		
65551-XY							- N O T	A V A I L A B L E						
65552-XY							- N O T	A V A I L A B L E						
65553-XY	1.155	29.34	0.825	20.96	0.230	5.84	YES	YES	YES	YES	NO	NO		
65623-XY	0.855	21.72	0.455	11.56	0.300	7.62	YES	YES	YES	YES	NO	NO		
65634-XY	0.615	15.62	0.215	5.46	0.300	7.62	YES	YES	YES	YES	NO	NO		
65635-XY	0.525	13.34	0.107	2.72	0.318	8.08	YES	YES	YES	YES	NO	NO		
65636-XY	0.673	17.09	0.120	3.05	0.453	11.51	YES	YES	YES	YES	NO	NO		
65957-XY	0.650	16.51	0.232	5.89	0.318	8.08	YES	YES	YES	YES	NO	NO		
65963-XY	0.945	24.00	0.615	15.62	0.230	5.84	YES	YES	YES	YES	NO	NO		
66487-XY							- N O T	A V A I L A B L E						
67899-XY							- N O T	A V A I L A B L E						
68698-XY							- N O T	A V A I L A B L E						
68699-XY	0.861	21.87	0.461	11.71	0.300	7.62	YES	YES	YES	YES	NO	NO		
68700-XY							- N O T	A V A I L A B L E						
68701-XY							- N O T	A V A I L A B L E						

OBSOLETE OBSOLETE

mat'l. code		tolerances unless otherwise specified		CUSTOMER COPY		BERG ELECTRONICS	
lir	ecn no	dr	date	linear	.XX ±.01/X ±.3	projection	title
v					.XXX ±.005/XX ±.13		BERGSTIK® I HEADER
w				angles	.XXXX ±.0020/XXX ±.051		.125/3.18cc SR STRAIGHT
				dr	° ±Z	INCH/MM	product family
				engr	BK CHUA 15JUL96	scale	BERGSTIK
				chr	JOYCE PEH 15JUL96	1:1	size dwg no
				appd	JOYCE PEH 15JUL96		A 65540
					MK KAN 15JUL96		code
sheet index	revision sheet						sheet 3 of
							cage code
							22526