

## POWER CONNECTOR



**CCT2302-037** □

### 2P Inlet

#### ■ Specifications

1. Rating : 2.5A 250V AC
2. Insulation Resistance : 300MΩ min. at 500V DC
3. Withstanding Voltage : 2000V AC for one minute
4. Operating Temperature : -20°C to +60°C
5. Main Unit Material : Polyphenylene Oxide (Black) 94V-1

#### ■ NOTE

1. These inlets are independent type from the printed circuit board.
2. A structure is adopted for the jacks to be fixed into the chassis by a sliding method.



**CCT2302-038** □

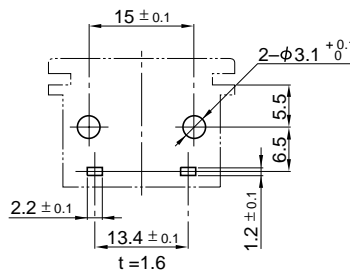
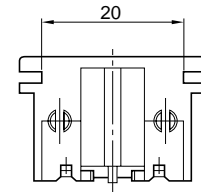
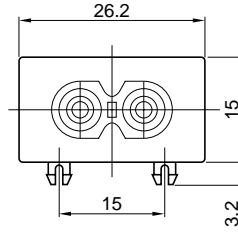
### 2P Inlet

#### ■ Specifications

1. Rating : 2.5A 250V AC
2. Insulation Resistance : 300MΩ min. at 500V DC
3. Withstanding Voltage : 2000V AC for one minute
4. Operating Temperature : -20°C to +60°C
5. Main Unit Material : Polyphenylene Oxide (Black) 94V-1

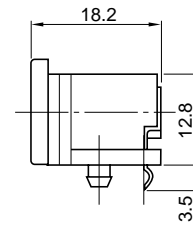
#### ■ NOTE

1. These inlets are independent type from the printed circuit board.
2. Can be fixed to the chassis with two tapping screws.



#### ■ P.C.Board Dimension

1. プリント基板に自立する構造です。
2. シャーシにはスライド式にてハメ込む構造です。

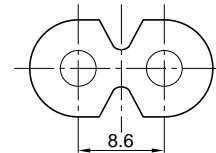


#### Approval Standards:

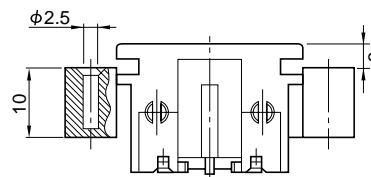
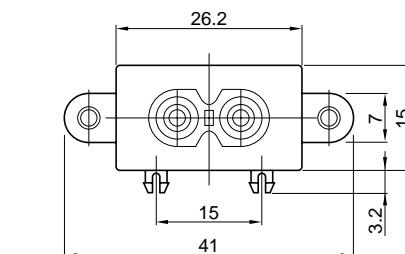
UL
CSA
SEV
VDE
SEMKO
DEMKO
NEMKO

\* Polarized model approved by UL and CSA.  
有極タイプはUL,CSAのみ取得。

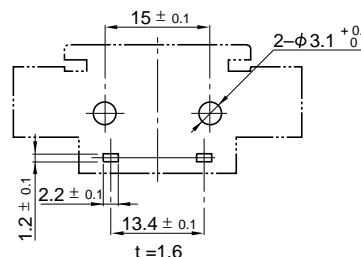
#### ■ Applicable Plug (European Type)



□	Polarized Type (Color)
1	Non-Polarized (Black)
2	Non-Polarized (Gray)
3	Polarized (Black)



#### ■ P.C.Board Dimension



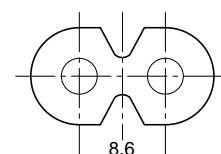
1. プリント基板に自立する構造です。
2. シャーシには2ヶ所でタッピングねじ固定ができます。

#### Approval Standards:

UL
CSA
SEV
VDE
SEMKO
DEMKO
NEMKO

\* Polarized model approved by UL and CSA.  
有極タイプはUL,CSAのみ取得。

#### ■ Applicable Plug (European Type)



□	Polarized Type
1	Non-Polarized
2	Polarized

## POWER CONNECTOR



**CCT2302-0501**

**2P Inlet**

### Specifications

1. Rating: 2.5A 250V AC
2. Insulation Resistance: 300MΩ min. at 500V DC
3. Withstanding Voltage: 2000V AC for one minute
4. Operating Temperature: -20°C to +60°C
5. Main Unit Material: Polyphenylene Oxide (Black) 94V-1

### NOTE

1. These inlets are independent type from the printed circuit board.
2. A structure is adopted for the jacks to be fixed into the chassis by a sliding method.



**CCT2302-0601**

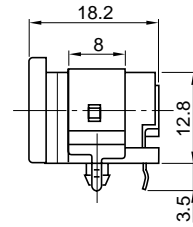
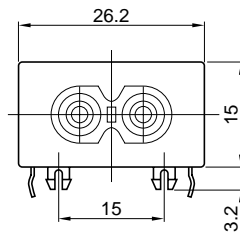
**2P Inlet**

### Specifications

1. Rating: 2.5A 250V AC
2. Insulation Resistance: 300MΩ min. at 500V DC
3. Withstanding Voltage: 2000V AC for one minute
4. Operating Temperature: -20°C to +60°C
5. Main Unit Material: Polyphenylene Oxide (Black) 94V-1

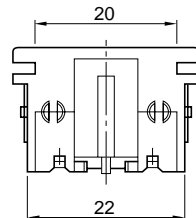
### NOTE

1. These inlets are independent type from the printed circuit board.
2. A structure is adopted for the jacks to be fixed into the chassis by a sliding method.

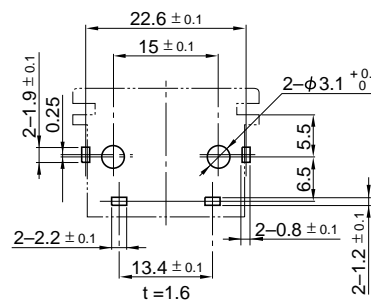


### Approval Standards:

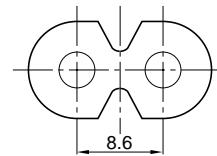
UL
CSA
SEV
VDE
SEMKO
DEMKO
NEMKO



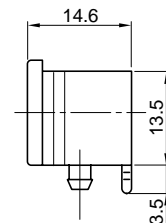
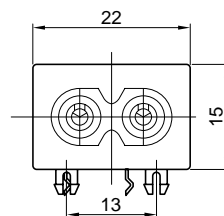
### P.C. Board Dimension



### Applicable Plug (European Type)

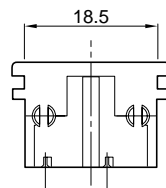


1. プリント基板に自立する構造です。
2. シャーシにはスライド式にてハメ込む構造です。

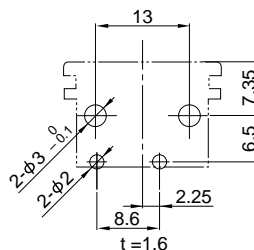


### Approval Standards:

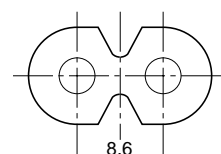
UL
CSA
VDE
SEMKO
DEMKO
NEMKO
FIMKO



### P.C. Board Dimension



### Applicable Plug (European Type)



1. プリント基板に自立する構造です。
2. シャーシにはスライド式にてハメ込む構造です。

# Power Connector



CCT2302-

Serial No.  
Polarized

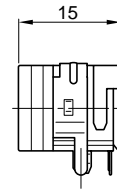
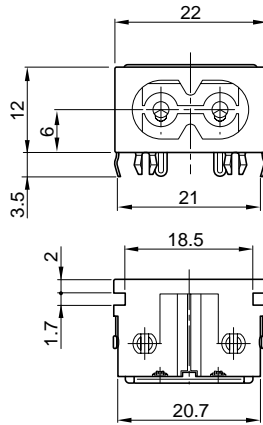
## 2P Inlet

### Features

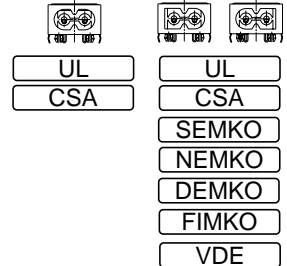
1. About 27% smaller than our previous equivalent products.
2. IEC320 standards, sheet C8 compatible.
3. Also available with reinforcement hardware and cover.
4. Conforms to safety requirements of European and American standards.

### Specifications

1. Rating : 2.5A 250V AC/7A 125V AC
2. Insulation Resistance : 300M $\Omega$  min. at 500V DC
3. Withstanding Voltage : 2000V AC for one minute
4. Operating Temperature : -20 to +60
5. Main Unit Material : Poliphenylene Oxide (Black) 94V-1



### Approval Standards:



### 特長

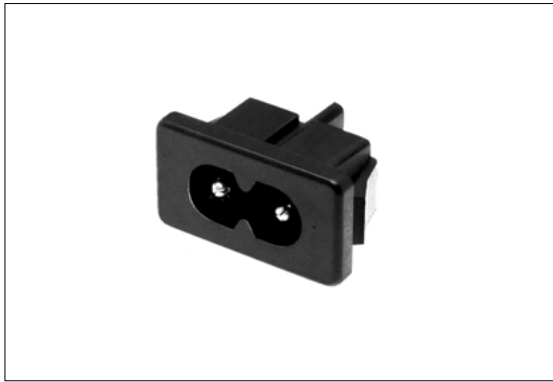
1. 体積は当社従来品に比べ約27%小型化しました。
2. 国際規格IEC320スタンダード・シートC8に準拠しています。
3. 補強金具、カバー付き品を用意しています。
4. 欧米各国の安全規格を取得しています。

### 仕様

1. 定格電圧電流 AC250V 2.5A / AC 125V 7A
2. 絶縁抵抗 DC500V 300M 以上
3. 耐電圧 AC2000V 1分間
4. 使用温度範囲 - 20 ~ +60
5. 本体材質 変性ポリフェニレンオキサ이드 黒色 94V-1

☒☒	Polarized 極性	Variation			Mounting Holes PC Board 取付基板穴参考図
		☐☐ Cover カバー	Metal Fixture 固定金具	Shape 形状	
07	CCT2302-07☐☐ 	01			 t = 1.0-1.6
08	CCT2302-08☐☐ 	11	x		 t = 1.0-1.6
09	CCT2302-09☐☐ 	21	x		 t = 1.0-1.6
		31	x	x	

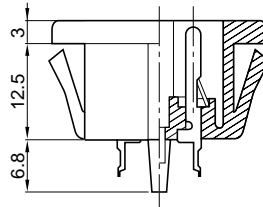
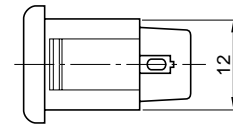
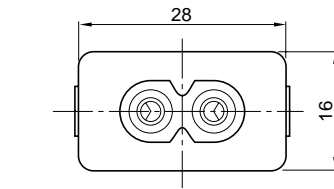
POWER CONNECTOR



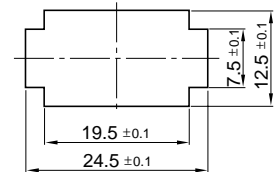
**CCT2102-0201**  
**2P Inlet**

■ Specifications

1. Rating : 2.5A 250V AC
2. Insulation Resistance : 300MΩ min. at 500V DC
3. Withstanding Voltage : 2000V AC for one minute
4. Main Unit Material : Polyphenylene Oxide (Black) 94V-1

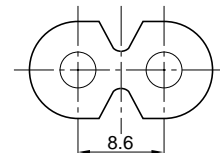


■ Mounting Holes for Panel



Material: Metal  
Applicable Thickness: 0.9 to 1.3

■ Applicable Plug (European Type)



Approval Standards:

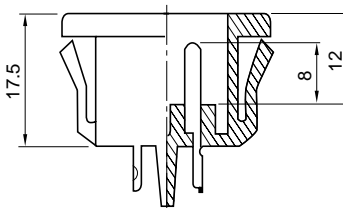
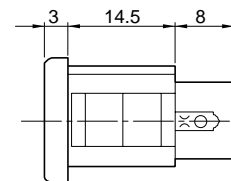
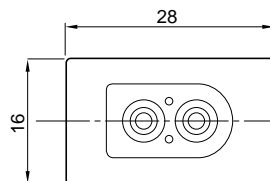
- UL
- CSA
- VDE
- DEMKO
- BSI
- SEMKO



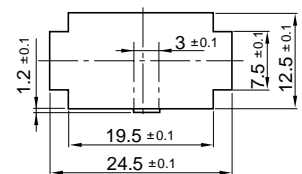
**CCT2102-0301**  
**2P Inlet**

■ Specifications

1. Rating : 7A 125V AC
2. Insulation Resistance : 300MΩ min. at 500V DC
3. Withstanding Voltage : 2000V AC for one minute
4. Main Unit Material : Polyphenylene Oxide (Black) 94V-1

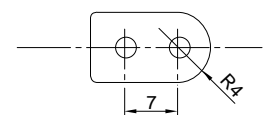


■ Mounting Holes for Panel



Material: Metal  
Applicable Thickness: 0.9 to 1.3

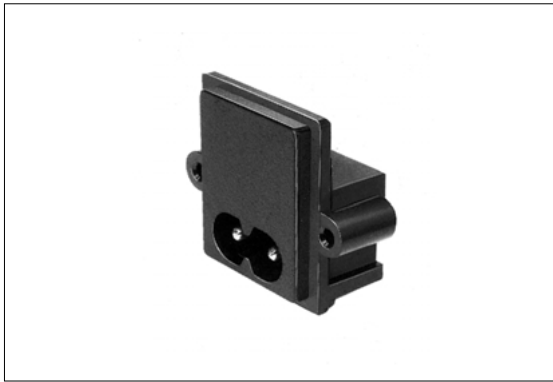
■ Applicable Plug



Approval Standards:

- UL
- CSA

POWER CONNECTOR

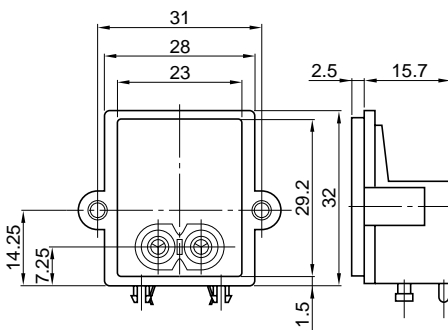


**CCT9302-0101**

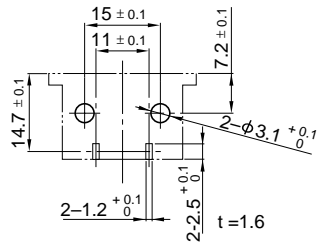
**2P Inlet (Non-polarized)**

■ Specifications

1. Rating : 2.5A 250V AC
2. Insulation Resistance : 300MΩ min. at 500V DC
3. Withstanding Voltage : 2000V AC for one minute
4. Operating Temperature : -20°C to +60°C
5. Main Unit Material : Polyphenylene Oxide (Black) 94V-1

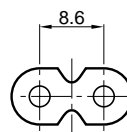


■ P.C.Board Dimension (Top View)



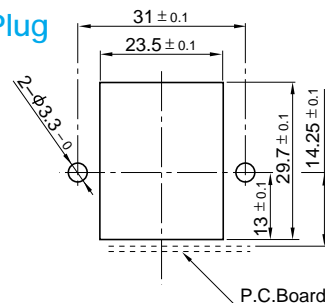
■ Mounting Holes for Panel

■ Applicable Plug



Approval Standards:

- UL
- CSA
- SEMKO
- VDE



■ NOTE

1. These inlets are independent type from the printed circuit board.
2. Can be fixed to the chassis with two tapping screws.
1. プリント基板に自立する構造です。
2. シャーシには2ヶ所でタッピンねじ固定できます。

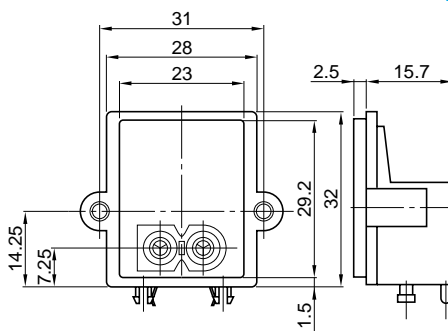


**CCT9302-0201**

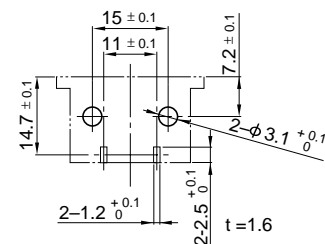
**2P Inlet (Polarized)**

■ Specifications

1. Rating : 2.5A 250V AC 7A 125V AC
2. Insulation Resistance : 300MΩ min. at 500V DC
3. Withstanding Voltage : 2000V AC for one minute
4. Operating Temperature : -20°C to +60°C
5. Main Unit Material : Polyphenylene Oxide (Black) 94V-1

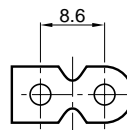


■ P.C.Board Dimension (Top View)



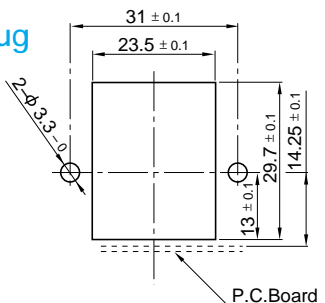
■ Mounting Holes for Panel

■ Applicable Plug



Approval Standards:

- UL
- CSA



■ NOTE

1. These inlets are independent type from the printed circuit board.
2. Can be fixed to the chassis with two tapping screws.
1. プリント基板に自立する構造です。
2. シャーシには2ヶ所でタッピンねじ固定ができます。

## POWER CONNECTOR



**CCT2103-0203**

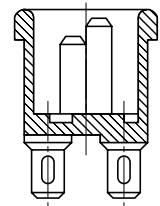
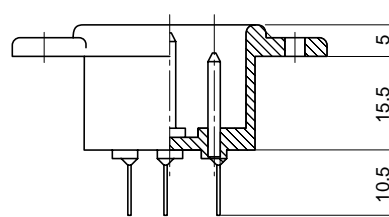
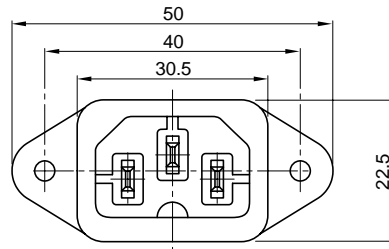
**3P Inlet**

### Specifications

1. Rating : 10A 250V AC
2. Insulation Resistance : 500M $\Omega$  min. at 500V DC
3. Withstanding Voltage : 4000V AC for one minute
4. Main Unit Material : Polybutylene Terephthalate (Black) 94V-0

### NOTE

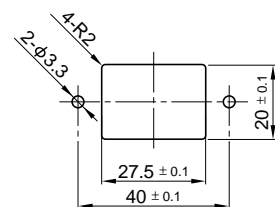
3P inlets which can be fixed to the chassis with plate screws are also available.



Approval Standards:



### Mounting Holes for Panel

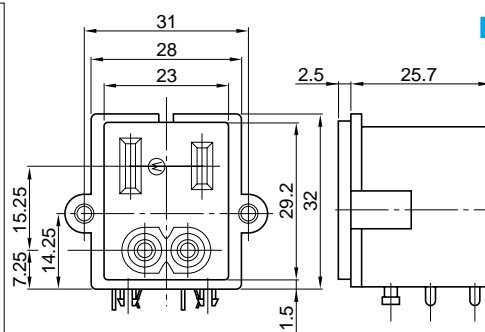


**CCT9304-0101**

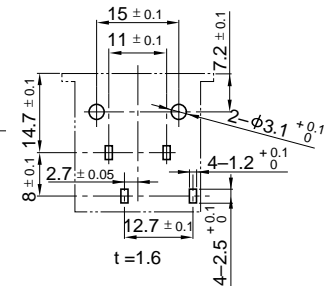
**Inlet-Outlet**

### Specifications

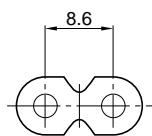
1. Rating : 5A 125V AC
2. Contact Resistance : 50m $\Omega$  max. (for AC outlet section)
3. Insulation Resistance : 300M $\Omega$  min. at 500V DC
4. Withstanding Voltage : 2000V AC for one minute
5. Operating Temperature : -20°C to +100°C
6. Main Unit Material : Polyphenylene Oxide (Black) 94V-1



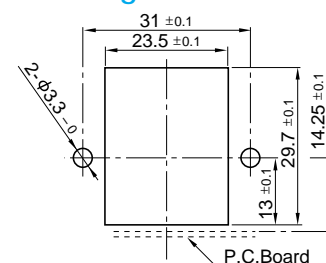
### P.C. Board Dimension (Top View)



### Applicable Plug



### Mounting Holes for Panel



### NOTE

1. These inlets are independent type from the printed circuit board.
2. Can be fixed to the chassis with two tapping screws.
3. The AC inlet and AC outlet are combined in one unit to reduce manhour requirements for mounting them to the P.C.Board or fixing to the chassis.
1. プリント基板に自立する構造です。
2. シャーシには2ヶ所でタッピンねじ固定ができます。
3. ACインレットとACアウトレットが一体化されており、プリント基板へのマウント及びシャーシ止めの工数削減が図れます。

## POWER CONNECTOR

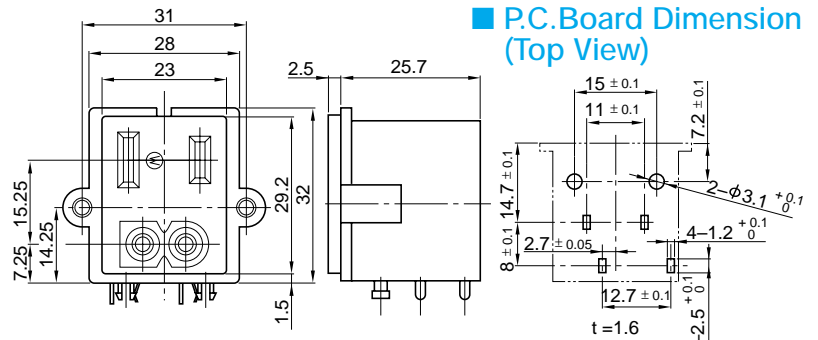


### CCT9304-0201

#### Inlet-Outlet

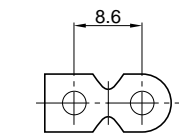
#### ■ Specifications

1. Rating : 5A125V AC
2. Contact Resistance : 50mΩ max.  
(for AC outlet section)
3. Insulation Resistance : 300MΩ min. at 500V DC
4. Withstanding Voltage : 2000V AC for one minute
5. Operating Temperature : -20°C to +100°C
6. Main Unit Material : Polyphenylene Oxide (Black) 94V-1

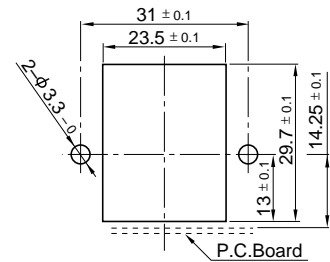
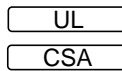


#### ■ Applicable Plug

#### ■ Mounting Holes for Panel



#### Approval Standards



#### ■ NOTE

1. These inlets are independent type from the printed circuit board.
  2. Can be fixed to the chassis with two tapping screw.
  3. The AC inlet and AC outlet are combined in one unit to reduce manhour requirements for mounting them to the P.C.Board or fixing to the chassis.
1. プリント基板に自立する構造です。  
2. シャーシには2ヶ所でタッピンねじ固定ができます。  
3. ACインレットとACアウトレットが一体化されており、プリント基板へのマウント及びシャーシ止めの工数削減が図れます。

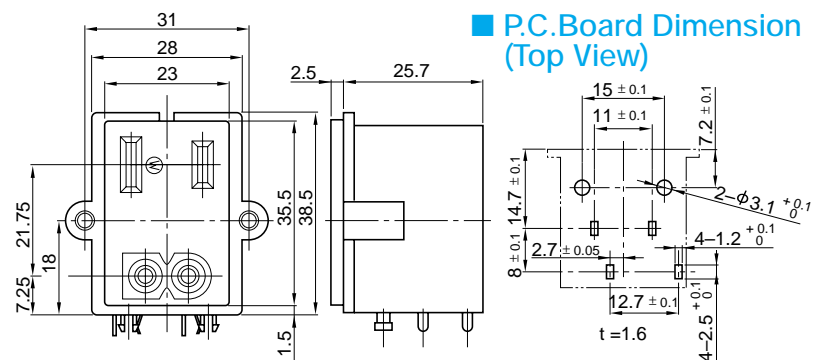


### CCT9304-0401

#### Inlet-Outlet

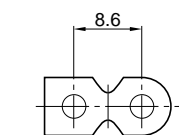
#### ■ Specifications

1. Rating : 5A125V AC
2. Contact Resistance : 50mΩ max.  
(for AC outlet section)
3. Insulation Resistance : 300MΩ min. at 500V DC
4. Withstanding Voltage : 2000V AC for one minute
5. Operating Temperature : -20°C to +100°C
6. Main Unit Material : Polyphenylene Oxide (Black) 94V-1

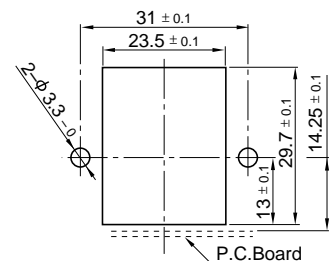
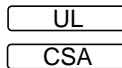


#### ■ Applicable Plug

#### ■ Mounting Holes for Panel



#### Approval Standards



#### ■ NOTE

1. These inlets are independent type from the printed circuit board.
  2. Can be fixed to the chassis with two tapping screw.
  3. The AC inlet and AC outlet are combined in one unit to reduce manhour requirements for mounting them to the P.C.Board or fixing to the chassis.
1. プリント基板に自立する構造です。  
2. シャーシには2ヶ所でタッピンねじ固定ができます。  
3. ACインレットとACアウトレットが一体化されており、プリント基板へのマウント及びシャーシ止めの工数削減が図れます。