

Features

- One piece slim-line housing saves space and provides six- or eight-wire modular access to RS232 input/output connector
- Consists of corrosion resistant, 25- or 15-contact, D-Subminiature plugs or sockets in unassembled kits or pre-wired to a non-keyed, six- or eight-wire modular jack
- Available with or without spring latches
- Pre-wired versions 100% inspected and tested
- Kits provide flexibility for "on-the-spot" wiring
- Hand termination tool available for reliable kit assembly
- UL Recognized file no. E19071
- CSA Approved file no. LR-31996-3

Performance Data

Materials

Insulation Material:

Modular Jack: UL 94V-0 rated thermoplastic, gray
D-Subminiature: UL 94V-0 rated glass-filled nylon, black

Contact Material:

Modular Jack: phosphor bronze
D-Subminiature: phosphor bronze

Contact Plating:

Modular Jack: 50 μinch gold over copper
D-Subminiature: gold flash over copper

Hood Material: thermoplastic, gray

Electrical Characteristics

Withstanding Voltage:

Modular Jack: Meets 1000 VAC dielectric requirement
D-Subminiature: 1000 VAC rms (@ sea level)

Current Rating:

Modular Jack: Meets Telephone USOC requirements; 1.5 Amps
D-Subminiature: 3 Amps

Contact Resistance:

Modular Jack: 6 Milliohms maximum
D-Subminiature: 5 Milliohms maximum

Insulation Resistance:

Modular Jack: 500 Megohms minimum
D-Subminiature: 5000 Megohms minimum

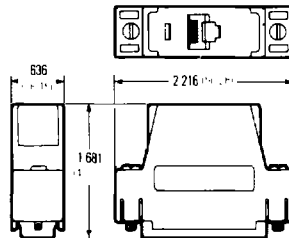
Environmental Characteristics

Operating Temperature: -55° C to +85° C

Dimensions

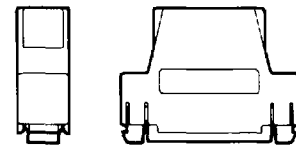
Type 1

Slim-line, one-piece hood with two, captive 4-40 mounting screws. Best for most applications.



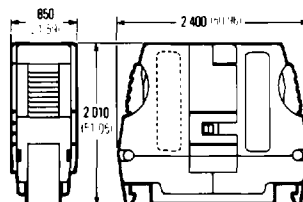
Type 3

Used when mating to a cable connector that has a hood with spring latches, this slim-line, one-piece hood is equipped with latching blocks for fast, easy, secure connection/disconnection without screws.



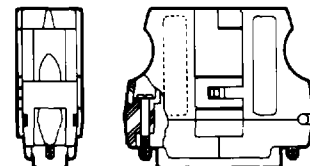
Type 4

Used when mating to a cable or panel mounted connector that has latch blocks, this two-piece adapter hood with spring latches allows for fast, easy, secure connection/disconnection without screws.



Type 5

Two-piece adapter hood with filler ends and two, captive 4-40 mounting screws snaps together for convenient kit assembly.



**Ordering Information
Plug Style Adapter, Pre-Wired**

Part Number	Hood Type	Modular Jack Position								Jumpers
		1	2	3	4	5	6	7	8	
25 Position D-Subminiature to RJ45 8-wire modular jack										
FM-001	Type 1	7(AB)	4(CA)	2(BA)	20(CD)	3(BB)	8(CF)	7(AB)	5(CB)	—
FM-002	Type 1	—	8(CF)	1	2(BA)	7(AB)	3(BB)	20(CD) & 6(CC)	—	4 to 5†
FM-003	Type 1	—	20(CD) & 6(CC)	1	3(BB)	7(AB)	2(BA)	8(CF)	—	4 to 5†
FM-004	Type 4	7(AB)	4(CA)	3(BB)	8(CF)	2(BA)	20(CD)	7(AB)	5(CB)	—
FM-005	Type 1	1	5(CB)	2(BA)	20(CD)	3(BB)	8(CF)	7(AB)	4(CA)	—
FM-007	Type 1	1	4(CA)	3(BB)	8(CF)	2(BA)	20(CD)	7(AB)	5(CB)	—
FM-009	Type 4	1	5(CB)	2(BA)	20(CD)	3(BB)	8(CF)	7(AB)	4(CA)	—
FM-010	Type 1	1	4(CA)	3(BB)	8(CF)	2(BA)	20(CD) & 6(CC)	7(AB)	5(CB)	—
FM-011	Type 4	1	4(CA)	3(BB)	8(CF)	2(BA)	20(CD)	7(AB)	5(CB)	—
FM-012	Type 4	1	5(CB)	2(BA)	20(CD)*	3(BB)	8(CF)**	7(AB)	4(CA)	—
FM-014	Type 1	—	—	19(SCA)	14(SBA)	7(AB)	16(SBB)	—	—	—
FM-015	Type 1	—	—	8(CF)	3(BB)	7(AB)	2(BA)	—	—	4 to 5†
FM-017	Type 1	7(AB)	5(CB)	3(BB)	8(CF)	2(BA)	20(CD)	7(AB)	4(CA)	—
FM-018	Type 1	7(AB)	3(BB)	7(AB)	21 (RL/GC)	21 (RL/GC)	9	2(BA)	7(AB)	4 to 5† 6 to 20†
FM-020	Type 1	7(AB)	5(CB)	3(BB)	6(CC) & 8(CF)	2(BA)	20(CD)	7(AB)	4(CA)	—
FM-021	Type 1	7(AB)	4(CA)	2(BA)	20(CD)	3(BB)	6(CC) & 8(CF)	7(AB)	5(CB)	—
FM-023	Type 1	6(CC)	20(CD)	7(AB)	2(BA)	4(CA)	3(BB)	8(CF)	5(CB)	—
FM-025	Type 1	15(DB)	14(SBA)	11	3(BB)	13(SCB)	4(CA)	12(SCF/CI)	2(BA)	—
FM-028	Type 1	1	—	2(BA)	4(CA)	3(BB)	5(CB)	7(AB)	—	9 to 20†
FM-029	Type 1	1	5(CB)	2(BA)	20(CD)	3(BB)	8(CF)	7(AB)	4(CA)	—
FM-030	Type 1	5(CB)	6(CC)	3(BB)	20(CD)	2(BA)	7(AB)	22(CE)	4(CA)	—
FM-031	Type 1	4(CA)	20(CD)	2(BA)	6(CC)	3(BB)	7(AB)	22(CE)	5(CB)	—
FM-032	Type 1	1	4(CA)	2(BA)	20(CD)	3(BB)	8(CF)	7(AB)	5(CB)	—
FM-033	Type 1	—	—	2(BA)	4(CA)	3(BB)	8(CF)	7(AB)	—	—
FM-036	Type 1	1	20(CD)	3(BB)	—	2(BA)	—	7(AB)	5(CB)	—
FM-045	Type 1	1	5(CB)	2(BA)	20(CD)	3(BB)	6(CC) & 8(CF)	7(AB)	4(CA)	—
25 Position D-Subminiature to RJ11 6-wire modular jack										
FM-053	Type 1	—	2(BA)	—	7(AB)	3(BB)	—	—	—	—
15 Position D-Subminiature to RJ45 8-wire modular jack										
FM15-001	Type 1	15(DB)	14(SBA)	11	3(BB)	13(SCB)	4(CA)	12(SCF/LI)	2(BA)	—
FM15-002	Type 1	1	4(CA)	3(BB)	8(CF)	2(BA)	9	7(AB)	5(CB)	—
FM15-003	Type 1	5(CB)	7(AB)	8(CF)	3(BB)	9	2(BA)	4(CA)	1	—

Plug Style Adapter Kits

Part Number	Hood Type	Modular Jack Position								Jumpers
		1	2	3	4	5	6	7	8	
25 Position D-Subminiature to RJ45 8-wire modular jack										
FM-006	Type 5	Unassembled Kit (Requires plier type termination tool, SD-UC. See page 46.)								
FM-016	Type 1	Unassembled Kit (Requires plier type termination tool, SD-UC. See page 46.)								
FM-034	Type 4	Unassembled Kit (Requires plier type termination tool, SD-UC. See page 46.)								
25 position D-Subminiature to RJ11 6-wire modular jack										
FM-013	Type 5	Unassembled Kit (Requires plier type termination tool, SD-UC. See page 46.)								
FM-052	Type 1	Unassembled Kit (Requires plier type termination tool, SD-UC. See page 46.)								

* Diode assembled between modular jack position #4 and D-Subminiature position #20.

** Diode assembled between D-Subminiature positions #8 and #20.

† D-Subminiature positions are jumpered together.

Ordering Information

Socket Style Adapter, Pre-Wired

Part Number	Hood Type	Modular Jack Position								Jumpers
		1	2	3	4	5	6	7	8	
25 Position D-Subminiature to RJ45 8-wire modular jack										
FF-001	Type 1	7(AB)	4(CA)	2(BA)	20(CD)	3(BB)	8(CF)	7(AB)	5(CB)	—
FF-002	Type 3	7(AB)	4(CA)	2(BA)	20(CD)	3(BB)	8(CF)	7(AB)	5(CB)	—
FF-004	Type 1	—	8(CF)	1	2(BA)	7(AB)	3(BB)	20(CD) & 6(CC)	—	4 to 5†
FF-005	Type 1	—	20(CD) & 6(CC)	1	3(BB)	7(AB)	2(BA)	8(CF)	—	4 to 5†
FF-006	Type 1	1	4(CA)	3(BB)	8(CF)	2(BA)	20(CD)	7(AB)	5(CB)	—
FF-007	Type 4	1	4(CA)	3(BB)	8(CF)	2(BA)	20(CD)	7(AB)	5(CB)	—
FF-008	Type 1	1	5(CB)	2(BA)	20(CD)	3(BB)	8(CF)	7(AB)	4(CA)	—
FF-009	Type 1	7(AB)	3(BB)	8(CF)	4(CA)	20(CD)	5(CB)	6(CC)	2(BA)	—
FF-010	Type 1	1	4(CA)	3(BB)	8(CF)	2(BA)	20(CD) & 6(CC)	7(AB)	5(CB)	—
FF-012	Type 1	7(AB)	4(CA)	2(BA)	20(CD)	3(BB)	6(CC) & 8(CF)	7(AB)	5(CB)	—
FF-013	Type 1	6(CC)	20(CD)	7(AB)	2(BA)	4(CA)	3(BB)	8(CF)	5(CB)	—
FF-015	Type 1	2(BA)	3(BB)	4(CA)	6(CC)	8(CF)	7(AB)	9	20(CD)	—
FF-016	Type 1	7(AB)	5(CB)	3(BB)	8(CF)	2(BA)	20(CD)	7(AB)	4(CA)	—
FF-019	Type 1	20(CD)	7(AB)	5(CB)	3(BB)	4(CA)	2(BA)	8(CF)	1	—
FF-028	Type 1	1	4(CA)	3(BB)	8(CF)	2(BA)	20(CD)	7(AB)	5(CB)	8 to 5†
FF-030	Type 1	5(CB)	6(CC)	3(BB)	20(CD)	2(BA)	7(AB)	22(CE)	4(CA)	—
FF-031	Type 1	4(CA)	20(CD)	2(BA)	6(CC)	3(BB)	7(AB)	22(CE)	5(CB)	—
FF-038	Type 1	7(AB)	4(CA)	3(BB)	20(CD)	2(BA)	6(CC) & 8(CF)	7(AB)	5(CB)	—

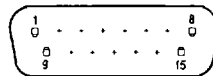
Socket Style Adapter Kits

Part Number	Hood Type	Modular Jack Position								Jumpers
		1	2	3	4	5	6	7	8	
25 Position D-Subminiature to RJ45 8-wire modular jack										
FF-003	Type 5	Unassembled Kit (Requires plier type termination tool, SD-UC. See page 46.)								
FF-011	Type 1	Unassembled Kit (Requires plier type termination tool, SD-UC. See page 46.)								
25 Position D-Subminiature to 10-wire modular jack										
FF-022	Type 1	Unassembled Kit (Requires plier type termination tool, SD-UC. See page 46.)								

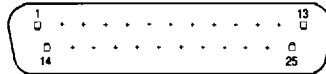
† D-Subminiature positions are jumpered together.

Pin Positions— Mating Side

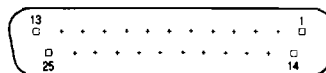
D-Subminiature



15 Size Plug

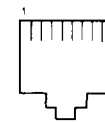


25 Size Plug

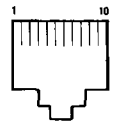


25 Size Socket

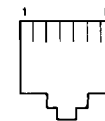
Modular Jack



Modular Jack Socket
Type RJ45



Modular Jack Socket
10-Wire



Modular Jack Socket
Type RJ11