

SMA Coaxial Connectors

A/D Electronics' connectors are semi-precision, sub miniature, high frequency connectors which offer reliable broadband performance DC to 18GHz with low reflection and constant 50 ohm impedance.

The main features are high mechanical strength, high durability and low VSWR. Matured design principles, careful manufacturing at all stages and a thorough quality assurance organization are the basis for the well known quality of **A/D Electronics'** connectors.

ELECTRICAL

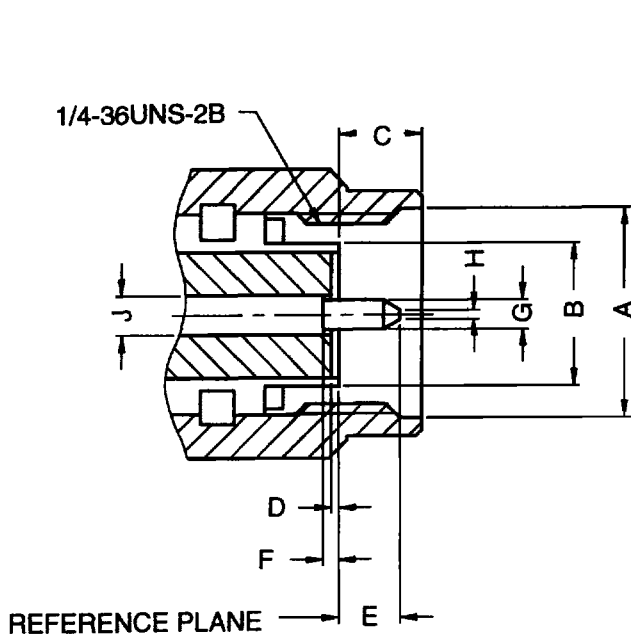
Impedance	50 ohm
Frequency range	*Semi-rigid cable for .141" or .085" O.D. copper jacket: 0-18 GHz *Flexible cable: 0-12.4 GHz
Voltage rating	*RG-58, 141, 142, 223: 500V peak *RG-174, 188, 316: 375V peak
Dielectric withstanding voltage	*.141" & RG-58 cable group: 1000V RMS *.085" & RG-316 cable group: 750V RMS
VSWR -straight Connectors *fln GHz	*.141" semi-rigid cable group: 1.05 + .005f *RG-58 cable group: 1.15 + .01f *RG-174 cable group: 1.15 + .02f *RG-178 cable group: 1.20 + .025f
Contact resistance	Center: 2.0 miliohms Body: 2.0 miliohms Braid to body: 0.5 miliohms
Insulation resistance	5000 Megohms
RF leakage	-90 dB min. at 2-3 GHz
Insertion loss	dB max. = $.06\sqrt{\text{freq. GHz}}$. Test frequency @6.0 GHz

MILITARY SPECIFICATIONS
MIL-C-39012 & MIL-C-83517 SMA

MATERIAL

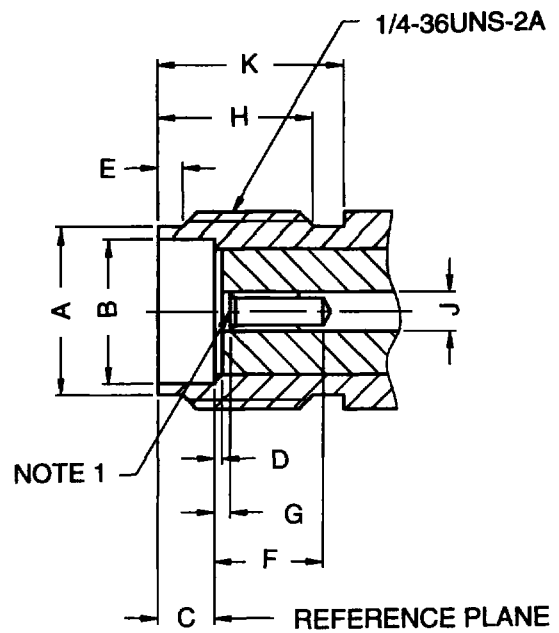
PARTS NAME		MIL STANDARD	ECONOMIC TYPE
Body, coupling nut, other metal parts		Non-magnetic stainless steel per QQ-S-764 #303 finish: blank, passivated	Brass per QQ-B-626 finish: nickel or gold per requirement
Contacts	Male	Brass per QQ-B-626	Brass per QQ-B-626
	Female	Beryllium copper per QQ-C-530 heat treated per MIL-H-7199	Beryllium copper per QQ-C-530 heat treated per MIL-H-7199
		Finish: .00005" min gold plated per MIL-G-45204 type 1, Grade C.	Finish: .00005" min gold plated per MIL-G-45204 type 1, Grade C.
Insulator		PTFE	PTFE
Gasket		Silicone rubber	Silicone rubber
Crimp ferrule		Seamless copper tubing alloy	Seamless copper tubing alloy
Selection Guide		*Suitable for direct mounting on aluminum panels *Lower cost	*For commercial application only *Lowest Cost

SMA Coaxial Connectors



PLUG

Letter	Millimeters	
	Minimum	Maximum
A	6.35	6.73
B	4.53	4.59
C	2.54	3.43
D	0.00	0.25
E	1.91	2.54
F	0.00	0.25
G	0.90	0.94
H	0.00	0.38
J	1.24	1.30



JACK

Letter	Millimeters	
	Minimum	Maximum
A	5.28	5.49
B	4.60	4.67
C	1.88	1.98
D	0.00	0.25
E	0.38	1.14
F	2.92	-
G	0.00	0.25
H	4.32	-
J	1.24	1.30
K	5.54	-

Note: 1. I.D. TO MEET VSWR AND CONTACT RESISTANCE WHEN MATED WITH .9/.94MM DIA. PIN.

All dimensions are shown in millimeters

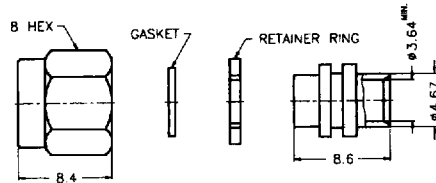
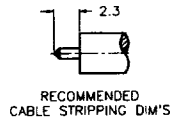
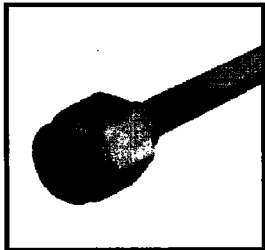
SMA Coaxial Connectors

Example-indicate parts number for order

SMA1181K1-B/15G T 50G- .141 -50

MODEL NO.	METAL PARTS FINISH	INSULATOR	CENTER CONTACT FINISH	CABLE GROUP	IMPEDANCE
	S/P=Stainless steel, passivated B/N=Brass, Nickel B/3G=Brass, 3u" Au B/15G=Brass, 15u" Au	T=Teflon	50G=50u"Au	58C/U=RG58C/U 174/U=RG174/U .141=.141 SEMI-RIGID .085=.085 SEMI-RIGID	50=50ohm

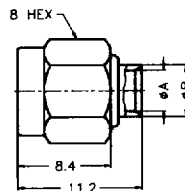
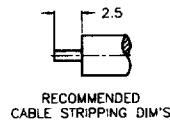
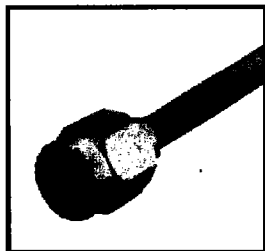
STRAIGHT CABLE PLUG
-HIGH VOLTAGE



MODEL NO:SMA1181K1

CABLE: .141" Cable

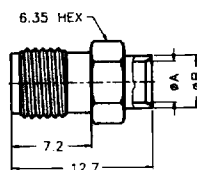
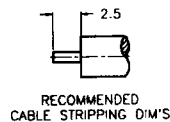
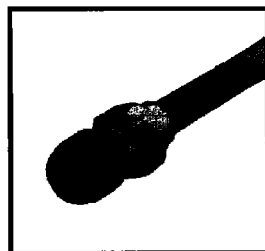
STRAIGHT CABLE PLUG
-WITH CONTACT



MODEL NO:SMA1181A1

CABLE: *.085" Cable A=2.2min, B=3.0min
*.141" Cable A=3.6min, B=4.6min

STRAIGHT CABLE JACK



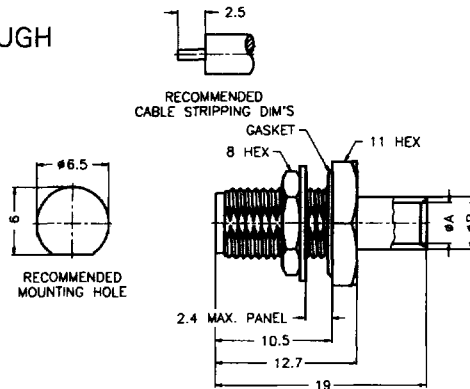
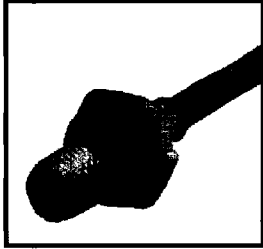
MODEL NO:SMA6181A1

CABLE: *.085" Cable A=2.2min, B=3.0min
*.141" Cable A=3.6min, B=4.6min

All dimensions are shown in millimeters

SMA Coaxial Connectors

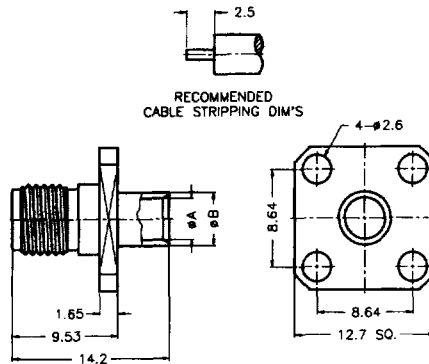
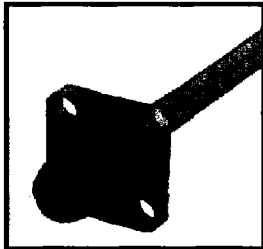
**BULKHEAD FEEDTHROUGH
CABLE JACK**



MODEL NO:SMA6481A1

CABLE: *.085" Cable A=2.2min, B=3.0min
*.141" Cable A=3.6min, B=4.6min

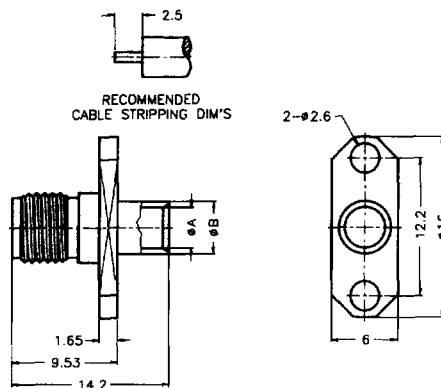
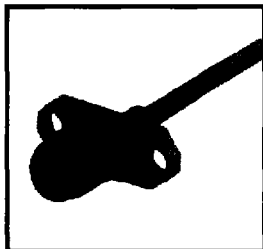
**PANEL MOUNT CABLE
JACK -4 HOLE SQ. FLANGE**



MODEL NO:SMA6581A1

CABLE: *.085" Cable A=2.2min, B=3.0min
*.141" Cable A=3.6min, B=4.6min

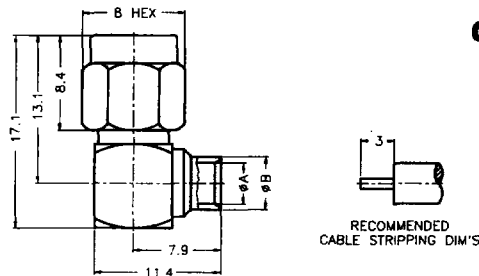
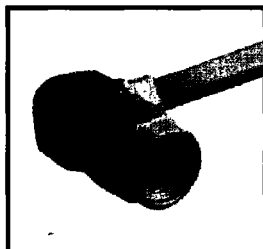
**PANEL MOUNT CABLE
JACK -2 HOLE FLANGE**



MODEL NO:SMA6581B1

CABLE: *.085" Cable A=2.2min, B=3.0min
*.141" Cable A=3.6min, B=4.6min

**RIGHT ANGLE CABLE PLUG
DC -12.4 GHz**



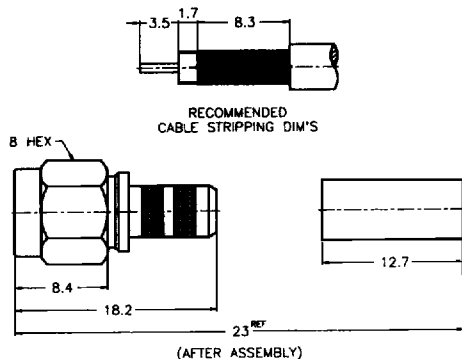
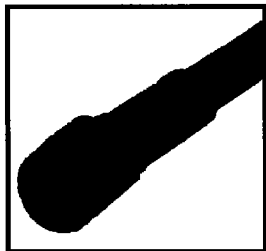
MODEL NO:SMA1182A2

CABLE: *.085" Cable A=2.2min, B=3.0min
*.141" Cable A=3.6min, B=4.6min

All dimensions are shown in millimeters

SMA Coaxial Connectors

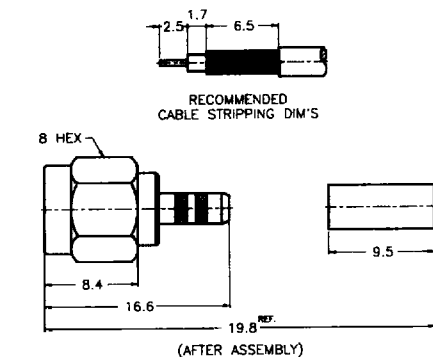
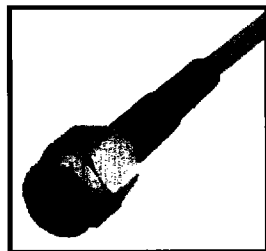
STRAIGHT CRIMP PLUG
-CAPTIVE CONTACT



MODEL NO:SMA1111A1

CABLE: RG-58/U, 141/U, 142/U, 223/U

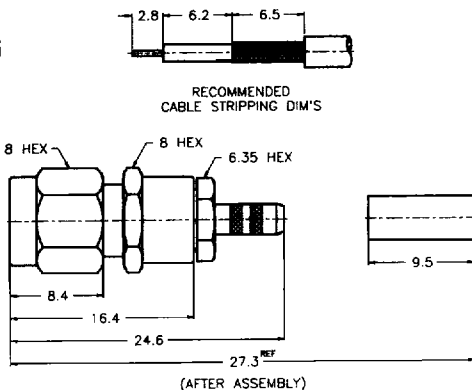
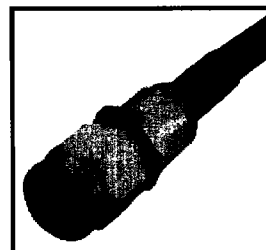
STRAIGHT CRIMP PLUG
-CAPTIVE CONTACT



MODEL NO:SMA1111A2

CABLE: RG-174/U, 188/U, 316/U

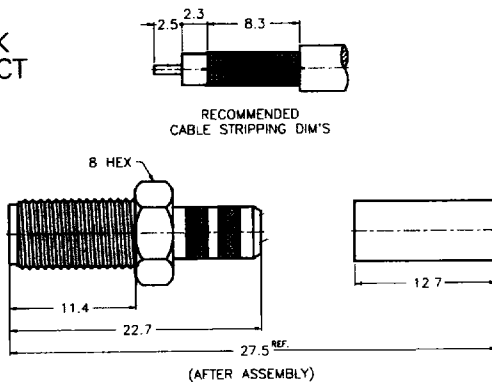
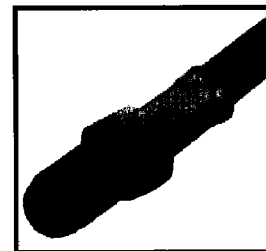
STRAIGHT CRIMP PLUG
-CAPTIVE CONTACT



MODEL NO:SMA1111G1

CABLE: RG-174/U, 188/U, 316/U

STRAIGHT CRIMP JACK
-NON CAPTIVE CONTACT



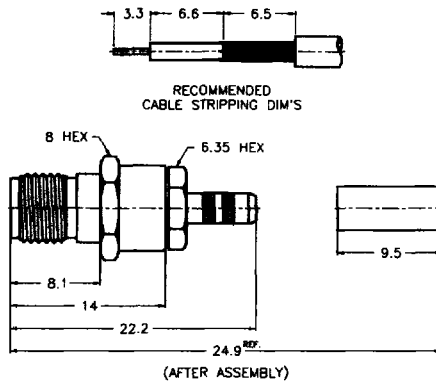
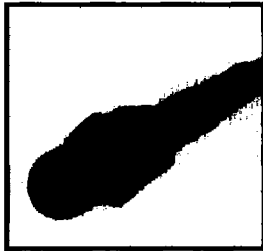
MODEL NO:SMA6111A1

CABLE: RG-58/U, 141/U, 142/U, 223/U

All dimensions are shown in millimeters

SMA Coaxial Connectors

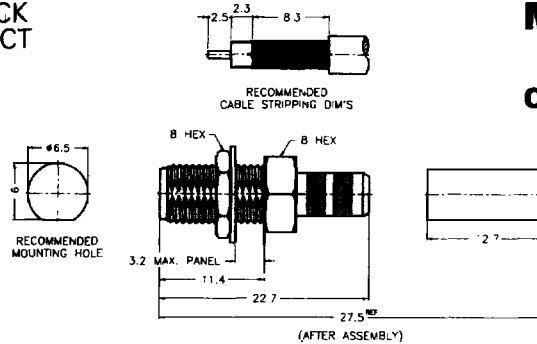
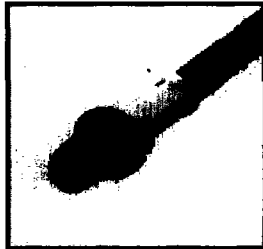
**STRAIGHT CRIMP JACK
-CAPTIVE CONTACT**



MODEL NO:SMA6111G1

CABLE: RG-174/U, 188/U, 316/U

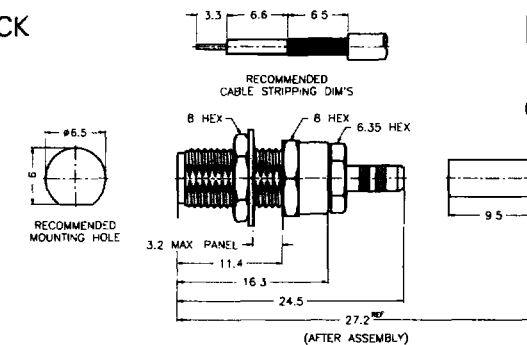
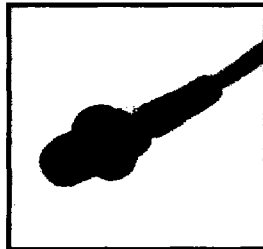
**BULKHEAD CRIMP JACK
-NON CAPTIVE CONTACT**



MODEL NO:SMA6411A1

CABLE: RG-58/U, 141/U, 142/U, 223/U

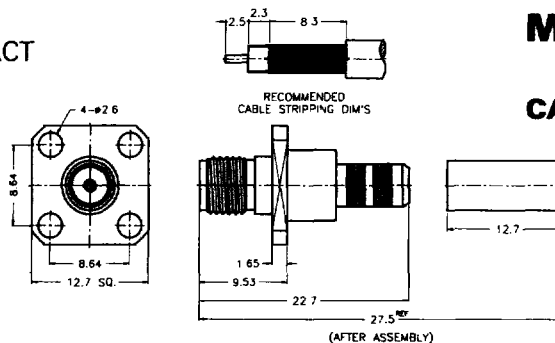
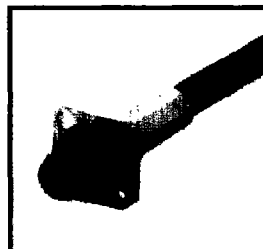
**BULKHEAD CRIMP JACK
-CAPTIVE CONTACT**



MODEL NO:SMA6411G1

CABLE: RG-174/U, 188/U, 316/U

**PANEL CRIMP JACK
-NON CAPTIVE CONTACT**



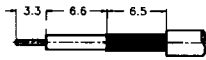
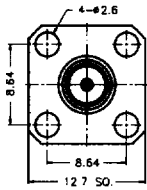
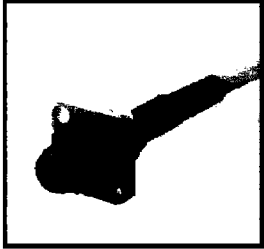
MODEL NO:SMA6511A1

CABLE: RG-58/U, 141/U, 142/U, 223/U

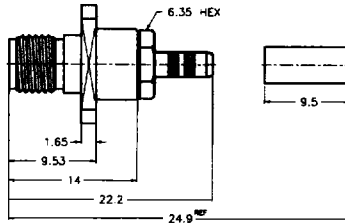
All dimensions are shown in millimeters

SMA Coaxial Connectors

PANEL CRIMP JACK
-CAPTIVE CONTACT



RECOMMENDED
CABLE STRIPPING DIM'S

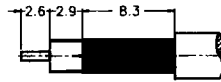
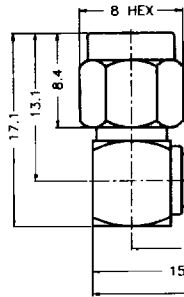
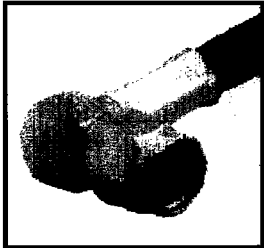


(AFTER ASSEMBLY)

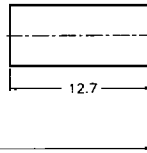
MODEL NO:SMA6511G1

CABLE: RG-174/U, 188/U, 316/U

RIGHT ANGLE CRIMP PLUG



RECOMMENDED
CABLE STRIPPING DIM'S

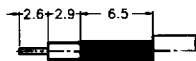
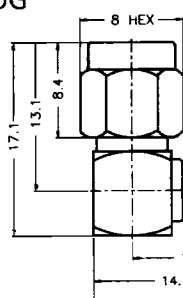


(AFTER ASSEMBLY)

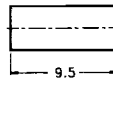
MODEL NO:SMA1112A4

CABLE: RG-58/U, 141/U, 142/U, 223/U

RIGHT ANGLE CRIMP PLUG



RECOMMENDED
CABLE STRIPPING DIM'S



(AFTER ASSEMBLY)

MODEL NO:SMA1112A3

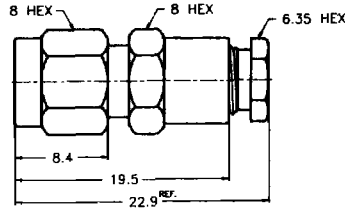
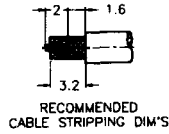
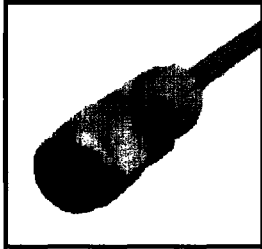
CABLE: RG-174/U, 188/U, 316/U

All dimensions are shown in millimeters



SMA Coaxial Connectors

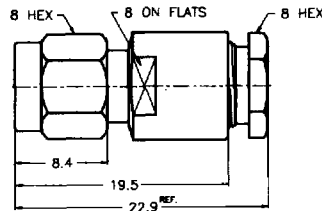
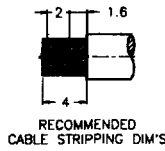
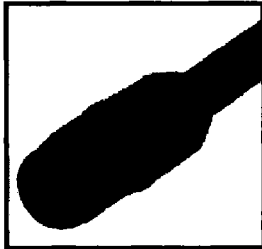
STRAIGHT CLAMP PLUG



MODEL NO:SMA1141C1

CABLE: RG-174/U, 188/U, 316/U

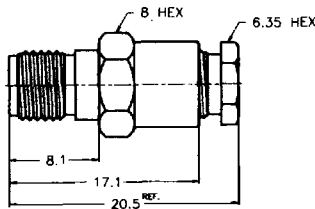
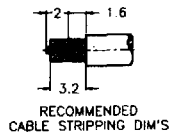
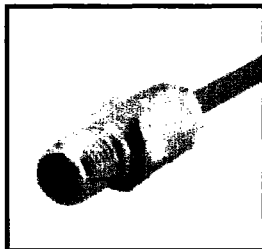
STRAIGHT CLAMP PLUG



MODEL NO:SMA1141C2

CABLE: RG-58/U, 141/U, 142/U, 223/U

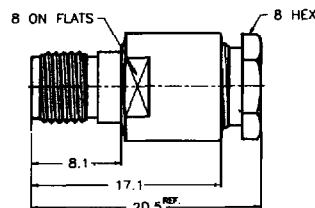
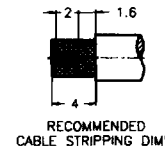
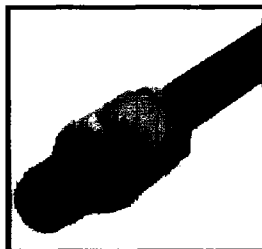
STRAIGHT CLAMP JACK



MODEL NO:SMA6141C1

CABLE: RG-174/U, 188/U, 316/U

STRAIGHT CLAMP JACK



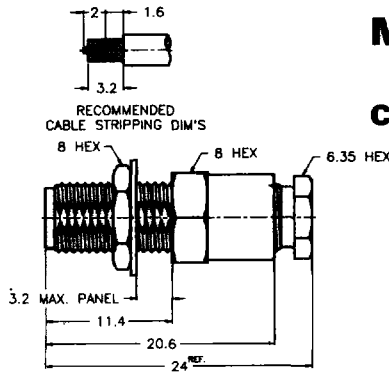
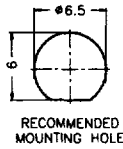
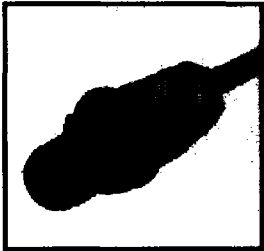
MODEL NO:SMA6141C2

CABLE: RG-58/U, 141/U, 142/U, 223/U

All dimensions are shown in millimeters

SMA Coaxial Connectors

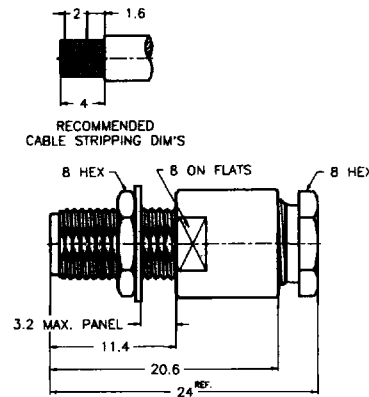
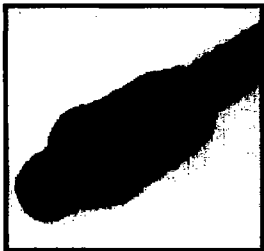
BULKHEAD CLAMP JACK



MODEL NO: SMA6441C1

CABLE: RG-174/U, 188/U, 316/U

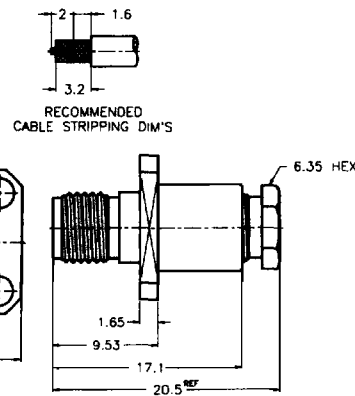
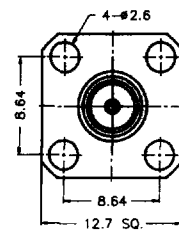
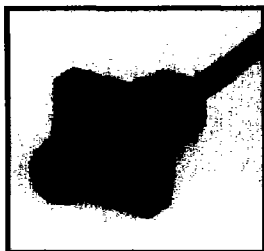
BULKHEAD CLAMP JACK



MODEL NO: SMA6441C2

CABLE: RG-58/U, 141/U, 142/U, 223/U

PANEL CLAMP JACK



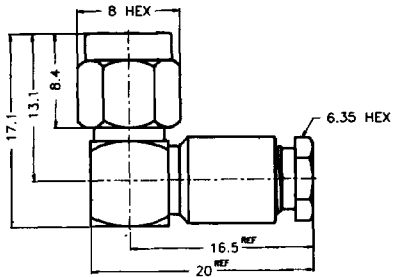
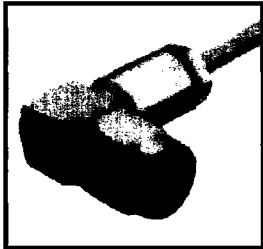
MODEL NO: SMA6541C1

CABLE: RG-174/U, 188/U, 316/U

All dimensions are shown in millimeters

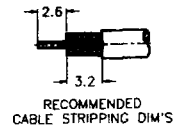
SMA Coaxial Connectors

RIGHT ANGLE
CLAMP PLUG



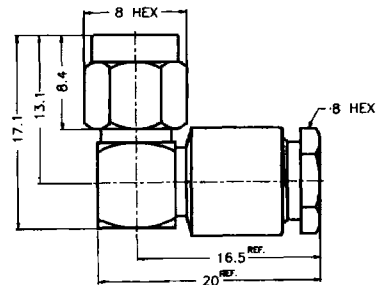
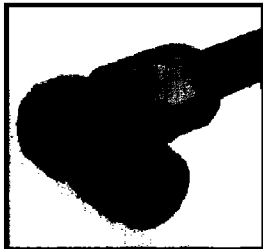
MODEL NO:SMA1142C1

CABLE: RG-174/U, 188/U, 316/U



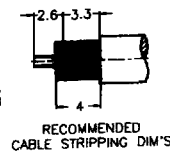
RECOMMENDED
CABLE STRIPPING DIM'S

RIGHT ANGLE
CLAMP PLUG



MODEL NO:SMA1142C2

CABLE: RG-58/U, 141/U, 142/U, 223/U



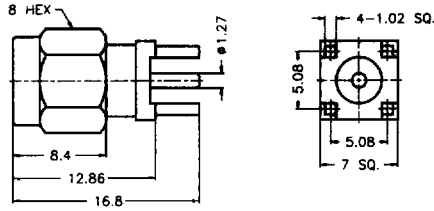
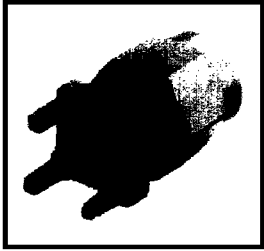
RECOMMENDED
CABLE STRIPPING DIM'S

All dimensions are shown in millimeters

SMA Coaxial Connectors

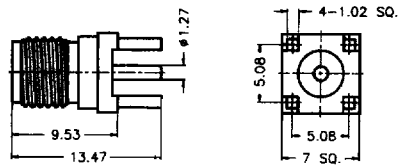
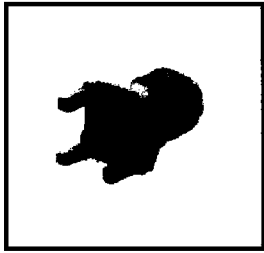
STRAIGHT PLUG FOR
P.C. BOARD

MODEL NO:SMA1251A1



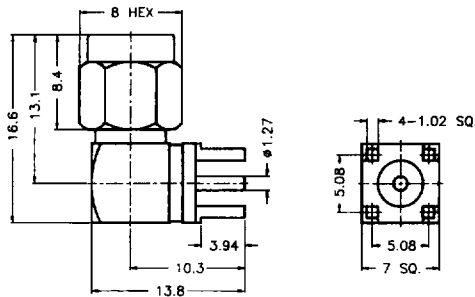
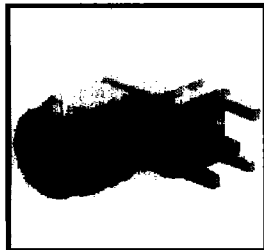
STRAIGHT JACK FOR
P.C. BOARD

MODEL NO:SMA6251A1



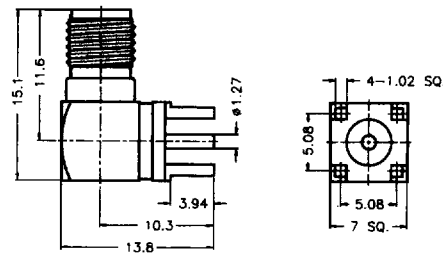
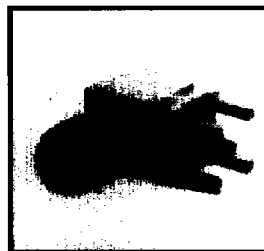
RIGHT ANGLE PLUG FOR
P.C. BOARD

MODEL NO:SMA1252A2



RIGHT ANGLE JACK FOR
P.C. BOARD

MODEL NO:SMA6252A2

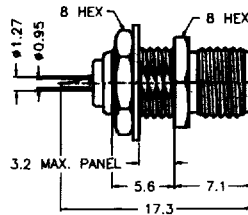
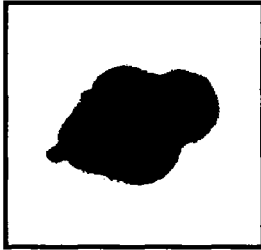


All dimensions are shown in millimeters

SMA Coaxial Connectors

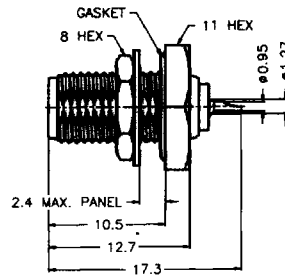
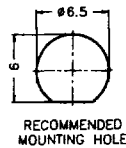
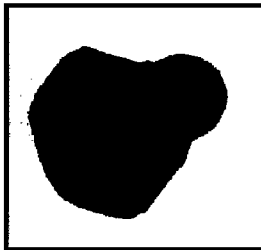
BULKHEAD JACK RECEPTACLE
-FRONT MOUNT

MODEL NO:SMA6351B1



BULKHEAD JACK RECEPTACLE
-REAR MOUNT

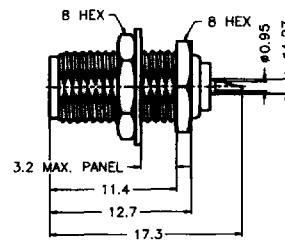
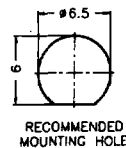
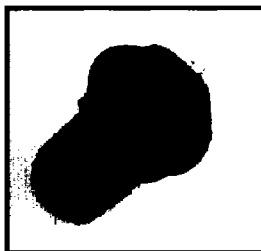
MODEL NO:SMA6451A1



CABLE: *Flange O.D. at 11 HEX

BULKHEAD JACK RECEPTACLE
-REAR MOUNT

MODEL NO:SMA6451B1



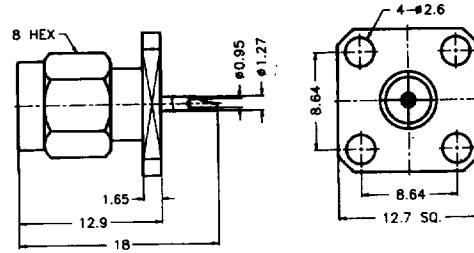
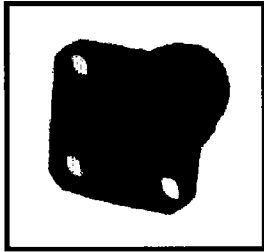
CABLE: *Flange O.D. at 8 HEX

All dimensions are shown in millimeters

SMA Coaxial Connectors

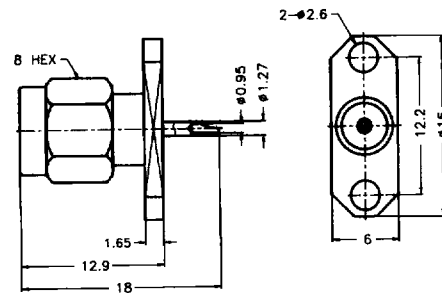
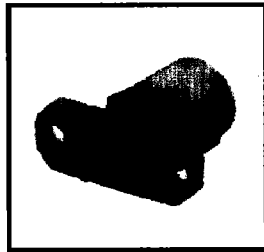
PANEL MOUNT PLUG
RECEPTACLE -4 HOLE SQ.
FLANGE

MODEL NO:SMA1551A1



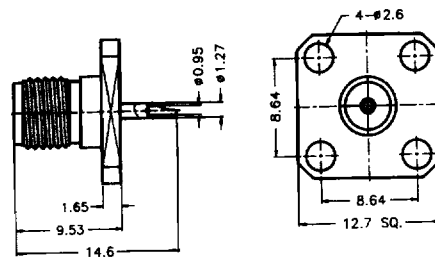
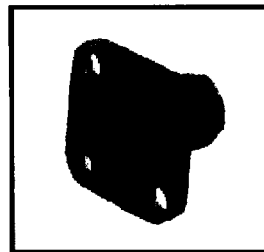
PANEL MOUNT PLUG
RECEPTACLE -2 HOLE
FLANGE

MODEL NO:SMA1551B1



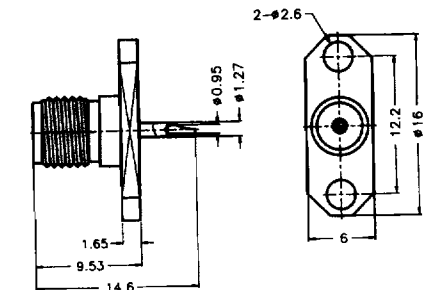
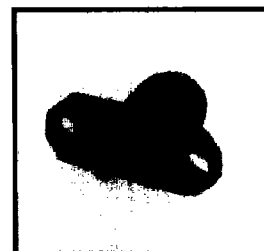
PANEL MOUNT JACK
RECEPTACLE -4 HOLE SQ.
FLANGE

MODEL NO:SMA6551A1



PANEL MOUNT JACK
RECEPTACLE -2 HOLE
FLANGE

MODEL NO:SMA6551B1

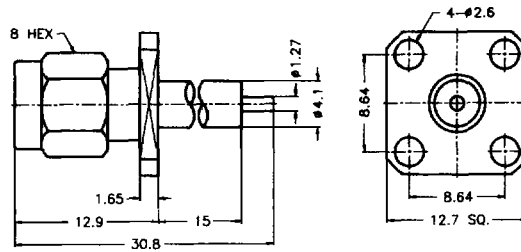
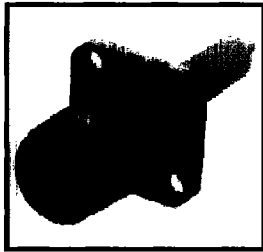


All dimensions are shown in millimeters

SMA Coaxial Connectors

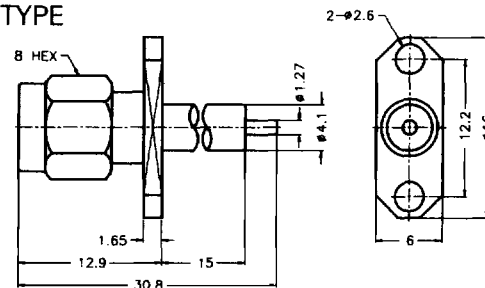
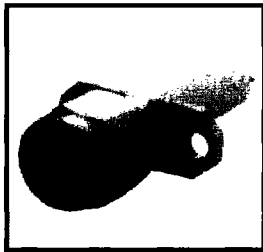
PANEL MOUNT PLUG
RECEPTACLE -4 HOLE SQ.
FLANGE-EXPOSED TFE TYPE

MODEL NO:SMA1551E1



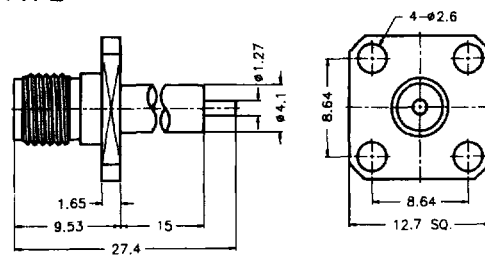
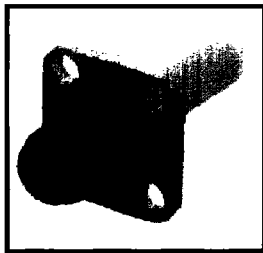
PANEL MOUNT PLUG
RECEPTACLE -2 HOLE
FLANGE-EXPOSED TFE TYPE

MODEL NO:SMA1551F1



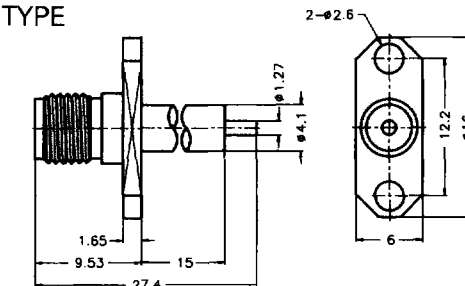
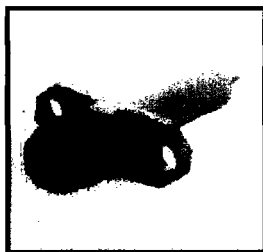
PANEL MOUNT JACK
RECEPTACLE -4 HOLE SQ.
FLANGE-EXPOSED TFE TYPE

MODEL NO:SMA6551E1



PANEL MOUNT JACK
RECEPTACLE -2 HOLE
FLANGE-EXPOSED TFE TYPE

MODEL NO:SMA6551F1

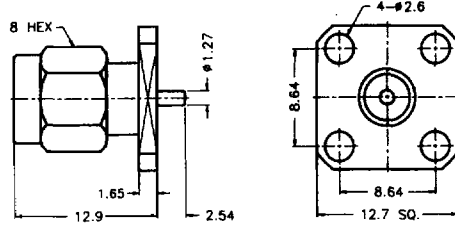
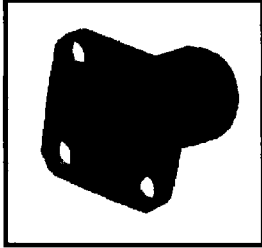


All dimensions are shown in millimeters

SMA Coaxial Connectors

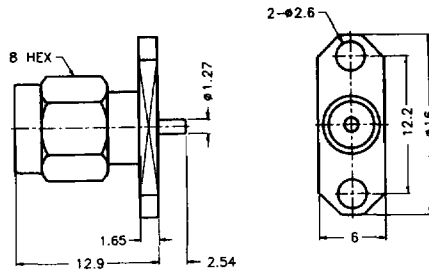
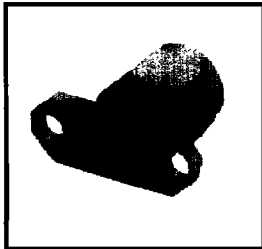
PANEL MOUNT PLUG
RECEPTACLE -4 HOLE SQ.
FLANGE-BLUNT POST

MODEL NO:SMA1551E9



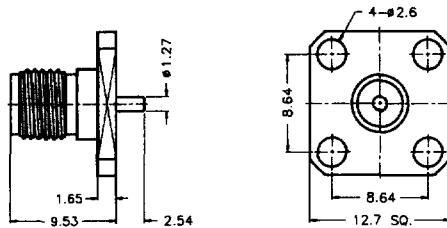
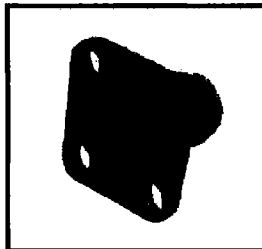
PANEL MOUNT PLUG
RECEPTACLE -2 HOLE
FLANGE-BLUNT POST

MODEL NO:SMA1551F9



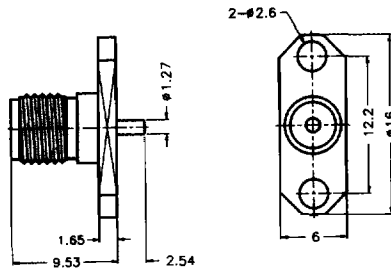
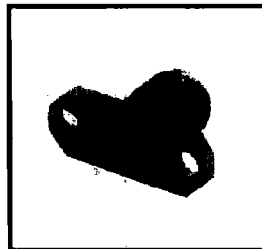
PANEL MOUNT JACK
RECEPTACLE -4 HOLE SQ.
FLANGE-BLUNT POST

MODEL NO:SMA6551E9



PANEL MOUNT JACK
RECEPTACLE -2 HOLE
FLANGE-BLUNT POST

MODEL NO:SMA6551F9

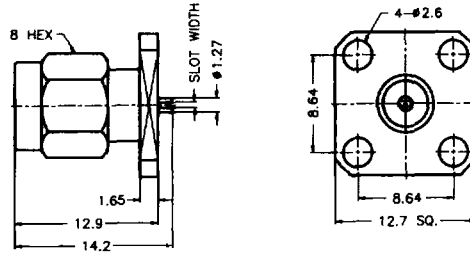
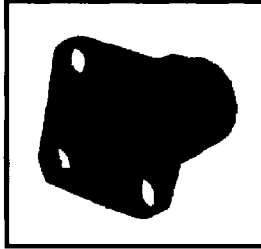


All dimensions are shown in millimeters



SMA Coaxial Connectors

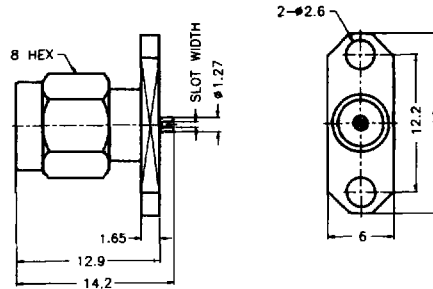
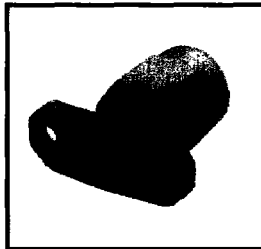
PANEL MOUNT PLUG
RECEPTACLE -4 HOLE SQ.
FLANGE



MODEL NO:SMA1551C1

REMARK: *Size of slot width:
0.3, 0.5 & 0.7

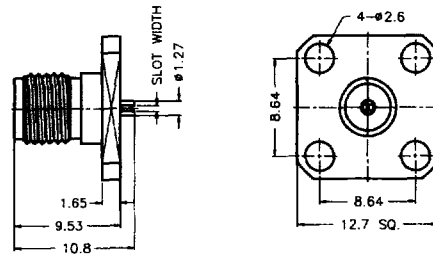
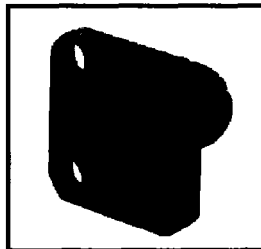
PANEL MOUNT PLUG
RECEPTACLE -2 HOLE
FLANGE



MODEL NO:SMA1551D1

REMARK: *Size of slot width:
0.3, 0.5 & 0.7

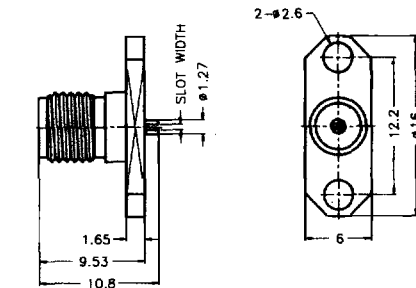
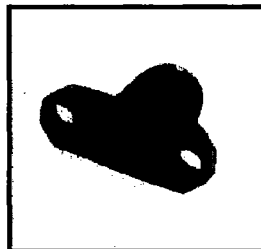
PANEL MOUNT JACK
RECEPTACLE -4 HOLE SQ.
FLANGE



MODEL NO:SMA6551C1

REMARK: *Size of slot width:
0.3, 0.5 & 0.7

PANEL MOUNT JACK
RECEPTACLE -2 HOLE
FLANGE



MODEL NO:SMA6551D1

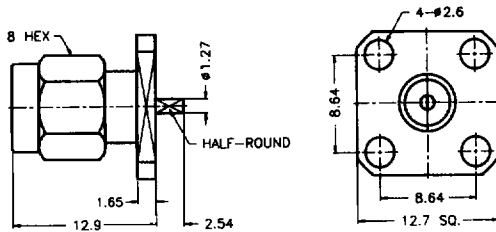
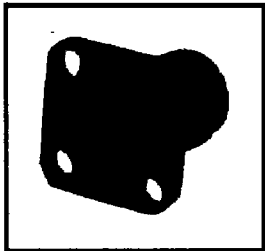
REMARK: *Size of slot width:
0.3, 0.5 & 0.7

All dimensions are shown in millimeters

SMA Coaxial Connectors

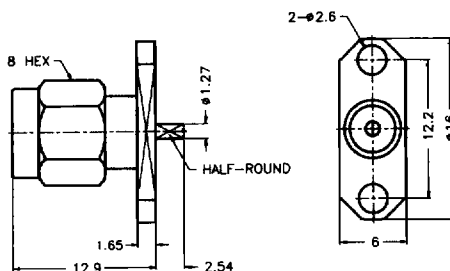
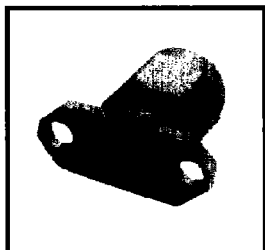
PANEL MOUNT PLUG RECEPTACLE
 -4 HOLE SQ. FLANGE
 -HALF ROUND TERMINAL

MODEL NO:SMA1551G1



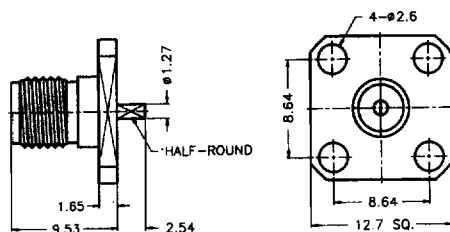
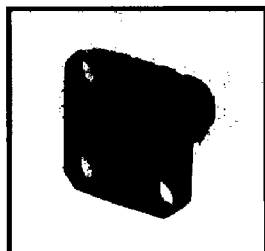
PANEL MOUNT PLUG RECEPTACLE
 -2 HOLE FLANGE
 HALF ROUND TERMINAL

MODEL NO:SMA1551H1



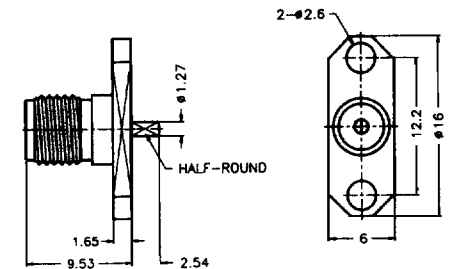
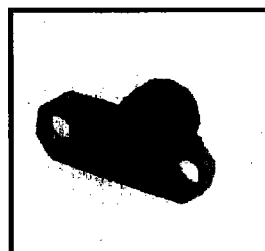
PANEL MOUNT JACK RECEPTACLE
 -4 HOLE SQ. FLANGE
 -HALF ROUND TERMINAL

MODEL NO:SMA6551G1



PANEL MOUNT JACK RECEPTACLE
 -2 HOLE FLANGE
 -HALF ROUND TERMINAL

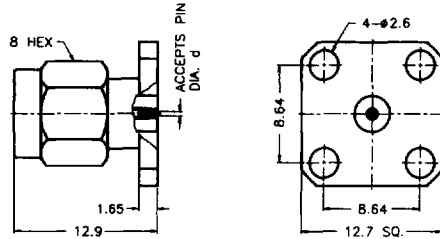
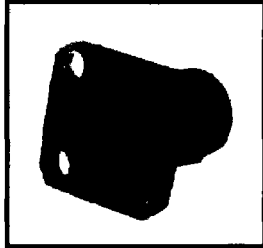
MODEL NO:SMA6551H1



All dimensions are shown in millimeters

SMA Coaxial Connectors

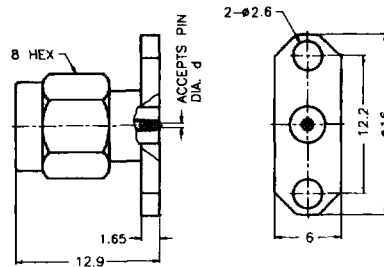
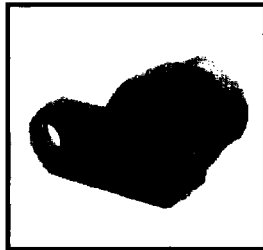
PANEL MOUNT PLUG RECEPTACLE
-4 HOLE SQ. FLANGE -TERMINAL
FLUSH TO BELOW FLANGE



MODEL NO: SMA1551K1

REMARK: *Pin size of
d=.012", .015", .018"

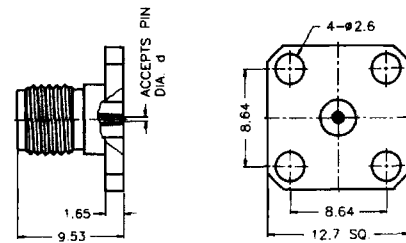
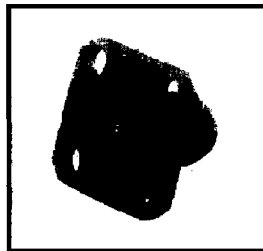
PANEL MOUNT PLUG RECEPTACLE
-2 HOLE FLANGE -TERMINAL
FLUSH TO BELOW FLANGE



MODEL NO: SMA1551L1

REMARK: *Pin size of
d=.012", .015", .018"

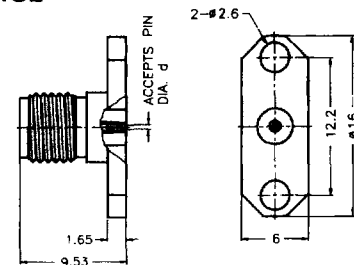
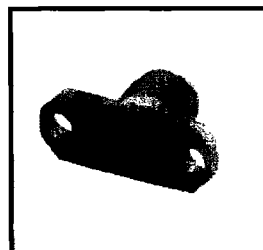
PANEL MOUNT JACK RECEPTACLE
-4 HOLE SQ. FLANGE -TERMINAL
FLUSH TO BELOW FLANGE



MODEL NO: SMA6551K1

REMARK: *Pin size of
d=.012", .015", .018"

PANEL MOUNT JACK RECEPTACLE
-2 HOLE FLANGE -TERMINAL
FLUSH TO BELOW FLANGE



MODEL NO: SMA6551L1

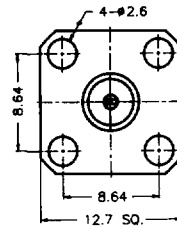
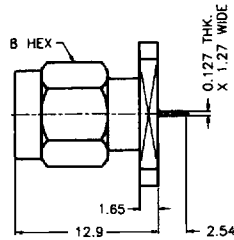
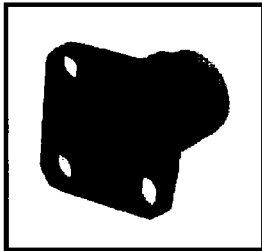
REMARK: *Pin size of
d=.012", .015", .018"

All dimensions are shown in millimeters

SMA Coaxial Connectors

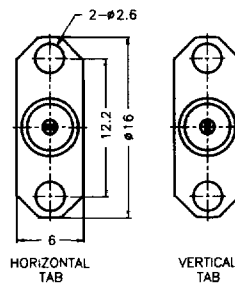
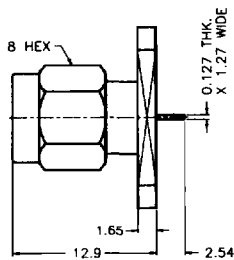
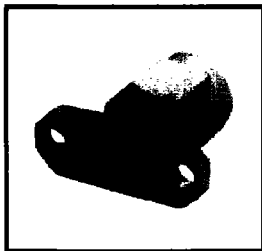
PANEL MOUNT PLUG
RECEPTACLE -4 HOLE SQ.
FLANGE - TAB TERMINAL

MODEL NO:SMA1551M1



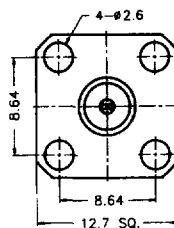
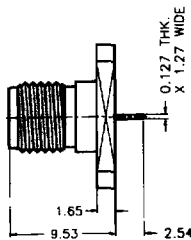
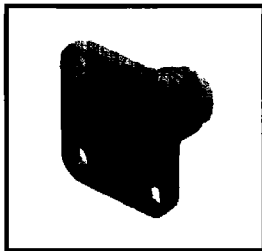
PANEL MOUNT PLUG
RECEPTACLE -2 HOLE
FLANGE - TAB TERMINAL

MODEL NO:SMA1551N1



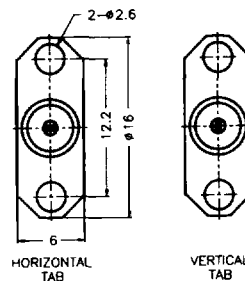
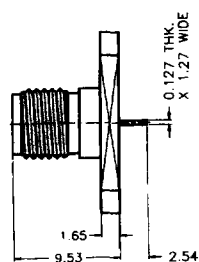
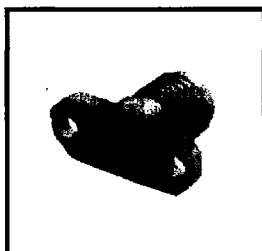
PANEL MOUNT JACK
RECEPTACLE -4 HOLE SQ.
FLANGE - TAB TERMINAL

MODEL NO:SMA6551M1



PANEL MOUNT JACK
RECEPTACLE -2 HOLE
FLANGE - TAB TERMINAL

MODEL NO:SMA6551N1

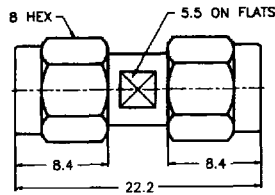
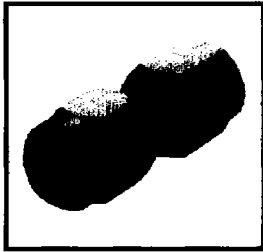


All dimensions are shown in millimeters

SMA Coaxial Connectors

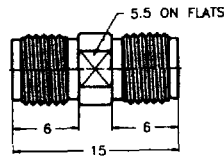
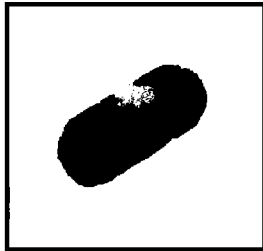
PLUG TO PLUG ADAPTOR

MODEL NO: SMA2071A1



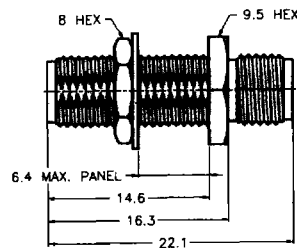
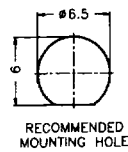
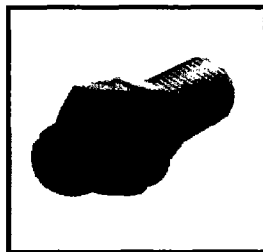
JACK TO JACK ADAPTOR

MODEL NO: SMA7071A2



JACK TO JACK ADAPTOR
-BULKHEAD FEEDTHROUGH

MODEL NO: SMA7471B1

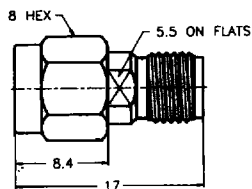
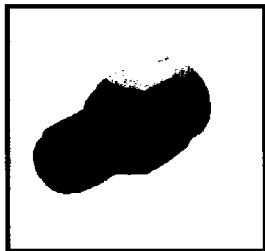


All dimensions are shown in millimeters

SMA Coaxial Connectors

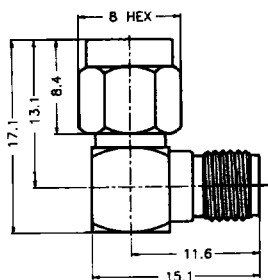
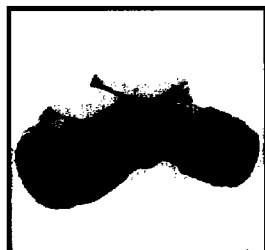
PLUG TO JACK ADAPTOR

MODEL NO:SMA5071A1



PLUG TO JACK ADAPTOR
-RIGHT ANGLE

MODEL NO:SMA5072A2



All dimensions are shown in millimeters