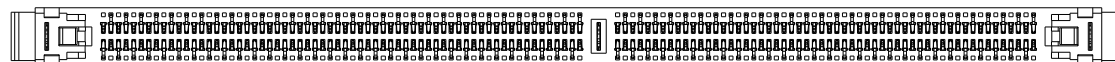
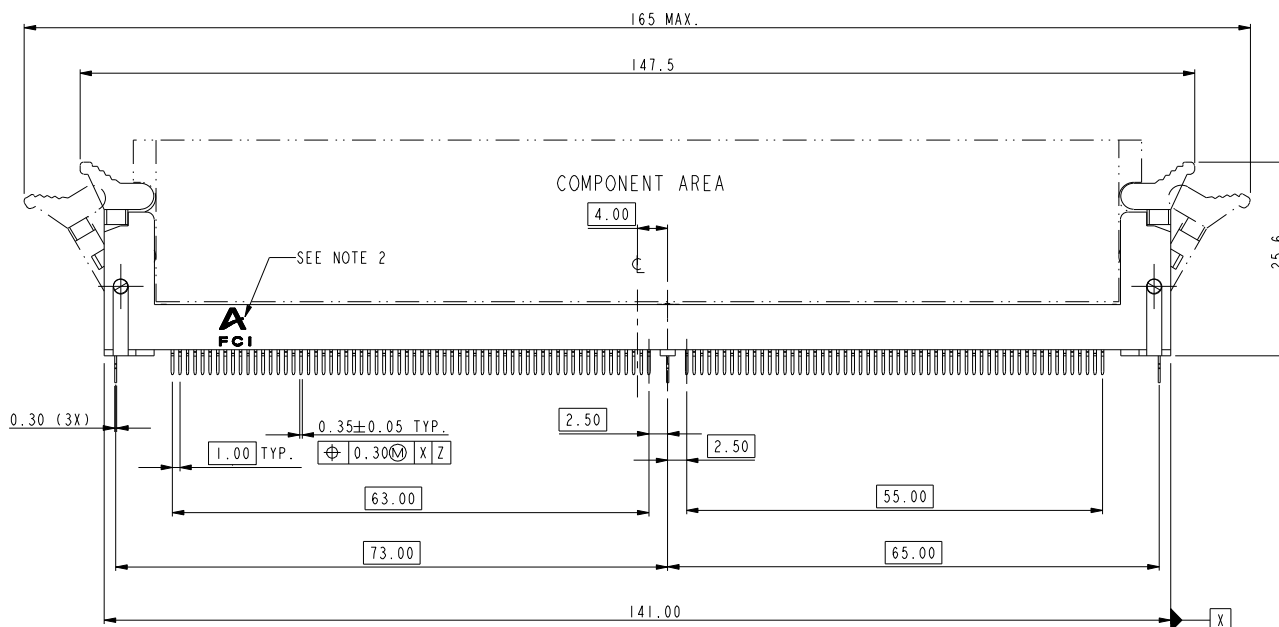
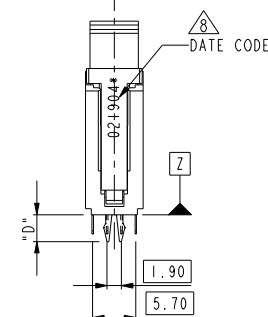
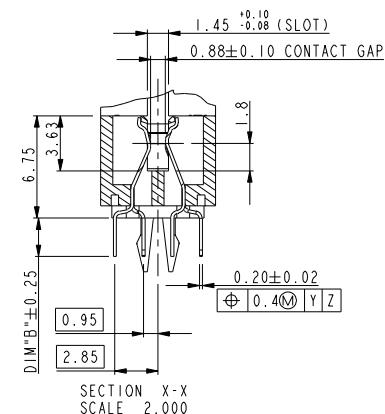
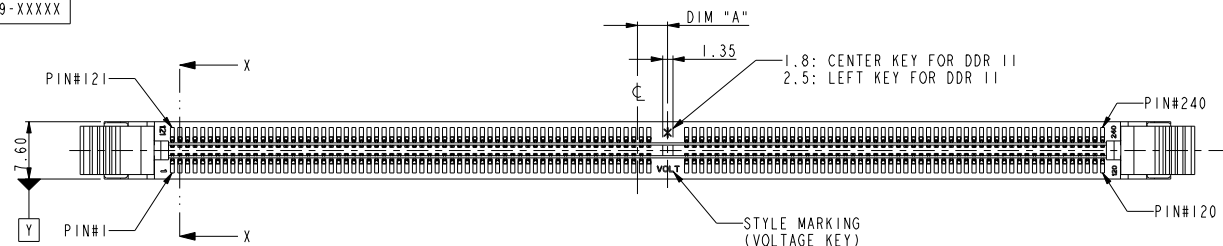






PRODUCT NO.
10005639-XXXXX



PART NO.	DIM "A"	DESCRIPTION
10005639-1****	4.00	1.8V
10005639-2****	3.00	2.5V
10005639-3****	5.00	X.XV

rev	ecn no	dr	date
V	DG06-0328	CS	09/08/06
W	DG07-0365	CS	06/09/07

www.fciconnect.com			surface 		tolerance std		projection 				
			TOLERANCES UNLESS OTHERWISE SPECIFIED								
Dr	CHARLIE S	03/21/02	ANGULAR	LINEAR	0.x ± .38		size	A4	Scale		
Eng	CHARLIE S	03/21/02			0.XX ± .25				0.500		
Chr	GARY HSIEH	03/21/02	0° ± 2°		0.XXX ± .13		ECN		T03-0057		
Appr	JOSEPH HSIA	03/21/02	Product family					Spec ref *			
			title DDR11 240P V/T METAL CLIP ASS'Y				dwg no	10005639		Rev	
			catalog							W	
			FCI DM: Row W				CUSTOMER		sheet 1 of 4		

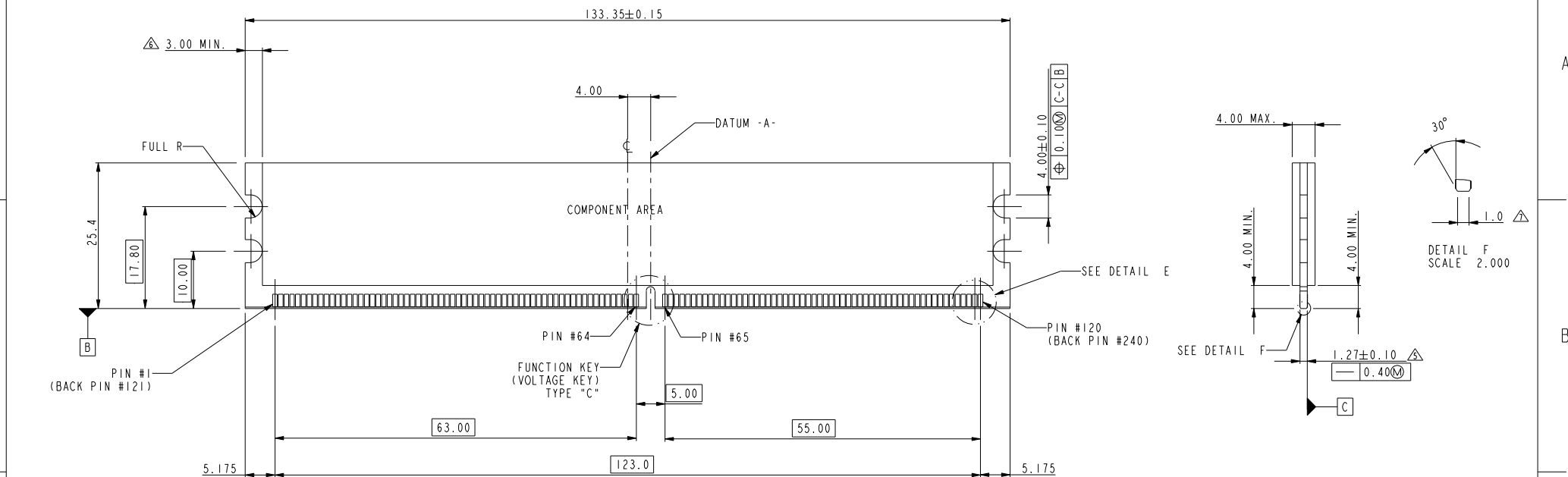
PDM: Rev:W

STATUS: Released

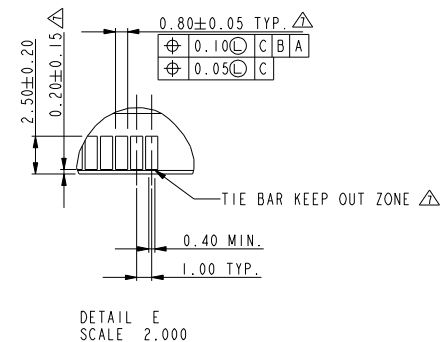
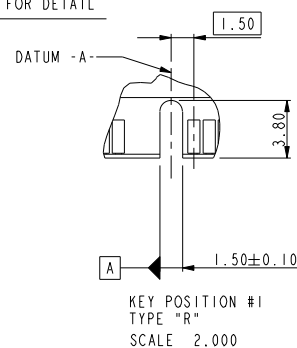
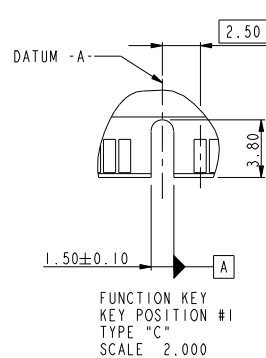
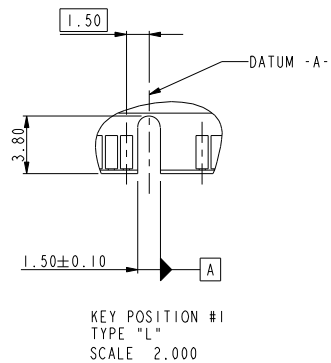
CUSTOMER

sheet 1 of 4

Printed: Jul 28, 2010



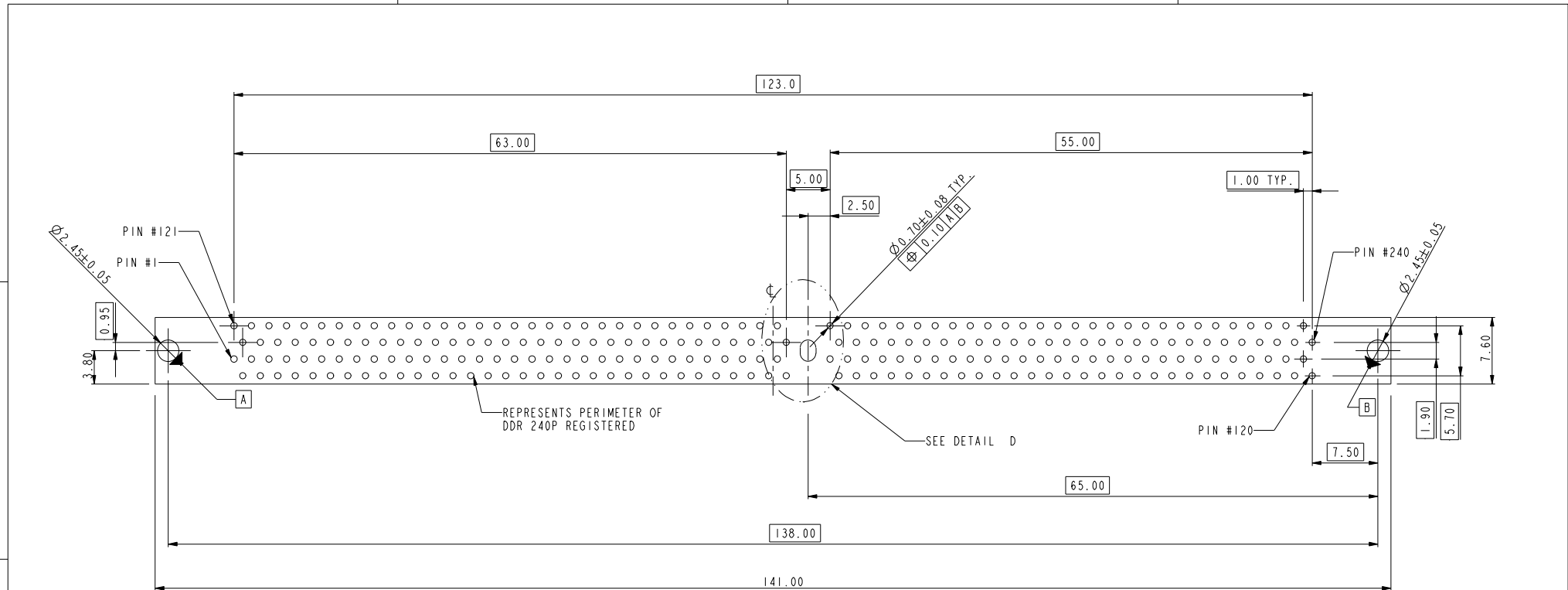
REFERENCE ONLY-SEE JEDEC SPEC MO-237 FOR DETAIL
SCALE 1.000



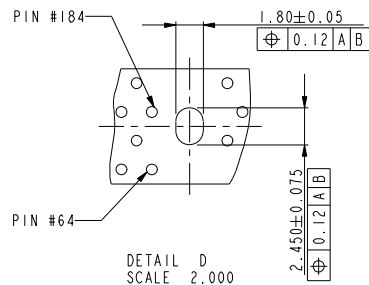
TYPE "R"	X.X VOLTAGE
TYPE "L"	2.5 VOLTAGE
TYPE "C"	1.8 VOLTAGE
SUB KEY POS #1	DESCRIPTION

REV E - 2006-03-28

	title	DDRII 240P V/T METAL CLIP ASS'Y	dwg no	10005639	Rev.
	catalog no				W
PDM: Rev:W		STATUS	Released	CUSTOMER	sheet 2 of 4
Printed: Jul 28, 2010					



RECOMMENDED CIRCUIT BOARD HOLE LAYOUT



tolerance unless otherwise specified	
linear	.X ± .38
	.XX ± .25
	.XXX ± .13
angles	0° ± 2°

	title DDRII 240P V/T METAL CLIP ASS'Y	dwg no 10005639	Rev. W
	catalog no PDM: Rev:W	STATUS Released	CUSTOMER Printed: Jul 28, 2010

NOTES:

1. MATERIAL:
HOUSING: HIGH PERFORMANCE RESINS, GLASS FILLED UL94V-0 RATED.
EJECTOR: HIGH PERFORMANCE RESINS, GLASS FILLED UL94V-0 RATED.
TERMINAL: PHOSPHOR BRONZE.
METAL CLIP: COPPER ALLOY.
2. FCI LOGO TO BE APPROXIMATELY LOCATED AS SHOWN ON PRINT.
3. PRODUCT SPECIFICATION: GS-12-251.
4. PACKAGING SPECIFICATION: GS-14-899.
5. CARD THICKNESS APPLIES ACROSS TABS AND INCLUDES PLATING AND/OR METALIZATION.
6. 3.00 mm MINIMUM APPLIES TO BOTH 4.00 mm WIDE NOTCH LENGTH AND COMPONENT KEEPOUT AREA.
7. LEADING EDGE OF CONTACT PADS SPECIFIED BY THE KEEP OUT ZONE SHALL BE FREE OF BURRS AND EXTERNAL TIE BARS.
FOR OPTIMUM PERFORMANCE, THE TIE BAR IS TO BE ON AN INTERNAL LAYER SO THAT THE REMNANT CANNOT CAUSE CONTACT DAMAGE.
8. THE DATE CODE IS SHOWN "MM-DD-YY*.". "*" MEANS PRODUCTION LINE CODE.
9. THIS PRODUCT MEETS EUROPEAN UNION DIRECTIVES AND OTHER COUNTRY REGULATIONS AS DESCRIBED IN GS-22-008.
10. THE HOUSING WILL WITH STAND EXPOSURE TO 260°C PEAK TEMPERATURE FOR 10 SECONDS IN A WAVE SOLDER APPLICATION.

10005639 - □ □ □ □ □

STYLE : MECHANICAL KEYING

1 : 1.8 VOLT. W/ CENTER KEY#1
2 : 2.5 VOLT. W/ LEFT KEY#1
3 : X.X VOLT. W/ RIGHT KEY#1

METAL CLIP

1 : WITH METAL CLIP + DIM "D"=3.05
2 : WITH METAL CLIP + DIM "D"=3.56
3 : WITH METAL CLIP + DIM "D"=3.43

TAIL LENGTH

CODE	DIM "B"
0	2.54
1	2.67
2	3.18
3	4.00

PLATING

CODE	CONTACT	SOLDERTAIL	UNDERPLATE
1	10u" (0.25um) MIN. GOLD	100u" (2.54um) MIN. TIN/LEAD	50u" (1.27um) MIN. NICKEL OVERALL
2	15u" (0.38um) MIN. GOLD		
3	30u" (0.76um) MIN. GOLD		
4	3u" (0.076um) MIN. GOLD		
6LF	10u" (0.25um) MIN. GOLD	100u" (2.54um) MIN. 100% TIN	50u" (1.27um) MIN. NICKEL OVERALL
7LF	15u" (0.38um) MIN. GOLD		
8LF	30u" (0.76um) MIN. GOLD		
9LF	3u" (0.076um) MIN. GOLD		

COLOR OF HOUSING AND EJECTOR

- 0 : BLACK HOUSING + IVORY EJECTOR
1 : BLUE HOUSING + IVORY EJECTOR
2 : BLACK HOUSING + BLACK EJECTOR
3 : PURPLE HOUSING + IVORY EJECTOR
4 : ORANGE HOUSING + IVORY EJECTOR
5 : GREEN HOUSING + IVORY EJECTOR
6 : RED HOUSING + IVORY EJECTOR
7 : IVORY HOUSING + IVORY EJECTOR
8 : YELLOW HOUSING + IVORY EJECTOR
9 : IVORY HOUSING + BLACK EJECTOR

tolerance unless otherwise specified	
linear	.X ± .38
	.XX ± .25
	.XXX ± .13
angles	0° ± 2°

	title	DDR11 240P V/T METAL CLIP ASS'Y	dwg no	10005639	Rev. W
	catalog no				
PDM: Rev:W		STATUS: Released	CUSTOMER	sheet 4 of 4	Printed: Jul 28 2010