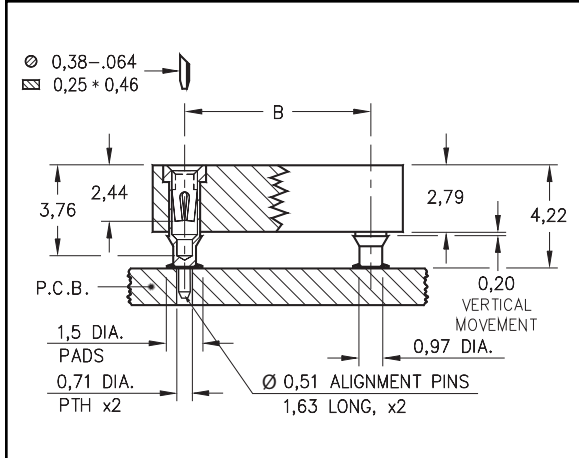




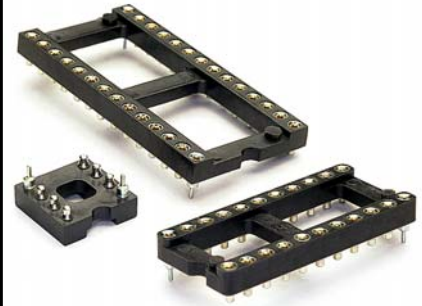
# DUAL-IN-LINE SOCKETS




## Surface Mount, Stub Tail, with Alignment Pins for Hand Placement



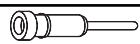

Series 113



- Unique floating contacts compensate for the effects of unevenly dispensed solder paste.
- Two corner alignment pins (power & ground positions) permit manual placement.
- High temperature insulator can withstand infra-red reflow and vapor phase soldering.
- Hi-Rel, 4-finger BeCu #30 contact is rated at 3 amps. See page 218 for details.
- Series 113 use MM #1334 and #1434 pins. See pages 133 & 142.



Total number of pins	ALIGNMENT PINS			Quantity per tube	Ordering Information	
	A	B	C			
10	12,6	5,08	7,6	41	113-XX-210-41-117000	 <p>For RoHS compliance select  plating code.</p>
4	5,0	7,62	10,1	100	113-XX-304-41-117000	
6	7,6	7,62	10,1	67	113-XX-306-41-117000	
8	10,1	7,62	10,1	50	113-XX-308-41-117000	
10	12,6	7,62	10,1	40	113-XX-310-41-117000	
14	17,7	7,62	10,1	28	113-XX-314-41-117000	
16	20,3	7,62	10,1	25	113-XX-316-41-117000	
18	22,8	7,62	10,1	22	113-XX-318-41-117000	
20	25,3	7,62	10,1	20	113-XX-320-41-117000	
22	27,8	7,62	10,1	18	113-XX-322-41-117000	
24	30,4	7,62	10,1	16	113-XX-324-41-117000	
28	35,5	7,62	10,1	14	113-XX-328-41-117000	
20	25,4	10,16	12,7	20	113-XX-420-41-117000	
22	27,8	10,16	12,7	18	113-XX-422-41-117000	
24	30,4	10,16	12,7	16	113-XX-424-41-117000	
28	35,5	10,16	12,7	14	113-XX-428-41-117000	
32	40,6	10,16	12,7	12	113-XX-432-41-117000	
24	30,4	15,24	17,7	16	113-XX-624-41-117000	
28	35,5	15,24	17,7	14	113-XX-628-41-117000	
32	40,6	15,24	17,7	12	113-XX-632-41-117000	
36	45,7	15,24	17,7	11	113-XX-636-41-117000	
40	50,8	15,24	17,7	10	113-XX-640-41-117000	
42	53,3	15,24	17,7	9	113-XX-642-41-117000	
48	60,9	15,24	17,7	8	113-XX-648-41-117000	
50	63,5	15,24	17,7	8	113-XX-650-41-117000	
52	66,0	15,24	17,7	7	113-XX-652-41-117000	
50	63,5	22,86	25,3	8	113-XX-950-41-117000	
52	66,0	22,86	25,3	7	113-XX-952-41-117000	
64	81,2	22,86	25,3	6	113-XX-964-41-117000	

SPECIFY PLATING CODE XX=	13 		93		43 	
Sleeve (Pin) 	0,25µm Au		5,08µm Sn/Pb		5,08µm Sn	
Contact (Clip) 	0,76µm Au		0,76µm Au		0,76µm Au	