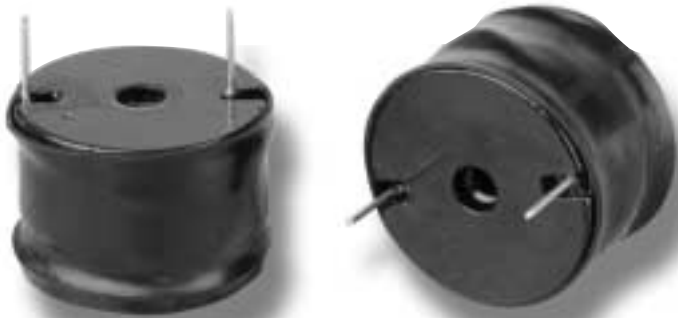


# RL-1256 RADIAL LEADED POWER LINE CHOKES



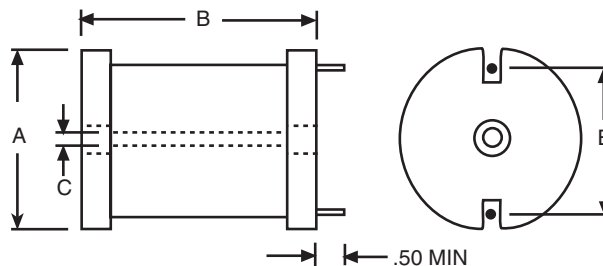
The RL-1256 Series of Power Line Chokes is available in 367 standard values covering a wide range of inductance and current. The use of high saturation flux density material make these coils ideal for use in switching regulated power supply applications and wherever high current choke values in a small physical size are needed.

## Typical Applications:

- Switching Regulators
- Power Amplifiers
- Power Supplies
- SCR and Triac Controls
- Speaker Crossover Networks
- RFI Suppression
- Filters

MAXIMUM DIMENSIONS:				
Part No.	Type	A	B	C
RL-1256-1		.66	.84	Clearance Hole
RL-1256-2		.83	.84	For 4/40
RL-1256-3		1.10	.84	Screw
RL-1256-4		1.60	1.10	Clearance Hole
RL-1256-5		1.60	1.45	For 8/32
RL-1256-6		2.00	1.50	Screw
RL-1256-7		2.40	1.50	With Washer
RL-1256-8		2.40	2.50	

ALL DIMENSIONS IN INCHES



NOTE: See specification tables for "E" dim.



## RENCO ELECTRONICS, INC.

595 International Place, Rockledge, FL 32955-4200 USA

(321) 637-1000 • Toll Free Engineering Hot line 800-645-5828

Fax: (321) 637-1600 Web Site: [www.rencousa.com](http://www.rencousa.com) E-mail: [sales@rencousa.com](mailto:sales@rencousa.com)

<b>RL-1256-1</b>						
Renco Part No.	Inductance ODC (μH)	Max. DCR (Ohms)	Saturation Current (DC Amps)	Rated Current (Amps)	Dimension "E" Approx. (Inches)	Pin Dimension Approx. (Inches)
RL-1256-1-1.0	1.0	.003	87.0	9.0	.550	.054
RL-1256-1-1.2	1.2	.003	68.0	9.0	.550	.054
RL-1256-1-1.5	1.5	.004	56.0	9.0	.550	.054
RL-1256-1-1.8	1.8	.004	56.0	9.0	.550	.054
RL-1256-1-2.2	2.2	.005	47.0	9.0	.550	.054
RL-1256-1-2.7	2.7	.005	47.0	9.0	.550	.054
RL-1256-1-3.3	3.3	.005	40.0	9.0	.550	.054
RL-1256-1-3.9	3.9	.006	36.0	9.0	.550	.054
RL-1256-1-4.7	4.7	.007	32.0	9.0	.550	.054
RL-1256-1-5.6	5.6	.007	29.0	9.0	.550	.054
RL-1256-1-6.8	6.8	.008	26.0	9.0	.550	.054
RL-1256-1-8.2	8.2	.009	24.5	9.0	.550	.054
RL-1256-1-10	10.0	.010	21.2	9.0	.550	.054
RL-1256-1-12	12.0	.011	19.0	9.0	.550	.054
RL-1256-1-15	15.0	.015	17.5	7.2	.500	.048
RL-1256-1-18	18.0	.016	16.5	7.2	.500	.048
RL-1256-1-22	22.0	.025	15.8	5.5	.500	.043
RL-1256-1-27	27.0	.030	14.4	4.5	.500	.039
RL-1256-1-33	33.0	.040	13.2	4.0	.406	.035
RL-1256-1-39	39.0	.046	11.8	4.0	.469	.035
RL-1256-1-47	47.0	.062	11.0	2.8	.469	.031
RL-1256-1-56	56.0	.069	10.0	2.8	.485	.031
RL-1256-1-68	68.0	.077	8.9	2.8	.500	.031
RL-1256-1-82	82.0	.083	8.2	2.8	.500	.031
RL-1256-1-100	100.0	.095	7.5	2.8	.500	.031
RL-1256-1-120	120.0	.127	5.8	2.0	.480	.028
RL-1256-1-150	150.0	.181	5.6	1.6	.480	.025
RL-1256-1-180	180.0	.217	5.1	1.6	.480	.025
RL-1256-1-220	220.0	.240	4.3	1.6	.480	.025
RL-1256-1-270	270.0	.300	4.1	1.6	.480	.022
RL-1256-1-330	330.0	.336	3.8	1.3	.480	.022
RL-1256-1-390	390.0	.460	3.3	1.0	.480	.022
RL-1256-1-470	470.0	.636	3.2	0.8	.450	.020
RL-1256-1-560	560.0	.696	2.9	0.8	.450	.018

**NOTES:**

1. Saturation current lowers inductance 5%.
2. Inductance  $\pm 10\%$  measured at 1KHz, values below  $10\mu\text{H} \pm 20\%$ .
3. Leads for PC mounting tinned to within  $1/16"$  of body.
4. Non-listed values available on request.
5. Coils finished with sleeving UL-VW-1 rated.
6. Encapsulated to MIL-T-27D available, see Renco RL-1324 Series.
7. Center hole for mechanical mounting.
8. 500 Volts DC hipot for 1 minute (winding to I.D. of core).
9. RDC measured @ 20°C.
10. Spacer available at additional cost to facilitate PC board washing.



**RENCO ELECTRONICS, INC.**

595 International Place, Rockledge, FL 32955-4200 USA

(321) 637-1000 • Toll Free Engineering Hot line 800-645-5828

Fax: (321) 637-1600 Web Site: [www.rencousa.com](http://www.rencousa.com) E-mail: [sales@rencousa.com](mailto:sales@rencousa.com)

<b>RL-1256-2</b>						
Renco Part No.	Inductance ODC (μH)	Max. DCR (Ohms)	Saturation Current (DC Amps)	Rated Current (Amps)	Dimension "E" Approx. (Inches)	Pin Dimension Approx. (Inches)
RL-1256-2-1.0	1.0	.003	108.0	11.4	.620	.060
RL-1256-2-1.2	1.2	.003	108.0	11.4	.620	.060
RL-1256-2-1.5	1.5	.003	83.0	11.4	.620	.060
RL-1256-2-1.8	1.8	.003	68.0	11.4	.620	.060
RL-1256-2-2.2	2.2	.004	68.0	11.4	.620	.060
RL-1256-2-2.7	2.7	.005	58.0	11.4	.620	.060
RL-1256-2-3.3	3.3	.005	58.0	11.4	.620	.060
RL-1256-2-3.9	3.9	.005	50.0	11.4	.620	.060
RL-1256-2-4.7	4.7	.005	50.0	11.4	.620	.060
RL-1256-2-5.6	5.6	.006	44.0	11.4	.620	.060
RL-1256-2-6.8	6.8	.007	39.0	11.4	.620	.060
RL-1256-2-8.2	8.2	.007	36.0	11.4	.620	.060
RL-1256-2-10	10.0	.009	30.0	11.4	.620	.060
RL-1256-2-12	12.0	.009	27.0	11.4	.620	.060
RL-1256-2-15	15.0	.013	25.0	9.0	.625	.054
RL-1256-2-18	18.0	.018	22.0	7.2	.630	.048
RL-1256-2-22	22.0	.019	21.0	7.2	.630	.048
RL-1256-2-27	27.0	.026	20.5	5.5	.546	.043
RL-1256-2-33	33.0	.029	18.6	5.5	.546	.043
RL-1256-2-39	39.0	.030	17.0	5.5	.594	.043
RL-1256-2-47	47.0	.035	15.1	5.5	.625	.041
RL-1256-2-56	56.0	.039	13.6	5.5	.625	.041
RL-1256-2-68	68.0	.053	12.7	4.8	.656	.039
RL-1256-2-82	82.0	.060	11.3	4.8	.656	.039
RL-1256-2-100	100.0	.080	10.4	4.0	.593	.033
RL-1256-2-120	120.0	.090	9.4	4.0	.593	.033
RL-1256-2-150	150.0	.098	8.6	4.0	.593	.033
RL-1256-2-180	180.0	.110	7.8	4.0	.671	.033
RL-1256-2-220	220.0	.150	7.0	2.8	.593	.031
RL-1256-2-270	270.0	.213	6.3	2.0	.562	.030
RL-1256-2-330	330.0	.305	5.2	1.6	.590	.025
RL-1256-2-390	390.0	.320	4.9	1.6	.590	.025
RL-1256-2-470	470.0	.355	4.5	1.6	.590	.025
RL-1256-2-560	560.0	.388	4.1	1.6	.590	.025
RL-1256-2-680	680.0	.430	3.7	1.6	.590	.025
RL-1256-2-820	820.0	.590	3.4	1.3	.590	.022
RL-1256-2-1000	1000.0	.818	3.1	1.0	.590	.020
RL-1256-2-1200	1200.0	1.14	2.7	0.8	.590	.020
RL-1256-2-1500	1500.0	1.26	2.4	0.8	.590	.020
RL-1256-2-1800	1800.0	1.39	2.2	0.8	.590	.020
RL-1256-2-2200	2200.0	1.54	2.0	0.8	.590	.020



## RENCO ELECTRONICS, INC.

595 International Place, Rockledge, FL 32955-4200 USA

(321) 637-1000 • Toll Free Engineering Hot line 800-645-5828

Fax: (321) 637-1600 Web Site: [www.rencousa.com](http://www.rencousa.com) E-mail: [sales@rencousa.com](mailto:sales@rencousa.com)

<b>RL-1256-3</b>						
Renco Part No.	Inductance ODC (μH)	Max. DCR (Ohms)	Saturation Current (DC Amps)	Rated Current (Amps)	Dimension "E" Approx. (Inches)	Pin Dimension Approx. (Inches)
RL-1256-3-1.0	1.0	.003	116.0	21.0	.800	.084
RL-1256-3-1.2	1.2	.003	116.0	21.0	.800	.084
RL-1256-3-1.5	1.5	.003	116.0	21.0	.800	.084
RL-1256-3-1.8	1.8	.003	90.0	21.0	.800	.084
RL-1256-3-2.2	2.2	.003	90.0	21.0	.800	.084
RL-1256-3-2.7	2.7	.003	74.0	21.0	.800	.084
RL-1256-3-3.3	3.3	.003	74.0	21.0	.800	.084
RL-1256-3-3.9	3.9	.003	62.0	21.0	.800	.084
RL-1256-3-4.7	4.7	.003	54.0	21.0	.800	.084
RL-1256-3-5.6	5.6	.003	54.0	21.0	.800	.084
RL-1256-3-6.8	6.8	.004	47.0	21.0	.800	.084
RL-1256-3-8.2	8.2	.004	42.0	21.0	.800	.084
RL-1256-3-10	10.0	.006	38.0	17.0	.700	.075
RL-1256-3-12	12.0	.008	35.0	13.5	.690	.068
RL-1256-3-15	15.0	.009	32.0	13.5	.690	.068
RL-1256-3-18	18.0	.010	29.0	13.5	.690	.068
RL-1256-3-22	22.0	.011	25.0	13.5	.790	.068
RL-1256-3-27	27.0	.012	23.0	13.5	.790	.068
RL-1256-3-33	33.0	.017	20.0	13.5	.790	.060
RL-1256-3-39	39.0	.022	19.1	11.4	.790	.054
RL-1256-3-47	47.0	.024	19.0	9.0	.750	.054
RL-1256-3-56	56.0	.026	17.5	9.0	.750	.054
RL-1256-3-68	68.0	.029	15.6	9.0	.750	.054
RL-1256-3-82	82.0	.032	14.0	9.0	.750	.054
RL-1256-3-100	100.0	.034	13.2	9.0	.781	.054
RL-1256-3-120	120.0	.046	12.1	7.2	.750	.051
RL-1256-3-150	150.0	.064	10.8	5.5	.781	.043
RL-1256-3-180	180.0	.072	9.7	5.5	.781	.043
RL-1256-3-220	220.0	.080	8.7	5.5	.781	.041
RL-1256-3-270	270.0	.110	7.9	4.5	.750	.039
RL-1256-3-330	330.0	.122	7.1	4.5	.812	.039
RL-1256-3-390	390.0	.169	6.7	4.0	.750	.035
RL-1256-3-470	470.0	.187	6.0	4.0	.750	.035
RL-1256-3-560	560.0	.205	5.5	4.0	.750	.035
RL-1256-3-680	680.0	.256	5.0	2.8	.718	.031
RL-1256-3-820	820.0	.288	4.5	2.8	.843	.031
RL-1256-3-1000	1000.0	.426	4.1	2.0	.750	.028
RL-1256-3-1200	1200.0	.462	3.7	2.0	.750	.028
RL-1256-3-1500	1500.0	.518	3.4	2.0	.750	.028
RL-1256-3-1800	1800.0	.705	2.8	1.6	.770	.022
RL-1256-3-2200	2200.0	1.02	2.5	1.3	.770	.022
RL-1256-3-2700	2700.0	1.14	2.3	1.3	.770	.022
RL-1256-3-3300	3300.0	1.27	2.0	1.3	.750	.022
RL-1256-3-3900	3900.0	1.67	1.8	1.0	.750	.020
RL-1256-3-4700	4700.0	1.86	1.7	1.0	.750	.020



## RENCO ELECTRONICS, INC.

✉ 595 International Place, Rockledge, FL 32955-4200 USA

☎ (321) 637-1000 • Toll Free Engineering Hot line 800-645-5828

📠 Fax: (321) 637-1600 🌐 Web Site: [www.rencousa.com](http://www.rencousa.com) ✉ E-mail: [sales@rencousa.com](mailto:sales@rencousa.com)

<b>RL-1256-4</b>						
Renco Part No.	Inductance ODC (μH)	Max. DCR (Ohms)	Saturation Current (DC Amps)	Rated Current (Amps)	Dimension "E" Approx. (Inches)	Pin Dimension Approx. (Inches)
RL-1256-4-1.8	1.8	.002	150.0	27.0	1.11	.094
RL-1256-4-2.2	2.2	.002	150.0	27.0	1.11	.094
RL-1256-4-2.7	2.7	.003	115.0	27.0	1.11	.094
RL-1256-4-3.3	3.3	.003	115.0	27.0	1.11	.094
RL-1256-4-3.9	3.9	.003	95.0	27.0	1.11	.094
RL-1256-4-4.7	4.7	.003	95.0	27.0	1.11	.094
RL-1256-4-5.6	5.6	.004	79.0	27.0	1.11	.094
RL-1256-4-6.8	6.8	.004	79.0	27.0	1.11	.094
RL-1256-4-8.2	8.2	.004	69.0	27.0	1.11	.094
RL-1256-4-10	10.0	.005	61.0	27.0	1.11	.094
RL-1256-4-12	12.0	.005	55.0	27.0	1.11	.094
RL-1256-4-15	15.0	.006	49.0	27.0	1.11	.094
RL-1256-4-18	18.0	.008	41.0	27.0	1.11	.094
RL-1256-4-22	22.0	.009	38.0	21.0	1.11	.084
RL-1256-4-27	27.0	.010	36.0	21.0	1.15	.084
RL-1256-4-33	33.0	.011	31.0	21.0	1.15	.084
RL-1256-4-39	39.0	.012	28.0	21.0	1.15	.084
RL-1256-4-47	47.0	.018	27.0	14.4	1.140	.068
RL-1256-4-56	56.0	.019	26.1	14.4	1.140	.068
RL-1256-4-68	68.0	.021	24.4	14.4	1.140	.068
RL-1256-4-82	82.0	.023	22.4	14.4	1.140	.068
RL-1256-4-100	100.0	.025	20.0	14.4	1.140	.068
RL-1256-4-120	120.0	.028	18.0	14.4	1.187	.068
RL-1256-4-150	150.0	.040	16.4	11.4	1.125	.060
RL-1256-4-180	180.0	.045	14.6	11.4	1.125	.060
RL-1256-4-220	220.0	.050	13.2	11.4	1.125	.060
RL-1256-4-270	270.0	.056	11.8	11.4	1.156	.060
RL-1256-4-330	330.0	.074	11.4	11.4	1.125	.054
RL-1256-4-390	390.0	.082	10.1	9.0	1.187	.054
RL-1256-4-470	470.0	.114	9.2	7.2	1.125	.048
RL-1256-4-560	560.0	.125	8.3	7.2	1.125	.048
RL-1256-4-680	680.0	.139	7.6	7.2	1.125	.048
RL-1256-4-820	820.0	.154	6.8	7.2	1.187	.048
RL-1256-4-1000	1000.0	.216	6.2	5.5	1.062	.043
RL-1256-4-1200	1200.0	.232	5.7	5.5	1.156	.043
RL-1256-4-1500	1500.0	.324	5.1	4.5	1.156	.039
RL-1256-4-1800	1800.0	.360	4.6	4.5	1.156	.039
RL-1256-4-2200	2200.0	.494	4.2	4.0	1.062	.033
RL-1256-4-2700	2700.0	.555	3.8	4.0	1.062	.033
RL-1256-4-3300	3300.0	.773	3.4	2.8	1.062	.031
RL-1256-4-3900	3900.0	.845	3.1	2.8	1.125	.031
RL-1256-4-4700	4700.0	1.14	2.9	2.0	1.11	.028
RL-1256-4-5600	5600.0	1.60	2.5	2.0	1.11	.028
RL-1256-4-6800	6800.0	1.76	2.3	1.6	1.11	.025
RL-1256-4-8200	8200.0	1.95	2.0	1.6	1.16	.025
RL-1256-4-10000	10000.0	2.76	1.8	1.3	1.16	.022
RL-1256-4-12000	12000.0	3.04	1.7	1.3	1.16	.022
RL-1256-4-15000	15000.0	3.39	1.5	1.3	1.16	.022



# RENCO ELECTRONICS, INC.

595 International Place, Rockledge, FL 32955-4200 USA

(321) 637-1000 • Toll Free Engineering Hot line 800-645-5828

Fax: (321) 637-1600 Web Site: [www.rencousa.com](http://www.rencousa.com) E-mail: [sales@rencousa.com](mailto:sales@rencousa.com)

<b>RL-1256-5</b>						
Renco Part No.	Inductance ODC (μH)	Max. DCR (Ohms)	Saturation Current (DC Amps)	Rated Current (Amps)	Dimension "E" Approx. (Inches)	Pin Dimension Approx. (Inches)
RL-1256-5-1.8	1.8	.002	155.0	35.0	1.11	.105
RL-1256-5-2.2	2.2	.002	155.0	35.0	1.11	.105
RL-1256-5-2.7	2.7	.002	125.0	35.0	1.11	.105
RL-1256-5-3.3	3.3	.002	125.0	35.0	1.11	.105
RL-1256-5-3.9	3.9	.003	102.0	35.0	1.11	.105
RL-1256-5-4.7	4.7	.003	87.0	35.0	1.11	.105
RL-1256-5-5.6	5.6	.003	87.0	35.0	1.11	.105
RL-1256-5-6.8	6.8	.003	87.0	35.0	1.11	.105
RL-1256-5-8.2	8.2	.003	76.0	35.0	1.11	.105
RL-1256-5-10	10.0	.004	67.0	35.0	1.11	.105
RL-1256-5-12	12.0	.004	60.0	35.0	1.16	.105
RL-1256-5-15	15.0	.005	49.0	35.0	1.16	.105
RL-1256-5-18	18.0	.007	45.0	27.0	1.16	.094
RL-1256-5-22	22.0	.007	42.0	27.0	1.16	.094
RL-1256-5-27	27.0	.008	35.0	27.0	1.16	.094
RL-1256-5-33	33.0	.009	34.0	27.0	1.16	.094
RL-1256-5-39	39.0	.010	30.0	27.0	1.16	.094
RL-1256-5-47	47.0	.011	28.0	27.0	1.16	.094
RL-1256-5-56	56.0	.013	26.0	21.0	1.16	.084
RL-1256-5-68	68.0	.015	23.0	21.0	1.25	.084
RL-1256-5-82	82.0	.017	20.0	21.0	1.28	.084
RL-1256-5-100	100.0	.018	19.0	21.0	1.25	.084
RL-1256-5-120	120.0	.022	18.0	17.0	1.16	.075
RL-1256-5-150	150.0	.025	16.0	17.0	1.16	.075
RL-1256-5-180	180.0	.035	14.0	13.5	1.10	.068
RL-1256-5-220	220.0	.040	13.0	13.5	1.10	.068
RL-1256-5-270	270.0	.044	11.0	13.5	1.10	.068
RL-1256-5-330	330.0	.049	10.0	13.5	1.11	.068
RL-1256-5-390	390.0	.070	9.7	11.4	1.15	.060
RL-1256-5-470	470.0	.078	8.8	11.4	1.07	.060
RL-1256-5-560	560.0	.105	8.1	9.0	1.07	.054
RL-1256-5-680	680.0	.115	7.4	9.0	1.07	.054
RL-1256-5-820	820.0	.127	6.7	9.0	1.12	.054
RL-1256-5-1000	1000.0	.176	6.1	7.2	1.12	.048
RL-1256-5-1200	1200.0	.195	5.5	7.2	1.12	.048
RL-1256-5-1500	1500.0	.274	5.0	5.5	1.12	.043
RL-1256-5-1800	1800.0	.302	4.5	5.5	1.13	.043
RL-1256-5-2200	2200.0	.338	4.1	5.5	1.16	.043
RL-1256-5-2700	2700.0	.459	3.7	4.5	1.02	.039
RL-1256-5-3300	3300.0	.642	3.4	4.0	1.02	.035
RL-1256-5-3900	3900.0	.699	3.0	4.0	1.14	.035
RL-1256-5-4700	4700.0	.775	2.8	4.0	1.14	.035
RL-1256-5-5600	5600.0	.843	2.6	4.0	1.14	.035
RL-1256-5-6800	6800.0	1.15	2.3	2.8	1.06	.031
RL-1256-5-8200	8200.0	1.26	2.1	2.8	1.16	.031
RL-1256-5-10000	10000.0	1.74	1.9	2.0	1.13	.028
RL-1256-5-12000	12000.0	1.92	1.7	2.0	1.13	.028
RL-1256-5-15000	15000.0	2.17	1.5	2.0	1.13	.028



## RENCO ELECTRONICS, INC.

✉ 595 International Place, Rockledge, FL 32955-4200 USA

☎ (321) 637-1000 • Toll Free Engineering Hot line 800-645-5828

📠 Fax: (321) 637-1600 🖥 Web Site: [www.rencousa.com](http://www.rencousa.com) ✉ E-mail: [sales@rencousa.com](mailto:sales@rencousa.com)

<b>RL-1256-6</b>						
Renco Part No.	Inductance ODC (μH)	Max. DCR (Ohms)	Saturation Current (DC Amps)	Rated Current (Amps)	Dimension "E" Approx. (Inches)	Pin Dimension Approx. (Inches)
RL-1256-6-4.7	4.7	.002	149.9	35.0	1.40	.105
RL-1256-6-5.6	5.6	.002	122.7	35.0	1.40	.105
RL-1256-6-6.8	6.8	.003	103.8	35.0	1.40	.105
RL-1256-6-8.2	8.2	.003	90.0	35.0	1.40	.105
RL-1256-6-10	10.0	.003	79.4	35.0	1.48	.105
RL-1256-6-12	12.0	.004	71.0	35.0	1.48	.105
RL-1256-6-15	15.0	.004	64.3	35.0	1.48	.105
RL-1256-6-18	18.0	.005	58.7	35.0	1.48	.105
RL-1256-6-22	22.0	.005	54.0	35.0	1.48	.105
RL-1256-6-27	27.0	.006	50.0	35.0	1.48	.105
RL-1256-6-33	33.0	.006	46.5	35.0	1.48	.105
RL-1256-6-39	39.0	.006	43.5	35.0	1.48	.105
RL-1256-6-47	47.0	.008	40.9	35.0	1.48	.105
RL-1256-6-56	56.0	.009	36.5	35.0	1.48	.105
RL-1256-6-68	68.0	.009	32.9	35.0	1.48	.105
RL-1256-6-82	82.0	.010	30.0	35.0	1.48	.105
RL-1256-6-100	100.0	.014	26.5	27.0	1.53	.094
RL-1256-6-120	120.0	.015	24.5	27.0	1.53	.094
RL-1256-6-150	150.0	.023	21.4	21.0	1.49	.084
RL-1256-6-180	180.0	.025	19.5	21.0	1.49	.084
RL-1256-6-220	220.0	.028	18.0	21.0	1.49	.084
RL-1256-6-270	270.0	.030	16.2	21.0	1.49	.084
RL-1256-6-330	330.0	.040	14.8	17.0	1.31	.075
RL-1256-6-390	390.0	.055	13.6	13.5	1.31	.068
RL-1256-6-470	470.0	.061	12.3	13.5	1.31	.068
RL-1256-6-560	560.0	.068	11.3	13.5	1.40	.068
RL-1256-6-680	680.0	.094	10.3	11.4	1.42	.060
RL-1256-6-820	820.0	.104	9.4	11.4	1.42	.060
RL-1256-6-1000	1000.0	.143	8.5	9.0	1.36	.054
RL-1256-6-1200	1200.0	.156	7.7	9.0	1.36	.054
RL-1256-6-1500	1500.0	.219	6.8	7.2	1.31	.048
RL-1256-6-1800	1800.0	.241	6.3	7.2	1.31	.048
RL-1256-6-2200	2200.0	.270	5.7	7.2	1.40	.048
RL-1256-6-2700	2700.0	.364	5.1	5.5	1.36	.043
RL-1256-6-3300	3300.0	.498	4.6	4.5	1.24	.039
RL-1256-6-3900	3900.0	.548	4.2	4.5	1.32	.039
RL-1256-6-4700	4700.0	.608	3.9	4.5	1.32	.039
RL-1256-6-5600	5600.0	.671	3.5	4.5	1.36	.039
RL-1256-6-6800	6800.0	.750	3.2	4.5	1.40	.039
RL-1256-6-8200	8200.0	1.03	2.9	4.0	1.45	.035
RL-1256-6-10000	10000.0	1.16	2.6	4.0	1.45	.035
RL-1256-6-12000	12000.0	1.54	2.4	2.8	1.40	.031
RL-1256-6-15000	15000.0	1.75	2.2	2.8	1.40	.031
RL-1256-6-18000	18000.0	1.94	2.0	2.8	1.45	.028
RL-1256-6-22000	22000.0	2.74	1.8	2.0	1.37	.028
RL-1256-6-27000	27000.0	3.71	1.6	1.7	1.37	.025
RL-1256-6-33000	33000.0	4.16	1.5	1.7	1.37	.025
RL-1256-6-39000	39000.0	5.56	1.4	1.4	1.35	.025
RL-1256-6-47000	47000.0	6.19	1.2	1.4	1.35	.022



## RENCO ELECTRONICS, INC.

595 International Place, Rockledge, FL 32955-4200 USA

(321) 637-1000 • Toll Free Engineering Hot line 800-645-5828

Fax: (321) 637-1600 Web Site: [www.rencousa.com](http://www.rencousa.com) E-mail: [sales@rencousa.com](mailto:sales@rencousa.com)

<b>RL-1256-7</b>						
Renco Part No.	Inductance ODC (μH)	Max. DCR (Ohms)	Saturation Current (DC Amps)	REVISED Rated Current (Amps)	Dimension "E" Approx. (Inches)	Pin Dimension Approx. (Inches)
RL-1256-7-5.6	5.6	.0018	200.0	45	1.60	.120
RL-1256-7-6.8	6.8	.0021	163.0	45	1.60	.120
RL-1256-7-8.2	8.2	.0022	163.0	45	1.60	.120
RL-1256-7-10	10.0	.0024	138.0	45	1.60	.120
RL-1256-7-12	12.0	.0025	120.0	45	1.60	.120
RL-1256-7-15	15.0	.0028	105.0	42	1.70	.120
RL-1256-7-18	18.0	.0032	94.0	40	1.70	.120
RL-1256-7-22	22.0	.0036	85.0	38	1.70	.120
RL-1256-7-27	27.0	.0042	78.0	38	1.70	.120
RL-1256-7-33	33.0	.0045	72.0	37	1.70	.120
RL-1256-7-39	39.0	.0048	66.0	36	1.80	.120
RL-1256-7-47	47.0	.0057	58.0	35	1.80	.120
RL-1256-7-56	56.0	.0069	54.0	35	1.80	.120
RL-1256-7-68	68.0	.0078	48.0	35	1.80	.120
RL-1256-7-82	82.0	.0093	43.0	35	1.80	.120
RL-1256-7-100	100.0	.0103	40.0	27	1.80	.120
RL-1256-7-120	120.0	.0108	36.0	27	1.80	.120
RL-1256-7-150	150.0	.0120	32.0	25	1.80	.120
RL-1256-7-180	180.0	.0156	31.0	22	1.80	.105
RL-1256-7-220	220.0	.0168	28.0	22	1.80	.105
RL-1256-7-270	270.0	.0228	24.0	21.0	1.80	.094
RL-1256-7-330	330.0	.0300	23.0	17.0	1.80	.084
RL-1256-7-390	390.0	.0432	21.0	13.5	1.70	.075
RL-1256-7-470	470.0	.0456	19.7	13.5	1.70	.075
RL-1256-7-560	560.0	.0480	17.4	13.5	1.75	.075
RL-1256-7-680	680.0	.0516	15.9	12.0	1.80	.075
RL-1256-7-820	820.0	.0648	14.0	11.5	1.80	.075
RL-1256-7-1000	1000.0	.0936	12.7	10.0	1.75	.068
RL-1256-7-1200	1200.0	.1020	11.9	9.5	1.78	.068
RL-1256-7-1500	1500.0	.1176	10.9	8.0	1.80	.068
RL-1256-7-1800	1800.0	.1536	10.1	7.5	1.70	.060
RL-1256-7-2200	2200.0	.2160	8.9	7.2	1.70	.054
RL-1256-7-2700	2700.0	.2424	8.0	6.0	1.75	.054
RL-1256-7-3300	3300.0	.2640	7.1	5.5	1.80	.054
RL-1256-7-3900	3900.0	.3480	6.8	5.2	1.75	.048
RL-1256-7-4700	4700.0	.3924	6.1	5.0	1.78	.048
RL-1256-7-5600	5600.0	.4320	5.6	4.7	1.80	.048
RL-1256-7-6800	6800.0	.5940	5.0	4.5	1.70	.043
RL-1256-7-8200	8200.0	.6600	4.6	4.0	1.75	.043
RL-1256-7-10000	10000.0	.7560	4.0	4.0	1.80	.043
RL-1256-7-12000	12000.0	.9840	3.7	3.5	1.80	.039
RL-1256-7-15000	15000.0	1.416	3.0	2.8	1.75	.035
RL-1256-7-18000	18000.0	1.524	2.8	2.8	1.78	.035
RL-1256-7-22000	22000.0	1.800	2.7	2.3	1.80	.035
RL-1256-7-27000	27000.0	2.376	2.5	2.0	1.75	.031
RL-1256-7-33000	33000.0	2.640	2.2	1.9	1.80	.031
RL-1256-7-39000	39000.0	3.576	2.1	1.6	1.75	.028
RL-1256-7-47000	47000.0	3.936	1.9	1.6	1.78	.028
RL-1256-7-56000	56000.0	4.320	1.7	1.5	1.80	.028
RL-1256-7-68000	68000.0	5.220	1.5	1.3	1.85	.028



## RENCO ELECTRONICS, INC.

595 International Place, Rockledge, FL 32955-4200 USA

(321) 637-1000 • Toll Free Engineering Hot line 800-645-5828

Fax: (321) 637-1600 Web Site: [www.rencousa.com](http://www.rencousa.com) E-mail: [sales@rencousa.com](mailto:sales@rencousa.com)



<b>RL-1256-8</b>						
Renco Part No.	Inductance ODC (μH)	Max. DCR (Ohms)	Saturation Current (DC Amps)	Rated Current (Amps)	Dimension "E" Approx. (Inches)	Pin Dimension Approx. (Inches)
RL-1256-8-5.6	5.6	.0012	233	55	*	.225
RL-1256-8-6.8	6.8	.0013	197	55	*	.225
RL-1256-8-8.2	8.2	.0015	171	55	*	.225
RL-1256-8-10	10.0	.0017	170	55	*	.225
RL-1256-8-12	12.0	.0020	150	55	*	.225
RL-1256-8-15	15.0	.0021	135	55	*	.225
RL-1256-8-18	18.0	.0023	122	55	*	.225
RL-1256-8-22	22.0	.0025	111	55	*	.225
RL-1256-8-27	27.0	.0026	102	55	*	.225
RL-1256-8-33	33.0	.0029	95	55	*	.225
RL-1256-8-39	39.0	.0033	83	55	*	.225
RL-1256-8-47	47.0	.0035	77	55	*	.225
RL-1256-8-56	56.0	.0039	69	55	*	.225
RL-1256-8-68	68.0	.0043	62	50	*	.225
RL-1256-8-82	82.0	.0048	57	45	*	.210
RL-1256-8-100	100.0	.0052	52	40	*	.210
RL-1256-8-120	120.0	.0071	48	39	*	.210
RL-1256-8-150	150.0	.0079	43	38	*	.210
RL-1256-8-180	180.0	.0087	39	37	*	.210
RL-1256-8-220	220.0	.0120	35	33	*	.190
RL-1256-8-270	270.0	.014	32	30	*	.190
RL-1256-8-330	330.0	.018	29	27	1.80	.120
RL-1256-8-390	390.0	.020	27	25	1.70	.120
RL-1256-8-470	470.0	.028	24	21	1.70	.105
RL-1256-8-560	560.0	.031	22	20	1.75	.105
RL-1256-8-680	680.0	.034	20	19	1.80	.105
RL-1256-8-820	820.0	.047	18	16	1.80	.094
RL-1256-8-1000	1000.0	.052	16	15.5	1.75	.094
RL-1256-8-1200	1200.0	.057	15	15	1.78	.094
RL-1256-8-1500	1500.0	.080	13	13	1.80	.084
RL-1256-8-1800	1800.0	.088	12	12	1.70	.084
RL-1256-8-2200	2200.0	.122	11	10	1.70	.075
RL-1256-8-2700	2700.0	.135	10	10	1.75	.075
RL-1256-8-3300	3300.0	.188	9	8	1.80	.068
RL-1256-8-3900	3900.0	.205	8	8	1.75	.068
RL-1256-8-4700	4700.0	.283	7.7	6.7	1.78	.060
RL-1256-8-5600	5600.0	.309	7.0	6.4	1.80	.060
RL-1256-8-6800	6800.0	.431	6.4	5.4	1.70	.054
RL-1256-8-8200	8200.0	.472	5.8	5.2	1.75	.054
RL-1256-8-10000	10000.0	.521	5.2	5.0	1.80	.054
RL-1256-8-12000	12000.0	.717	4.8	4.2	1.80	.048
RL-1256-8-15000	15000.0	.803	4.3	4.0	1.75	.048
RL-1256-8-18000	18000.0	1.111	3.9	3.4	1.78	.043
RL-1256-8-22000	22000.0	1.228	3.5	3.2	1.80	.043
RL-1256-8-27000	27000.0	1.716	3.2	2.7	1.75	.039
RL-1256-8-33000	33000.0	1.896	2.9	2.6	1.80	.039
RL-1256-8-39000	39000.0	2.590	2.6	2.3	1.75	.035
RL-1256-8-47000	47000.0	2.840	2.4	2.2	1.78	.035
RL-1256-8-56000	56000.0	3.104	2.2	2.1	1.80	.035
RL-1256-8-68000	68000.0	4.331	2.0	1.7	1.85	.031
RL-1256-8-82000	82000.0	4.756	1.8	1.6	1.90	.031
RL-1256-8-100000	100000.0	6.652	1.6	1.4	1.95	.028

\* Inductors wound with 2 strands of wire. Consult Engineering for dimension.



## RENCO ELECTRONICS, INC.

595 International Place, Rockledge, FL 32955-4200 USA

(321) 637-1000 • Toll Free Engineering Hot line 800-645-5828

Fax: (321) 637-1600 Web Site: [www.rencousa.com](http://www.rencousa.com) E-mail: [sales@rencousa.com](mailto:sales@rencousa.com)