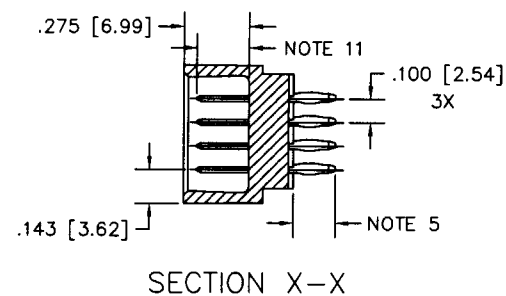
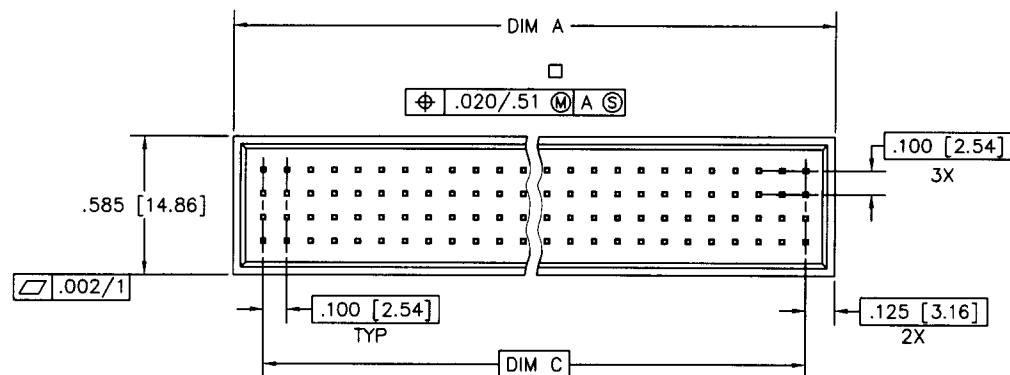
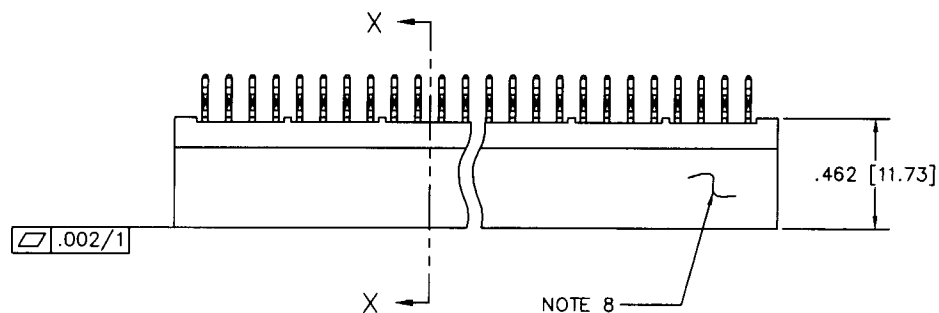

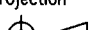


All rights strictly reserved. Reproduction or issue to third parties in any form whatever is not permitted without written authority from the proprietor.  
Property of FCI. Copyright FCI.



mat'l. code NOTE 3				tolerances unless otherwise specified			CUSTOMER COPY		 Electronics FCI www.fciconnect.com		
litr	ecn no	dr	date	linear	.XX±.01/.X±.3			projection 	title 4 ROW VERTICAL HEADER CARD CONN. STYLE, PRESS FIT product family HPC size dwg no 50355		
A	V11962	RDS	8/2/91		.XXX±.005/.XX±.13						
B	V12628	RDS	10/4/91	.XXXX±.0020/.XXX±.051							
C	V30263	JM	2/22/93	angles	0° ±2°						
D	V90651	HTB	4/8/99	dr	S. SHEAFFER	1/16/91					
E	V00278	JWS	2/4/00	enrg	S. CLARK	8/2/91	INCH/MM	code 213			
				chr	S. CLARK	8/2/91	scale	sheet 1 of 2			
				appd	S. CLARK	8/2/91	1:1	A			
sheet index	revision sheet	E 1	E 2								

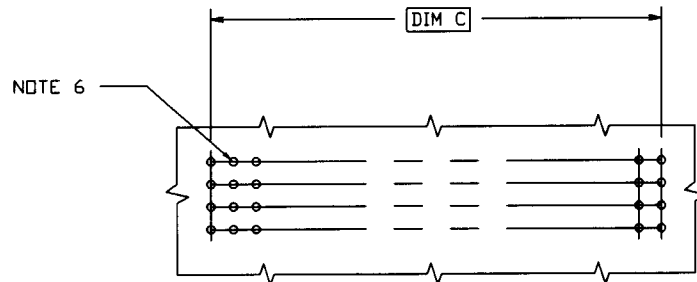


Tous droits strictement reserves. Reproduction ou communication a des tiers interdite sous quelque forme que ce soit sans autorisation écrite du propriétaire. Propriété de c FCI. Droits de reproduction FCI



All rights strictly reserved. Reproduction or issue to third parties in any form whatever is not permitted without written authority from the proprietor. Property of FCI. Copyright FCI

PRODUCT NUMBER	DIM	LENGTH FORMULAS
SEE NOTE 2	DIM A	.100/2.54 X NO. OF COLUMNS + .15/3.8
	DIM C	.100/2.54 X NO. OF COLUMNS - .100/2.54



RECOMMENDED PCB LAYOUT  
ALL HOLES LOCATED ON .100/2.54 GRID  
UNLESS OTHERWISE SPECIFIED

#### NOTES:

- THIS PRODUCT IS CONFIGURED IN SIZES OF 10 THRU 50 COLUMNS IN INCREMENTS OF ONE.  
IE: 10,11,12,13,.....49,50.
- PRODUCT DESCRIPTION CODE:  
50355 - X YYY Z  
TAIL LENGTH (NOTE 5)  
NO OF POSITIONS  
PLATING (NOTE 4)  
BASE NUMBER
- HOUSING MAT'L: GLASS AND MINERAL FILLED HIGH TEMP. THERMOPLASTIC. FLAME RETARDANT PER UL94V-0. COLOR: BLACK.  
PIN MAT'L: PHOS BRONZE
- PLATING, CONTACT AREA OPTIONS:  
1 = 30u"/.76u GOLD  
3 = 50u"/1.27u GOLD  
5 = 30u"/.76u GXT
- TAIL LENGTH OPTIONS:  
A = .177/4.5 P = .470/11.94 .062 PCB/SHROUD  
C = .533/13.54 L = .177/4.50 .062 PCB  
D = .733/18.62  
G = .250/6.35
- Ø.0453/1.151 DRILLED HOLE PLATED WITH .0003/.007 MIN SnPb OVER .001/.03 TO .003/.08 Cu. PLATING TO ACHIEVE A Ø.040±.003/1.02±.08 HOLE.
- TO ASSURE PROPER INSTALLATION; MANUFACTURER'S TOOLING AS SPECIFIED IN INSTRUCTION MANUAL 155915-001, MUST BE USED. PIN MATING LENGTH WILL BE ±.002/.05 AFTER INSTALLATION.
- MANUFACTURER'S NAME AND P/N, AND LOT CODE TO APPEAR ON THIS SURFACE PER BUS-12-108.
- FOR DOCUMENTATION MENU, SEE SPECIFICATION BUS-01-057.
- FOR PRODUCT PERFORMANCE SEE PRODUCT SPECIFICATION NUMBER BUS-12-090.
- STANDARD MATING LENGTH IS .22/5.6.  
OTHER COMMON LENGTHS AVAILABLE ARE .18/4.6 AND .26/6.6. FIRST-MATE/LAST-BREAK APPLICATIONS CAN BE DEVELOPED BY SELECTIVELY LOADING THESE VARYING MATING LENGTHS - SEE DRAWING P/N 50145. CUSTOM MATING LENGTHS ARE AVAILABLE. CONTACT YOUR CUSTOMER SERVICE REPRESENTATIVE FOR INFORMATION.

mat'l. code				tolerances unless otherwise specified		CUSTOMER COPY		FCI Electronics www.fciconnect.com	
ltr	ecn no	dr	date	linear	.XX±.01/.X±.3	projection		title 4 ROW VERTICAL HEADER CARD CONN. STYLE, PRESS FIT	
E					.XXX±.005/.XX±.13				
					.XXX±.0020/.XXX±.051				
				angles	0° ±2°	INCH/MM		product family HPC code 213	
				dr	D. SHEAFFER 1/16/91				
				enrg	S. CLARK 8/2/91				
				chr	S. CLARK 8/2/91	scale 1:1	A	size dwg no 50355 sheet 2 of	
				appd	S. CLARK 8/2/91				
sheet index	revision sheet							cage code 22526	