

REVISION AJ

- NOTES:
- ① REPRESENTS A CRITICAL DIMENSION FOR STATISTICAL PROCESS CONTROL USE.
 - ALL DIMENSIONS IN BRACKETS [] TO BE MILLIMETERS.
 - TUBE POSITIONS -05 THRU -36 ONLY; POSITIONS -02 THRU -04 TO BE LAYER PACKAGED.
 - .020 [.51] MAX CUT FLASH, CUT FLASH TO BE IN A NON-CRITICAL AREA LOCATED BETWEEN BODIES.

DO NOT SCALE FROM THIS PRINT

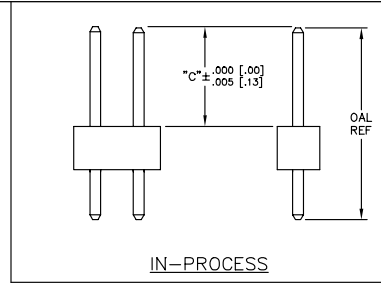
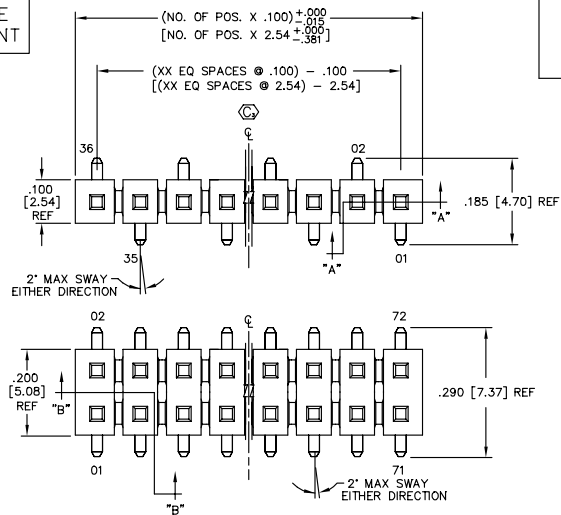


TABLE 1

LEAD STYLE	TERMINAL	"H" REF	"A" WHEN "B" IS .090 [2.29]	"C"	IN-PROCESS OAL REF
-08	T-1S6-08-XX-2	.465 [11.81]	.375 [9.53]	.315 [8.00]	.530 [13.46]
-09	T-1S6-09-XX-2	.665 [16.89]	.575 [14.61]	.515 [13.08]	.730 [18.54]
-10	T-1S6-10-XX-2	.765 [19.43]	.675 [17.15]	.615 [15.62]	.830 [21.08]
-11	T-1S6-11-XX-2	.865 [21.97]	.775 [19.69]	.715 [18.61]	.930 [23.62]
-12	T-1S6-12-XX-2	.965 [25.11]	.875 [22.23]	.815 [20.70]	1.030 [26.16]
-15	T-1S6-15-XX-2	.565 [14.35]	.475 [12.07]	.415 [10.54]	.630 [16.00]
-16	T-1S6-16-XX-2	.380 [9.65]	.290 [7.37]	.230 [5.84]	.445 [11.30]
-17	T-1S6-17-XX-2	.415 [10.54]	.325 [8.26]	.265 [6.73]	.480 [12.19]
-20	T-1S6-20-XX-2	1.065 [27.05]	.975 [24.77]	.915 [23.24]	1.130 [28.70]

UNLESS OTHERWISE NOTED TOLERANCES ARE:

ONE PLACE DECIMALS ± .1 [3] THREE PLACE DECIMALS ± .005 [0.13] ANGLES ± 2°

TWO PLACE DECIMALS ± .01 [0.3] FOUR PLACE DECIMALS ± .0020 [0.051]

TITLE: HW BOARD TO BOARD ASSEMBLY

DWG NO: HW-XX-XX-XX-X-XXXX-SM-X-XXX

SHEET 1 OF 1

HW-XX-XX-XX-X-XXXX-SM-X-XXX

NO. OF POSITIONS -02 THRU -36

LEAD STYLE (SEE TABLE 1)

OPTION #2 POLARIZED POSITION SPECIFY OMITTED PIN

OPTION #1 LG LOCKING CLIP (SEE FIG. 1) (-3 USE TSM-50-SV BODY) USE LC-08-TM-02 (-4 ALIGNMENT PIN (SEE FIG. 2) (-8 2 - 3 POSITIONS USE TSM-XX-SV-A, MUST BE MOLDED TO POSITION) (-4 - 30 POSITIONS USE TSM-XX-SV-000) (-D FOR MOLDED TO POSITION, USE RTSM-50-DVU-XX BODY, AVAILABLE ON POS -02 THRU -36 (-D FOR STAGGED, USE RTSM-50-DVU-XX BODY, LEAVE BLANK FOR NO HOLD DOWN OPTION (-10 USE RTSM-50-DVU (SEE FIG. 1) CAN BE CUT TO POSITION) (-5 USE TSM-50-SV (SEE FIG. 1) CAN BE CUT TO POSITION) -70 TAP & REEL (27 MAX POSITIONS) (MAX HEIGHT .6875)

BOARD SPACE "A" = .XXX (SEE FIG. 1 & TABLE 1) MAX = C + .150

SURFACE MOUNT

ELATING SPEC:

- T: TIN -SPECIFY -T IN TERMINAL SUFFIX -XX
- S: SELECTIVE -SPECIFY -S IN TERMINAL SUFFIX -XX
- G: GOLD -SPECIFY -G IN TERMINAL SUFFIX -XX
- L: SELECTIVE -SPECIFY -L IN TERMINAL SUFFIX -XX
- N: SELECTIVE NICKEL -SPECIFY -N IN TERMINAL SUFFIX -XX
- F: GOLD FLAMEDED PHALADIM NICKEL -SPECIFY -F IN TERMINAL SUFFIX -XX
- H: HEAVY GOLD -SPECIFY -H IN TERMINAL SUFFIX -XX
- P: FLASH GOLD -SPECIFY -P IN TERMINAL SUFFIX -XX
- M: MATTE TIN -SPECIFY -M IN TERMINAL SUFFIX -XX
- SM: SELECTIVE -SPECIFY -SM IN TERMINAL SUFFIX -XX
- SL: SELECTIVE -SPECIFY -SL IN TERMINAL SUFFIX -XX
- FM: FLASH GOLD -SPECIFY -FM IN TERMINAL SUFFIX -XX

ROW OPTION

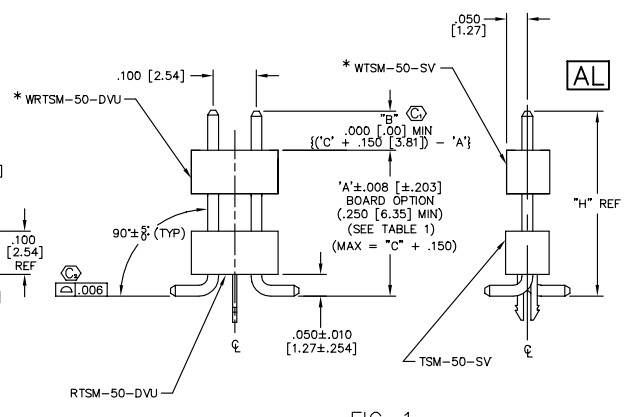
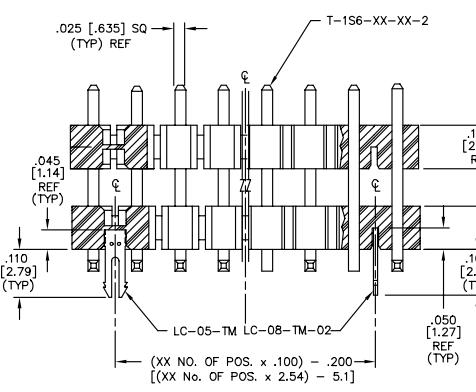
- S: DOUBLE ROW (USE RTSM-50-DVU FOR BOTTOM INSULATOR)
- D: SINGLE ROW (USE TSM-XX-SV BODY FOR BOTTOM INSULATOR (USE RTSM-50-SV FOR TOP INSULATOR)

PACKAGING VIEW

NOTE: VIEW DRAWN TO SHOW LOCATION OF PLUG IN TUBE.

TABLE 2

ROW OPTION	PACKAGING TUBE (SEE NOTE 3)	PLUG
-S: SINGLE	PT-1-24-01-47	TP-24
-D: DOUBLE	PT-1-24-02-47	TP-03
LEAD STYLE -20 DOUBLE	PT-1-24-04-51	TP-13
LEAD STYLE -20 SINGLE	PT-1-24-06-03	TP-07



DIFFERENT AS SHOWN. OTHERWISE SAME AS FIG. 1.
(02 POS USE 1 PER STRIP) (03-36 POS USE 2 PER STRIP)

T-1S6-XX-XX-2

*WRTSM-50-DVU

*WRTSM-50-SV

SM-AH

TSM-XX-SV-XX

.062 DIA REF [1.57]

.047 DIA REF [1.19]

(XX NO. OF POS. X .100) - .200
[(XX NO. OF POS. X 2.54) - 5.1]

FIG. 2

-A: ALIGNMENT PIN OPTION
ALIGNMENT PINS APPEAR ON -A OPTION ONLY.

TABLE 3

"D"	BODY
MOLDED .100 [2.54] REF	RTSM-50-DVU-XX TSM-XX-SV-XX
STAKED .100 ± .005 [2.45 ± .13]	RTSM-50-DVU

EXISPRO/VASSEMBLY/100 HWASA-SM

samtec

520 PARK EAST BLVD., NEW ALBANY, INDIANA 47150
PHONE (812) 344-4733 P.O. BOX 1147
CODE 55322

MADE BY: DARY PURVIS 3-12-93 APPROV: PAE
CHECKED BY: ECKERT

HW-XX-XX-XX-X-XXXX-SM-X-XXX
SHEET 1 OF 1

PROPRIETARY NOTE
THIS DOCUMENT CONTAINS INFORMATION OF A CONFIDENTIAL AND PROPRIETARY NATURE AND IS NOT TO BE REPRODUCED OR TRANSMITTED IN ANY FORM OR BY ANY MEANS, ELECTRONIC OR MECHANICAL, INCLUDING PHOTOCOPYING, RECORDING, OR BY ANY INFORMATION STORAGE AND RETRIEVAL SYSTEM WITHOUT THE WRITTEN CONSENT OF SAMTEC INC.