

**SLP-2 Series**  
**Multi-Mode**  
**ST™ CONNECTOR PLUG**  
**TECHNICAL SPECIFICATIONS**

**Seiko Instruments Inc.**  
Components Sales Dept.  
8, Nakase 1-Chome  
Mihama-ku, Chiba-shi, Chiba-ken  
261 JAPAN  
Telephone : 043-211-1214  
                    -1215  
Facsimile : 043-211-8035

# SLP-2 Series Multi-Mode ST™ CONNECTOR PLUG TECHNICAL SPECIFICATIONS

Document Number NCD-64B4-02

NAE12D01	February.1991
39052-2273-01	September.1991
39055-1015-01	October.1993
NCD-4oB6-01	October.1994
NCD-4oB7-01	October.1994
NCD-64B4-01	April.1996
NCD-64B4-02	September.1996

Copyright 1991, 1993, 1994, 1996 by **Seiko Instruments Inc.**  
All right reserved.

The information contained herein shall not reproduced or disclosed to any third party without the express written consent of **SII**.

The Specifications contained herein are subject to change without notice.

**SII** is a trademark of **Seiko Instruments Inc.**

**ST** is a registered trademark of **AT&T Technologies.**

**Kevler** is a registered trademark of **E.I. du pont de Nemours & Company Inc.**

Please address any questions, comments, and suggestions to:

**Seiko Instruments USA Inc.**

Electronics Components Division  
2990 West Lomita Boulevard  
Torrance, CA 90505, U.S.A.  
Phone: 310-517-7780  
Fax: 310-517-7792

**Seiko Instruments (H.K.) Ltd.**

Sales Department  
4th & 5th Floor, Wyler Center 2  
200 Tai Lin Pai Road, Kwai Chung  
N.T., Kowloon, Hong Kong  
Phone: 852-2421-8611  
Fax: 852-2480-5479

**Seiko Instruments Singapore pte. Ltd.**

2, Marsiling Lane,  
Woodlands New Town,  
Singapore, 2573, Singapore  
Phone: 65-2691370  
Fax: 65-2699729

**Seiko Instruments GmbH**

OFC Division  
Siemensstraße 9b  
D-63263 Neu-Isenburg, Germany  
Phone: 06102-297-0  
Fax: 06102-297-211

**Seiko Instruments Taiwan Inc.**

Sales Department  
5F-1, No.99, Sec. 2, Chung Shan  
Rd.  
Taipei 104, Taiwan, R.O.C.  
Phone: 02-563-5001, 523-5111  
Fax: 02-521-9519

## TABLE OF CONTENTS

Section	Page
1. PROVISION	1
1.1 Application Limit	1
2. PARTS NUMBER	1
3. GENERAL SPECIFICATIONS	2
3.1 Parts and Materials	2
3.2 Physical Dimensions	2
3.3 General Tolerances	2
4. PACKING	3

### Table

Table 1	Parts Number	1
Table 2	Parts and Materials	2
Table 3	Parts and Materials ( Main body )	2
Table 4	General Tolerance	2

### Figure

Figure 1	SLP-2 Connector	4
Figure 2	SLP-2 Connector ( PD Type )	5
Figure 3 to 9	Part Dimensions	6



## 1. PROVISION

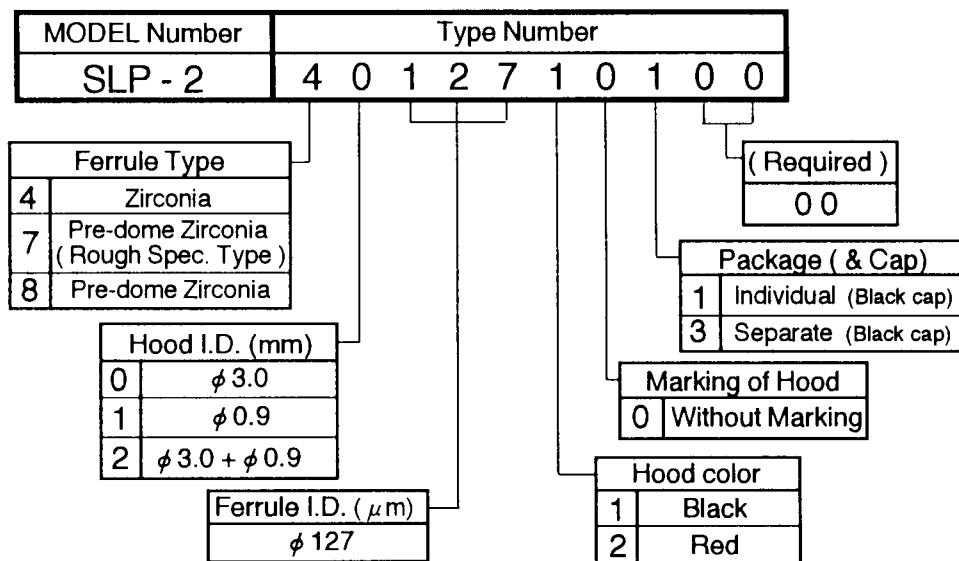
### 1.1 Application Limit

These specifications apply to the SLP-2 Multi-Mode ST™ CONNECTOR PLUG supplied by **SII**.

## 2. PARTS NUMBER

Parts Number of the Connector is Shown in Table 1.

Table 1 Parts Number



### 3. GENERAL SPECIFICATIONS

#### 3.1 Parts and Materials

Parts and the materials are shown in Table 2 to 3.

Table 2 Parts and materials

No.	Part Name	Q'ty	Material	Notes
①	Main body	1	See Table 3	--
②	Kevler crimping ring	1	Aluminum alloy	--
③	Hood ( for $\phi$ 3.0mm cord)	( 1 )	Synthetic Rubber	According to Table 1, Color : Black
④	Hood ( for $\phi$ 0.9mm cord)	( 1 )	Synthetic Rubber	According to Table 1, Color : Black
⑤	Cap	1	PVC	Color : Black

Table 3 Parts and materials (Main body )

No.	Part Name	Q'ty	Material	Notes
⑥	Ferrule	1	Zirconia Ceramics	--
⑦	Shell	1	Zinc Die-cast	Nickel Plating
⑧	Byyonet	1	Zinc Die-cast	Nickel Plating
⑨	Spring	1	Stainless Steel	--
⑩	C-Ring	1	Stainless Steel	--

#### 3.2 Physical Dimensions

Figure 1 to 2 shows the assembled state of SLP-2.

Figure 3 to 9 show the part dimension.

#### 3.3 General Tolerances

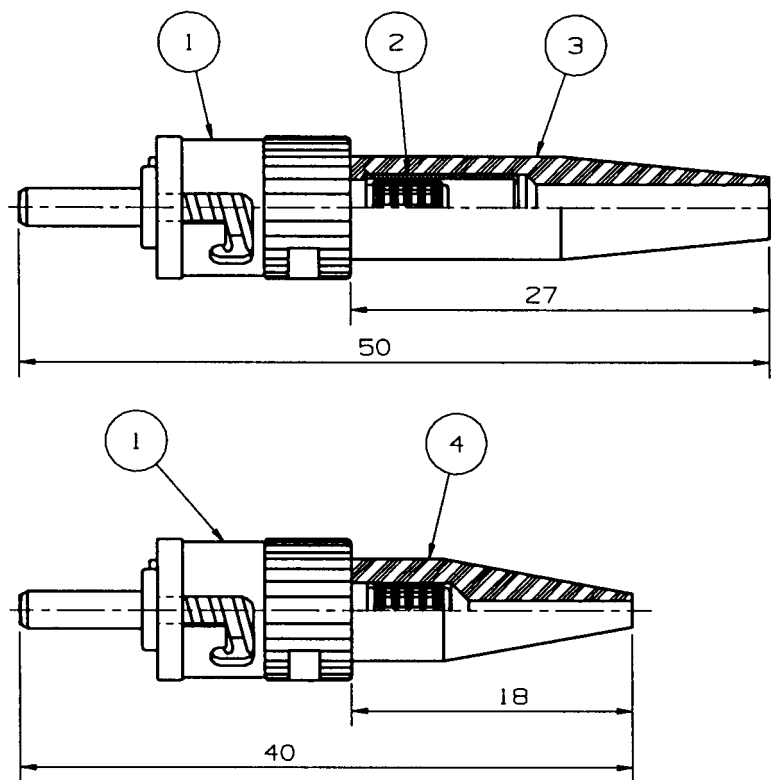
Permissible deviation in dimensions without tolerance indication is in accordance with JIS B 0405 class m, as shown in Table 4.

Table 4 General tolerance (JIS B 0405 class m)

Basic size step (mm)		Permissible deviation (mm)
Over	Under	
0.5	3	$\pm 0.1$
3	6	$\pm 0.1$
6	30	$\pm 0.2$
30	120	$\pm 0.3$

#### 4. PACKING

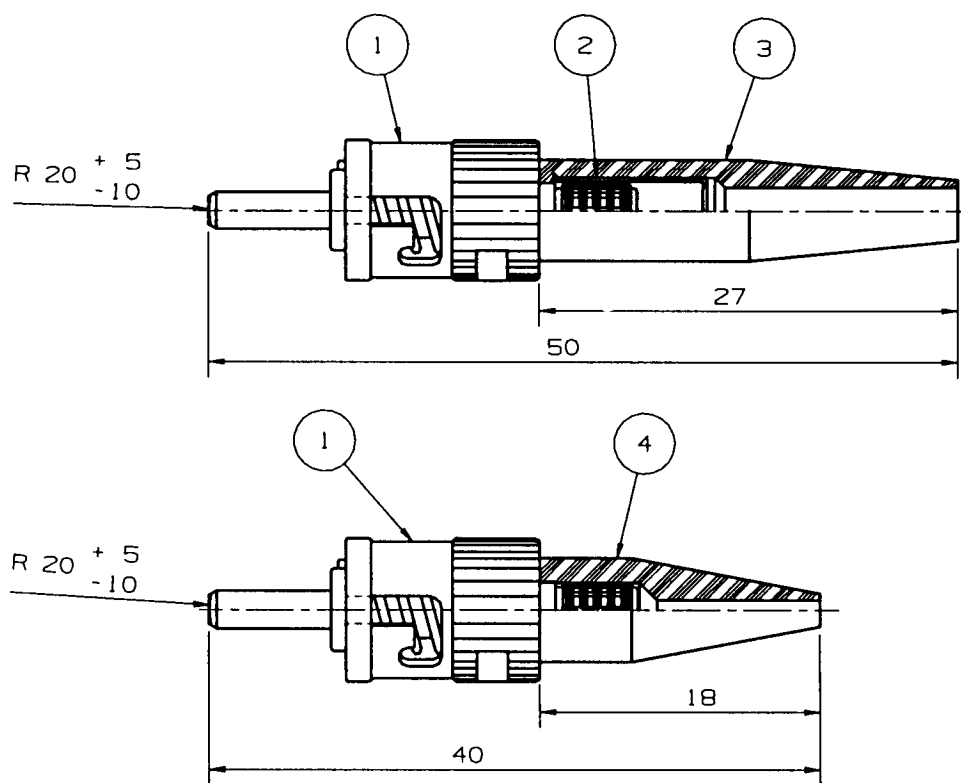
The product is packed to prevent damage during shipment.



note.1: This drawing does not include Caps.

Unit: mm

Figure 1 SLP-2 CONNECTOR

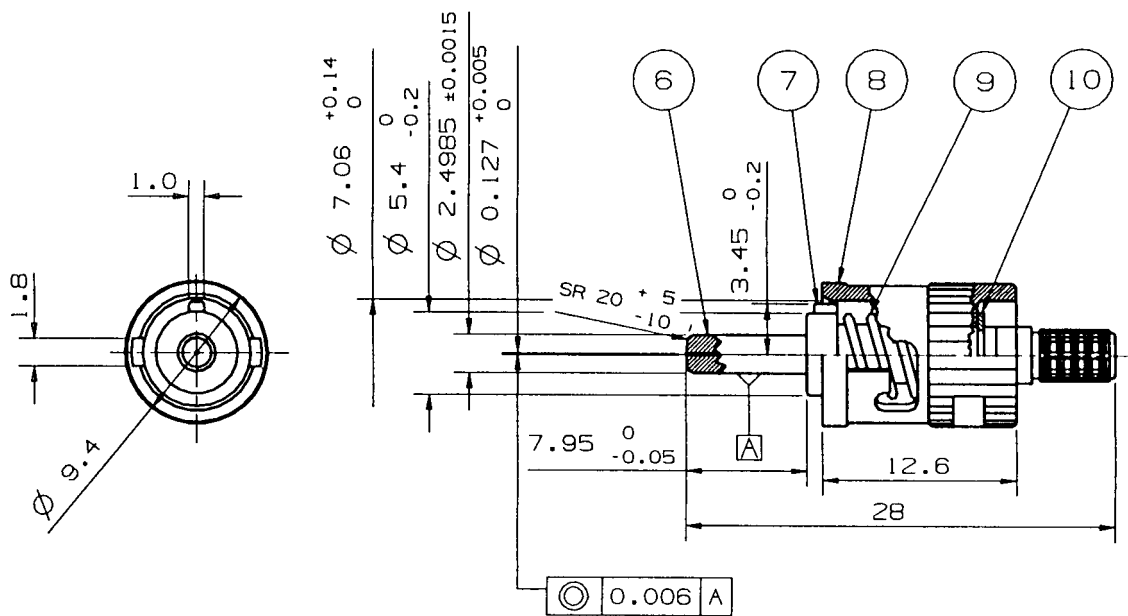


note.1: This drawing does not include Caps.

Unit: mm

Figure 2 SLP-2 CONNECTOR ( PD Type )

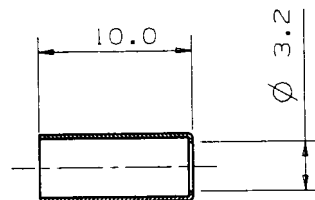




note . End curve offset = 0.05 mm or less. ( Pre-dome )

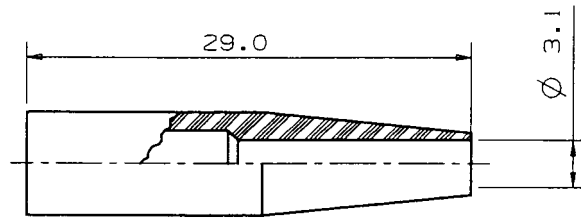
Unit: mm

Figure 5 ① Main body ( PD rough spec. Type )



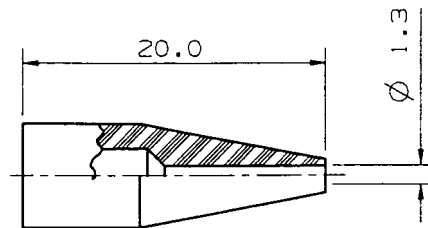
Unit: mm

Figure 6 ② Kevlar crimping ring



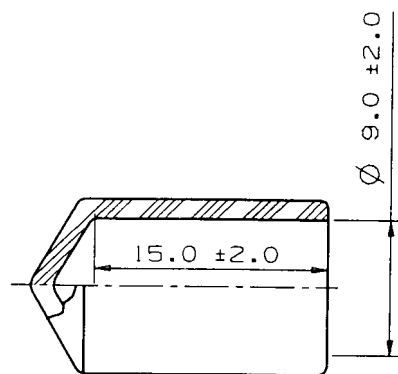
Unit: mm

Figure 7 ③ Hood



Unit: mm

Figure 8 ④ Hood



Unit: mm

Figure 9 ⑤ Cap