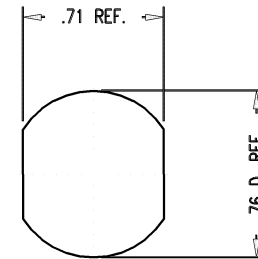
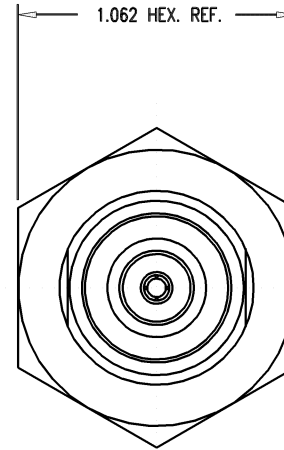
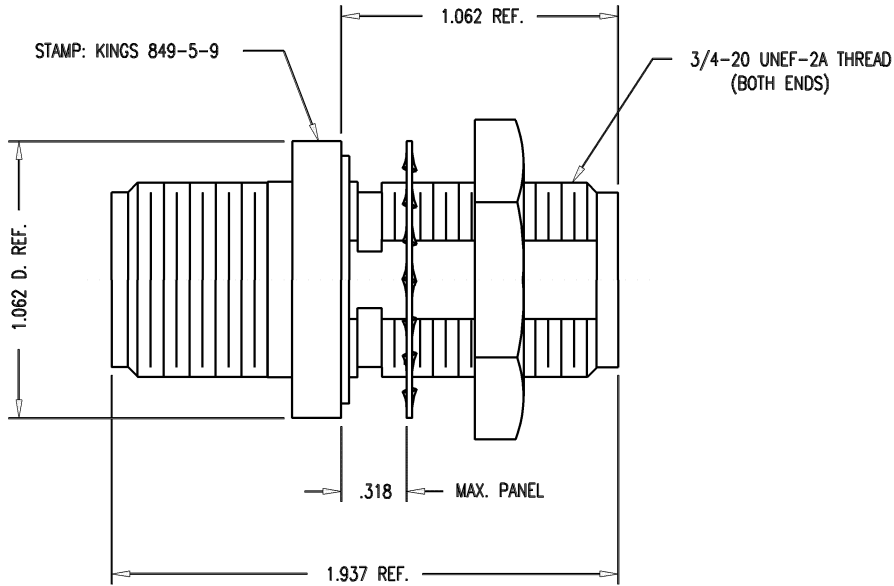


DASH NO.	M CODE	MADE FROM
----------	--------	-----------

GSD



MOUNTING HOLE

GSD

- NOTES:
- CONNECTOR MEETS LEAKAGE RATE OF 1×10^{-7} CC/SEC.
 - MATERIAL:
 INSULATORS-TEFLON, ASTM-D-4894
 GASKETS-SILICONE RUBBER, ZZ-R-765
 LOCKWASHER-PHOSPHOR BRONZE, ASTM-B-103
 CENTER CONTACT-BERYLLIUM COPPER, ASTM-B-196
 ALL OTHER METAL PARTS-BRASS, ASTM-B16
 - FINISHES:
 CENTER CONTACT-GOLD PLATE PER MIL-G-45204
 ALL OTHER METAL PARTS-KINGS TARNISH RESISTANT NICKEL FINISH (TR-5)
 - ELECTRICAL CHARACTERISTICS:
 WORKING VOLTAGE-1500 VOLTS RMS
 NOMINAL IMPEDANCE-50 OHMS
 FREQUENCY RANGE-DC TO 4 GHZ

849-5-9

REVISIONS

ISSUE	CHANGES
0	ER 36946 KH 04/30/96

KAM6589

SCALE 2:1

APPROX SURFACE AREA

USED ON

REF: BOEING

ADAPTER, F TO F,
HERMETIC, BULKHEAD, HN

DRAWN KH DATE 04/30/96

DESIGN AR DATE 05/01/96

APPR. DATE

KINGS
ELECTRONICS CO., INC.
TUCKAHOE, NEW YORK 10707

849-5-9