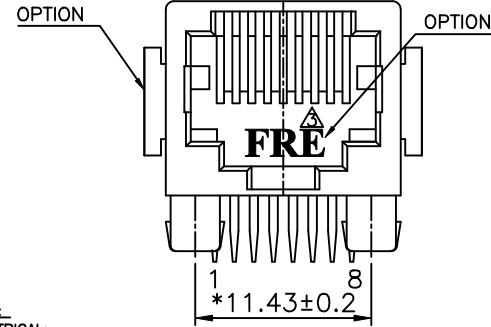
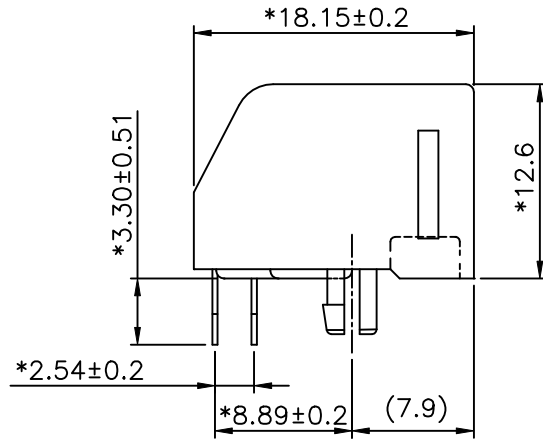
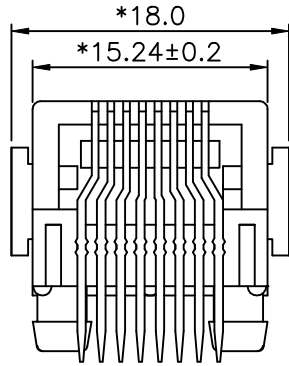


		REVISION RECORD			
REV	ECO	DESCRIPTION	DRFT	CHKD	
△		ADD PART NUMBER	JACK		6/7/99
△		DIM MODIFY	CHUN		10/21/99
△		DRAWING MODIFY	LG		11/19/02
△		PART NUMBER MODIFY	LG		11/21/02
△		PART NUMBER MODIFY	LG		12/03/02



NOTES:

ELECTRICAL:

- VOLTAGE RATING : 125 VAC RMS.
- CURRENT RATING : 1.5 AMP.
- CONTACT RESISTANCE : 35 MILLIOHMS MAX.
- INSULATION RESISTANCE: 1000 MEGOHMS MIN @ 500 VDC.
- DIELECTRIC STRENGTH : 1000 VAC RMS 60Hz, 1MIN.

MECHANICAL:

- HOUSING MATERIAL : GLASS FILLED POLYESTER UL94V-0.
- CONTACT MATERIAL : PHOSPHOR BRONZE t=0.35mm.
- PLATING : GOLD PLATING OVER NICKEL.
- OPERATING LIFE : 750 CYCLES MIN.
- PCB RETENTION PRE-SOLDER : 1 LB MIN.
- PCB RETENTION POST-SOLDER: 10 LBS MIN.

ENVIRONMENTAL:

- STORAGE : -40°C TO +85°C.
- OPERATION: 0°C TO 70°C.

MATES WITH MODULAR PLUG CONFORMING TO

FCC PART 68, SUBPART F.

CUL FILE NO. E163191

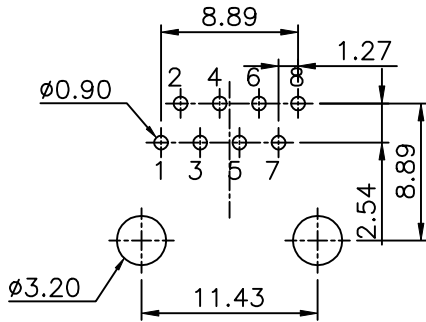
PART NUMBER: E628X-000XXX

NO. OF CONTACT	1- 3u"	2- 6u"
8-8 CONTACTS	3-15u"	4-30u"
6-6 CONTACTS	5-50u"	
4-4 CONTACTS		
2-2 CONTACTS		

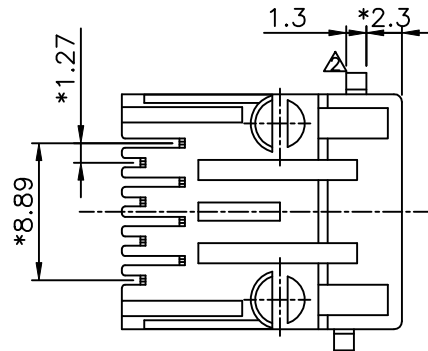
LEAD FREE PART NUMBER: E628X-000XXX-L

NO. OF CONTACT	1- 3u"	2- 6u"
8-8 CONTACTS	3-15u"	4-30u"
6-6 CONTACTS	5-50u"	
4-4 CONTACTS		
2-2 CONTACTS		

- 2-A06-0080 BK
- 3-A05-0040 BK(FR50)
- 0-A06-0100 BK
- 7-A05-0130 BK



PC Board Layout Component Side Shown



<p>MM (INCH)</p> <p>TOLERANCES EXCEPT AS NOTED</p> <p>MM ± .0 ± 0.2 ± .00 ± 0.15 ± .000 ± 0.075</p> <p>ANGLES ± 0.5</p> <p>THIRD ANGLE PROJECTION</p>		<p>DFTO JAMIE DATE 9/9/'97</p> <p>CHKDQIANPU DATE 2004/12/09</p> <p>MFO DATE</p> <p>APPVL-SAMMY DATE 2004/12/09</p> <p>MATERIAL :</p> <p>QT'Y :</p> <p>FINISH :</p> <p>SCALE : 3 : 1</p>	<p>DATE 2004/12/09</p> <p>DATE 2004/12/09</p> <p>DATE</p> <p>DATE 2004/12/09</p> <p>DATE</p> <p>DATE</p> <p>DATE</p> <p>DATE</p> <p>DATE</p> <p>DATE</p>	<p>FULL RISE ELECTRONIC CO., LTD</p> <p>TITLE</p> <p>AMP L/P SIDE ENTRY PCB JACK 8P</p> <p>DRAWING NO. GE623053</p> <p>/PART NO. SEE NOTE</p> <p>DO NOT SCALE DRAWING</p>	<p>SIZE A3</p> <p>REV 8</p> <p>SHEET OF</p>
---	--	--	--	---	---