

HYS72T64300HP-[3/3S/3.7]-B
HYS72T128300HP-[3/3S/3.7]-B
HYS72T128320HP-[3/3S/3.7/5]-B

*240-Pin Registered DDR2 SDRAM Modules
PDIMM SDRAM
DDR2 SDRAM
RoHS Compliant*



Internet Data Sheet

Rev. 1.0



HYS72T[64/128]3x0HP-[3/3S/3.7/5]-B
240-Pin Registered DDR2 SDRAM

Revision History: 2006-10, Rev. 1.0	
All	Adapted internet edition
All	Initial document
Previous Revision: None	

We Listen to Your Comments

Any information within this document that you feel is wrong, unclear or missing at all?

Your feedback will help us to continuously improve the quality of this document.

Please send your proposal (including a reference to this document) to:

techdoc@qimonda.com



1 Overview

This chapter gives an overview of the 1.8 V 240-Pin Registered DDR2 SDRAM Modules product family and describes its main characteristics.

1.1 Features

- 240-Pin PC2-5300 and PC2-3200 DDR2 SDRAM memory modules for PC, Workstation and Server main memory applications.
- One rank 64M ×72, 128M ×72, and two ranks 128M ×72 module organization, and 64M ×8, 128M ×4 chip organization
- Registered DIMM Parity bit for address and control bus
- 512 MByte and 1 GByte module built with 512 Mbit DDR2 SDRAMs in PG-TFBGA-60 chipsize packages.
- Standard Double-Data-Rate-Two Synchronous DRAMs (DDR2 SDRAM) with a single + 1.8 V (± 0.1 V) power supply
- Programmable CAS Latencies (3, 4, 5), Burst Length (4 & 8) and Burst Type
- Auto Refresh (CBR) and Self Refresh
- Programmable self refresh rate via EMRS2 setting
- Programmable partial array refresh via EMRS2 settings
- DCC enabling via EMRS2 setting
- All inputs and outputs SSTL_18 compatible
- Off-Chip Driver Impedance Adjustment (OCD) and On-Die Termination (ODT)
- Serial Presence Detect with E²PROM
- RDIMM Dimensions (nominal): 18,3 mm high, 133.35 mm wide
- Based on standard reference card layouts Raw Card “R”, “T”, “U”
- All speed grades faster than DDR2-400 comply with DDR2-400 timing specifications.
- RoHS compliant products¹⁾

TABLE 1
Performance table for -3(S)

Product Type Speed Code			-3	-3S	Unit
Speed Grade			PC2-5300 4-4-4	PC2-5300 5-5-5	—
Max. Clock Frequency	@CL5	f_{CK5}	333	333	MHz
	@CL4	f_{CK4}	333	266	MHz
	@CL3	f_{CK3}	200	200	MHz
Min. RAS-CAS-Delay		t_{RCD}	12	15	ns
Min. Row Precharge Time		t_{RP}	12	15	ns
Min. Row Active Time		t_{RAS}	45	45	ns
Min. Row Cycle Time		t_{RC}	57	60	ns

1) RoHS Compliant Product: Restriction of the use of certain hazardous substances (RoHS) in electrical and electronic equipment as defined in the directive 2002/95/EC issued by the European Parliament and of the Council of 27 January 2003. These substances include mercury, lead, cadmium, hexavalent chromium, polybrominated biphenyls and polybrominated biphenyl ethers.



HYS72T[64/128]3x0HP-[3/3S/3.7/5]-B
240-Pin Registered DDR2 SDRAM

TABLE 2
Performance for -3.7

Product Type Speed Code			-3.7	Units
Speed Grade			PC2-4200 4-4-4	—
Max. Clock Frequency	@CL5	f_{CK5}	266	MHz
	@CL4	f_{CK4}	266	MHz
	@CL3	f_{CK3}	200	MHz
Min. RAS-CAS-Delay		t_{RCD}	15	ns
Min. Row Precharge Time		t_{RP}	15	ns
Min. Row Active Time		t_{RAS}	45	ns
Min. Row Cycle Time		t_{RC}	60	ns

TABLE 3
Performance table for -5

Product Type Speed Code			-5	Unit
Speed Grade			PC2-3200 3-3-3	—
max. Clock Frequency	@CL5	f_{CK5}	200	MHz
	@CL4	f_{CK4}	200	MHz
	@CL3	f_{CK3}	200	MHz
min. RAS-CAS-Delay		t_{RCD}	15	ns
min. Row Precharge Time		t_{RP}	15	ns
min. Row Active Time		t_{RAS}	40	ns
min. Row Cycle Time		t_{RC}	55	ns



HYS72T[64/128]3x0HP-[3/3S/3.7/5]-B
240-Pin Registered DDR2 SDRAM

1.2 Description

The Qimonda HYS72T[64/128]3x0HP-[3/3S/3.7/5]-B module family are Registered DIMM (with parity) modules with 18,3 mm height based on DDR2 technology. DIMMs are available as ECC modules in 64M x 72 (512 MB), 128M x 72 (1 GB) organization and density, intended for mounting into 240-Pin connector sockets. The memory array is designed with 512-Mbit Double-Data-Rate-Two (DDR2) Synchronous DRAMs. All control and address signals are re-driven on the DIMM using register devices and a PLL for the clock distribution. This reduces capacitive loading to the system

bus, but adds one cycle to the SDRAM timing. Decoupling capacitors are mounted on the PCB board. The DIMMs feature serial presence detect based on a serial E²PROM device using the 2-pin I²C protocol. The first 128 bytes are programmed with configuration data and the second 128 bytes are available to the customer.



TABLE 4
Ordering Information for RoHS Compliant Products

Product Type ¹⁾	Compliance Code ²⁾	Description	SDRAM Technology
PC2-5300			
HYS72T64300HP-3-B	512 MB 1Rx8 PC2-5300P-444-12-R0	1 Rank, ECC	512 Mbit (x8)
HYS72T128300HP-3-B	1 GB 1Rx4 PC2-5300P-444-12-U0	1 Rank, ECC	512 Mbit (x4)
HYS72T128320HP-3-B	1 GB 2Rx8 PC2-5300P-444-12-T0	2 Ranks, ECC	512 Mbit (x8)
PC2-5300			
HYS72T64300HP-3S-B	512 MB 1Rx8 PC2-5300P-555-12-R0	1 Rank, ECC	512 Mbit (x8)
HYS72T128300HP-3S-B	1 GB 1Rx4 PC2-5300P-555-12-U0	1 Rank, ECC	512 Mbit (x4)
HYS72T128320HP-3S-B	1 GB 2Rx8 PC2-5300P-555-12-T0	2 Ranks, ECC	512 Mbit (x8)
PC2-4200			
HYS72T64300HP-3.7-B	512 MB 1Rx8 PC2-4200P-444-12-R0	1 Rank, ECC	512 Mbit (x8)
HYS72T128300HP-3.7-B	1 GB 1Rx4 PC2-4200P-444-12-U0	1 Rank, ECC	512 Mbit (x4)
HYS72T128320HP-3.7-B	1 GB 2Rx8 PC2-4200P-444-12-T0	2 Ranks, ECC	512 Mbit (x8)
PC2-3200			
HYS72T128320HP-5-B	1 GB 2Rx8 PC2-3200P-333-12-T0	2 Ranks, ECC	512 Mbit (x8)

- 1) All part numbers end with a place code, designating the silicon die revision. Example: HYS72T64300HP-3.7-B, indicating Rev. "B" dies are used for DDR2 SDRAM components. For all Qimonda DDR2 module and component nomenclature see **Chapter 6** of this data sheet.
- 2) The Compliance Code is printed on the module label and describes the speed grade, for example "PC2-4200P-444-12-R0", where 4200P means Registered with Parity Bit DIMM modules with 4.26 GB/sec Module Bandwidth and "444-12" means Column Address Strobe (CAS) latency = 4, Row Column Delay (RCD) latency = 4 and Row Precharge (RP) latency = 4 using the latest JEDEC SPD Revision 1.2 and produced on the Raw Card "R"

HYS72T[64/128]3x0HP-[3/3S/3.7/5]-B
240-Pin Registered DDR2 SDRAM**TABLE 5**
Address Format

DIMM Density	Module Organization	Memory Ranks	ECC/ Non-ECC	# of SDRAMs	# of row/bank/column bits	Raw Card
512 MB	64M x72	1	ECC	9	14/2/10	R
1 GB	128M x72	1	ECC	18	14/2/11	U
1 GB	128M x72	2	ECC	18	14/2/10	T

TABLE 6
Components on Modules

Product Type	DRAM Components	DRAM Density	DRAM Organisation	Note ¹⁾
HYS72T64300HP	HYB18T512800BF	512 Mbit	64M x 8	2)
HYS72T128300HP	HYB18T512400BF	512 Mbit	128M x 4	2)
HYS72T128320HP	HYB18T512800BF	512 Mbit	64M x 8	2)

1) For a detailed description of all functionalities of the DRAM components on these modules see the component data sheet.

2) Green Product



2 Pin Configuration

2.1 Pin Configuration

The pin configuration of the Registered DDR2 SDRAM DIMM is listed by function in **Table 7** (240 pins). The abbreviations used in columns Pin and Buffer Type are explained in **Table 8** and **Table 9** respectively. The pin numbering is depicted in **Figure 1**.

TABLE 7
Pin Configuration of RDIMM

Ball No.	Name	Pin Type	Buffer Type	Function
Clock Signals				
185	CK0	I	SSTL	Clock Signal CK0, Complementary Clock Signal CK0
186	$\overline{\text{CK0}}$	I	SSTL	
52	CKE0	I	SSTL	Clock Enables 1:0
171	CKE1	I	SSTL	<i>Note: 2-Ranks module</i>
	NC	NC	—	Not Connected <i>Note: 1-Rank module</i>
Control Signals				
193	$\overline{\text{S0}}$	I	SSTL	Chip Select Rank 1:0 <i>Note: 2-Ranks module</i>
76	$\overline{\text{S1}}$	I	SSTL	
	NC	NC	—	Not Connected <i>Note: 1-Rank module</i>
192	$\overline{\text{RAS}}$	I	SSTL	Row Address Strobe (RAS), Column Address Strobe (CAS), Write Enable (WE)
74	$\overline{\text{CAS}}$	I	SSTL	
73	$\overline{\text{WE}}$	I	SSTL	
18	$\overline{\text{RESET}}$	I	CMOS	Register Reset
Address Signals				
71	BA0	I	SSTL	Bank Address Bus 1:0
190	BA1	I	SSTL	
54	BA2	I	SSTL	Bank Address Bus 2 Greater than 512Mb DDR2 SDRAMS
	NC	I	SSTL	Not Connected Less than 1Gb DDR2 SDRAMS



HYS72T[64/128]3x0HP-[3/3S/3.7/5]-B
240-Pin Registered DDR2 SDRAM

Ball No.	Name	Pin Type	Buffer Type	Function
188	A0	I	SSTL	Address Bus 12:0, Address Signal 10/AutoPrecharge
183	A1	I	SSTL	
63	A2	I	SSTL	
182	A3	I	SSTL	
61	A4	I	SSTL	
60	A5	I	SSTL	
180	A6	I	SSTL	
58	A7	I	SSTL	
179	A8	I	SSTL	
177	A9	I	SSTL	
70	A10	I	SSTL	
	AP	I	SSTL	
57	A11	I	SSTL	
176	A12	I	SSTL	
196	A13	I	SSTL	Address Signal 13
	NC	NC	—	Not Connected <i>Note: Non CA parity modules based on 256 Mbit component</i>
174	A14	I	SSTL	Address Signal 14 <i>Note: CA Parity module</i>
	NC	NC	—	Not Connected <i>Note: Non CA parity module. Less than 1 GBit per DRAM die.</i>
173	A15	I	SSTL	Address Signal 14 <i>Note: CA Parity module</i>
	NC	NC	—	Not Connected <i>Note: Non CA parity module. Less than 1 GBit per DRAM die.</i>



HYS72T[64/128]3x0HP-[3/3S/3.7/5]-B
240-Pin Registered DDR2 SDRAM

Ball No.	Name	Pin Type	Buffer Type	Function
Data Signals				
3	DQ0	I/O	SSTL	Data Bus 63:0 Data Input/Output pins
4	DQ1	I/O	SSTL	
9	DQ2	I/O	SSTL	
10	DQ3	I/O	SSTL	
122	DQ4	I/O	SSTL	
123	DQ5	I/O	SSTL	
128	DQ6	I/O	SSTL	
129	DQ7	I/O	SSTL	
12	DQ8	I/O	SSTL	
13	DQ9	I/O	SSTL	
21	DQ10	I/O	SSTL	
22	DQ11	I/O	SSTL	
131	DQ12	I/O	SSTL	
132	DQ13	I/O	SSTL	
140	DQ14	I/O	SSTL	
141	DQ15	I/O	SSTL	
24	DQ16	I/O	SSTL	
25	DQ17	I/O	SSTL	
30	DQ18	I/O	SSTL	
31	DQ19	I/O	SSTL	
143	DQ20	I/O	SSTL	
144	DQ21	I/O	SSTL	
149	DQ22	I/O	SSTL	
150	DQ23	I/O	SSTL	
33	DQ24	I/O	SSTL	
34	DQ25	I/O	SSTL	
39	DQ26	I/O	SSTL	
40	DQ27	I/O	SSTL	
152	DQ28	I/O	SSTL	
153	DQ29	I/O	SSTL	
158	DQ30	I/O	SSTL	
159	DQ31	I/O	SSTL	
80	DQ32	I/O	SSTL	
81	DQ33	I/O	SSTL	
86	DQ34	I/O	SSTL	
87	DQ35	I/O	SSTL	
199	DQ36	I/O	SSTL	
200	DQ37	I/O	SSTL	
205	DQ38	I/O	SSTL	



HYS72T[64/128]3x0HP-[3/3S/3.7/5]-B
240-Pin Registered DDR2 SDRAM

Ball No.	Name	Pin Type	Buffer Type	Function
206	DQ39	I/O	SSTL	Data Bus 63:0
89	DQ40	I/O	SSTL	
90	DQ41	I/O	SSTL	
95	DQ42	I/O	SSTL	
96	DQ43	I/O	SSTL	
208	DQ44	I/O	SSTL	
209	DQ45	I/O	SSTL	
214	DQ46	I/O	SSTL	
215	DQ47	I/O	SSTL	
98	DQ48	I/O	SSTL	
99	DQ49	I/O	SSTL	
107	DQ50	I/O	SSTL	
108	DQ51	I/O	SSTL	
217	DQ52	I/O	SSTL	
218	DQ53	I/O	SSTL	
226	DQ54	I/O	SSTL	
227	DQ55	I/O	SSTL	
110	DQ56	I/O	SSTL	
111	DQ57	I/O	SSTL	
116	DQ58	I/O	SSTL	
117	DQ59	I/O	SSTL	
229	DQ60	I/O	SSTL	
230	DQ61	I/O	SSTL	
235	DQ62	I/O	SSTL	
236	DQ63	I/O	SSTL	
Check Bits				
42	CB0	I/O	SSTL	Check Bits 7:0 Check Bit Input / Output pins <i>Note: NC on Non-ECC module</i>
43	CB1	I/O	SSTL	
48	CB2	I/O	SSTL	
49	CB3	I/O	SSTL	
161	CB4	I/O	SSTL	
162	CB5	I/O	SSTL	
167	CB6	I/O	SSTL	
168	CB7	I/O	SSTL	



HYS72T[64/128]3x0HP-[3/3S/3.7/5]-B
240-Pin Registered DDR2 SDRAM

Ball No.	Name	Pin Type	Buffer Type	Function
Data Strobe Bus				
7	DQS0	I/O	SSTL	Data Strobes 17:0
6	$\overline{\text{DQS0}}$	I/O	SSTL	
16	DQS1	I/O	SSTL	
15	$\overline{\text{DQS1}}$	I/O	SSTL	
28	DQS2	I/O	SSTL	
27	$\overline{\text{DQS2}}$	I/O	SSTL	
37	DQS3	I/O	SSTL	
36	$\overline{\text{DQS3}}$	I/O	SSTL	
84	DQS4	I/O	SSTL	
83	$\overline{\text{DQS4}}$	I/O	SSTL	
93	DQS5	I/O	SSTL	
92	$\overline{\text{DQS5}}$	I/O	SSTL	
105	DQS6	I/O	SSTL	
104	$\overline{\text{DQS6}}$	I/O	SSTL	
114	DQS7	I/O	SSTL	
113	$\overline{\text{DQS7}}$	I/O	SSTL	
46	DQS8	I/O	SSTL	
45	$\overline{\text{DQS8}}$	I/O	SSTL	
125	DQS9	I/O	SSTL	
126	$\overline{\text{DQS9}}$	I/O	SSTL	
134	DQS10	I/O	SSTL	
135	$\overline{\text{DQS10}}$	I/O	SSTL	
146	DQS11	I/O	SSTL	
147	$\overline{\text{DQS11}}$	I/O	SSTL	
155	DQS12	I/O	SSTL	
156	$\overline{\text{DQS12}}$	I/O	SSTL	
202	DQS13	I/O	SSTL	
203	$\overline{\text{DQS13}}$	I/O	SSTL	
211	DQS14	I/O	SSTL	
212	$\overline{\text{DQS14}}$	I/O	SSTL	
223	DQS15	I/O	SSTL	
224	$\overline{\text{DQS15}}$	I/O	SSTL	
232	DQS16	I/O	SSTL	
233	$\overline{\text{DQS16}}$	I/O	SSTL	
164	DQS17	I/O	SSTL	
165	$\overline{\text{DQS17}}$	I/O	SSTL	



HYS72T[64/128]3x0HP-[3/3S/3.7/5]-B
240-Pin Registered DDR2 SDRAM

Ball No.	Name	Pin Type	Buffer Type	Function
Data Mask				
125	DM0	I	SSTL	Data Masks 8:0 <i>Note: x8 based module</i>
134	DM1	I	SSTL	
146	DM2	I	SSTL	
155	DM3	I	SSTL	
202	DM4	I	SSTL	
211	DM5	I	SSTL	
223	DM6	I	SSTL	
232	DM7	I	SSTL	
164	DM8	I	SSTL	
EEPROM				
120	SCL	I	CMOS	Serial Bus Clock
119	SDA	I/O	OD	Serial Bus Data
239	SA0	I	CMOS	Serial Address Select Bus 2:0
240	SA1	I	CMOS	
101	SA2	I	CMOS	
Parity				
55	ERR_OUT	O	CMOS	Parity bits
	PAR_IN	I	CMOS	
Power Supplies				
1	V_{REF}	AI	—	I/O Reference Voltage
238	V_{DDSPD}	PWR	—	EEPROM Power Supply
51, 56, 62, 72, 75, 78, 170, 175,, 181, 191, 194	V_{DDQ}	PWR	—	I/O Driver Power Supply
53, 59, 64, 67, 69, 172, 178, 184,, 187, 189, 197	V_{DD}	PWR	—	Power Supply
2, 5, 8, 11, 14, 17, 20, 23, 26, 29, 32, 35, 38, 41, 44, 47, 50, 65, 66, 79, 82, 85, 88, 91, 94, 97, 100, 103, 106, 109, 112, 115, 118, 121, 124, 127, 130, 133, 136, 139, 142, 145, 148, 151, 154, 157, 160, 163, 166, 169, 198, 201, 204, 207, 210, 213, 216, 219, 222, 225, 228, 231, 234, 237	V_{SS}	GND	—	Ground Plane



HYS72T[64/128]3x0HP-[3/3S/3.7/5]-B
240-Pin Registered DDR2 SDRAM

Ball No.	Name	Pin Type	Buffer Type	Function
Other Pins				
19, 55, 68, 102, 137, 138, 173, 220, 221	NC	NC	—	Not connected
195	ODT0	I	SSTL	On-Die Termination Control 1:0
77	ODT1	I	SSTL	<i>Note: 2-Ranks module</i>
	NC	NC	—	<i>Note: 1-Rank modules</i>

TABLE 8
Abbreviations for Buffer Type

Abbreviation	Description
SSTL	Serial Stub Terminated Logic (SSTL_18)
CMOS	CMOS Levels
OD	Open Drain. The corresponding pin has 2 operational states, active low and tristate, and allows multiple devices to share as a wire-OR.

TABLE 9
Abbreviations for Pin Type

Abbreviation	Description
I	Standard input-only pin. Digital levels.
O	Output. Digital levels.
I/O	I/O is a bidirectional input/output signal.
AI	Input. Analog levels.
PWR	Power
GND	Ground
NU	Not Usable
NC	Not Connected



3 Electrical Characteristics

3.1 Absolute Maximum Ratings

Caution is needed not to exceed absolute maximum ratings of the DRAM device listed in **Table 10** at any time.

TABLE 10
Absolute Maximum Ratings

Symbol	Parameter	Rating		Unit	Note
		Min.	Max.		
V_{DD}	Voltage on V_{DD} pin relative to V_{SS}	-1.0	+2.3	V	1)
V_{DDQ}	Voltage on V_{DDQ} pin relative to V_{SS}	-0.5	+2.3	V	1)2)
V_{DDL}	Voltage on V_{DDL} pin relative to V_{SS}	-0.5	+2.3	V	1)2)
V_{IN}, V_{OUT}	Voltage on any pin relative to V_{SS}	-0.5	+2.3	V	1)
T_{STG}	Storage Temperature	-55	+100	°C	1)2)

1) When V_{DD} and V_{DDQ} and V_{DDL} are less than 500 mV; V_{REF} may be equal to or less than 300 mV.

2) Storage Temperature is the case surface temperature on the center/top side of the DRAM.

Attention: Stresses greater than those listed under “Absolute Maximum Ratings” may cause permanent damage to the device. This is a stress rating only and functional operation of the device at these or any other conditions above those indicated in the operational sections of this specification is not implied. Exposure to absolute maximum rating conditions for extended periods may affect reliability.

TABLE 11
DRAM Component Operating Temperature Range

Symbol	Parameter	Rating		Unit	Note
		Min.	Max.		
T_{OPER}	Operating Temperature	0	95	°C	1)2)3)4)

1) Operating Temperature is the case surface temperature on the center / top side of the DRAM.

2) The operating temperature range are the temperatures where all DRAM specification will be supported. During operation, the DRAM case temperature must be maintained between 0 - 95 °C under all other specification parameters.

3) Above 85 °C the Auto-Refresh command interval has to be reduced to $t_{REFI} = 3.9 \mu s$

4) When operating this product in the 85 °C to 95 °C TCASE temperature range, the High Temperature Self Refresh has to be enabled by setting EMR(2) bit A7 to “1”. When the High Temperature Self Refresh is enabled there is an increase of I_{DD6} by approximately 50%



3.2 DC Characteristics

TABLE 12

Recommended DC Operating Conditions (SSTL_18)

Symbol	Parameter	Rating			Unit	Note
		Min.	Typ.	Max.		
V_{DD}	Supply Voltage	1.7	1.8	1.9	V	1)
V_{DDDL}	Supply Voltage for DLL	1.7	1.8	1.9	V	1)
V_{DDQ}	Supply Voltage for Output	1.7	1.8	1.9	V	1)
V_{REF}	Input Reference Voltage	$0.49 \times V_{DDQ}$	$0.5 \times V_{DDQ}$	$0.51 \times V_{DDQ}$	V	2)3)
V_{TT}	Termination Voltage	$V_{REF} - 0.04$	V_{REF}	$V_{REF} + 0.04$	V	4)

- V_{DDQ} tracks with V_{DD} , V_{DDDL} tracks with V_{DD} . AC parameters are measured with V_{DD} , V_{DDQ} and V_{DDDL} tied together.
- The value of V_{REF} may be selected by the user to provide optimum noise margin in the system. Typically the value of V_{REF} is expected to be about $0.5 \times V_{DDQ}$ of the transmitting device and V_{REF} is expected to track variations in V_{DDQ} .
- Peak to peak ac noise on V_{REF} may not exceed $\pm 2\% V_{REF}$ (dc)
- V_{TT} is not applied directly to the device. V_{TT} is a system supply for signal termination resistors, is expected to be set equal to V_{REF} , and must track variations in die dc level of V_{REF} .

TABLE 13

ODT DC Electrical Characteristics

Parameter / Condition	Symbol	Min.	Nom.	Max.	Unit	Note
Termination resistor impedance value for EMRS(1)[A6,A2] = [0,1]; 75 Ohm	Rtt1(eff)	60	75	90	Ω	1)
Termination resistor impedance value for EMRS(1)[A6,A2] =[1,0]; 150 Ohm	Rtt2(eff)	120	150	180	Ω	1)
Termination resistor impedance value for EMRS(1)(A6,A2)=[1,1]; 50 Ohm	Rtt3(eff)	40	50	60	Ω	1)
Deviation of V_M with respect to $V_{DDQ} / 2$	delta V_M	-6.00	—	+ 6.00	%	2)

- Measurement Definition for Rtt(eff): Apply $V_{IH(ac)}$ and $V_{IL(ac)}$ to test pin separately, then measure current $I(V_{IH(ac)})$ and $I(V_{IL(ac)})$ respectively.
 $Rtt(eff) = (V_{IH(ac)} - V_{IL(ac)}) / (I(V_{IH(ac)}) - I(V_{IL(ac)}))$.
- Measurement Definition for V_M : Turn ODT on and measure voltage (V_M) at test pin (midpoint) with no load: $delta V_M = ((2 \times V_M / V_{DDQ}) - 1) \times 100\%$

TABLE 14

Input and Output Leakage Currents

Symbol	Parameter / Condition	Min.	Max.	Unit	Note
IIL	Input Leakage Current; any input $0 V < V_{IN} < V_{DD}$	-2	+2	μA	1)
IOL	Output Leakage Current; $0 V < V_{OUT} < V_{DDQ}$	-5	+5	μA	2)

- All other pins not under test = 0 V
- DQ's, LDQS, \overline{LDQS} , UDQS, \overline{UDQS} , DQS, \overline{DQS} , RDQS, \overline{RDQS} are disabled and ODT is turned off

HYS72T[64/128]3x0HP-[3/3S/3.7/5]-B
240-Pin Registered DDR2 SDRAM**TABLE 15**
Input / Output Capacitance

Symbol	Parameter	Min.	Max.	Unit
CCK	Input capacitance, CK and \overline{CK}	1.0	2.0	pF
CDCK	Input capacitance delta, CK and \overline{CK}	—	0.25	pF
CI	Input capacitance, all other input-only pins	1.0	2.0	pF
CDI	Input capacitance delta, all other input-only pins	—	0.25	pF
CIO	Input/output capacitance, DQ, DM, \overline{DQS} , \overline{DQS} , RDQS, \overline{RDQS}	2.5	4.0	pF
CDIO	Input/output capacitance delta, DQ, DM, \overline{DQS} , \overline{DQS} , RDQS, \overline{RDQS}	—	0.5	pF



3.3 AC Characteristics

3.3.1 Speed Grade Definitions

All Speed grades faster than DDR2-400B comply with DDR2-400B timing specifications ($t_{CK} = 5\text{ns}$ with $t_{RAS} = 40\text{ns}$).

List of Speed Grade Definition tables:

- [Table 16 “Speed Grade Definition Speed Bins for DDR2-667” on Page 18](#)
- [Table 17 “Speed Grade Definition Speed Bins for DDR2-533 and DDR2-400” on Page 19](#)

TABLE 16

Speed Grade Definition Speed Bins for DDR2-667

Speed Grade		DDR2-667C		DDR2-667D		Unit	Note	
IFX Sort Name		-3		-3S				
CAS-RCD-RP latencies		4-4-4		5-5-5		t_{CK}		
Parameter	Symbol	Min.	Max.	Min.	Max.	—		
Clock Frequency	@ CL = 3	t_{CK}	5	8	5	8	ns	1)2)3)4)
	@ CL = 4	t_{CK}	3	8	3.75	8	ns	1)2)3)4)
	@ CL = 5	t_{CK}	3	8	3	8	ns	1)2)3)4)
Row Active Time	t_{RAS}	45	70000	45	70000	ns	1)2)3)4)5)	
Row Cycle Time	t_{RC}	57	—	60	—	ns	1)2)3)4)	
RAS-CAS-Delay	t_{RCD}	12	—	15	—	ns	1)2)3)4)	
Row Precharge Time	t_{RP}	12	—	15	—	ns	1)2)3)4)	

- 1) Timings are guaranteed with $\overline{CK}/\overline{CK}$ differential Slew Rate of 2.0 V/ns. For DQS signals timings are guaranteed with a differential Slew Rate of 2.0 V/ns in differential strobe mode and a Slew Rate of 1 V/ns in single ended mode. Timings are further guaranteed for normal OCD drive strength (EMRS(1) A1 = 0).
- 2) The $\overline{CK}/\overline{CK}$ input reference level (for timing reference to $\overline{CK}/\overline{CK}$) is the point at which CK and \overline{CK} cross. The $\overline{DQS} / \overline{DQS}$, $\overline{RDQS} / \overline{RDQS}$, input reference level is the crosspoint when in differential strobe mode
- 3) Inputs are not recognized as valid until V_{REF} stabilizes. During the period before V_{REF} stabilizes, $CKE = 0.2 \times V_{DDQ}$ is recognized as low.
- 4) The output timing reference voltage level is V_{TT} .
- 5) $t_{RAS,MAX}$ is calculated from the maximum amount of time a DDR2 device can operate without a refresh command which is equal to $9 \times t_{REFI}$.



TABLE 17
Speed Grade Definition Speed Bins for DDR2-533 and DDR2-400

Speed Grade		DDR2-533C		DDR2-400B		Unit	Note	
IFX Sort Name		-3.7		-5				
CAS-RCD-RP latencies		4-4-4		3-3-3		t_{CK}		
Parameter	Symbol	Min.	Max.	Min.	Max.	—		
Clock Frequency	@ CL = 3	t_{CK}	5	8	5	8	ns	1)2)3)4)
	@ CL = 4	t_{CK}	3.75	8	5	8	ns	1)2)3)4)
	@ CL = 5	t_{CK}	3.75	8	5	8	ns	1)2)3)4)
Row Active Time	t_{RAS}	45	70000	40	70000	ns	1)2)3)4)5)	
Row Cycle Time	t_{RC}	60	—	55	—	ns	1)2)3)4)	
RAS-CAS-Delay	t_{RCD}	15	—	15	—	ns	1)2)3)4)	
Row Precharge Time	t_{RP}	15	—	15	—	ns	1)2)3)4)	

- 1) Timings are guaranteed with $\overline{CK}/\overline{CK}$ differential Slew Rate of 2.0 V/ns. For DQS signals timings are guaranteed with a differential Slew Rate of 2.0 V/ns in differential strobe mode and a Slew Rate of 1 V/ns in single ended mode. Timings are further guaranteed for normal OCD drive strength (EMRS(1) A1 = 0) only.
- 2) The $\overline{CK}/\overline{CK}$ input reference level (for timing reference to $\overline{CK}/\overline{CK}$) is the point at which \overline{CK} and \overline{CK} cross. The $\overline{DQS} / \overline{DQS}$, $\overline{RDQS} / \overline{RDQS}$, input reference level is the crosspoint when in differential strobe mode
- 3) Inputs are not recognized as valid until V_{REF} stabilizes. During the period before V_{REF} stabilizes, $CKE = 0.2 \times V_{DDQ}$ is recognized as low.
- 4) The output timing reference voltage level is V_{TT} .
- 5) $t_{RAS,MAX}$ is calculated from the maximum amount of time a DDR2 device can operate without a refresh command which is equal to $9 \times t_{REFI}$.



3.3.2 AC Timing Parameters

List of AC timing parameter tables.

- Table 18 “DRAM Component Timing Parameter by Speed Grade - DDR2-667” on Page 20
- Table 19 “DRAM Component Timing Parameter by Speed Grade - DDR2-533” on Page 24
- Table 20 “DRAM Component Timing Parameter by Speed Grade - DDR2-400” on Page 26

TABLE 18

DRAM Component Timing Parameter by Speed Grade - DDR2-667

Parameter	Symbol	DDR2-667		Unit	Note ¹⁾²⁾³⁾⁴⁾⁵⁾⁶⁾⁷⁾⁸⁾
		Min.	Max.		
DQ output access time from CK / $\overline{\text{CK}}$	t_{AC}	-450	+450	ps	9)
DQS output access time from CK / $\overline{\text{CK}}$	$t_{DQ\text{SCK}}$	-400	+400	ps	9)
Average clock high pulse width	$t_{CH.AVG}$	0.48	0.52	$t_{CK.AVG}$	10)11)
Average clock low pulse width	$t_{CL.AVG}$	0.48	0.52	$t_{CK.AVG}$	10)11)
Average clock period	$t_{CK.AVG}$	3000	8000	ps	
DQ and DM input setup time	$t_{DS.BASE}$	100	—	ps	12)13)14)
DQ and DM input hold time	$t_{DH.BASE}$	175	—	ps	13)14)15)
Control & address input pulse width for each input	t_{IPW}	0.6	—	$t_{CK.AVG}$	
DQ and DM input pulse width for each input	t_{DIPW}	0.35	—	$t_{CK.AVG}$	
Data-out high-impedance time from CK / $\overline{\text{CK}}$	t_{HZ}	—	$t_{AC.MAX}$	ps	9)16)
DQS/DQS low-impedance time from CK / $\overline{\text{CK}}$	$t_{LZ.DQS}$	$t_{AC.MIN}$	$t_{AC.MAX}$	ps	9)16)
DQ low impedance time from CK/ $\overline{\text{CK}}$	$t_{LZ.DQ}$	$2 \times t_{AC.MIN}$	$t_{AC.MAX}$	ps	9)16)
DQS-DQ skew for DQS & associated DQ signals	t_{DQSQ}	—	240	ps	17)
CK half pulse width	t_{HP}	$\text{Min}(t_{CH.ABS}, t_{CL.ABS})$	—	ps	18)
DQ hold skew factor	t_{QHS}	—	340	ps	19)
DQ/DQS output hold time from DQS	t_{QH}	$t_{HP} - t_{QHS}$	—	ps	20)
Write command to DQS associated clock edges	WL	RL-1		nCK	
DQS latching rising transition to associated clock edges	t_{DQSS}	- 0.25	+ 0.25	$t_{CK.AVG}$	21)
DQS input high pulse width	t_{DQSH}	0.35	—	$t_{CK.AVG}$	
DQS input low pulse width	t_{DQSL}	0.35	—	$t_{CK.AVG}$	
DQS falling edge to CK setup time	t_{DSS}	0.2	—	$t_{CK.AVG}$	21)
DQS falling edge hold time from CK	t_{DSH}	0.2	—	$t_{CK.AVG}$	21)
Write postamble	t_{WPST}	0.4	0.6	$t_{CK.AVG}$	
Write preamble	t_{WPRE}	0.35	—	$t_{CK.AVG}$	
Address and control input setup time	$t_{IS.BASE}$	200	—	ps	22)23)
Address and control input hold time	$t_{IH.BASE}$	275	—	ps	23)24)
Read preamble	t_{RPRE}	0.9	1.1	$t_{CK.AVG}$	25)26)
Read postamble	t_{RPST}	0.4	0.6	$t_{CK.AVG}$	25)27)
CAS to CAS command delay	t_{CCD}	2	—	nCK	
Write recovery time	t_{WR}	15	—	ns	1)



HYS72T[64/128]3x0HP-[3/3S/3.7/5]-B
240-Pin Registered DDR2 SDRAM

Parameter	Symbol	DDR2-667		Unit	Note 1)2)3)4)5)6)7)8)
		Min.	Max.		
Auto-Precharge write recovery + precharge time	t_{DAL}	WR + t_{nRP}	—	nCK	28)29)
Internal write to read command delay	t_{WTR}	7.5	—	ns	1)30)
Internal Read to Precharge command delay	t_{RTP}	7.5	—	ns	1)
Exit self-refresh to a non-read command	t_{XSNR}	$t_{RFC} + 10$	—	ns	1)
Exit self-refresh to read command	t_{XSRD}	200	—	nCK	
Exit precharge power-down to any valid command (other than NOP or Deselect)	t_{XP}	2	—	nCK	
Exit power down to read command	t_{XARD}	2	—	nCK	
Exit active power-down mode to read command (slow exit, lower power)	t_{XARDS}	7 – AL	—	nCK	
CKE minimum pulse width (high and low pulse width)	t_{CKE}	3	—	nCK	31)
Mode register set command cycle time	t_{MRD}	2	—	nCK	
MRS command to ODT update delay	t_{MOD}	0	12	ns	28)
OCD drive mode output delay	t_{OIT}	0	12	ns	28)
Minimum time clocks remain ON after CKE asynchronously drops LOW	t_{DELAY}	$t_{IS} + t_{CK.AVG} + t_{IH}$	—	ns	

- 1) For details and notes see the relevant Qimonda component data sheet
- 2) $V_{DDQ} = 1.8 V \pm 0.1V$; $V_{DD} = 1.8 V \pm 0.1 V$. See notes 5)6)7)8)
- 3) Timing that is not specified is illegal and after such an event, in order to guarantee proper operation, the DRAM must be powered down and then restarted through the specified initialization sequence before normal operation can continue.
- 4) Timings are guaranteed with CK/CK differential Slew Rate of 2.0 V/ns. For DQS signals timings are guaranteed with a differential Slew Rate of 2.0 V/ns in differential strobe mode and a Slew Rate of 1 V/ns in single ended mode.
- 5) The CK / CK input reference level (for timing reference to CK / CK) is the point at which CK and CK cross. The DQS / DQS, RDQS / RDQS, input reference level is the crosspoint when in differential strobe mode.
- 6) Inputs are not recognized as valid until V_{REF} stabilizes. During the period before V_{REF} stabilizes, $CKE = 0.2 \times V_{DDQ}$ is recognized as low.
- 7) The output timing reference voltage level is V_{TT} .
- 8) New units, ' $t_{CK.AVG}$ ' and 'nCK', are introduced in DDR2-667 and DDR2-800. Unit ' $t_{CK.AVG}$ ' represents the actual $t_{CK.AVG}$ of the input clock under operation. Unit 'nCK' represents one clock cycle of the input clock, counting the actual clock edges. Note that in DDR2-400 and DDR2-533, ' t_{CK} ' is used for both concepts. Example: $t_{XP} = 2$ [nCK] means; if Power Down exit is registered at T_m , an Active command may be registered at $T_m + 2$, even if $(T_m + 2 - T_m)$ is $2 \times t_{CK.AVG} + t_{ERR.2PER(MIN)}$.
- 9) When the device is operated with input clock jitter, this parameter needs to be derated by the actual $t_{ERR(6-10per)}$ of the input clock. (output deratings are relative to the SDRAM input clock.) For example, if the measured jitter into a DDR2-667 SDRAM has $t_{ERR(6-10PER).MIN} = -272$ ps and $t_{ERR(6-10PER).MAX} = +293$ ps, then $t_{DQCK.MIN(DERATED)} = t_{DQCK.MIN} - t_{ERR(6-10PER).MAX} = -400$ ps - 293 ps = -693 ps and $t_{DQCK.MAX(DERATED)} = t_{DQCK.MAX} - t_{ERR(6-10PER).MIN} = 400$ ps + 272 ps = +672 ps. Similarly, $t_{LZ.DQ}$ for DDR2-667 derates to $t_{LZ.DQ.MIN(DERATED)} = -900$ ps - 293 ps = -1193 ps and $t_{LZ.DQ.MAX(DERATED)} = 450$ ps + 272 ps = +722 ps. (Caution on the MIN/MAX usage!)
- 10) Input clock jitter spec parameter. These parameters are referred to as 'input clock jitter spec parameters' and these parameters apply to DDR2-667 and DDR2-800 only. The jitter specified is a random jitter meeting a Gaussian distribution.
- 11) These parameters are specified per their average values, however it is understood that the relationship between the average timing and the absolute instantaneous timing holds all the times (min. and max of SPEC values are to be used for calculations).
- 12) Input waveform timing t_{DS} with differential data strobe enabled MR[bit10] = 0, is referenced from the input signal crossing at the $V_{IH.AC}$ level to the differential data strobe crosspoint for a rising signal, and from the input signal crossing at the $V_{IL.AC}$ level to the differential data strobe crosspoint for a falling signal applied to the device under test. DQS, DQS signals must be monotonic between $V_{i(DC).MAX}$ and $V_{i(DC).MIN}$. See **Figure 3**.
- 13) If t_{DS} or t_{DH} is violated, data corruption may occur and the data must be re-written with valid data before a valid READ can be executed.
- 14) These parameters are measured from a data signal ((L/U)DM, (L/U)DQ0, (L/U)DQ1, etc.) transition edge to its respective data strobe signal ((L/U/R)DQS / DQS) crossing.

HYS72T[64/128]3x0HP-[3/3S/3.7/5]-B
240-Pin Registered DDR2 SDRAM

- 15) Input waveform timing t_{DH} with differential data strobe enabled MR[bit10] = 0, is referenced from the differential data strobe crosspoint to the input signal crossing at the $V_{IH,DC}$ level for a falling signal and from the differential data strobe crosspoint to the input signal crossing at the $V_{IL,DC}$ level for a rising signal applied to the device under test. DQS, DQS signals must be monotonic between $V_{IL,DC,MAX}$ and $V_{IH,DC,MIN}$. See **Figure 3**.
- 16) t_{HZ} and t_{LZ} transitions occur in the same access time as valid data transitions. These parameters are referenced to a specific voltage level which specifies when the device output is no longer driving (t_{HZ}), or begins driving (t_{LZ}).
- 17) t_{DQSQ} : Consists of data pin skew and output pattern effects, and p-channel to n-channel variation of the output drivers as well as output slew rate mismatch between DQS / \overline{DQS} and associated DQ in any given cycle.
- 18) t_{HP} is the minimum of the absolute half period of the actual input clock. t_{HP} is an input parameter but not an input specification parameter. It is used in conjunction with t_{QHS} to derive the DRAM output timing t_{QH} . The value to be used for t_{QH} calculation is determined by the following equation; $t_{HP} = \text{MIN}(t_{CH,ABS}, t_{CL,ABS})$, where, $t_{CH,ABS}$ is the minimum of the actual instantaneous clock high time; $t_{CL,ABS}$ is the minimum of the actual instantaneous clock low time.
- 19) t_{QHS} accounts for: 1) The pulse duration distortion of on-chip clock circuits, which represents how well the actual t_{HP} at the input is transferred to the output; and 2) The worst case push-out of DQS on one transition followed by the worst case pull-in of DQ on the next transition, both of which are independent of each other, due to data pin skew, output pattern effects, and pchannel to n-channel variation of the output drivers.
- 20) $t_{QH} = t_{HP} - t_{QHS}$, where: t_{HP} is the minimum of the absolute half period of the actual input clock; and t_{QHS} is the specification value under the max column. {The less half-pulse width distortion present, the larger the t_{QH} value is; and the larger the valid data eye will be.} Examples: 1) If the system provides t_{HP} of 1315 ps into a DDR2-667 SDRAM, the DRAM provides t_{QH} of 975 ps minimum. 2) If the system provides t_{HP} of 1420 ps into a DDR2-667 SDRAM, the DRAM provides t_{QH} of 1080 ps minimum.
- 21) These parameters are measured from a data strobe signal ((L/U/R)DQS / \overline{DQS}) crossing to its respective clock signal (CK / \overline{CK}) crossing. The spec values are not affected by the amount of clock jitter applied (i.e. $t_{JIT,PER}$, $t_{JIT,CC}$, etc.), as these are relative to the clock signal crossing. That is, these parameters should be met whether clock jitter is present or not.
- 22) Input waveform timing is referenced from the input signal crossing at the $V_{IH,AC}$ level for a rising signal and $V_{IL,AC}$ for a falling signal applied to the device under test. See **Figure 4**.
- 23) These parameters are measured from a command/address signal (CKE, CS, RAS, CAS, WE, ODT, BA0, A0, A1, etc.) transition edge to its respective clock signal (CK / \overline{CK}) crossing. The spec values are not affected by the amount of clock jitter applied (i.e. $t_{JIT,PER}$, $t_{JIT,CC}$, etc.), as the setup and hold are relative to the clock signal crossing that latches the command/address. That is, these parameters should be met whether clock jitter is present or not.
- 24) Input waveform timing is referenced from the input signal crossing at the $V_{IL,DC}$ level for a rising signal and $V_{IH,DC}$ for a falling signal applied to the device under test. See **Figure 4**.
- 25) t_{RPST} end point and t_{RPRE} begin point are not referenced to a specific voltage level but specify when the device output is no longer driving (t_{RPST}), or begins driving (t_{RPRE}). **Figure 2** shows a method to calculate these points when the device is no longer driving (t_{RPST}), or begins driving (t_{RPRE}) by measuring the signal at two different voltages. The actual voltage measurement points are not critical as long as the calculation is consistent.
- 26) When the device is operated with input clock jitter, this parameter needs to be derated by the actual $t_{JIT,PER}$ of the input clock. (output deratings are relative to the SDRAM input clock.) For example, if the measured jitter into a DDR2-667 SDRAM has $t_{JIT,PER,MIN} = -72$ ps and $t_{JIT,PER,MAX} = +93$ ps, then $t_{RPRE,MIN(DERATED)} = t_{RPRE,MIN} + t_{JIT,PER,MIN} = 0.9 \times t_{CK,AVG} - 72$ ps = + 2178 ps and $t_{RPRE,MAX(DERATED)} = t_{RPRE,MAX} + t_{JIT,PER,MAX} = 1.1 \times t_{CK,AVG} + 93$ ps = + 2843 ps. (Caution on the MIN/MAX usage!).
- 27) When the device is operated with input clock jitter, this parameter needs to be derated by the actual $t_{JIT,DUTY}$ of the input clock. (output deratings are relative to the SDRAM input clock.) For example, if the measured jitter into a DDR2-667 SDRAM has $t_{JIT,DUTY,MIN} = -72$ ps and $t_{JIT,DUTY,MAX} = +93$ ps, then $t_{RPST,MIN(DERATED)} = t_{RPST,MIN} + t_{JIT,DUTY,MIN} = 0.4 \times t_{CK,AVG} - 72$ ps = + 928 ps and $t_{RPST,MAX(DERATED)} = t_{RPST,MAX} + t_{JIT,DUTY,MAX} = 0.6 \times t_{CK,AVG} + 93$ ps = + 1592 ps. (Caution on the MIN/MAX usage!).
- 28) $DAL = WR + RU\{t_{RP}(ns) / t_{CK}(ns)\}$, where RU stands for round up. WR refers to the tWR parameter stored in the MRS. For t_{RP} , if the result of the division is not already an integer, round up to the next highest integer. t_{CK} refers to the application clock period. Example: For DDR2-533 at $t_{CK} = 3.75$ ns with t_{WR} programmed to 4 clocks. $t_{DAL} = 4 + (15 \text{ ns} / 3.75 \text{ ns}) \text{ clocks} = 4 + (4) \text{ clocks} = 8 \text{ clocks}$.
- 29) $t_{DAL,nCK} = WR [nCK] + t_{nRP,nCK} = WR + RU\{t_{RP} [ps] / t_{CK,AVG} [ps]\}$, where WR is the value programmed in the EMR.
- 30) t_{WTR} is at least two clocks ($2 \times t_{CK}$) independent of operation frequency.
- 31) $t_{CKE,MIN}$ of 3 clocks means CKE must be registered on three consecutive positive clock edges. CKE must remain at the valid input level the entire time it takes to achieve the 3 clocks of registration. Thus, after any CKE transition, CKE may not transition from its valid level during the time period of $t_{IS} + 2 \times t_{CK} + t_{IH}$.



FIGURE 2

Method for calculating transitions and endpoint

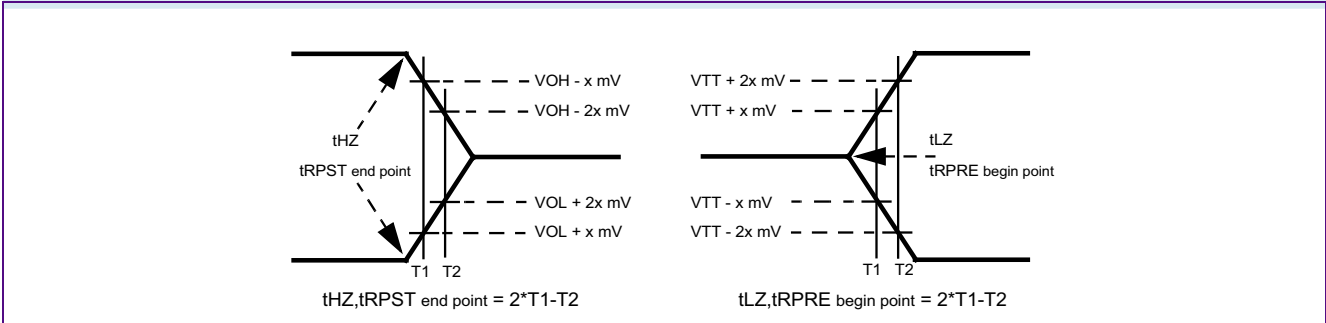


FIGURE 3

Differential input waveform timing - t_{DS} and t_{DH}

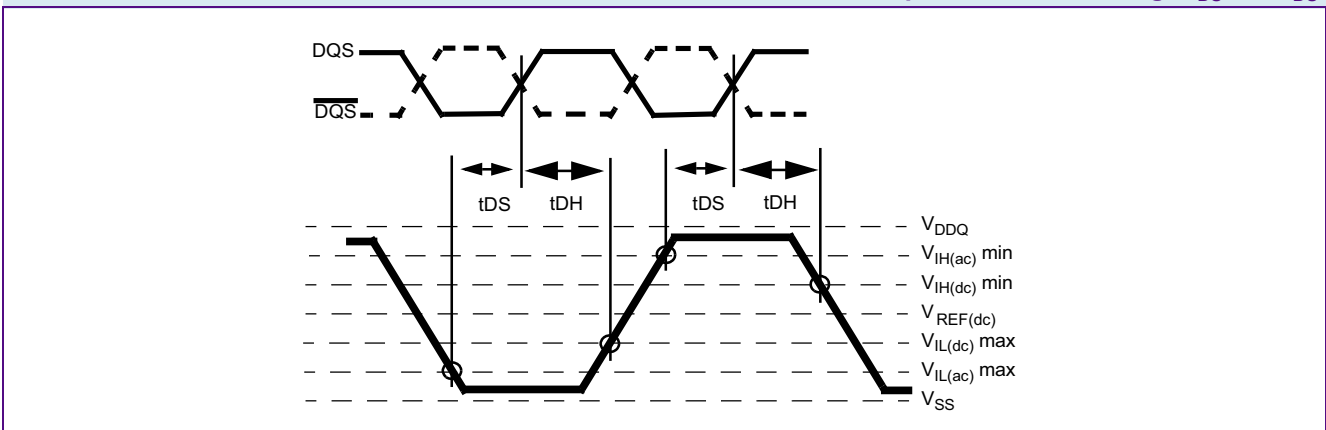


FIGURE 4

Differential input waveform timing - t_{IS} and t_{IH}

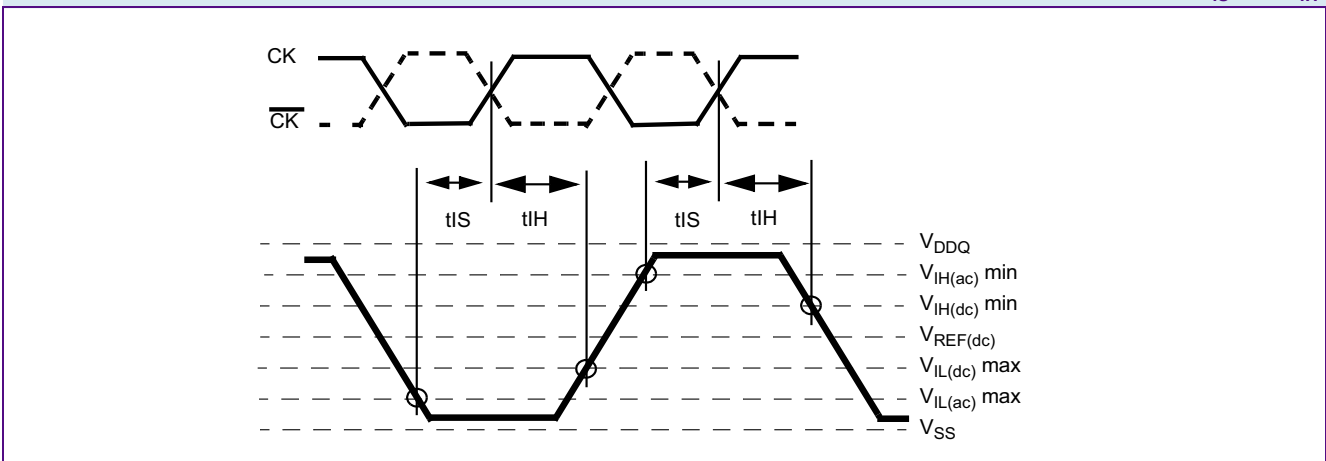




TABLE 19
DRAM Component Timing Parameter by Speed Grade - DDR2-533

Parameter	Symbol	DDR2-533		Unit	Note ¹⁾²⁾³⁾⁴⁾⁵⁾⁶⁾⁷⁾
		Min.	Max.		
DQ output access time from CK / $\overline{\text{CK}}$	t_{AC}	-500	+500	ps	
CAS A to $\overline{\text{CAS}}$ B command period	t_{CCD}	2	—	t_{CK}	
CK, $\overline{\text{CK}}$ high-level width	t_{CH}	0.45	0.55	t_{CK}	
CKE minimum high and low pulse width	t_{CKE}	3	—	t_{CK}	
CK, $\overline{\text{CK}}$ low-level width	t_{CL}	0.45	0.55	t_{CK}	
Auto-Precharge write recovery + precharge time	t_{DAL}	WR + t_{RP}	—	t_{CK}	8)18)
Minimum time clocks remain ON after CKE asynchronously drops LOW	t_{DELAY}	$t_{IS} + t_{CK} + t_{IH}$	—	ns	9)
DQ and DM input hold time (differential data strobe)	$t_{DH}(\text{base})$	225	—	ps	10)
DQ and DM input hold time (single ended data strobe)	$t_{DH1}(\text{base})$	-25	—	ps	11)
DQ and DM input pulse width (each input)	t_{DIPW}	0.35	—	t_{CK}	
DQS output access time from CK / $\overline{\text{CK}}$	t_{DQSCK}	-450	+450	ps	
DQS input low (high) pulse width (write cycle)	$t_{DQSL,H}$	0.35	—	t_{CK}	
DQS-DQ skew (for DQS & associated DQ signals)	t_{DQSQ}	—	300	ps	11)
Write command to 1st DQS latching transition	t_{DQSS}	- 0.25	+ 0.25	t_{CK}	
DQ and DM input setup time (differential data strobe)	$t_{DS}(\text{base})$	100	—	ps	11)
DQ and DM input setup time (single ended data strobe)	$t_{DS1}(\text{base})$	-25	—	ps	11)
DQS falling edge hold time from CK (write cycle)	t_{DSH}	0.2	—	t_{CK}	
DQS falling edge to CK setup time (write cycle)	t_{DSS}	0.2	—	t_{CK}	
Clock half period	t_{HP}	MIN. (t_{CL}, t_{CH})		—	12)
Data-out high-impedance time from CK / $\overline{\text{CK}}$	t_{HZ}	—	$t_{AC,MAX}$	ps	13)
Address and control input hold time	$t_{IH}(\text{base})$	375	—	ps	11)
Address and control input pulse width (each input)	t_{IPW}	0.6	—	t_{CK}	
Address and control input setup time	$t_{IS}(\text{base})$	250	—	ps	11)
DQ low-impedance time from CK / $\overline{\text{CK}}$	$t_{LZ(DQ)}$	$2 \times t_{AC,MIN}$	$t_{AC,MAX}$	ps	14)
DQS low-impedance from CK / $\overline{\text{CK}}$	$t_{LZ(DQS)}$	$t_{AC,MIN}$	$t_{AC,MAX}$	ps	14)
Mode register set command cycle time	t_{MRD}	2	—	t_{CK}	
OCD drive mode output delay	t_{OIT}	0	12	ns	
Data output hold time from DQS	t_{QH}	$t_{HP} - t_{QHS}$	—	—	
Data hold skew factor	t_{QHS}	—	400	ps	



HYS72T[64/128]3x0HP-[3/3S/3.7/5]-B
240-Pin Registered DDR2 SDRAM

Parameter	Symbol	DDR2-533		Unit	Note ¹⁾²⁾³⁾⁴⁾⁵⁾⁶⁾⁷⁾
		Min.	Max.		
Average periodic refresh Interval	t_{REFI}	—	7.8	μs	14)15)
		—	3.9	μs	16)18)
Auto-Refresh to Active/Auto-Refresh command period	t_{RFC}	105	—	ns	17)
Precharge-All (4 banks) command period	t_{RP}	$t_{RP} + 1t_{CK}$	—	ns	
Precharge-All (8 banks) command period	t_{RP}	$15 + 1t_{CK}$	—	ns	
Read preamble	t_{RPRE}	0.9	1.1	t_{CK}	14)
Read postamble	t_{RPST}	0.40	0.60	t_{CK}	14)
Active bank A to Active bank B command period	t_{RRD}	7.5	—	ns	14)18)
		10	—	ns	16)20)
Internal Read to Precharge command delay	t_{RTP}	7.5	—	ns	
Write preamble	t_{WPRE}	$0.25 \times t_{CK}$	—	t_{CK}	
Write postamble	t_{WPST}	0.40	0.60	t_{CK}	19)
Write recovery time for write without Auto-Precharge	t_{WR}	15	—	ns	
Write recovery time for write with Auto-Precharge	WR	t_{WR}/t_{CK}	—	t_{CK}	20)
Internal Write to Read command delay	t_{WTR}	7.5	—	ns	21)
Exit power down to any valid command (other than NOP or Deselect)	t_{XARD}	2	—	t_{CK}	22)
Exit active power-down mode to Read command (slow exit, lower power)	t_{XARDS}	6 – AL	—	t_{CK}	22)
Exit precharge power-down to any valid command (other than NOP or Deselect)	t_{XP}	2	—	t_{CK}	
Exit Self-Refresh to non-Read command	t_{XSNR}	$t_{RFC} + 10$	—	ns	
Exit Self-Refresh to Read command	t_{XSRD}	200	—	t_{CK}	

- 1) For details and notes see the relevant Qimonda component data sheet
- 2) $V_{DDQ} = 1.8 \text{ V} \pm 0.1 \text{ V}$; $V_{DD} = 1.8 \text{ V} \pm 0.1 \text{ V}$. See notes ⁵⁾⁶⁾⁷⁾⁸⁾
- 3) Timing that is not specified is illegal and after such an event, in order to guarantee proper operation, the DRAM must be powered down and then restarted through the specified initialization sequence before normal operation can continue.
- 4) Timings are guaranteed with CK/ $\overline{\text{CK}}$ differential Slew Rate of 2.0 V/ns. For DQS signals timings are guaranteed with a differential Slew Rate of 2.0 V/ns in differential strobe mode and a Slew Rate of 1 V/ns in single ended mode.
- 5) The CK / $\overline{\text{CK}}$ input reference level (for timing reference to CK / $\overline{\text{CK}}$) is the point at which CK and $\overline{\text{CK}}$ cross. The DQS / $\overline{\text{DQS}}$, RDQS / $\overline{\text{RDQS}}$, input reference level is the crosspoint when in differential strobe mode.
- 6) Inputs are not recognized as valid until V_{REF} stabilizes. During the period before V_{REF} stabilizes, $\text{CKE} = 0.2 \times V_{DDQ}$ is recognized as low.
- 7) The output timing reference voltage level is V_{TT} .
- 8) For each of the terms, if not already an integer, round to the next highest integer. t_{CK} refers to the application clock period. WR refers to the WR parameter stored in the MR.
- 9) The clock frequency is allowed to change during self-refresh mode or precharge power-down mode.
- 10) For timing definition, refer to the Component data sheet.
- 11) Consists of data pin skew and output pattern effects, and p-channel to n-channel variation of the output drivers as well as output Slew Rate mis-match between DQS / $\overline{\text{DQS}}$ and associated DQ in any given cycle.
- 12) MIN (t_{CL} , t_{CH}) refers to the smaller of the actual clock low time and the actual clock high time as provided to the device (i.e. this value can be greater than the minimum specification limits for t_{CL} and t_{CH}).



HYS72T[64/128]3x0HP-[3/3S/3.7/5]-B
240-Pin Registered DDR2 SDRAM

- 13) The t_{HZ} , t_{RPST} and t_{LZ} , t_{RPRE} parameters are referenced to a specific voltage level, which specify when the device output is no longer driving (t_{HZ} , t_{RPST}), or begins driving (t_{LZ} , t_{RPRE}). t_{HZ} and t_{LZ} transitions occur in the same access time windows as valid data transitions. These parameters are verified by design and characterization, but not subject to production test.
- 14) The Auto-Refresh command interval has been reduced to 3.9 μ s when operating the DDR2 DRAM in a temperature range between 85 °C and 95 °C.
- 15) $0\text{ }^{\circ}\text{C} \leq T_{CASE} \leq 85\text{ }^{\circ}\text{C}$
- 16) $85\text{ }^{\circ}\text{C} < T_{CASE} \leq 95\text{ }^{\circ}\text{C}$
- 17) A maximum of eight Auto-Refresh commands can be posted to any given DDR2 SDRAM device.
- 18) The t_{RRD} timing parameter depends on the page size of the DRAM organization. See **Table 4 “Ordering Information for RoHS Compliant Products” on Page 5.**
- 19) The maximum limit for the t_{WPST} parameter is not a device limit. The device operates with a greater value for this parameter, but system performance (bus turnaround) degrades accordingly.
- 20) WR must be programmed to fulfill the minimum requirement for the t_{WR} timing parameter, where $WR_{MIN}[\text{cycles}] = t_{WR}(\text{ns})/t_{CK}(\text{ns})$ rounded up to the next integer value. $t_{DAL} = WR + (t_{RP}/t_{CK})$. For each of the terms, if not already an integer, round to the next highest integer. t_{CK} refers to the application clock period. WR refers to the WR parameter stored in the MRS.
- 21) Minimum t_{WTR} is two clocks when operating the DDR2-SDRAM at frequencies ≤ 200 MHz.
- 22) User can choose two different active power-down modes for additional power saving via MRS address bit A12. In “standard active power-down mode” (MR, A12 = “0”) a fast power-down exit timing t_{XARD} can be used. In “low active power-down mode” (MR, A12 = “1”) a slow power-down exit timing t_{XARDS} has to be satisfied.

TABLE 20
DRAM Component Timing Parameter by Speed Grade - DDR2-400

Parameter	Symbol	DDR2-400		Unit	Note ¹⁾²⁾³⁾⁴⁾⁵⁾⁶⁾⁷⁾
		Min.	Max.		
DQ output access time from CK / $\overline{\text{CK}}$	t_{AC}	-600	+600	ps	
CAS A to $\overline{\text{CAS}}$ B command period	t_{CCD}	2	—	t_{CK}	
CK, $\overline{\text{CK}}$ high-level width	t_{CH}	0.45	0.55	t_{CK}	
CKE minimum high and low pulse width	t_{CKE}	3	—	t_{CK}	
CK, $\overline{\text{CK}}$ low-level width	t_{CL}	0.45	0.55	t_{CK}	
Auto-Precharge write recovery + precharge time	t_{DAL}	$WR + t_{RP}$	—	t_{CK}	8)22)
Minimum time clocks remain ON after CKE asynchronously drops LOW	t_{DELAY}	$t_{IS} + t_{CK} + t_{IH}$	—	ns	9)
DQ and DM input hold time (differential data strobe)	$t_{DH}(\text{base})$	275	—	ps	10)
DQ and DM input hold time (single ended data strobe)	$t_{DH1}(\text{base})$	-25	—	ps	11)
DQ and DM input pulse width (each input)	t_{DIPW}	0.35	—	t_{CK}	
DQS output access time from CK / $\overline{\text{CK}}$	t_{DQSCK}	-500	+500	ps	
DQS input low (high) pulse width (write cycle)	$t_{DQSL,H}$	0.35	—	t_{CK}	
DQS-DQ skew (for DQS & associated DQ signals)	t_{DQSQ}	—	350	ps	11)
Write command to 1st DQS latching transition	t_{DQSS}	- 0.25	+ 0.25	t_{CK}	
DQ and DM input setup time (differential data strobe)	$t_{DS}(\text{base})$	150	—	ps	11)
DQ and DM input setup time (single ended data strobe)	$t_{DS1}(\text{base})$	-25	—	ps	11)



HYS72T[64/128]3x0HP-[3/3S/3.7/5]-B
240-Pin Registered DDR2 SDRAM

Parameter	Symbol	DDR2-400		Unit	Note ¹⁾²⁾³⁾⁴⁾⁵⁾⁶⁾⁷⁾
		Min.	Max.		
DQS falling edge hold time from CK (write cycle)	t_{DSH}	0.2	—	t_{CK}	
DQS falling edge to CK setup time (write cycle)	t_{DSS}	0.2	—	t_{CK}	
Clock half period	t_{HP}	MIN. (t_{CL} , t_{CH})			12)
Data-out high-impedance time from CK / \overline{CK}	t_{HZ}	—	$t_{AC.MAX}$	ps	13)
Address and control input hold time	$t_{IH}(base)$	475	—	ps	11)
Address and control input pulse width (each input)	t_{IPW}	0.6	—	t_{CK}	
Address and control input setup time	$t_{IS}(base)$	350	—	ps	11)
DQ low-impedance time from CK / \overline{CK}	$t_{LZ}(DQ)$	$2 \times t_{AC.MIN}$	$t_{AC.MAX}$	ps	14)
DQS low-impedance from CK / \overline{CK}	$t_{LZ}(DQS)$	$t_{AC.MIN}$	$t_{AC.MAX}$	ps	14)
Mode register set command cycle time	t_{MRD}	2	—	t_{CK}	
OCD drive mode output delay	t_{OIT}	0	12	ns	
Data output hold time from DQS	t_{QH}	$t_{HP} - t_{QHS}$	—	—	
Data hold skew factor	t_{QHS}	—	450	ps	
Average periodic refresh Interval	t_{REFI}	—	7.8	μs	14)15)
		—	3.9	μs	16)18)
Auto-Refresh to Active/Auto-Refresh command period		105	—	ns	17)
Precharge-All (4 banks) command period	t_{RP}	$t_{RP} + 1t_{CK}$	—	ns	
Precharge-All (8 banks) command period	t_{RP}	$15 + 1t_{CK}$	—	ns	
Read preamble	t_{RPRE}	0.9	1.1	t_{CK}	14)
Read postamble	t_{RPST}	0.40	0.60	t_{CK}	14)
Active bank A to Active bank B command period	t_{RRD}	7.5	—	ns	14)18)
		10	—	ns	16)20)
Internal Read to Precharge command delay	t_{RTP}	7.5	—	ns	
Write preamble	t_{WPRE}	$0.25 \times t_{CK}$	—	t_{CK}	
Write postamble	t_{WPST}	0.40	0.60	t_{CK}	19)
Write recovery time for write without Auto-Precharge	t_{WR}	15	—	ns	
Write recovery time for write with Auto-Precharge	WR	t_{WR}/t_{CK}	—	t_{CK}	20)
Internal Write to Read command delay	t_{WTR}	10	—	ns	21)
Exit power down to any valid command (other than NOP or Deselect)	t_{XARD}	2	—	t_{CK}	22)
Exit active power-down mode to Read command (slow exit, lower power)	t_{XARDS}	6 – AL	—	t_{CK}	22)
Exit precharge power-down to any valid command (other than NOP or Deselect)	t_{XP}	2	—	t_{CK}	
Exit Self-Refresh to non-Read command	t_{XSNR}	$t_{RFC} + 10$	—	ns	
Exit Self-Refresh to Read command	t_{XSRD}	200	—	t_{CK}	

HYS72T[64/128]3x0HP-[3/3S/3.7/5]-B
240-Pin Registered DDR2 SDRAM

- 1) For details and notes see the relevant Qimonda component data sheet
- 2) $V_{DDQ} = 1.8 \text{ V} \pm 0.1 \text{ V}$; $V_{DD} = 1.8 \text{ V} \pm 0.1 \text{ V}$. See notes ⁵⁾⁶⁾⁷⁾⁸⁾
- 3) Timing that is not specified is illegal and after such an event, in order to guarantee proper operation, the DRAM must be powered down and then restarted through the specified initialization sequence before normal operation can continue.
- 4) Timings are guaranteed with CK/ $\overline{\text{CK}}$ differential Slew Rate of 2.0 V/ns. For DQS signals timings are guaranteed with a differential Slew Rate of 2.0 V/ns in differential strobe mode and a Slew Rate of 1 V/ns in single ended mode.
- 5) The CK / $\overline{\text{CK}}$ input reference level (for timing reference to CK / $\overline{\text{CK}}$) is the point at which CK and $\overline{\text{CK}}$ cross. The DQS / $\overline{\text{DQS}}$, RDQS / $\overline{\text{RDQS}}$, input reference level is the crosspoint when in differential strobe mode.
- 6) Inputs are not recognized as valid until V_{REF} stabilizes. During the period before V_{REF} stabilizes, $\text{CKE} = 0.2 \times V_{DDQ}$ is recognized as low.
- 7) The output timing reference voltage level is V_{TT} .
- 8) For each of the terms, if not already an integer, round to the next highest integer. t_{CK} refers to the application clock period. WR refers to the WR parameter stored in the MR.
- 9) The clock frequency is allowed to change during self-refresh mode or precharge power-down mode.
- 10) For timing definition, refer to the Component data sheet.
- 11) Consists of data pin skew and output pattern effects, and p-channel to n-channel variation of the output drivers as well as output Slew Rate mis-match between DQS / $\overline{\text{DQS}}$ and associated DQ in any given cycle.
- 12) MIN (t_{CL} , t_{CH}) refers to the smaller of the actual clock low time and the actual clock high time as provided to the device (i.e. this value can be greater than the minimum specification limits for t_{CL} and t_{CH}).
- 13) The t_{HZ} , t_{RPST} and t_{LZ} , t_{RPRE} parameters are referenced to a specific voltage level, which specify when the device output is no longer driving (t_{HZ} , t_{RPST}), or begins driving (t_{LZ} , t_{RPRE}). t_{HZ} and t_{LZ} transitions occur in the same access time windows as valid data transitions. These parameters are verified by design and characterization, but not subject to production test.
- 14) The Auto-Refresh command interval has been reduced to 3.9 μs when operating the DDR2 DRAM in a temperature range between 85 °C and 95 °C.
- 15) $0 \text{ }^\circ\text{C} \leq T_{CASE} \leq 85 \text{ }^\circ\text{C}$
- 16) $85 \text{ }^\circ\text{C} < T_{CASE} \leq 95 \text{ }^\circ\text{C}$
- 17) A maximum of eight Auto-Refresh commands can be posted to any given DDR2 SDRAM device.
- 18) The t_{RRD} timing parameter depends on the page size of the DRAM organization. See **Table 4 “Ordering Information for RoHS Compliant Products” on Page 5**.
- 19) The maximum limit for the t_{WPST} parameter is not a device limit. The device operates with a greater value for this parameter, but system performance (bus turnaround) degrades accordingly.
- 20) WR must be programmed to fulfill the minimum requirement for the t_{WR} timing parameter, where $WR_{\text{MIN}}[\text{cycles}] = t_{WR}(\text{ns})/t_{CK}(\text{ns})$ rounded up to the next integer value. $t_{DAL} = WR + (t_{RP}/t_{CK})$. For each of the terms, if not already an integer, round to the next highest integer. t_{CK} refers to the application clock period. WR refers to the WR parameter stored in the MRS.
- 21) Minimum t_{WTR} is two clocks when operating the DDR2-SDRAM at frequencies $\leq 200 \text{ MHz}$.
- 22) User can choose two different active power-down modes for additional power saving via MRS address bit A12. In “standard active power-down mode” (MR, A12 = “0”) a fast power-down exit timing t_{XARD} can be used. In “low active power-down mode” (MR, A12 = “1”) a slow power-down exit timing t_{XARDS} has to be satisfied.



3.3.3 ODT AC Electrical Characteristics

TABLE 21

ODT AC Characteristics and Operating Conditions for DDR2-667

Symbol	Parameter / Condition	Values		Unit	Note
		Min.	Max.		
t_{AOND}	ODT turn-on delay	2	2	n_{CK}	1)
t_{AON}	ODT turn-on	$t_{AC.MIN}$	$t_{AC.MAX} + 0.7 \text{ ns}$	ns	1)2)
t_{AONPD}	ODT turn-on (Power-Down Modes)	$t_{AC.MIN} + 2 \text{ ns}$	$2 t_{CK} + t_{AC.MAX} + 1 \text{ ns}$	ns	1)
t_{AOFD}	ODT turn-off delay	2.5	2.5	n_{CK}	1)
t_{AOF}	ODT turn-off	$t_{AC.MIN}$	$t_{AC.MAX} + 0.6 \text{ ns}$	ns	1)3)
t_{AOFPD}	ODT turn-off (Power-Down Modes)	$t_{AC.MIN} + 2 \text{ ns}$	$2.5 t_{CK} + t_{AC.MAX} + 1 \text{ ns}$	ns	1)
t_{ANPD}	ODT to Power Down Mode Entry Latency	3	—	n_{CK}	1)
t_{AXPD}	ODT Power Down Exit Latency	8	—	n_{CK}	1)

- 1) New units, " $t_{CK.AVG}$ " and " n_{CK} ", are introduced in DDR2-667 and DDR2-800. Unit " $t_{CK.AVG}$ " represents the actual $t_{CK.AVG}$ of the input clock under operation. Unit " n_{CK} " represents one clock cycle of the input clock, counting the actual clock edges. Note that in DDR2-400 and DDR2-533, " t_{CK} " is used for both concepts. Example: $t_{XP} = 2 [n_{CK}]$ means; if Power Down exit is registered at T_m , an Active command may be registered at $T_m + 2$, even if $(T_m + 2 - T_m)$ is $2 \times t_{CK.AVG} + t_{ERR.2PER(Min)}$.
- 2) ODT turn on time min is when the device leaves high impedance and ODT resistance begins to turn on. ODT turn on time max is when the ODT resistance is fully on. Both are measured from t_{AOND} , which is interpreted differently per speed bin. For DDR2-667/800, t_{AOND} is 2 clock cycles after the clock edge that registered a first ODT HIGH counting the actual input clock edges.
- 3) ODT turn off time min is when the device starts to turn off ODT resistance. ODT turn off time max is when the bus is in high impedance. Both are measured from t_{AOFD} , which is interpreted differently per speed bin. For DDR2-667/800, if $t_{CK(avg)} = 3 \text{ ns}$ is assumed, t_{AOFD} is 1.5 ns (= $0.5 \times 3 \text{ ns}$) after the second trailing clock edge counting from the clock edge that registered a first ODT LOW and by counting the actual input clock edges.

TABLE 22

ODT AC Characteristics and Operating Conditions for DDR2-533 & DDR2-400

Symbol	Parameter / Condition	Values		Unit	Note
		Min.	Max.		
t_{AOND}	ODT turn-on delay	2	2	t_{CK}	
t_{AON}	ODT turn-on	$t_{AC.MIN}$	$t_{AC.MAX} + 1 \text{ ns}$	ns	1)
t_{AONPD}	ODT turn-on (Power-Down Modes)	$t_{AC.MIN} + 2 \text{ ns}$	$2 t_{CK} + t_{AC.MAX} + 1 \text{ ns}$	ns	
t_{AOFD}	ODT turn-off delay	2.5	2.5	t_{CK}	
t_{AOF}	ODT turn-off	$t_{AC.MIN}$	$t_{AC.MAX} + 0.6 \text{ ns}$	ns	2)
t_{AOFPD}	ODT turn-off (Power-Down Modes)	$t_{AC.MIN} + 2 \text{ ns}$	$2.5 t_{CK} + t_{AC.MAX} + 1 \text{ ns}$	ns	
t_{ANPD}	ODT to Power Down Mode Entry Latency	3	—	t_{CK}	
t_{AXPD}	ODT Power Down Exit Latency	8	—	t_{CK}	

- 1) ODT turn on time min. is when the device leaves high impedance and ODT resistance begins to turn on. ODT turn on time max is when the ODT resistance is fully on. Both are measured from t_{AOND} , which is interpreted differently per speed bin. For DDR2-400/533, t_{AOND} is 10 ns (= $2 \times 5 \text{ ns}$) after the clock edge that registered a first ODT HIGH if $t_{CK} = 5 \text{ ns}$.



HYS72T[64/128]3x0HP-[3/3S/3.7/5]-B
240-Pin Registered DDR2 SDRAM

- 2) ODT turn off time min. is when the device starts to turn off ODT resistance. ODT turn off time max is when the bus is in high impedance. Both are measured from t_{AOFD} . Both are measured from t_{AOFD} , which is interpreted differently per speed bin. For DDR2-400/533, t_{AOFD} is 12.5 ns (= 2.5 x 5 ns) after the clock edge that registered a first ODT HIGH if $t_{CK} = 5$ ns.

3.4 Currents Specifications and Conditions

List of tables defining I_{DD} Specifications and Conditions.

- **Table 23 “IDD Measurement Conditions” on Page 30**
- **Table 25 “IDD Specification for HYS72T[64/128]3x0HP-[3/3S]-B” on Page 32**
- **Table 26 “IDD Specification for HYS72T[64/128]3x0HP-[3.7/5]-B” on Page 33**

TABLE 23
 I_{DD} Measurement Conditions

Parameter	Symbol	Note 1)2)3)4)5)6) 7)8)
Operating Current 0 One bank Active - Precharge; $t_{CK} = t_{CK.MIN}$, $t_{RC} = t_{RC.MIN}$, $t_{RAS} = t_{RAS.MIN}$, CKE is HIGH, \overline{CS} is HIGH between valid commands. Address and control inputs are SWITCHING, Databus inputs are SWITCHING.	I_{DD0}	
Operating Current 1 One bank Active - Read - Precharge; $I_{OUT} = 0$ mA, $BL = 4$, $t_{CK} = t_{CK.MIN}$, $t_{RC} = t_{RC.MIN}$, $t_{RAS} = t_{RAS.MIN}$, $t_{RCD} = t_{RCD.MIN}$, $AL = 0$, $CL = CL_{MIN}$; CKE is HIGH, \overline{CS} is HIGH between valid commands. Address and control inputs are SWITCHING, Databus inputs are SWITCHING.	I_{DD1}	
Precharge Standby Current All banks idle; \overline{CS} is HIGH; CKE is HIGH; $t_{CK} = t_{CK.MIN}$; Other control and address inputs are SWITCHING, Data bus inputs are SWITCHING	I_{DD2N}	
Precharge Power-Down Current Other control and address inputs are STABLE, Data bus inputs are FLOATING.	I_{DD2P}	
Precharge Quiet Standby Current All banks idle; \overline{CS} is HIGH; CKE is HIGH; $t_{CK} = t_{CK.MIN}$; Other control and address inputs are STABLE, Data bus inputs are FLOATING.	I_{DD2Q}	
Active Power-Down Current All banks open; $t_{CK} = t_{CK.MIN}$, CKE is LOW; Other control and address inputs are STABLE, Data bus inputs are FLOATING. MRS A12 bit is set to LOW (Fast Power-down Exit);	$I_{DD3P(0)}$	
Active Power-Down Current All banks open; $t_{CK} = t_{CK.MIN}$, CKE is LOW; Other control and address inputs are STABLE, Data bus inputs are FLOATING. MRS A12 bit is set to HIGH (Slow Power-down Exit);	$I_{DD3P(1)}$	
Active Standby Current Burst Read: All banks open; Continuous burst reads; $BL = 4$; $AL = 0$, $CL = CL_{MIN}$; $t_{CK} = t_{CK.MIN}$; $t_{RAS} = t_{RAS.MAX}$, $t_{RP} = t_{RP.MIN}$; CKE is HIGH, \overline{CS} is HIGH between valid commands. Address inputs are SWITCHING; Data Bus inputs are SWITCHING; $I_{OUT} = 0$ mA.	I_{DD3N}	
Operating Current Burst Read: All banks open; Continuous burst reads; $BL = 4$; $AL = 0$, $CL = CL_{MIN}$; $t_{CK} = t_{CK.MIN}$; $t_{RAS} = t_{RAS.MAX}$, $t_{RP} = t_{RP.MIN}$; CKE is HIGH, \overline{CS} is HIGH between valid commands. Address inputs are SWITCHING; Data Bus inputs are SWITCHING; $I_{OUT} = 0$ mA.	I_{DD4R}	



HYS72T[64/128]3x0HP-[3/3S/3.7/5]-B
240-Pin Registered DDR2 SDRAM

Parameter	Symbol	Note 1)2)3)4)5)6) 7)8)
Operating Current Burst Write: All banks open; Continuous burst writes; BL = 4; AL = 0, CL = CL _{MIN} ; $t_{CK} = t_{CK,MIN}$; $t_{RAS} = t_{RAS,MAX}$; $t_{RP} = t_{RP,MAX}$; CKE is HIGH, \overline{CS} is HIGH between valid commands. Address inputs are SWITCHING; Data Bus inputs are SWITCHING;	I_{DD4W}	
Burst Refresh Current $t_{CK} = t_{CK,MIN}$; Refresh command every $t_{RFC} = t_{RFC,MIN}$ interval, CKE is HIGH, \overline{CS} is HIGH between valid commands, Other control and address inputs are SWITCHING, Data bus inputs are SWITCHING.	I_{DD5B}	
Distributed Refresh Current $t_{CK} = t_{CK,MIN}$; Refresh command every $t_{RFC} = t_{REFI}$ interval, CKE is LOW and \overline{CS} is HIGH between valid commands, Other control and address inputs are SWITCHING, Data bus inputs are SWITCHING.	I_{DD5D}	
Self-Refresh Current CKE ≤ 0.2 V; external clock off, CK and \overline{CK} at 0 V; Other control and address inputs are FLOATING, Data bus inputs are FLOATING. RESET is LOW. I_{DD6} current values are guaranteed up to T_{CASE} of 85 °C max.	I_{DD6}	
All Bank Interleave Read Current All banks are being interleaved at minimum t_{RC} without violating t_{RRD} using a burst length of 4. Control and address bus inputs are STABLE during DESELECTS. $I_{OUT} = 0$ mA.	I_{DD7}	

- 1) $V_{DDQ} = 1.8\text{ V} \pm 0.1\text{ V}$; $V_{DD} = 1.8\text{ V} \pm 0.1\text{ V}$
- 2) IDD specifications are tested after the device is properly initialized and IDD parameter are specified with ODT disabled.
- 3) Definitions for I_{DD} see **Table 24**
- 4) I_{DD1} , I_{DD4R} and I_{DD7} current measurements are defined with the outputs disabled ($I_{OUT} = 0$ mA). To achieve this on module level the output buffers can be disabled using an EMRS(1) (Extended Mode Register Command) by setting A12 bit to HIGH.
- 5) For two rank modules: for all active current measurements the other rank is in Precharge Power-Down Mode I_{DD2P}
- 6) RESET signal is HIGH for all currents, except for I_{DD6} (Self Refresh)
- 7) All current measurements includes Register and PLL current consumption
- 8) For details and notes see the relevant Qimonda component data sheet

TABLE 24
Definitions for I_{DD}

Parameter	Description
LOW	$V_{IN} \leq V_{IL(ac),MAX}$; HIGH is defined as $V_{IN} \geq V_{IH(ac),MIN}$
STABLE	inputs are stable at a HIGH or LOW level
FLOATING	inputs are $V_{REF} = V_{DDQ}/2$
SWITCHING	inputs are changing between HIGH and LOW every other clock (once per 2 cycles) for address and control signals, and inputs changing between HIGH and LOW every other data transfer (once per cycle) for DQ signals not including mask or strobes.



HYS72T[64/128]3x0HP-[3/3S/3.7/5]-B
240-Pin Registered DDR2 SDRAM

TABLE 25

I_{DD} Specification for HYS72T[64/128]3x0HP-[3/3S]-B

Product Type	HYS72T64300HP-3-B	HYS72T128300HP-3-B	HYS72T128320HP-3-B	HYS72T64300HP-3S-B	HYS72T128300HP-3S-B	HYS72T128320HP-3S-B	Unit	Note ¹⁾
Organization	512MB	1GB	1GB	512MB	1GB	1GB		
	1 Rank	1 Rank	2 Ranks	1 Rank	1 Rank	2 Ranks		
	×72	×72	×72	×72	×72	×72		
	-3	-3	-3	-3S	-3S	-3S		
Symbol	Max.	Max.	Max.	Max.	Max.	Max.		
I_{DD0}	1060	1950	1330	1020	1870	1300	mA	2)
I_{DD1}	1200	2220	1470	1150	2130	1420	mA	2)
I_{DD2P}	450	721	720	450	720	720	mA	3)
I_{DD2N}	790	1410	1410	790	1410	1410	mA	3)
I_{DD2Q}	750	1320	1320	750	1320	1320	mA	3)
I_{DD3P} (fast)	680	1190	1190	680	1190	1190	mA	3)4)
I_{DD3P} (slow)	470	760	760	470	760	760	mA	3)5)
I_{DD3N}	840	1500	1500	840	1500	1500	mA	3)
I_{DD4R}	1560	2940	1830	1560	2940	1830	mA	2)
I_{DD4W}	1560	2940	1830	1560	2940	1830	mA	2)
I_{DD5B}	1650	3120	1920	1650	3120	1920	mA	2)
I_{DD5D}	470	760	760	470	760	760	mA	3)6)
I_{DD6}	63	126	126	63	126	126	mA	3)4)
I_{DD7}	1830	3480	2100	1750	3330	2030	mA	2)

- 1) Module I_{DD} is calculated on the basis of component I_{DD} and includes currents of Registers and PLL. ODT disabled. I_{DD1} , I_{DD4R} , and I_{DD7} , are defined with the outputs disabled.
- 2) The other rank is in I_{DD2P} Precharge Power-Down Current mode
- 3) Both ranks are in the same I_{DD} current mode
- 4) Fast: MRS(12)=0
- 5) Slow: MRS(12)=1
- 6) I_{DD5D} and I_{DD6} values are for $0\text{ °C} \leq T_{Case} \leq 85\text{ °C}$



HYS72T[64/128]3x0HP-[3/3S/3.7/5]-B
240-Pin Registered DDR2 SDRAM

TABLE 26

I_{DD} Specification for HYS72T[64/128]3x0HP-[3.7/5]-B

Product Type	HYS72T64300HP-3.7-B	HYS72T128300HP-3.7-B	HYS72T128320HP-3.7-B	HYS72T128320HP-5-B	Unit	Note ¹⁾
Organization	512MB	1GB	1GB	1GB		
	1 Rank	1 Rank	2 Ranks	2 Ranks		
	×72	×72	×72	×72		
	-3.7	-3.7	-3.7	-5		
Symbol	Max.	Max.	Max.	Max.		
I_{DD0}	920	1670	1150	1020	mA	2)
I_{DD1}	1010	1850	1240	1100	mA	2)
I_{DD2P}	390	626	630	530	mA	3)
I_{DD2N}	670	1180	1180	1020	mA	3)
I_{DD2Q}	650	1130	1130	980	mA	3)
I_{DD3P} (fast)	580	1000	1000	840	mA	3)4)
I_{DD3P} (slow)	410	660	660	570	mA	3)5)
I_{DD3N}	720	1270	1270	1110	mA	3)
I_{DD4R}	1320	2480	1550	1320	mA	2)
I_{DD4W}	1320	2480	1550	1320	mA	2)
I_{DD5B}	1500	2840	1730	1590	mA	2)
I_{DD5D}	410	660	660	570	mA	3)6)
I_{DD6}	63	126	126	126	mA	3)4)
I_{DD7}	1640	3110	1870	1740	mA	2)

- 1) Module I_{DD} is calculated on the basis of component I_{DD} and includes currents of Registers and PLL. ODT disabled. I_{DD1} , I_{DD4R} , and I_{DD7} , are defined with the outputs disabled.
- 2) The other rank is in I_{DD2P} Precharge Power-Down Current mode
- 3) Both ranks are in the same I_{DD} current mode
- 4) Fast: MRS(12)=0
- 5) Slow: MRS(12)=1
- 6) I_{DD5D} and I_{DD6} values are for $0\text{ }^{\circ}\text{C} \leq T_{Case} \leq 85\text{ }^{\circ}\text{C}$



4 SPD Codes

This chapter lists all hexadecimal byte values stored in the EEPROM of the products described in this data sheet. SPD stands for serial presence detect. All values with XX in the table are module specific bytes which are defined during production.

List of SPD Code Tables

- Table 27 “SPD Codes for HYS72T[64/128]3x0HP-3-B” on Page 34
- Table 28 “SPD Codes for HYS72T[64/128]3x0HP-3S-B” on Page 39
- Table 29 “SPD Codes for HYS72T[64/128]3x0HP-[3.7/5]-B” on Page 43

TABLE 27

SPD Codes for HYS72T[64/128]3x0HP-3-B

Product Type		HYS72T64300HP-3-B	HYS72T128300HP-3-B	HYS72T128320HP-3-B
Organization		512 MB	1 GByte	1 GByte
		×72	×72	×72
		1 Rank (×8)	1 Rank (×4)	2 Ranks (×8)
Label Code		PC2-5300R-444	PC2-5300R-444	PC2-5300R-444
JEDEC SPD Revision		Rev. 1.2	Rev. 1.2	Rev. 1.2
Byte#	Description	HEX	HEX	HEX
0	Programmed SPD Bytes in EEPROM	80	80	80
1	Total number of Bytes in EEPROM	08	08	08
2	Memory Type (DDR2)	08	08	08
3	Number of Row Addresses	0E	0E	0E
4	Number of Column Addresses	0A	0B	0A
5	DIMM Rank and Stacking Information	00	00	01
6	Data Width	48	48	48
7	Not used	00	00	00
8	Interface Voltage Level	05	05	05
9	$t_{CK} @ CL_{MAX}$ (Byte 18) [ns]	30	30	30
10	t_{AC} SDRAM @ CL_{MAX} (Byte 18) [ns]	45	45	45
11	Error Correction Support (non-ECC, ECC)	06	06	06
12	Refresh Rate and Type	82	82	82
13	Primary SDRAM Width	08	04	08



HYS72T[64/128]3x0HP-[3/3S/3.7/5]-B
240-Pin Registered DDR2 SDRAM

Product Type		HYS72T64300HP-3-B	HYS72T128300HP-3-B	HYS72T128320HP-3-B
Organization		512 MB	1 GByte	1 GByte
		×72	×72	×72
		1 Rank (×8)	1 Rank (×4)	2 Ranks (×8)
Label Code		PC2-5300R-444	PC2-5300R-444	PC2-5300R-444
JEDEC SPD Revision		Rev. 1.2	Rev. 1.2	Rev. 1.2
Byte#	Description	HEX	HEX	HEX
14	Error Checking SDRAM Width	08	04	08
15	Not used	00	00	00
16	Burst Length Supported	0C	0C	0C
17	Number of Banks on SDRAM Device	04	04	04
18	Supported CAS Latencies	38	38	38
19	DIMM Mechanical Characteristics	01	01	01
20	DIMM Type Information	01	01	01
21	DIMM Attributes	04	05	05
22	Component Attributes	07	07	07
23	$t_{CK} @ CL_{MAX} -1$ (Byte 18) [ns]	30	30	30
24	t_{AC} SDRAM @ $CL_{MAX} -1$ [ns]	45	45	45
25	$t_{CK} @ CL_{MAX} -2$ (Byte 18) [ns]	50	50	50
26	t_{AC} SDRAM @ $CL_{MAX} -2$ [ns]	60	60	60
27	$t_{RP.MIN}$ [ns]	30	30	30
28	$t_{RRD.MIN}$ [ns]	1E	1E	1E
29	$t_{RCD.MIN}$ [ns]	30	30	30
30	$t_{RAS.MIN}$ [ns]	2D	2D	2D
31	Module Density per Rank	80	01	80
32	$t_{AS.MIN}$ and $t_{CS.MIN}$ [ns]	20	20	20
33	$t_{AH.MIN}$ and $t_{CH.MIN}$ [ns]	27	27	27
34	$t_{DS.MIN}$ [ns]	10	10	10
35	$t_{DH.MIN}$ [ns]	17	17	17
36	$t_{WR.MIN}$ [ns]	3C	3C	3C
37	$t_{WTR.MIN}$ [ns]	1E	1E	1E
38	$t_{RTP.MIN}$ [ns]	1E	1E	1E
39	Analysis Characteristics	00	00	00
40	t_{RC} and t_{RFC} Extension	00	00	00



HYS72T[64/128]3x0HP-[3/3S/3.7/5]-B
240-Pin Registered DDR2 SDRAM

Product Type		HYS72T64300HP-3-B	HYS72T128300HP-3-B	HYS72T128320HP-3-B
Organization		512 MB	1 GByte	1 GByte
		×72	×72	×72
		1 Rank (×8)	1 Rank (×4)	2 Ranks (×8)
Label Code		PC2-5300R-444	PC2-5300R-444	PC2-5300R-444
JEDEC SPD Revision		Rev. 1.2	Rev. 1.2	Rev. 1.2
Byte#	Description	HEX	HEX	HEX
41	$t_{RC.MIN}$ [ns]	39	39	39
42	$t_{RFC.MIN}$ [ns]	69	69	69
43	$t_{CK.MAX}$ [ns]	80	80	80
44	$t_{DQSQ.MAX}$ [ns]	18	18	18
45	$t_{QHS.MAX}$ [ns]	22	22	22
46	PLL Relock Time	0F	0F	0F
47	$T_{CASE.MAX}$ Delta / ΔT_{4R4W} Delta	50	50	50
48	Psi(T-A) DRAM	7A	7A	7A
49	ΔT_0 (DT0)	53	53	53
50	ΔT_{2N} (DT2N, UDIMM) or ΔT_{2Q} (DT2Q, RDIMM)	2E	2E	2E
51	ΔT_{2P} (DT2P)	36	36	36
52	ΔT_{3N} (DT3N)	27	27	27
53	$\Delta T_{3P.fast}$ (DT3P fast)	4C	4C	4C
54	$\Delta T_{3P.slow}$ (DT3P slow)	2A	2A	2A
55	ΔT_{4R} (DT4R) / ΔT_{4R4W} Sign (DT4R4W)	4C	4C	4C
56	ΔT_{5B} (DT5B)	20	20	20
57	ΔT_7 (DT7)	25	25	25
58	Psi(ca) PLL	C4	C4	C4
59	Psi(ca) REG	8C	8C	8C
60	ΔT_{PLL} (DTPLL)	68	68	68
61	ΔT_{REG} (DTREG) / Toggle Rate	94	94	94
62	SPD Revision	12	12	12
63	Checksum of Bytes 0-62	05	80	07
64	JEDEC ID Code of Qimonda (1)	7F	7F	7F
65	JEDEC ID Code of Qimonda (2)	7F	7F	7F
66	JEDEC ID Code of Qimonda (3)	7F	7F	7F
67	JEDEC ID Code of Qimonda (4)	7F	7F	7F



HYS72T[64/128]3x0HP-[3/3S/3.7/5]-B
240-Pin Registered DDR2 SDRAM

Product Type		HYS72T64300HP-3-B	HYS72T128300HP-3-B	HYS72T128320HP-3-B
Organization		512 MB	1 GByte	1 GByte
		×72	×72	×72
		1 Rank (×8)	1 Rank (×4)	2 Ranks (×8)
Label Code		PC2-5300R-444	PC2-5300R-444	PC2-5300R-444
JEDEC SPD Revision		Rev. 1.2	Rev. 1.2	Rev. 1.2
Byte#	Description	HEX	HEX	HEX
68	JEDEC ID Code of Qimonda (5)	7F	7F	7F
69	JEDEC ID Code of Qimonda (6)	51	51	51
70	JEDEC ID Code of Qimonda (7)	00	00	00
71	JEDEC ID Code of Qimonda (8)	00	00	00
72	Module Manufacturer Location	xx	xx	xx
73	Product Type, Char 1	37	37	37
74	Product Type, Char 2	32	32	32
75	Product Type, Char 3	54	54	54
76	Product Type, Char 4	36	31	31
77	Product Type, Char 5	34	32	32
78	Product Type, Char 6	33	38	38
79	Product Type, Char 7	30	33	33
80	Product Type, Char 8	30	30	32
81	Product Type, Char 9	48	30	30
82	Product Type, Char 10	50	48	48
83	Product Type, Char 11	33	50	50
84	Product Type, Char 12	42	33	33
85	Product Type, Char 13	20	42	42
86	Product Type, Char 14	20	20	20
87	Product Type, Char 15	20	20	20
88	Product Type, Char 16	20	20	20
89	Product Type, Char 17	20	20	20
90	Product Type, Char 18	20	20	20
91	Module Revision Code	0x	0x	0x
92	Test Program Revision Code	xx	xx	xx
93	Module Manufacturing Date Year	xx	xx	xx
94	Module Manufacturing Date Week	xx	xx	xx



HYS72T[64/128]3x0HP-[3/3S/3.7/5]-B
240-Pin Registered DDR2 SDRAM

Product Type		HYS72T64300HP-3-B	HYS72T128300HP-3-B	HYS72T128320HP-3-B
Organization		512 MB	1 GByte	1 GByte
		×72	×72	×72
		1 Rank (×8)	1 Rank (×4)	2 Ranks (×8)
Label Code		PC2-5300R-444	PC2-5300R-444	PC2-5300R-444
JEDEC SPD Revision		Rev. 1.2	Rev. 1.2	Rev. 1.2
Byte#	Description	HEX	HEX	HEX
95 - 98	Module Serial Number	xx	xx	xx
99 - 255	Not used	FF	FF	FF



HYS72T[64/128]3x0HP-[3/3S/3.7/5]-B
240-Pin Registered DDR2 SDRAM

TABLE 28
SPD Codes for HYS72T[64/128]3x0HP-3S-B

Product Type		HYS72T64300HP-3S-B	HYS72T128300HP-3S-B	HYS72T128320HP-3S-B
Organization		512 MB	1 GByte	1 GByte
		×72	×72	×72
		1 Rank (×8)	1 Rank (×4)	2 Ranks (×8)
Label Code		PC2-5300R-555	PC2-5300R-555	PC2-5300R-555
JEDEC SPD Revision		Rev. 1.2	Rev. 1.2	Rev. 1.2
Byte#	Description	HEX	HEX	HEX
0	Programmed SPD Bytes in EEPROM	80	80	80
1	Total number of Bytes in EEPROM	08	08	08
2	Memory Type (DDR2)	08	08	08
3	Number of Row Addresses	0E	0E	0E
4	Number of Column Addresses	0A	0B	0A
5	DIMM Rank and Stacking Information	00	00	01
6	Data Width	48	48	48
7	Not used	00	00	00
8	Interface Voltage Level	05	05	05
9	$t_{CK} @ CL_{MAX}$ (Byte 18) [ns]	30	30	30
10	t_{AC} SDRAM @ CL_{MAX} (Byte 18) [ns]	45	45	45
11	Error Correction Support (non-ECC, ECC)	06	06	06
12	Refresh Rate and Type	82	82	82
13	Primary SDRAM Width	08	04	08
14	Error Checking SDRAM Width	08	04	08
15	Not used	00	00	00
16	Burst Length Supported	0C	0C	0C
17	Number of Banks on SDRAM Device	04	04	04
18	Supported CAS Latencies	38	38	38
19	DIMM Mechanical Characteristics	01	01	01
20	DIMM Type Information	01	01	01
21	DIMM Attributes	04	05	05
22	Component Attributes	07	07	07
23	$t_{CK} @ CL_{MAX} -1$ (Byte 18) [ns]	3D	3D	3D



HYS72T[64/128]3x0HP-[3/3S/3.7/5]-B
240-Pin Registered DDR2 SDRAM

Product Type		HYS72T64300HP-3S-B	HYS72T128300HP-3S-B	HYS72T128320HP-3S-B
Organization		512 MB	1 GByte	1 GByte
		×72	×72	×72
		1 Rank (×8)	1 Rank (×4)	2 Ranks (×8)
Label Code		PC2-5300R-555	PC2-5300R-555	PC2-5300R-555
JEDEC SPD Revision		Rev. 1.2	Rev. 1.2	Rev. 1.2
Byte#	Description	HEX	HEX	HEX
24	t_{AC} SDRAM @ $CL_{MAX} -1$ [ns]	50	50	50
25	t_{CK} @ $CL_{MAX} -2$ (Byte 18) [ns]	50	50	50
26	t_{AC} SDRAM @ $CL_{MAX} -2$ [ns]	60	60	60
27	$t_{RP.MIN}$ [ns]	3C	3C	3C
28	$t_{RRD.MIN}$ [ns]	1E	1E	1E
29	$t_{RCD.MIN}$ [ns]	3C	3C	3C
30	$t_{RAS.MIN}$ [ns]	2D	2D	2D
31	Module Density per Rank	80	01	80
32	$t_{AS.MIN}$ and $t_{CS.MIN}$ [ns]	20	20	20
33	$t_{AH.MIN}$ and $t_{CH.MIN}$ [ns]	27	27	27
34	$t_{DS.MIN}$ [ns]	10	10	10
35	$t_{DH.MIN}$ [ns]	17	17	17
36	$t_{WR.MIN}$ [ns]	3C	3C	3C
37	$t_{WTR.MIN}$ [ns]	1E	1E	1E
38	$t_{RTP.MIN}$ [ns]	1E	1E	1E
39	Analysis Characteristics	00	00	00
40	t_{RC} and t_{RFC} Extension	00	00	00
41	$t_{RC.MIN}$ [ns]	3C	3C	3C
42	$t_{RFC.MIN}$ [ns]	69	69	69
43	$t_{CK.MAX}$ [ns]	80	80	80
44	$t_{DQSQ.MAX}$ [ns]	18	18	18
45	$t_{QHS.MAX}$ [ns]	22	22	22
46	PLL Relock Time	0F	0F	0F
47	$T_{CASE.MAX}$ Delta / ΔT_{4R4W} Delta	50	50	50
48	Psi(T-A) DRAM	7A	7A	7A
49	ΔT_0 (DT0)	4B	4B	4B



HYS72T[64/128]3x0HP-[3/3S/3.7/5]-B
240-Pin Registered DDR2 SDRAM

Product Type		HYS72T64300HP-3S-B	HYS72T128300HP-3S-B	HYS72T128320HP-3S-B
Organization		512 MB	1 GByte	1 GByte
		×72	×72	×72
		1 Rank (×8)	1 Rank (×4)	2 Ranks (×8)
Label Code		PC2-5300R-555	PC2-5300R-555	PC2-5300R-555
JEDEC SPD Revision		Rev. 1.2	Rev. 1.2	Rev. 1.2
Byte#	Description	HEX	HEX	HEX
50	ΔT_{2N} (DT2N, UDIMM) or ΔT_{2Q} (DT2Q, RDIMM)	2E	2E	2E
51	ΔT_{2P} (DT2P)	36	36	36
52	ΔT_{3N} (DT3N)	27	27	27
53	$\Delta T_{3P.fast}$ (DT3P fast)	4C	4C	4C
54	$\Delta T_{3P.slow}$ (DT3P slow)	2A	2A	2A
55	ΔT_{4R} (DT4R) / ΔT_{4R4W} Sign (DT4R4W)	4C	4C	4C
56	ΔT_{5B} (DT5B)	20	20	20
57	ΔT_7 (DT7)	23	23	23
58	Psi(ca) PLL	C4	C4	C4
59	Psi(ca) REG	8C	8C	8C
60	ΔT_{PLL} (DTPLL)	68	68	68
61	ΔT_{REG} (DTREG) / Toggle Rate	94	94	94
62	SPD Revision	12	12	12
63	Checksum of Bytes 0-62	2E	A9	30
64	JEDEC ID Code of Qimonda (1)	7F	7F	7F
65	JEDEC ID Code of Qimonda (2)	7F	7F	7F
66	JEDEC ID Code of Qimonda (3)	7F	7F	7F
67	JEDEC ID Code of Qimonda (4)	7F	7F	7F
68	JEDEC ID Code of Qimonda (5)	7F	7F	7F
69	JEDEC ID Code of Qimonda (6)	51	51	51
70	JEDEC ID Code of Qimonda (7)	00	00	00
71	JEDEC ID Code of Qimonda (8)	00	00	00
72	Module Manufacturer Location	xx	xx	xx
73	Product Type, Char 1	37	37	37
74	Product Type, Char 2	32	32	32
75	Product Type, Char 3	54	54	54



HYS72T[64/128]3x0HP-[3/3S/3.7/5]-B
240-Pin Registered DDR2 SDRAM

Product Type		HYS72T64300HP-3S-B	HYS72T128300HP-3S-B	HYS72T128320HP-3S-B
Organization		512 MB	1 GByte	1 GByte
		×72	×72	×72
		1 Rank (×8)	1 Rank (×4)	2 Ranks (×8)
Label Code		PC2-5300R-555	PC2-5300R-555	PC2-5300R-555
JEDEC SPD Revision		Rev. 1.2	Rev. 1.2	Rev. 1.2
Byte#	Description	HEX	HEX	HEX
76	Product Type, Char 4	36	31	31
77	Product Type, Char 5	34	32	32
78	Product Type, Char 6	33	38	38
79	Product Type, Char 7	30	33	33
80	Product Type, Char 8	30	30	32
81	Product Type, Char 9	48	30	30
82	Product Type, Char 10	50	48	48
83	Product Type, Char 11	33	50	50
84	Product Type, Char 12	53	33	33
85	Product Type, Char 13	42	53	53
86	Product Type, Char 14	20	42	42
87	Product Type, Char 15	20	20	20
88	Product Type, Char 16	20	20	20
89	Product Type, Char 17	20	20	20
90	Product Type, Char 18	20	20	20
91	Module Revision Code	0x	0x	0x
92	Test Program Revision Code	xx	xx	xx
93	Module Manufacturing Date Year	xx	xx	xx
94	Module Manufacturing Date Week	xx	xx	xx
95 - 98	Module Serial Number	xx	xx	xx
99 - 255	Not used	FF	FF	FF



HYS72T[64/128]3x0HP-[3/3S/3.7/5]-B
240-Pin Registered DDR2 SDRAM

TABLE 29
SPD Codes for HYS72T[64/128]3x0HP-[3.7/5]-B

Product Type		HYS72T64300HP-3.7-B	HYS72T128300HP-3.7-B	HYS72T128320HP-3.7-B	HYS72T128320HP-5-B
Organization		512 MB	1 GByte	1 GByte	1 GByte
		×72	×72	×72	×72
		1 Rank (×8)	1 Rank (×4)	2 Ranks (×8)	2 Ranks (×8)
Label Code		PC2-4200R-444	PC2-4200R-444	PC2-4200R-444	PC2-3200R-333
JEDEC SPD Revision		Rev. 1.2	Rev. 1.2	Rev. 1.2	Rev. 1.2
Byte #	Description	HEX	HEX	HEX	HEX
0	Programmed SPD Bytes in EEPROM	80	80	80	80
1	Total number of Bytes in EEPROM	08	08	08	08
2	Memory Type (DDR2)	08	08	08	08
3	Number of Row Addresses	0E	0E	0E	0E
4	Number of Column Addresses	0A	0B	0A	0A
5	DIMM Rank and Stacking Information	00	00	01	01
6	Data Width	48	48	48	48
7	Not used	00	00	00	00
8	Interface Voltage Level	05	05	05	05
9	$t_{CK} @ CL_{MAX}$ (Byte 18) [ns]	3D	3D	3D	50
10	t_{AC} SDRAM @ CL_{MAX} (Byte 18) [ns]	50	50	50	60
11	Error Correction Support (non-ECC, ECC)	06	06	06	06
12	Refresh Rate and Type	82	82	82	82
13	Primary SDRAM Width	08	04	08	08
14	Error Checking SDRAM Width	08	04	08	08
15	Not used	00	00	00	00
16	Burst Length Supported	0C	0C	0C	0C
17	Number of Banks on SDRAM Device	04	04	04	04
18	Supported CAS Latencies	38	38	38	38
19	DIMM Mechanical Characteristics	01	01	01	01
20	DIMM Type Information	01	01	01	01
21	DIMM Attributes	04	05	05	05



HYS72T[64/128]3x0HP-[3/3S/3.7/5]-B
240-Pin Registered DDR2 SDRAM

Product Type		HYS72T64300HP-3.7-B	HYS72T128300HP-3.7-B	HYS72T128320HP-3.7-B	HYS72T128320HP-5-B
Organization		512 MB	1 GByte	1 GByte	1 GByte
		×72	×72	×72	×72
		1 Rank (×8)	1 Rank (×4)	2 Ranks (×8)	2 Ranks (×8)
Label Code		PC2-4200R-444	PC2-4200R-444	PC2-4200R-444	PC2-3200R-333
JEDEC SPD Revision		Rev. 1.2	Rev. 1.2	Rev. 1.2	Rev. 1.2
Byte #	Description	HEX	HEX	HEX	HEX
22	Component Attributes	07	07	07	07
23	$t_{CK} @ CL_{MAX} -1$ (Byte 18) [ns]	3D	3D	3D	50
24	t_{AC} SDRAM @ $CL_{MAX} -1$ [ns]	50	50	50	60
25	$t_{CK} @ CL_{MAX} -2$ (Byte 18) [ns]	50	50	50	50
26	t_{AC} SDRAM @ $CL_{MAX} -2$ [ns]	60	60	60	60
27	$t_{RP.MIN}$ [ns]	3C	3C	3C	3C
28	$t_{RRD.MIN}$ [ns]	1E	1E	1E	1E
29	$t_{RCD.MIN}$ [ns]	3C	3C	3C	3C
30	$t_{RAS.MIN}$ [ns]	2D	2D	2D	28
31	Module Density per Rank	80	01	80	80
32	$t_{AS.MIN}$ and $t_{CS.MIN}$ [ns]	25	25	25	35
33	$t_{AH.MIN}$ and $t_{CH.MIN}$ [ns]	37	37	37	47
34	$t_{DS.MIN}$ [ns]	10	10	10	15
35	$t_{DH.MIN}$ [ns]	22	22	22	27
36	$t_{WR.MIN}$ [ns]	3C	3C	3C	3C
37	$t_{WTR.MIN}$ [ns]	1E	1E	1E	28
38	$t_{RTP.MIN}$ [ns]	1E	1E	1E	1E
39	Analysis Characteristics	00	00	00	00
40	t_{RC} and t_{RFC} Extension	00	00	00	00
41	$t_{RC.MIN}$ [ns]	3C	3C	3C	37
42	$t_{RFC.MIN}$ [ns]	69	69	69	69
43	$t_{CK.MAX}$ [ns]	80	80	80	80
44	$t_{DQSQ.MAX}$ [ns]	1E	1E	1E	23
45	$t_{QHS.MAX}$ [ns]	28	28	28	2D
46	PLL Relock Time	0F	0F	0F	0F
47	$T_{CASE.MAX}$ Delta / ΔT_{4R4W} Delta	50	50	50	50



HYS72T[64/128]3x0HP-[3/3S/3.7/5]-B
240-Pin Registered DDR2 SDRAM

Product Type		HYS72T64300HP-3.7-B	HYS72T128300HP-3.7-B	HYS72T128320HP-3.7-B	HYS72T128320HP-5-B
Organization		512 MB	1 GByte	1 GByte	1 GByte
		×72	×72	×72	×72
		1 Rank (×8)	1 Rank (×4)	2 Ranks (×8)	2 Ranks (×8)
Label Code		PC2-4200R-444	PC2-4200R-444	PC2-4200R-444	PC2-3200R-333
JEDEC SPD Revision		Rev. 1.2	Rev. 1.2	Rev. 1.2	Rev. 1.2
Byte #	Description	HEX	HEX	HEX	HEX
48	Psi(T-A) DRAM	7A	7A	7A	7A
49	ΔT_0 (DT0)	43	43	43	3B
50	ΔT_{2N} (DT2N, UDIMM) or ΔT_{2Q} (DT2Q, RDIMM)	29	29	29	25
51	ΔT_{2P} (DT2P)	36	36	36	36
52	ΔT_{3N} (DT3N)	21	21	21	1E
53	$\Delta T_{3P.fast}$ (DT3P fast)	41	41	41	38
54	$\Delta T_{3P.slow}$ (DT3P slow)	2A	2A	2A	2A
55	ΔT_{4R} (DT4R) / ΔT_{4R4W} Sign (DT4R4W)	40	40	40	38
56	ΔT_{5B} (DT5B)	1E	1E	1E	1D
57	ΔT_7 (DT7)	22	22	22	21
58	Psi(ca) PLL	C4	C4	C4	C4
59	Psi(ca) REG	8C	8C	8C	8C
60	ΔT_{PLL} (DTPLL)	61	61	61	59
61	ΔT_{REG} (DTREG) / Toggle Rate	78	78	78	5C
62	SPD Revision	12	12	12	12
63	Checksum of Bytes 0-62	22	9D	24	58
64	JEDEC ID Code of Qimonda (1)	7F	7F	7F	7F
65	JEDEC ID Code of Qimonda (2)	7F	7F	7F	7F
66	JEDEC ID Code of Qimonda (3)	7F	7F	7F	7F
67	JEDEC ID Code of Qimonda (4)	7F	7F	7F	7F
68	JEDEC ID Code of Qimonda (5)	7F	7F	7F	7F
69	JEDEC ID Code of Qimonda (6)	51	51	51	51
70	JEDEC ID Code of Qimonda (7)	00	00	00	00
71	JEDEC ID Code of Qimonda (8)	00	00	00	00
72	Module Manufacturer Location	xx	xx	xx	xx



HYS72T[64/128]3x0HP-[3/3S/3.7/5]-B
240-Pin Registered DDR2 SDRAM

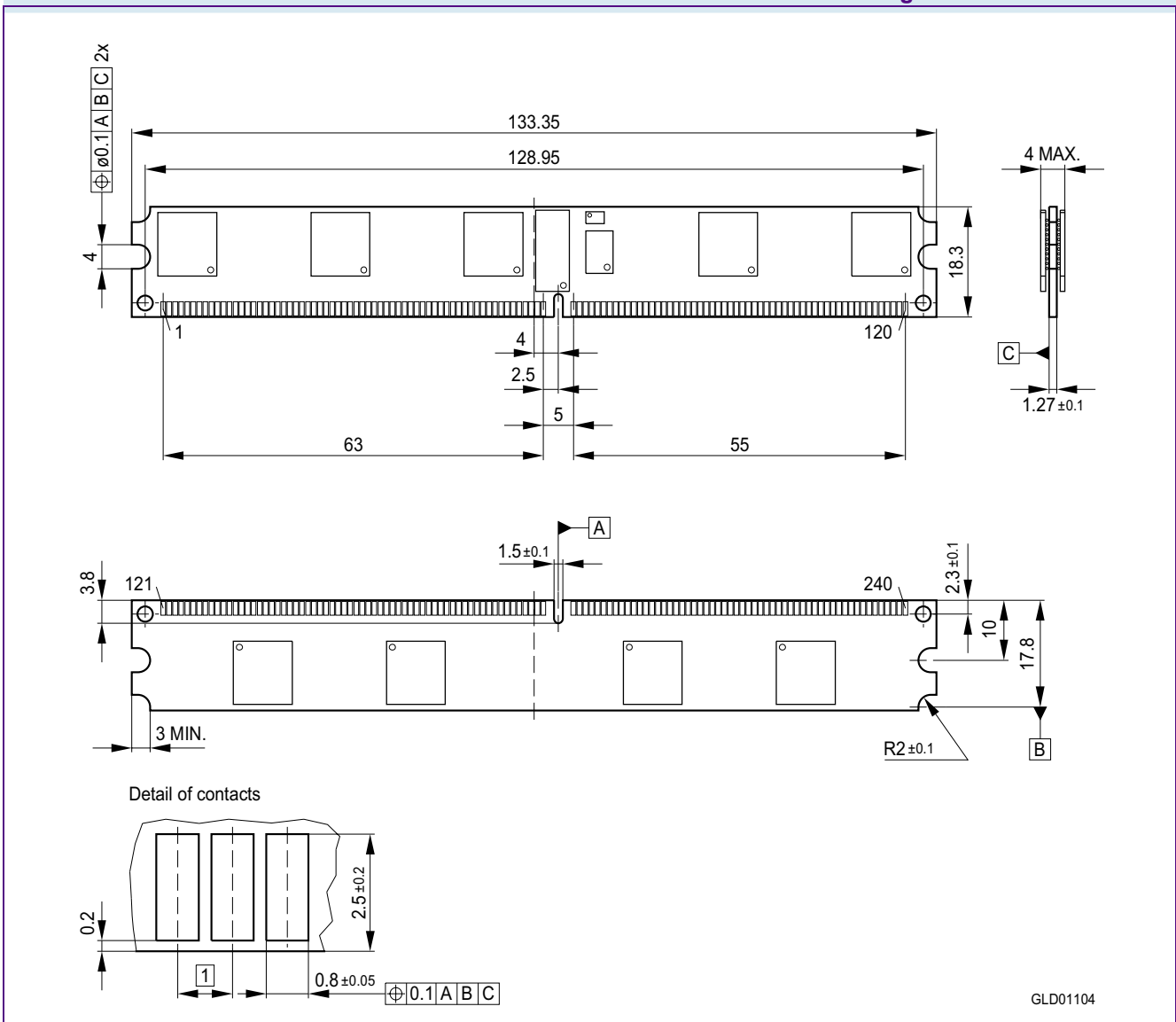
Product Type		HYS72T64300HP-3.7-B	HYS72T128300HP-3.7-B	HYS72T128320HP-3.7-B	HYS72T128320HP-5-B
Organization		512 MB	1 GByte	1 GByte	1 GByte
		×72	×72	×72	×72
		1 Rank (×8)	1 Rank (×4)	2 Ranks (×8)	2 Ranks (×8)
Label Code		PC2-4200R-444	PC2-4200R-444	PC2-4200R-444	PC2-3200R-333
JEDEC SPD Revision		Rev. 1.2	Rev. 1.2	Rev. 1.2	Rev. 1.2
Byte #	Description	HEX	HEX	HEX	HEX
73	Product Type, Char 1	37	37	37	37
74	Product Type, Char 2	32	32	32	32
75	Product Type, Char 3	54	54	54	54
76	Product Type, Char 4	36	31	31	31
77	Product Type, Char 5	34	32	32	32
78	Product Type, Char 6	33	38	38	38
79	Product Type, Char 7	30	33	33	33
80	Product Type, Char 8	30	30	32	32
81	Product Type, Char 9	48	30	30	30
82	Product Type, Char 10	50	48	48	48
83	Product Type, Char 11	33	50	50	50
84	Product Type, Char 12	2E	33	33	35
85	Product Type, Char 13	37	2E	2E	42
86	Product Type, Char 14	42	37	37	20
87	Product Type, Char 15	20	42	42	20
88	Product Type, Char 16	20	20	20	20
89	Product Type, Char 17	20	20	20	20
90	Product Type, Char 18	20	20	20	20
91	Module Revision Code	0x	0x	0x	0x
92	Test Program Revision Code	xx	xx	xx	xx
93	Module Manufacturing Date Year	xx	xx	xx	xx
94	Module Manufacturing Date Week	xx	xx	xx	xx
95 - 98	Module Serial Number	xx	xx	xx	xx
99 - 255	Not used	FF	FF	FF	FF



HYS72T[64/128]3x0HP-[3/3S/3.7/5]-B
240-Pin Registered DDR2 SDRAM

5 Package Outlines

FIGURE 5
Package Outline L-DIM-240-51



GLD01104

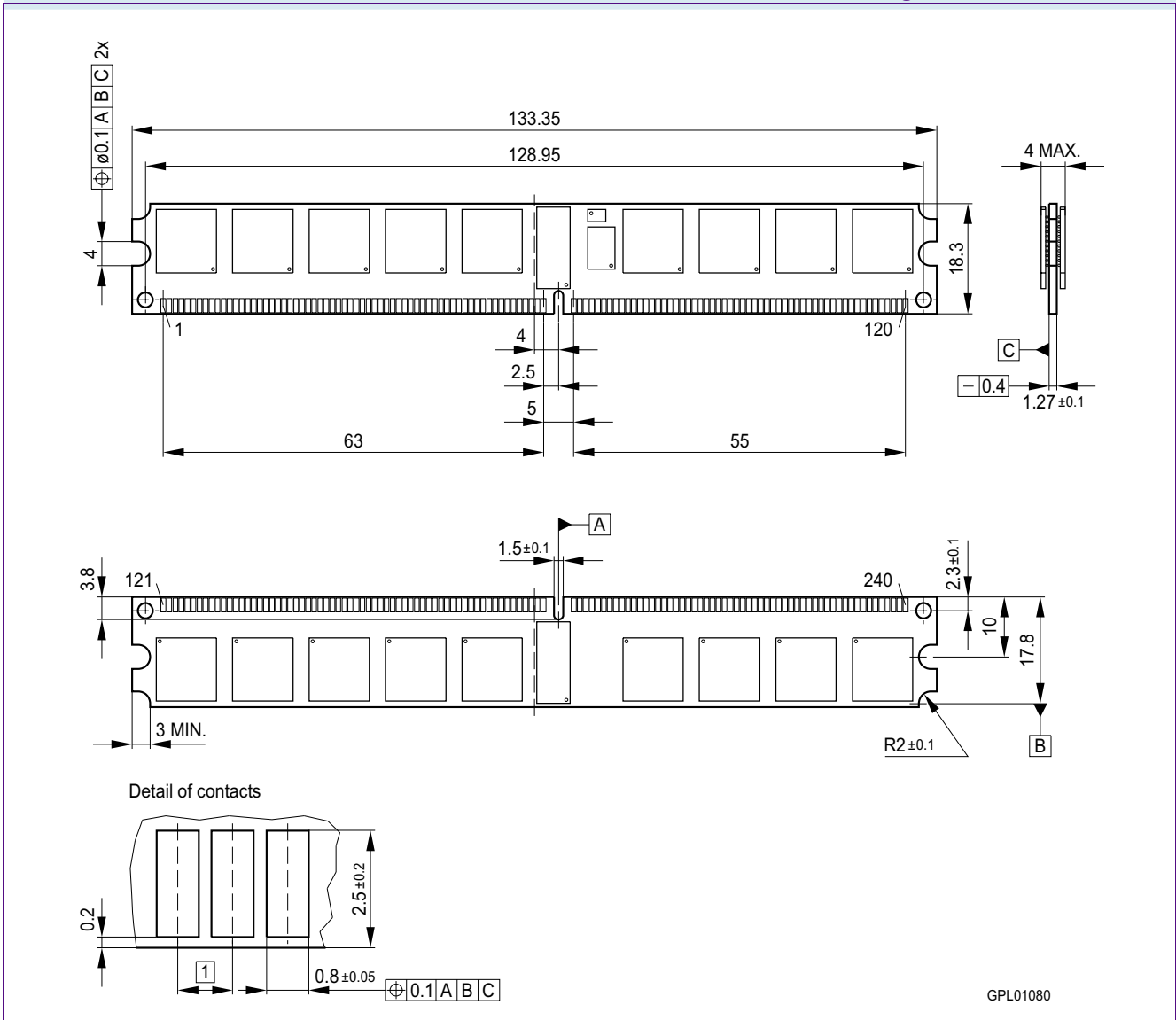
Notes

1. General tolerances +/- 0.15
2. Drawing according to ISO 8015



HYS72T[64/128]3x0HP-[3/3S/3.7/5]-B
240-Pin Registered DDR2 SDRAM

FIGURE 6
Package Outline L-DIM-240-52



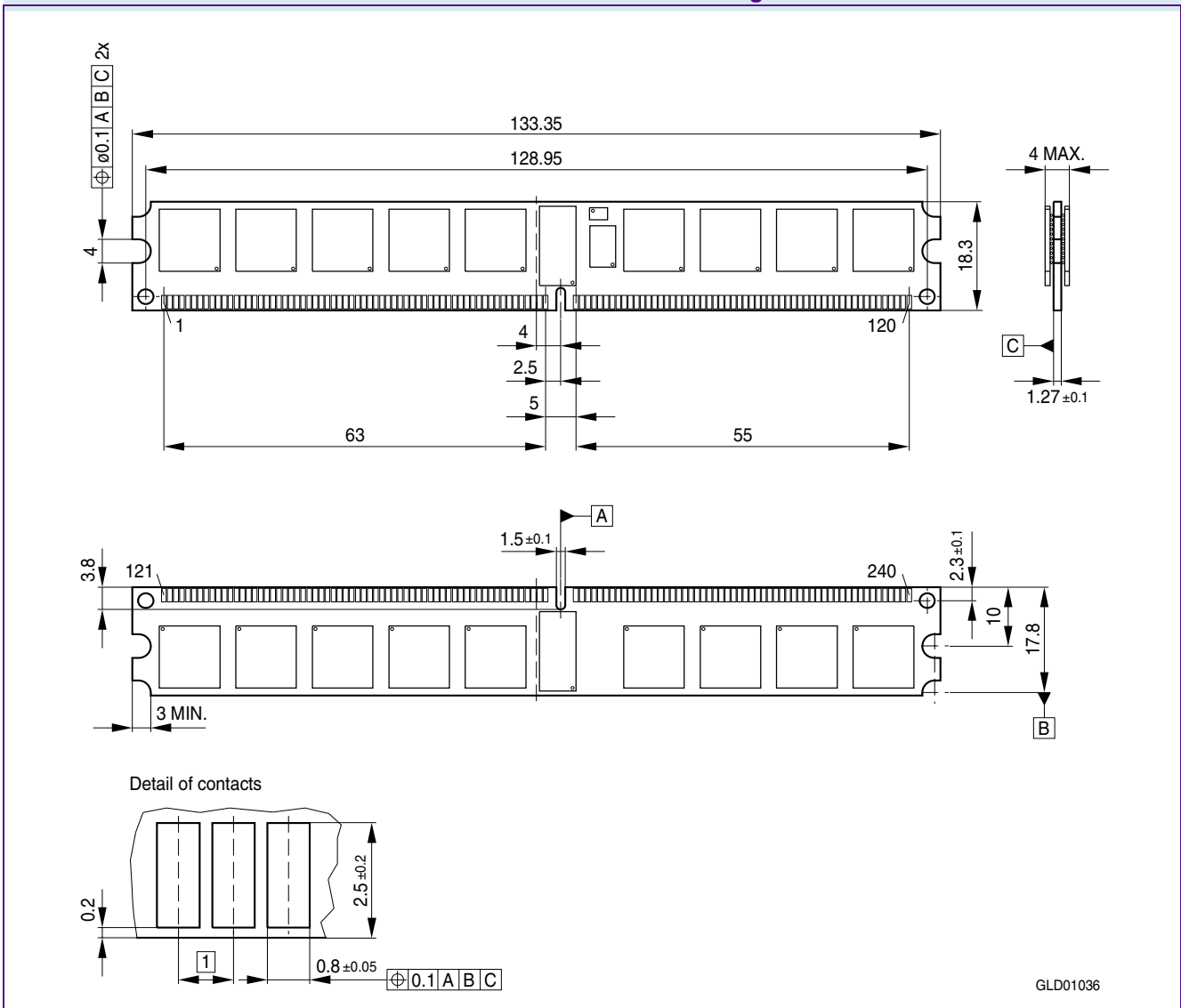
Notes

- 1. General tolerances +/- 0.15
- 2. Drawing according to ISO 8015



HYS72T[64/128]3x0HP-[3/3S/3.7/5]-B
240-Pin Registered DDR2 SDRAM

FIGURE 7
Package Outline Raw Card H - L-DIM-240-53



Notes

1. General tolerances ± 0.15
2. Drawing according to ISO 8015



6 Product Type Nomenclature

Qimonda's nomenclature uses simple coding combined with some proprietary coding. **Table 30** provides examples for module and component product type number as well as the

field number. The detailed field description together with possible values and coding explanation is listed for modules in **Table 31** and for components in **Table 32**.

TABLE 30
Nomenclature Fields and Examples

Example for	Field Number										
	1	2	3	4	5	6	7	8	9	10	11
Micro-DIMM	HYS	64	T	64/128	0	2	0	K	M	-5	-A
DDR2 DRAM	HYB	18	T	512/	16		0	A	C	-5	

TABLE 31
DDR2 DIMM Nomenclature

Field	Description	Values	Coding
1	Qimonda Module Prefix	HYS	Constant
2	Module Data Width [bit]	64	Non-ECC
		72	ECC
3	DRAM Technology	T	DDR2
4	Memory Density per I/O [Mbit]; Module Density ¹⁾	32	256 MByte
		64	512 MByte
		128	1 GByte
		256	2 GByte
		512	4 GByte
5	Raw Card Generation	0 .. 9	Look up table
6	Number of Module Ranks	0, 2, 4	1, 2, 4
7	Product Variations	0 .. 9	Look up table
8	Package, Lead-Free Status	A .. Z	Look up table
9	Module Type	D	SO-DIMM
		M	Micro-DIMM
		R	Registered
		U	Unbuffered
		F	Fully Buffered



HYS72T[64/128]3x0HP-[3/3S/3.7/5]-B
240-Pin Registered DDR2 SDRAM

Field	Description	Values	Coding
10	Speed Grade	-2.5F	PC2-6400 5-5-5
		-2.5	PC2-6400 6-6-6
		-3	PC2-5300 4-4-4
		-3S	PC2-5300 5-5-5
		-3.7	PC2-4200 4-4-4
		-5	PC2-3200 3-3-3
11	Die Revision	-A	First
		-B	Second

1) Multiplying “Memory Density per I/O” with “Module Data Width” and dividing by 8 for Non-ECC and 9 for ECC modules gives the overall module memory density in MBytes as listed in column “Coding”.

TABLE 32
DDR2 DRAM Nomenclature

Field	Description	Values	Coding
1	Qimonda Component Prefix	HYB	Constant
2	Interface Voltage [V]	18	SSTL_18
3	DRAM Technology	T	DDR2
4	Component Density [Mbit]	256	256 Mbit
		512	512 Mbit
		1G	1 Gbit
		2G	2 Gbit
5+6	Number of I/Os	40	×4
		80	×8
		16	×16
7	Product Variations	0 .. 9	Look up table
8	Die Revision	A	First
		B	Second
9	Package, Lead-Free Status	C	FBGA, lead-containing
		F	FBGA, lead-free
10	Speed Grade	-25F	DDR2-800 5-5-5
		-2.5	DDR2-800 6-6-6
		-3	DDR2-667 4-4-4
		-3S	DDR2-667 5-5-5
		-3.7	DDR2-533 4-4-4
		-5	DDR2-400 3-3-3



Table of Contents

1	Overview	3
1.1	Features	3
1.2	Description	5
2	Pin Configuration	7
2.1	Pin Configuration	7
3	Electrical Characteristics	15
3.1	Absolute Maximum Ratings	15
3.2	DC Characteristics	16
3.3	AC Characteristics	18
3.3.1	Speed Grade Definitions	18
3.3.2	AC Timing Parameters	20
3.3.3	ODT AC Electrical Characteristics	29
3.4	Currents Specifications and Conditions	30
4	SPD Codes	34
5	Package Outlines	47
6	Product Type Nomenclature	50

Edition 2006-10
Published by Qimonda AG
Gustav-Heinemann-Ring 212
D-81739 München, Germany
© Qimonda AG 2006.
All Rights Reserved.

Legal Disclaimer

The information given in this Internet Data Sheet shall in no event be regarded as a guarantee of conditions or characteristics ("Beschaffenheitsgarantie"). With respect to any examples or hints given herein, any typical values stated herein and/or any information regarding the application of the device, Qimonda hereby disclaims any and all warranties and liabilities of any kind, including without limitation warranties of non-infringement of intellectual property rights of any third party.

Information

For further information on technology, delivery terms and conditions and prices please contact your nearest Qimonda Office.

Warnings

Due to technical requirements components may contain dangerous substances. For information on the types in question please contact your nearest Qimonda Office.

Qimonda Components may only be used in life-support devices or systems with the express written approval of Qimonda, if a failure of such components can reasonably be expected to cause the failure of that life-support device or system, or to affect the safety or effectiveness of that device or system. Life support devices or systems are intended to be implanted in the human body, or to support and/or maintain and sustain and/or protect human life. If they fail, it is reasonable to assume that the health of the user or other persons may be endangered.