

10 and 20 Watt - SMA Connector Interface

- 10 and 20 Watt Model selection
- Broad Frequency Band Coverage
- Low VSWR - 50 Ohm - High Performance.
- Rugged Stainless Steel Interface Construction

Midwest Microwave's SMA series of medium power coaxial Terminations provide temperature stable, ruggedly built, precision performance in light weight reasonably sized packages using stainless steel connectors and black anodized finned aluminum housings. Input Power levels of 10 and 20 Watts are offered with low VSWR performance.



10 Watts Power

Impedance: 50 Ohms

Frequency: DC - 2.0, DC - 4.0, DC - 8.0, DC and DC - 12.4 GHz

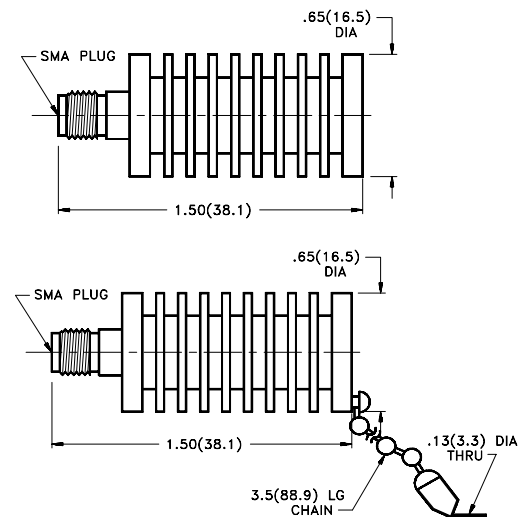
VSWR: 1.20 @ DC - 8.0 GHz, 1.30 @ 8.0 - 12.4 GHz

Power: 20 Watts average @ +25 °C derated linearly to 5 Watts @ +125 °C

Peak Power: 6 Kilowatt (5 microsecond pulse width)

Operating Temperature Range: -54 °C to +125 °C

Female Jack		Female Jack with Chain	
DC - 2.0 GHz	2004 Series	Model Numbers	
TRM-2004-F0-SMA-07		TRM-2004-FC-SMA-07	
DC - 4.0 GHz	2005 Series	Model Numbers	
TRM-2005-F0-SMA-07		TRM-2005-FC-SMA-07	
DC - 8.0 GHz	2006 Series	Model Numbers	
TRM-2006-F0-SMA-07		TRM-2006-FC-SMA-07	
DC - 12.4 GHz	2150 Series	Model Numbers	
TRM-2150-F0-SMA-07		TRM-2150-FC-SMA-07	



20 Watts Power

Impedance: 50 Ohms

Frequency: DC - 2.0, DC - 4.0, DC - 8.0, DC and DC - 12.4 GHz

VSWR: 1.20 @ DC - 8.0 GHz, 1.30 @ 8.0 - 12.4 GHz

Power: 20 Watts average @ +25 °C derated linearly to 5 Watts @ +125 °C

Peak Power: 6 Kilowatt (5 microsecond pulse width)

Operating Temperature Range: -54 °C to +125 °C

Female Jack		Female Jack with Chain	
DC - 2.0 GHz	2143 Series	Model Numbers	
TRM-2143-F0-SMA-07		TRM-2143-FC-SMA-07	
DC - 4.0 GHz	2139 Series	Model Numbers	
TRM-2139-F0-SMA-07		TRM-2139-FC-SMA-07	
DC - 8.0 GHz	2136 Series	Model Numbers	
TRM-2136-F0-SMA-07		TRM-2136-FC-SMA-07	
DC - 12.4 GHz	2134 Series	Model Numbers	
TRM-2134-F0-SMA-07		TRM-2134-FC-SMA-07	

