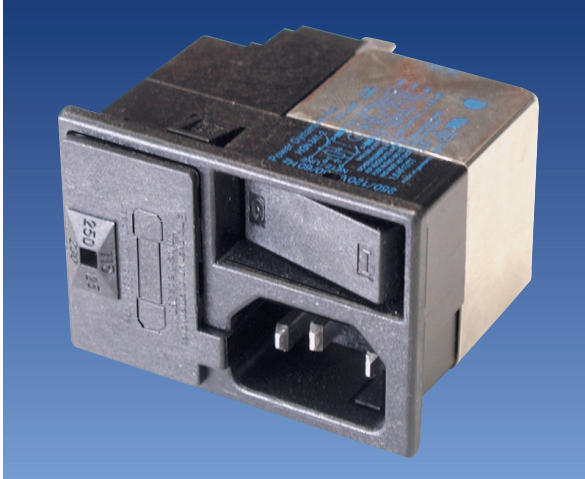


HGN-341 INLET SOCKET WITH SWITCH, VOLTAGE SELECT AND A FUSE HOLDER, SNAP-IN MOUNT



FEATURES

The HGN-341 power module feature an IEC Connector, 2-pole on/off switch, a fuse holder that accepts both European 5 x 20mm or N. American 1/4" x 1 1/4" (3AG) fuse, and a voltage selector with four different voltages (110V, 120V, 220V, 240V). The voltage selector is designed to provide a simple means to change transformer primary connections.

These filters are also available for Medical equipment with low leakage current to comply with UL 544 & UL2601.

APPLICATIONS

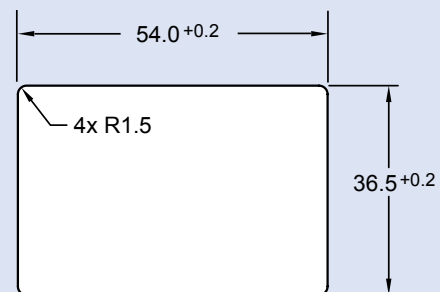
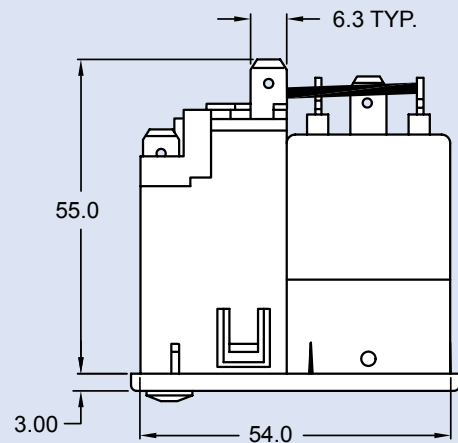
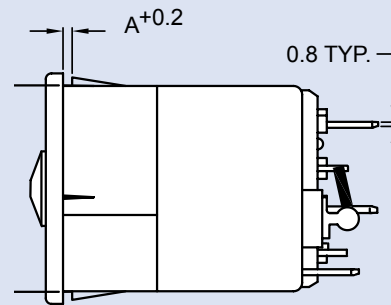
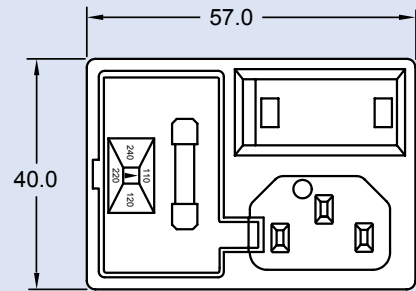
Computer & networking equipment, Measuring & control equipment, Data processing equipment, laboratory instruments, Switching power supplies, other electronic equipment.

TECHNICAL DATA

- Rated Voltage: 125/250VAC
- Rated Current: 1A, 2A, 3A, 4A, 6A,
- Power Line Frequency: 50/60Hz
- Max. Leakage Current each
Line to Ground:
 - @ 250VAC 50Hz: 0.5mA, max
 - @ 250VAC 50Hz: 2 μ A*, max
- Hipot Rating (one minute)
 - Line to Ground: 2250VDC
 - Line to Line: 1450VDC
- Temperature Range: -25C to +85C

* Medical application

MECHANICAL DIMENSIONS (Unit: mm)




RECOMMENDED
PANEL CUTOUT

Specifications subject to change without notice. Dimensions (mm). See Appendix A for recommended power cord. See PDI full line catalog for detailed specifications on power cords.

HGN-341 Series Example & Ordering Code

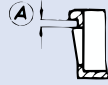
HGN-341 - 1 M - F - 150

CURRENT RATING (A):	= 1
	= 2
	= 3
	= 4
	= 6



SCHMATIC:	STANDARD TYPE	= BLANK
	WITHOUT C(Y); C(X) ONLY	= M

TERMINAL:	QUICK CONNECT = F
	(6.3x0.8)

PANEL THICKNESS:		0.06 (1.5MM)	= 150
		0.062 (1.6MM)	= 160
		0.08 (2.0MM)	= 200

HGN-341 Series Attenuation Tables

Non-Medical Applications

Insertion loss in dB (50 Ohm circuit)

Current Rating	Comm. Mode(L-G) MHz								Diff. mode(L-L) MHz							
	.01	.05	.15	.5	1	5	10	30	.01	.05	.15	.5	1	5	10	30
1A	19	30	40	57	50	50	64	29	9	14	14	45	65	70	60	29
2A	11	25	35	49	49	50	65	30	10	15	16	40	60	70	60	30
3A	5	20	30	41	49	54	60	34	9	14	19	33	54	70	60	33
4A	2	14	21	35	40	50	65	32	9	14	20	20	45	70	60	32
6A	2	10	19	30	34	45	55	35	9	12	19	19	40	70	60	35

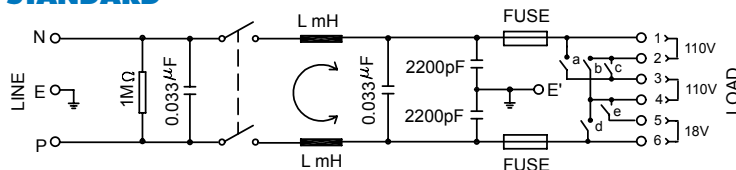
Medical Applications

Insertion loss in dB (50 Ohm circuit)

Current Rating	Comm. Mode(L-G) MHz								Diff. mode(L-L) MHz							
	.01	.05	.15	.5	1	5	10	30	.01	.05	.15	.5	1	5	10	30
1A	9	11	15	50	67	82	71	37	22	32	41	51	48	37	31	22
2A	9	11	11	42	67	82	75	38	18	30	38	40	42	36	30	21
3A	9	15	14	38	55	82	76	35	18	28	33	38	38	30	23	18
4A	9	13	19	19	44	82	79	40	10	18	23	30	32	32	30	22
6A	9	18	21	19	47	84	82	50	8	13	19	27	29	29	29	25

SCHEMATICS

STANDARD



M

