

TCR25XXS SERIES BUTTON RECTIFIER



Absolute Maximum Ratings $T_A = 25^\circ\text{C}$ unless otherwise noted

Single phase half sine-wave 60 Hz, resistive or inductive load.

For capacitive load derate current by 20%.

SYMBOL	PARAMETER	TCR 2500S	TCR 2501S	TCR 2502S	TCR 2504S	TCR 2506S	TCR 2508S	TCR 2510S	UNIT
V_{RRM}	Peak Repetitive Reverse Voltage	50	100	200	400	600	800	1000	V
V_{RMS}	RMS Voltage	35	70	140	280	420	560	700	V
V_R	DC Blocking Voltage	50	100	200	400	600	800	1000	V
T_J	Operating Junction Temperature	175							$^\circ\text{C}$
T_{stg}	Storage Temperature	-65 $^\circ\text{C}$ to 175							$^\circ\text{C}$

Features:


- Compact and molded package for small case configuration
- High current surge capability
- Low cost

Mechanical Characteristics:

- Case: Epoxy molded
- Polarity: Cathode polarity band

Marking Diagram

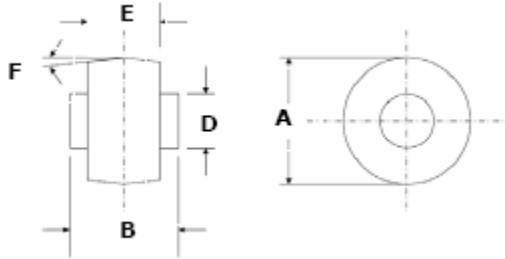


 : Logo
25XXS : Device Code

Note: Marking stamp on side location

Electrical Characteristics $T_A = 25^\circ\text{C}$ unless otherwise noted

SYMBOL	PARAMETER	TCR 2500S	TCR 2501S	TCR 2502S	TCR 2504S	TCR 2506S	TCR 2508S	TCR 2510S	UNIT
$I_{F(A)}$	Maximum Average Forward Rectifier Current $T_A = 25^\circ\text{C}$	25							A
V_{FM}	Maximum Instantaneous Forward Voltage at Rated Current	0.98			1.00		1.05		V
I_{FSM}	Peak Forward Surge Current 8.3ms Single Half Sine-Wave Superimposed on Rated Current	400							A
I_R	Maximum Reverse Leakage Current at Rated DC Blocking Voltage at 25 $^\circ\text{C}$	2.0							μA

Package Outline
Case Outline


Dim	Button			
	Millimeters		Inches	
	Min	Max	Min	Max
A	9.70	10.40	0.38	0.41
B	6.0	6.4	0.24	0.25
D	5.50	5.70	0.22	0.23
E	4.20	4.70	0.17	0.19
F	5° Nom		5° Nom	