



Non-Insulated Terminals Turret Solid Miniature

Please refer to Figure 1300

Part No.	Board Thick	Mounting Hole Dia $+0.003$ -0.001	D Nom	L Nom	Swage Tool
1300A	.031	.116	.114	.075	1300
1300B	.062	.116	.114	.105	1300
1300C	.094	.116	.114	.135	1300
1300D	.125	.116	.114	.165	1300
1300E	.155	.116	.114	.195	1300
1300F	.190	.116	.114	.230	1300
1300G	.253	.116	.114	.293	1300
1300T	4-40	.120	4-40T	.188	1300

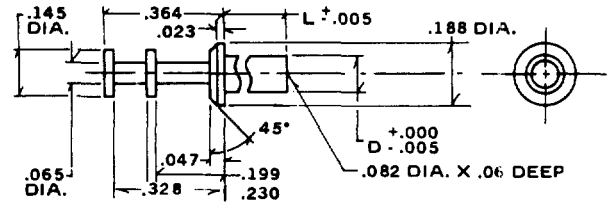


Fig. 1300

Please refer to Figure 2035

Part No.	Board Thick	Mounting Hole Dia $+0.003$ -0.001	D Nom	L Nom	Swage Tool
2035A	.031	.091	.089	.075	2035
2035B	.062	.091	.089	.105	2035
2035C	.094	.091	.089	.135	2035
2035D	.125	.091	.089	.165	2035

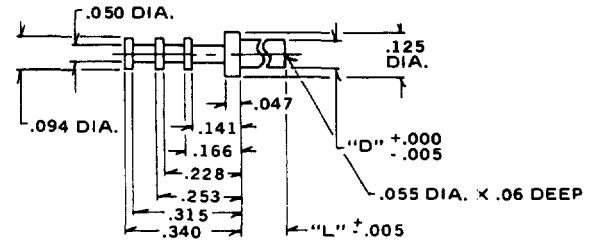


Fig. 2035

Non-Insulated Terminals Turret Solid Subminiature

Please refer to Figure 2061

Part No.	Board Thick	Mounting Hole Dia $+0.003$ -0.001	D Nom	L Nom	Swage Tool
2061AA	.016	.044	.042	.037	2061
2061A	.031	.044	.042	.053	2061
2061B	.062	.044	.042	.084	2061
2061C	.094	.044	.042	.115	2061
2061D	.125	.044	.042	.147	2061

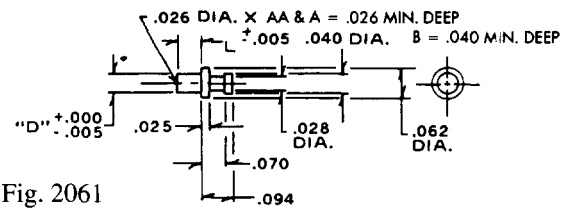


Fig. 2061

Please refer to Figure 2060

Part No.	Board Thick	Mounting Hole Dia $+0.003$ -0.001	D Nom	L Nom	Swage Tool
2060AA	.015	.065	.063	.037	2060
2060A	.031	.065	.063	.053	2060
2060B	.062	.065	.063	.084	2060
2060C	.094	.065	.063	.115	2060
2060D	.125	.065	.063	.147	2060

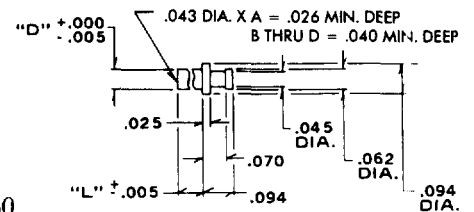


Fig. 2060

Please refer to Figure 2540

Part No.	Board Thick	Mounting Hole Dia $+0.003$ -0.001	D Nom	L Nom	Swage Tool
2540A	.031	.075	.073	.053	2540
2540B	.062	.075	.073	.084	2540
2540C	.094	.075	.073	.115	2540
2540D	.125	.075	.073	.147	2540
2540E	.062	.075	.073	.093	2540

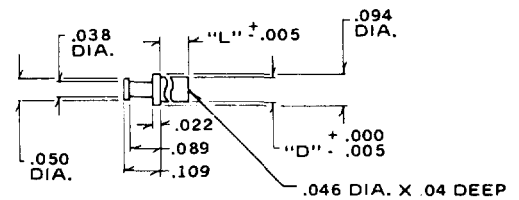


Fig. 2540

Standard Plating Suffix to Part Number
See Page 93 for all plating options.

Terminal
-1 (Ag over Cu)

TOLERANCE: .xxx ±.005, .xx ±.01 (ALL DIMS. BEFORE PLATING)