

**Universal AC Input**

**Wide Range Output Adjustment**

**Power Factor & Harmonic Correction**

**Input Transient Protection**

**Worldwide Safety Agency Approvals**

**Single Wire Current Sharing**

**Optional DIN Rail Mounting**

**Lambda's 3 Year Warranty**

The new JFS Series utilizes Lambda's traditional design techniques ensuring high performance and reliable operation in today's demanding Industrial applications. The JFS Series continues to operate through surges, sags, spikes and lightning strike.

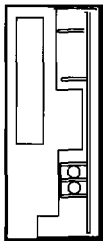
Available in five package sizes from 500-2000 watts with nominal outputs of 24 & 48 volts. Built-in features include Remote ON/OFF, AC Power Fail, DC Good, Input Transient Protection and Active Current Sharing. The JFS Series is designed for worldwide market, the JFS features Power Factor & Harmonic Correction, Universal AC Input, International Agency Approvals and the CE Mark.

Similar products		Page
UF	Low Voltage Outputs	50
LZS/SE	Harsh Environment	58
FE	Hot Plug	66
JWS	Lower Power, Single Output	24

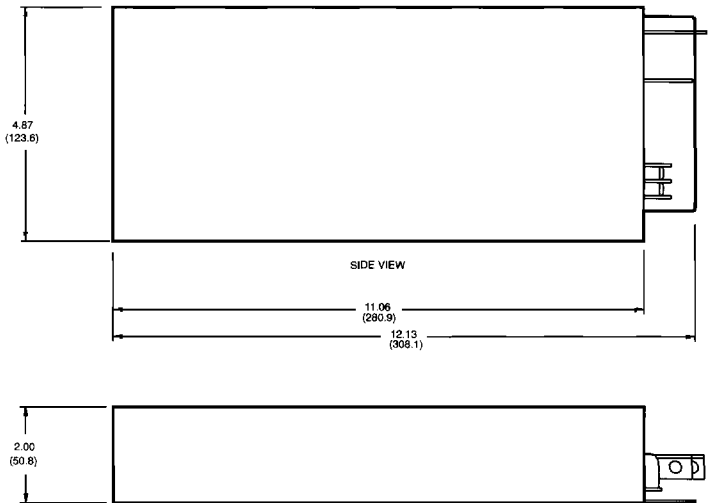
<b>AC Input</b> .....	85 -265VAC, 47-63Hz (170-265VAC for JFS-2000).
<b>DC Input</b> .....	120-330VDC.
<b>Efficiency</b> .....	75% (typical).
<b>Power Factor Correction</b> ....	0.99 (Typical), IEC1000-3-2.
<b>Input Transient Protection</b> ..	EN61000-4 (-2,-3,-4,-5,-6). IEC1000-4 (-2,-3,-4,-5,-6). IEC301- (-2,-3,-4,-5).
<b>EMI</b> .....	Conducted and Radiated per: EN55022-Curve A & FCC Class A.
<b>DC Output Controls</b> .....	Active current sharing is achieved through a single wire connection.
<b>Output Voltage Adj Range</b> ..	Refer to the table.
<b>Line Regulation</b> .....	Less than 1%.
<b>Load Regulation</b> .....	Less than 1%.
<b>Ripple and Noise</b> .....	250 mV pk-pk for 24 volts. 500 mV pk-pk for 48 volts.
<b>Hold-up Time</b> .....	16ms (typical).
<b>Overcurrent Protection</b> .....	Electronic current limiting circuit limits the output current to less than 110% of the full power rating with automatic recovery.
<b>Overvoltage Protection</b> ....	Non-crowbar, non-latching inverter shutdown type OV.
<b>Cooling</b> .....	Internal Fan.
<b>Operating Temperature Range</b>	1.0% from no load to full load. 85-265VAC max.
<b>Storage Temperature</b> .....	-40°C to +85°C.
<b>Humidity</b> .....	10 to 90% RH (non-condensing).
<b>Isolation</b> .....	Input to Output – 3.0kVAC. Input to Chassis (FG) – 2.0kVAC. Output to Chassis (FG) – 500VDC.
<b>Vibration and Shock</b> .....	IEC68-2-6.
<b>Shock</b> .....	IEC68-2-27.
<b>Output Good Signal</b> .....	Conductance Good Signal; Secondary referenced, Open Collector Signal = Good.
<b>Input Good Signal</b> .....	Conductance Good Signal; Secondary referenced, Open Collector Signal = Active.
<b>Output Status Indicator</b> ....	A green LED when DC output is "ON".
<b>Remote On/Off</b> .....	Secondary referenced, Open enables the output.
<b>Remote Sensing</b> .....	Compensates for 0.25 VDC per leg.
<b>Input and Output Connections</b>	Barrier strip with cover or bus-bars.
<b>Safety Agency Approval</b> ....	UL1950, CSA22.2 No. 234, EN60950, IEC950 and CE Mark (Low Voltage Directive).
<b>Din Rail Mounting Bracket</b> ..	Consult factory.
<b>Warranty</b> .....	3 years.

OUTPUT	POWER (W)	MAX CURRENT AMPS AT				MODEL
		40°	50°	60°	71°	
<b>24V</b> (20.0-29.0)	500	20.8	20.8	15.6	10.4	<b>JFS-0500-24</b>
	750	31.2	31.2	23.4	15.6	<b>JFS-0750-24</b>
	1000	41.6	41.6	31.2	20.8	<b>JFS-1000-24</b>
	1500	62.5	62.5	46.8	31.2	<b>JFS-1500-24</b>
	2000	83.3	83.3	62.4	41.6	<b>JFS-2000-24</b>
<b>48V</b> (36.0-56.0)	500	10.4	10.4	7.8	5.2	<b>JFS-0500-48</b>
	750	15.6	15.6	11.7	7.8	<b>JFS-0750-48</b>
	1000	20.8	20.8	15.6	10.4	<b>JFS-1000-48</b>
	1500	31.2	31.2	23.4	15.6	<b>JFS-1500-48</b>
	2000	41.6	41.6	31.2	20.8	<b>JFS-2000-48</b>

JFS500



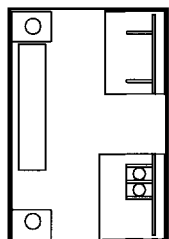
FRONT VIEW



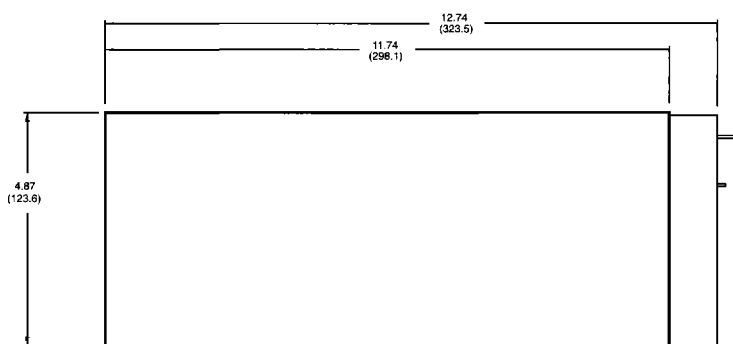
NOTE:  
1. DIMENSIONS ARE IN INCHES EXCEPT DIMENSIONS ( ) ARE IN MM.  
2. WEIGHT: NET 6.0 LBS. SHIPPING 7.0 LBS.

## JFS750/1000

## JFS1500/2000



FRONT VIEW

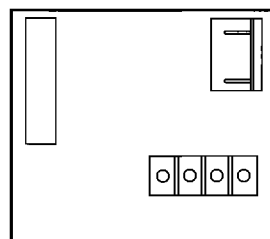


SIDE VIEW

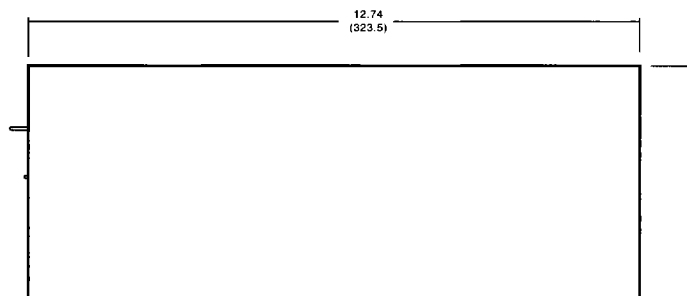


BOTTOM VIEW

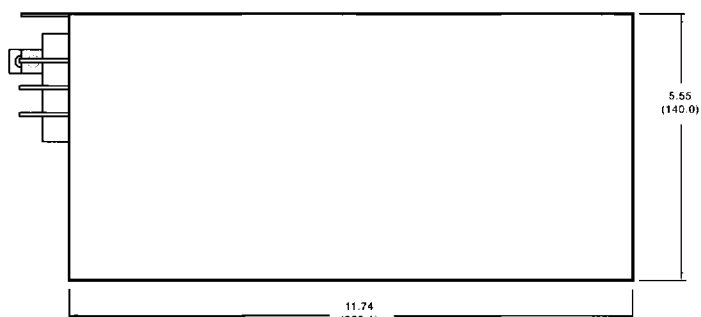
- NOTE:
1. DIMENSIONS ARE IN INCHES EXCEPT DIMENSIONS ( ) ARE IN MM.
  2. WEIGHT: NET 7.0 LBS, SHIPPING 8.0 LBS.



FRONT VIEW



SIDE VIEW



BOTTOM VIEW

- NOTE:
1. DIMENSIONS ARE IN INCHES EXCEPT DIMENSIONS ( ) ARE IN MM.
  2. WEIGHT: NET 9.0 LBS, SHIPPING 10.0 LBS.