

**Micro ATA**

**SPECIFICATIONS**

**Mechanical**

**Retention Force:** 0.145 Kgf min.  
**Durability:** 500 CYCLES

**Electrical**

**Voltage Rating:** 250VAC max.  
**Current Rating:** 1.0Amps max. per pin  
**Contact Resistance:** 30 mΩ max. initial  
**Dielectric Withstanding Voltage:** 1000V AC.  
**Insulation Resistance:** 1,000MΩ min.

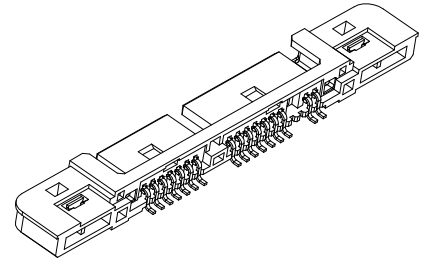
**Physical**

**Housing:** Thermoplastic, UL 94V-0 ,rated in Black Color.  
**Contact:** Brass  
**Plating:** See "ORDERING INFORMATION"  
**Operating Temperature:** -40°C to +105°C

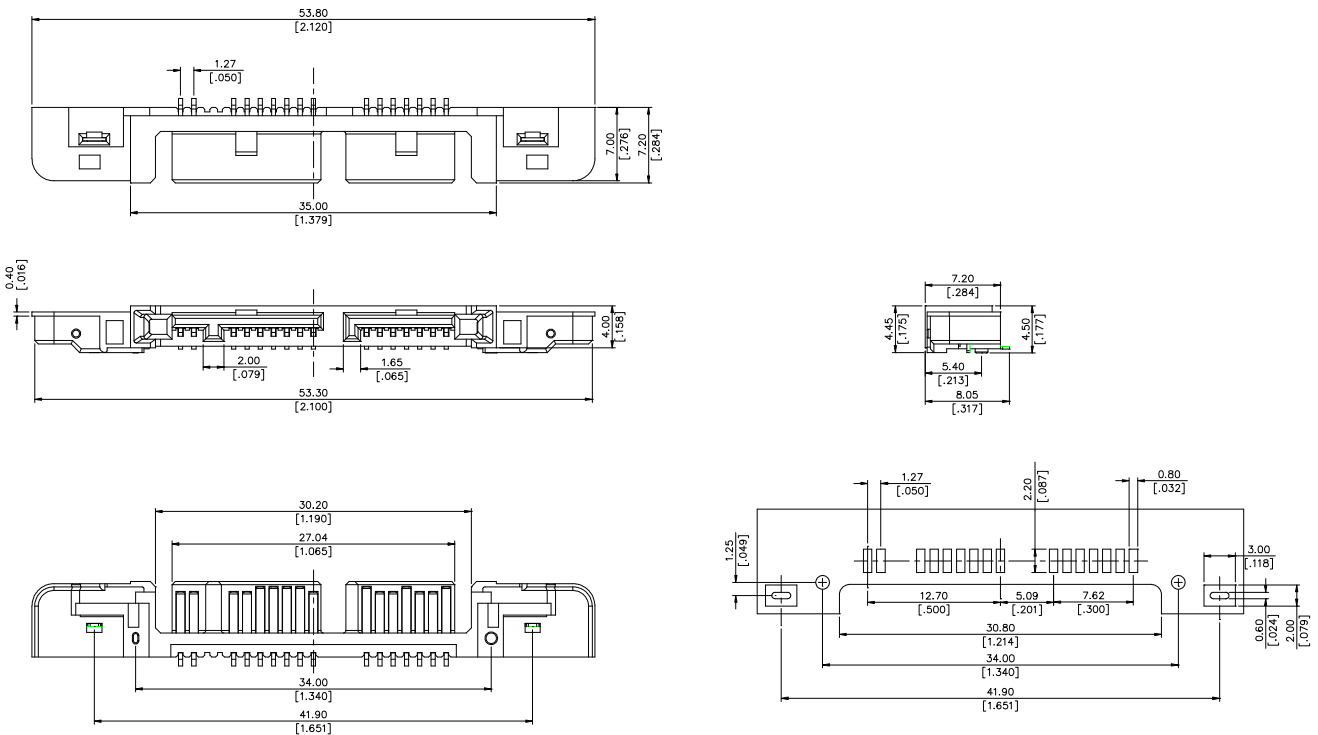
**Micro ATA**

**R/A,SMT Type**

**1.27mm [0.05"] Pitch**



**DRAWING**



**ORDERING INFORMATION**

**PRODUCT NO. MATRIX : LM 1 1 16 1 - B 0 01- 4 F**

