

# EMC Components

## EMC Filters for AC Power Line

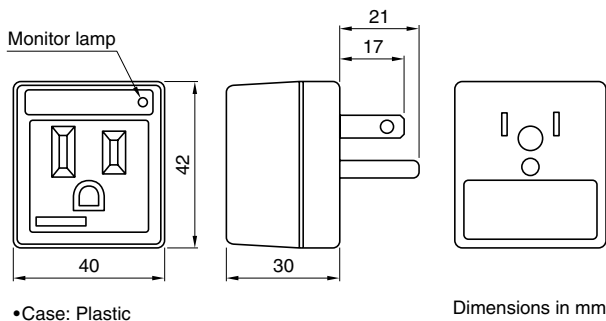
### AC Adapter Type

## ANS-115U Series

### FEATURES

- Can be used with confidence due to a surge absorption operation indicator (monitor lamp). Inlet-socket type EMC filter designed to counter lightning-induced surges and abnormal voltages.
- Contains a surge absorber that boasts high surge attenuation and energy absorption.
- Leakage current is kept at less than 0.5mA.
- This highly effective EMC filter is quite easy to use and maintain since the filter is simply plugged directly into an outlet.

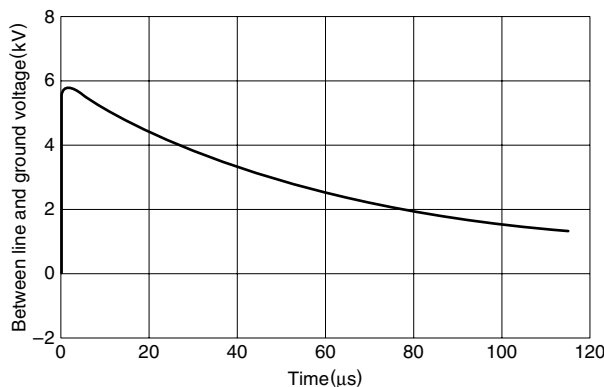
### SHAPES AND DIMENSIONS



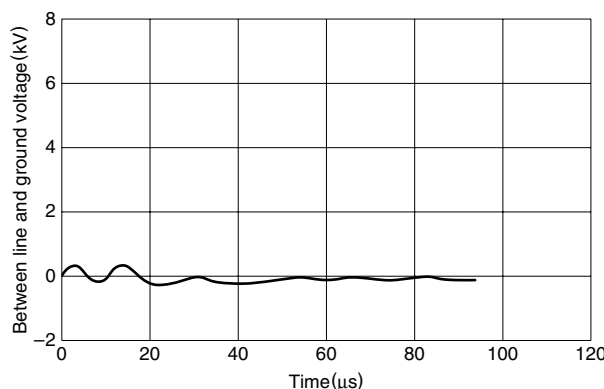
### EXAMPLES FOR EMC SUPPRESSION EFFECTS

(Specimen: Personal computer)

WITHOUT EMC FILTER(1.2/50 $\mu$ s in pulse)



WITH EMC FILTER(ANS-115U)



### SAFETY STANDARDS

Part No.	Approved model No.	UL
ANS-115U	41-26544	E112609

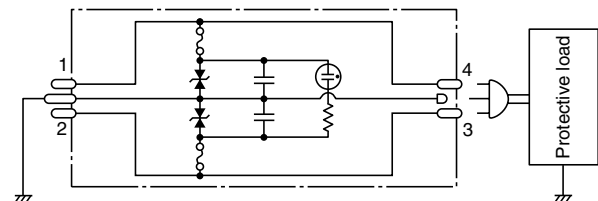
### APPLICATIONS

Various types of computer terminals, data processing equipment, various types of office automation equipment, home electronic data devices, measurement equipment, and other types of electronic devices.

### ELECTRICAL CHARACTERISTICS

Part No.	ANS-115U
Rated voltage Eac (V)	125
Rated current (A)	15
Insulation resistance (M $\Omega$ ) [DC.100V, between terminal and ground terminal]	100 min.
Leakage current (mA) [125V • 60Hz]	0.5 max.
DC resistance (m $\Omega$ )	100 max.
Operating temperature range (°C) [Including self-temperature rise]	0 to +40
Temperature rise (°C)	40 max.
Surge voltages suppression characteristics Eo-p (V)	Between terminal and ground terminal 2000 max. 1000 max.
Weight (g)	80

### CIRCUIT DIAGRAM



### CAUTIONS

- After the ANS-115U plug is inserted into a general commercial power supply, such as a wall socket, etc., be sure to confirm that the monitor lamp becomes illuminated. The upper-right green LED lamp should light up. Installation locations directly illuminated by sunlight should be avoided since it can become difficult to confirm whether the monitor lamp is illuminated or not.
- Always turn the power supply switch to OFF before inserting an equipment plug into the ANS-115U receptacle.
- Surge suppression fails if the monitor lamp goes out. Please replace the failed unit with a new ANS-115U receptacle.
- Internal components of the ANS-115U can be severely stressed during pulse testing by a noise simulator. (Pulse testing should be carried out continuously for no more than 5 minutes.)

