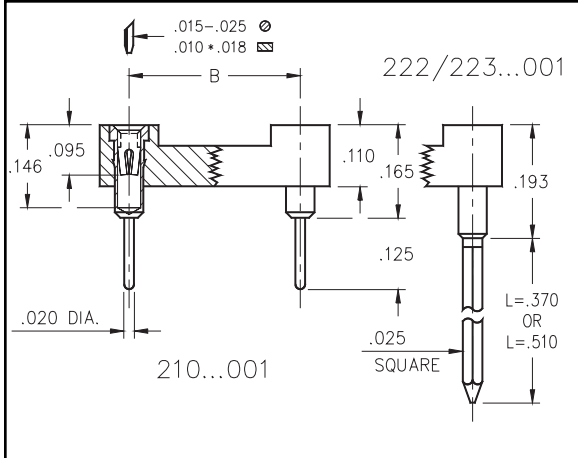


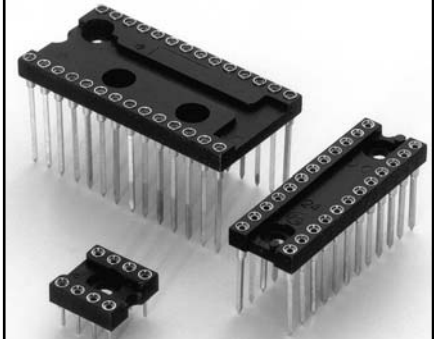


DUAL-IN-LINE SOCKETS Solder Tail and Wrapost Closed Frame

Series 210, 222, 223



- Closed frame insulator withstands high mechanical impact. Low profile.
- Available with standard solder pins or 2-level and 3-level wrapposts.
- Hi-Rel, 4-finger #30 clip. rated at 3 amps. See page 208 for details.
- Uses M-M #1001, 0088, or 0089 pins. See pages 134 & 162 for details.



Total number of pins	Quantity per tube			Ordering Information			
				Solder Tail	2 Level Wrapost L = .370	3 Level Wrapost L = .510	
	A	B	C				
6	0.3	0.3	0.4	67	210-XX-306-41-001	222-XX-306-41-001	223-XX-306-41-001
8	0.4	0.3	0.4	50	210-XX-308-41-001	222-XX-308-41-001	223-XX-308-41-001
10	0.5	0.3	0.4	40	210-XX-310-41-001	222-XX-310-41-001	223-XX-310-41-001
14	0.7	0.3	0.4	28	210-XX-314-41-001	222-XX-314-41-001	223-XX-314-41-001
16	0.8	0.3	0.4	25	210-XX-316-41-001	222-XX-316-41-001	223-XX-316-41-001
18	0.9	0.3	0.4	22	210-XX-318-41-001	222-XX-318-41-001	223-XX-318-41-001
20	1.0	0.3	0.4	20	210-XX-320-41-001	222-XX-320-41-001	223-XX-320-41-001
22	1.1	0.3	0.4	18	210-XX-322-41-001	222-XX-322-41-001	223-XX-322-41-001
24	1.2	0.3	0.4	16	210-XX-324-41-001	222-XX-324-41-001	223-XX-324-41-001
22	1.1	0.4	0.5	18	210-XX-422-41-001	222-XX-422-41-001	223-XX-422-41-001
24	1.2	0.4	0.5	16	210-XX-424-41-001	222-XX-424-41-001	223-XX-424-41-001
24	1.2	0.6	0.7	16	210-XX-624-41-001	222-XX-624-41-001	223-XX-624-41-001
28	1.4	0.6	0.7	14	210-XX-628-41-001	222-XX-628-41-001	223-XX-628-41-001
32	1.6	0.6	0.7	12	210-XX-632-41-001	222-XX-632-41-001	223-XX-632-41-001
36	1.8	0.6	0.7	11	210-XX-636-41-001	222-XX-636-41-001	223-XX-636-41-001
40	2.0	0.6	0.7	10	210-XX-640-41-001	222-XX-640-41-001	223-XX-640-41-001
64	3.2	0.9	1.0	6	210-XX-964-41-001	222-XX-964-41-001	223-XX-964-41-001

**XX= Plating Code
See Below**

**For High
Temperature
Insulators
Add '100'
To End Of
Part Numbers**

SPECIFY PLATING CODE XX=	13	93
Sleeve (Pin)	10μ" Au	200μ" Sn/Pb
Contact (Clip)	30μ" Au	30μ" Au