



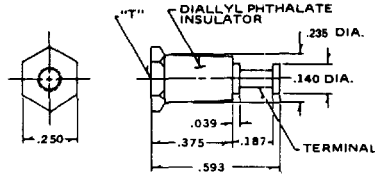
Mil-T-55155 Insulated Terminals

Molded Diayll

PART NO.	"T"	DWV
4551 A	4-40x.16 DEEP	3000
4551 B	6-32x.16 DEEP	3000

MIL-T-55155/19-1 & 3

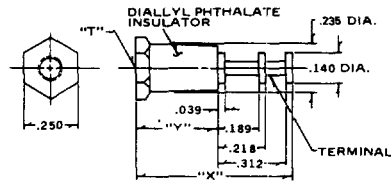
PART NO. 4551



PART NO.	"X"	"Y"	"T"	DWV
4552 A	.718	.375	4-40	3000
4552 B	.937	.594	4-40	6000
4552 C	.937	.594	6-32	6000

MIL-T-55155/20-1, 2 & 4

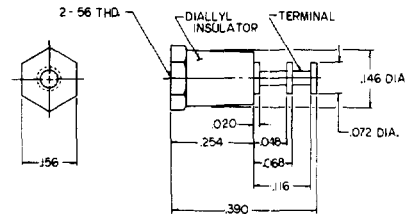
PART NO. 4552



D.W.V. at Sea Level 3,000 VAC

MIL-T-55155/20-3

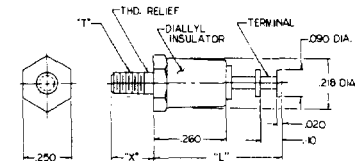
PART NO. 4552 D



PART NO.	"X"	"T"	"L"	DWV
4574 A	.188	4-40	.500	3500
4574 B	.250	4-40	.500	3500
4574 C	.325	4-40	.550	3500

MIL-T-55155/9-3, 4 & 5

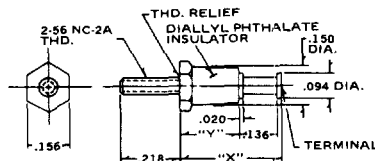
PART NO. 4574



PART NO.	"X"	"Y"	DWV
4550 A	.375	.219	2000
4550 B	.532	.375	3000

MIL-T-55155/18-1 & 2

PART NO. 4550



Standard Plating Suffix to Part Number

See Page 93 for all plating options.

Terminal

-4 (Sb over Cu)

Base

-12 (Ni over Cu)

TOLERANCE: .xxx ±.015 (ALL DIMS. BEFORE PLATING)