

SLC-AN1 Series

LC SIMPLEX ADAPTOR

- for Angle-PC -

TECHNICAL SPECIFICATIONS

Seiko Instruments Inc.

Network Components Business

8, Nakase 1-Chome

Mihama-ku, Chiba-shi, Chiba-ken

261-8507 JAPAN

Telephone: +81-43-211-1211

Facsimile: +81-43-211-8039

SLC-AN1 Series LC SIMPLEX ADAPTOR - for Angle-PC -
TECHNICAL SPECIFICATIONS

Document Number [ACD-25C8-01](#)

[ACD-25C8-01](#) [June 2002](#)

Copyright 2002 by **Seiko Instruments Inc.**
All right reserved.

The information contained herein shall not be reproduced or disclosed to any third party without the express written consent of **SII**.

The Specifications contained herein are subject to change without notice.

SII is a trademark of Seiko Instruments Inc.

Please address any questions, comments, and suggestions to:

Seiko Instruments USA Inc.

Electronics Components Division
2990 West Lomita Boulevard
Torrance, CA 90505, U.S.A.
Phone: +1-310-517-7780
Facsimile: +1-310-517-7792

Seiko Instruments (H.K.) Ltd.

Sales Department
4th & 5th Floor, Wyler Center 2
200 Tai Lin Pai Road, Kwai Chung
N.T., Kowloon, Hong Kong
Phone: +852-2421-8611
Facsimile: +852-2480-5479

Seiko Instruments Singapore pte. Ltd.

Component Sales Department
2, Marsiling Lane,
Singapore, 739144, Singapore
Phone: +65-269-1370
Facsimile: +65-269-9729

Seiko Instruments GmbH

OFC Division
Siemensstraße 9b
D-63263 Neu-Isenburg, Germany
Phone: +49-6102-297-0
Facsimile: +49-6102-297-211

Seiko Instruments Taiwan Inc.

Sales Department
4F, No.40, Sec. 2, Min Chuan E. Rd.,
Taipei 104, Taiwan, R.O.C.
Phone: +886-2-2563-5001
Facsimile: +886-2-2521-9519

TABLE OF CONTENTS

| Section | Page |
|---------------------------|------|
| 1. PROVISION | 1 |
| 1.1 Application limit | 1 |
| 2. PARTS NUMBER | 1 |
| 3. GENERAL SPECIFICATIONS | 2 |
| 3.1 Parts and Materials | 2 |
| 3.2 Physical Dimensions | 2 |
| 3.3 General Tolerances | 2 |
| 3.4 Insertion Loss | 3 |
| 4. PACKING | 3 |
| 5. SHIPPING INSPECTION | 3 |

Table

| | | |
|---------|---|---|
| Table 1 | Parts Number | 1 |
| Table 2 | Parts and Materials | 2 |
| Table 3 | General Tolerance | 2 |
| Table 4 | Insertion Loss and Measurement Conditions | 3 |

Figure

| | | |
|----------|-----------------------------------|---|
| Figure 1 | Insertion Loss Measurement System | 3 |
| Figure 2 | SLC-AN1 Adaptor | 4 |
| Figure 3 | ④ Cap | 5 |
| Figure 4 | Cut-hole dimensions | 5 |

1. PROVISION

1.1 Application Limit

These specifications apply to the SLC-AN1 LC simplex adaptor for Angle-PC supplied by **SII**.

2. PARTS NUMBER

Parts number of the adaptor is shown in Table 1.

Table 1 Parts Number

| MODEL Number | | TYPE Number | | | | |
|--------------|-------------------|-------------|---|---|---|---|
| SLC-AN1 | | 2 | 2 | 1 | 0 | 0 |
| Slit Sleeve | | | | | | |
| 2 | Zirconia | | | | | |
| (Required) | | | | | | |
| 0 0 | | | | | | |
| Marking | | | | | | |
| 1 | without Marking | | | | | |
| 2 | SII | | | | | |
| Cap | | | | | | |
| 1 | White (Plastic) | | | | | |

3. GENERAL SPECIFICATIONS

3.1 Parts and Materials

Parts and the materials are shown in Table 2.

Table 2 Parts and Materials

| No. | Part Name | Qty | Material | Notes |
|-----|-------------|-----|-------------------|----------------|
| ① | Housing A | 1 | PEI | Green, UL94V-0 |
| ② | Housing B | 1 | PEI | Green, UL94V-0 |
| ③ | Slit Sleeve | 1 | Zirconia Ceramics | - |
| ④ | Cap | 2 | PP | White, UL94V-0 |

3.2 Physical Dimensions

Figure 2 shows the SLC-AN1 Adaptor.

Figure 3 shows the part dimensions.

Figure 4 shows the cut-hole dimensions.

3.3 General Tolerances

Permissible deviation in dimensions without tolerance indication is shown in Table 3.

Table 3 General tolerance (JIS B 0405 class m)

| Basic size step [mm] | | Permissible deviation [mm] |
|----------------------|-------|----------------------------|
| Over | Under | |
| 0.5 | 3 | ±0.1 |
| 3 | 6 | ±0.1 |
| 6 | 30 | ±0.2 |

3.4 Insertion Loss

Specifications of insertion loss and measurement conditions are shown in Table 4. Figure 1 shows the measurement system.

Table 4 Insertion Loss and Measurement Conditions

| | | |
|----------------|------------------------|--------------------|
| Parts Number | | SLC-AN1 |
| Insertion Loss | | 0.4 dB or less |
| Conditions | Light Source | LD |
| | Wave Length | 1.31 μm |
| | Master Cord Terminated | APC Polishing |

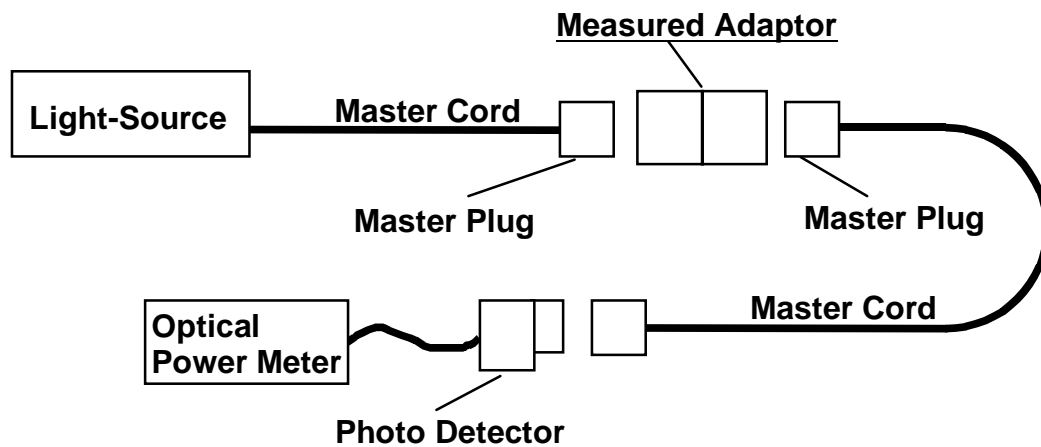


Figure 1 Insertion Loss Measurement System

4. PACKING

The product is packed to prevent damage during shipment.

5. SHIPPING INSPECTION

Insertion loss of the adaptor is inspected before shipping.

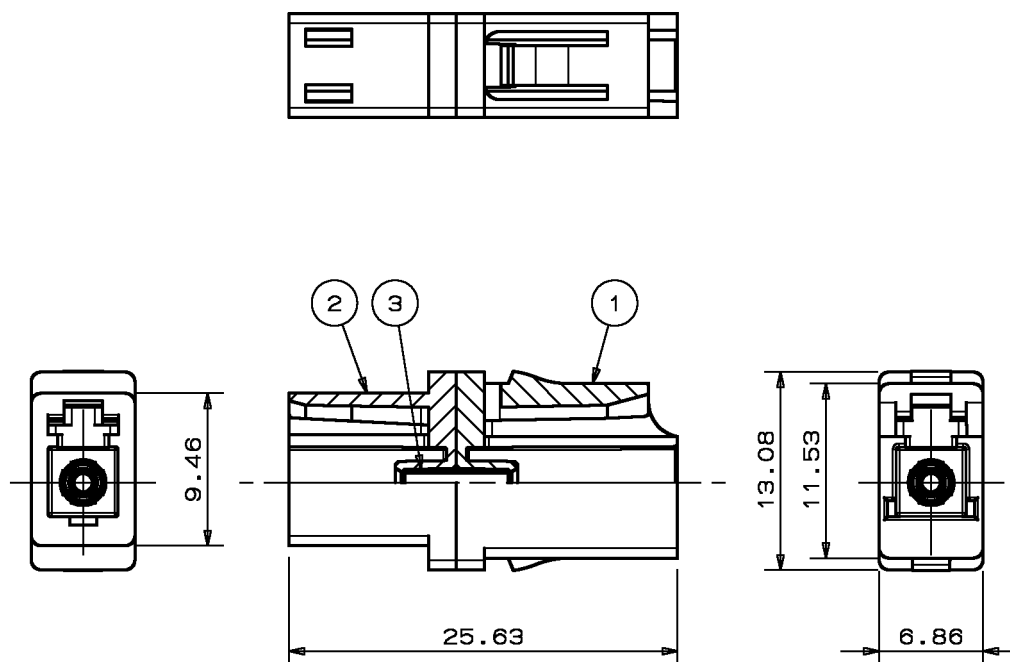
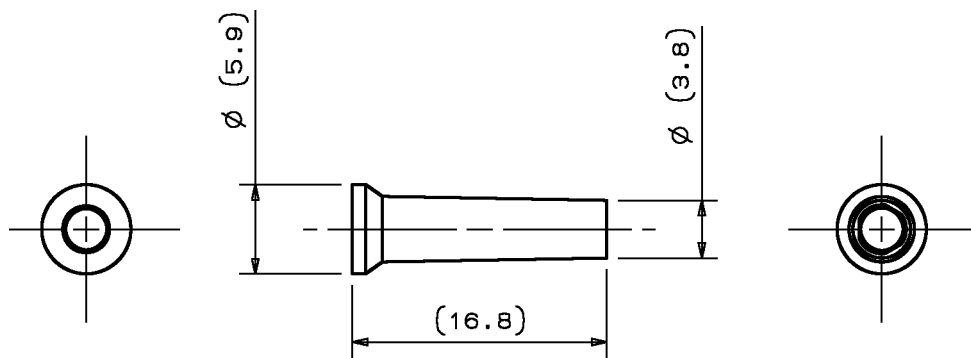


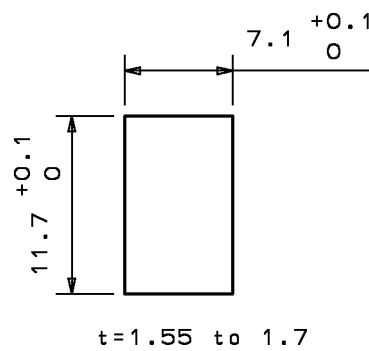
Figure 2 SLC-AN1 Adaptor

Unit: mm



Unit: mm

Figure 3 ④ Cap



Unit: mm

Figure 4 Cut-hole dimensions