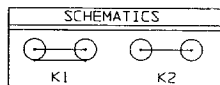


P2 CONN TYPE	FIG NO	PI CONN TYPE							
		BJ20		UBJ20		BJ40		UBJ40	
		K1	K2	K1	K2	K1	K2	K1	K2
CJ20	1A	1	2	3	4	5	6	7	
UCJ20	1A	8	9	10	11	12	13	14	
CJ40	1B	15	16	17	18	19	20		
UCJ40	1B	21	22	23	24	25	26		
BJ26	2A	27	28	29	30	31	32		
UBJ26	2A	33	34	35	36	37	38		
BJ46	2B	39	40	41	42	43	44		
UBJ46	2B	45	46	47	48	49	50		
BJ29	3A	51	52	53	54	55	56		
UBJ29	3A	59	60	61	62	63	64		
BJ49	3B	67	68	69	70	71	72		
UBJ49	3B	75	76	77	78	79	80		
PL20	4A	83	84	85	86	87	88		
UPL20	4A	91	92	93	94	95	96		
PL40	4B	99	100	101	102	103	104		
UPL40	4B	107	108	109	110	111	112		
PL122	5A	119	120	121	122	123	124		
UPL122	5A	121	122	123	124	125	126		
PL123	5B	127	128	129	130	131	132		
UPL123	5B	135	136	137	138	139	140		



DATA CONTAINED IN THIS DOCUMENT IS PROPRIETARY TO TROMPETER ELECTRONICS INC. AND SHALL NOT BE DISCLOSED, COPIED OR USED FOR PROCUREMENT OR MANUFACTURE WITHOUT EXPRESS WRITTEN PERMISSION OF TROMPETER ELECTRONICS INC.

REVISIONS		12-03	SH 1
REV	DESCRIPTION	DATE	APPROVED
C	REVISED PER ECD 14198	7-5-01	

INCH	MM
.005	0.13
.030	0.76
.143	3.63
.156	3.96
.218	5.54
.221	5.61
.281	7.14
.284	7.21
.436	11.07
.440	11.16
.475	12.05
.480	12.19
.500	12.70
.505	12.83
.510	12.83
.570	14.48
.594	15.09
.630	16.00
.635	16.13
.687	17.45
.810	20.57
1.427	36.25
1.452	36.88
1.518	38.56
1.521	38.63

RED INDICATES ORIGINAL

- 21 FOR "K1" VERSION SEE 1-0440-2.UAD142
- 20 FOR "K1" VERSION SEE 1-0440-1.AD142
- 19 FOR "K1" VERSION SEE 1-0423-2.UAD122
- 18 FOR "K1" VERSION SEE 1-0423-1.AD122
- 17 FOR "K1" VERSION SEE 1-0048-2.UBJ48
- 16 FOR "K1" VERSION SEE 1-0048-1.BJ48
- 15 FOR "K1" VERSION SEE 105-1049-2.UBJ2848
- 14 FOR "K1" VERSION SEE 105-1049-1.BJ2848
- 13 FOR "K1" VERSION SEE 105-1049-4.UBJ4828
- 12 FOR "K1" VERSION SEE 105-1049-3.BJ4828
- 11 FOR "K1" VERSION SEE 1-0133-2.UBJ28
- 10 FOR "K1" VERSION SEE 1-0133-1.BJ28
- 9 FOR "K1" VERSION SEE 1-0470-2.UAD48
- 8 FOR "K1" VERSION SEE 1-0470-1.AD48
- 7 FOR "K1" VERSION SEE 105-1044-2.UAD2848
- 6 FOR "K1" VERSION SEE 105-1044-1.AD2848
- 5 FOR "K1" VERSION SEE 1-0469-2.UAD28
- 4 FOR "K1" VERSION SEE 1-0469-1.AD28
- 3 50 & 75 OHM COAXIAL BNC/TNC JACK TO 50 & 75 OHM COAXIAL BNC/TNC JACK/INSULATED AND NONINSULATED BULKHEAD MOUNT JACK/PLUG/ NONINSULATED BULKHEAD MOUNT PLUG/PUSH-ON PLUG
- 2 TFS-1A (NICKEL)
- 1 ALL DIM ARE IN INCHES

23. EXAMPLE OF COMPLETE MODEL NO:
 AD-BJ20-K1-CJ20
 ADAPTER P1 CONN SCHEMATIC P2 CONN

22. EXAMPLE OF COMPLETE PART NO:
 12-03-1
 BASIC PART NO DASH NO

FIG 1A (P1)
 -2 SHOWN
 -24 SHOWN
 FIG 1B (P2)

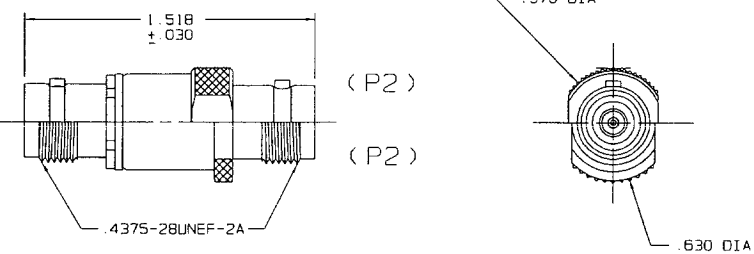
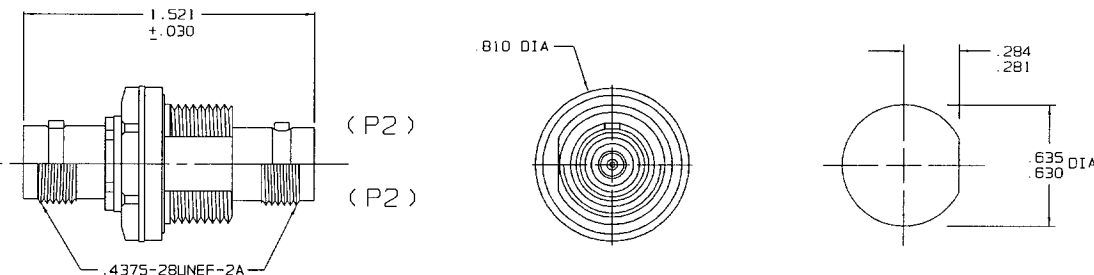
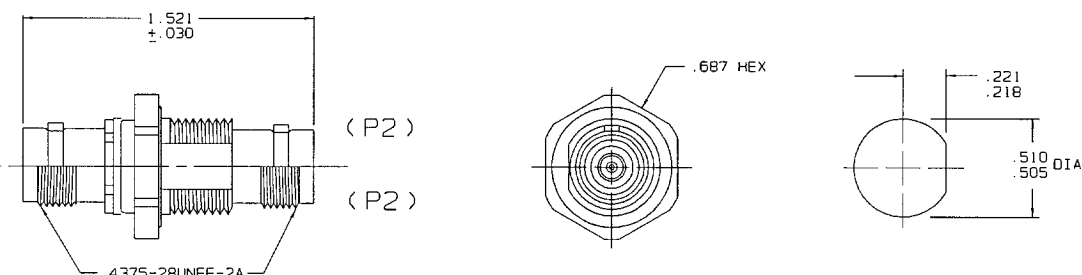


FIG 2A (P1)
 -27 SHOWN
 -42 SHOWN
 FIG 2B (P1)



RECOMMENDED
 PANEL CUTOUT
 FOR -27 THRU -50
 MAX PNL THK .143

FIG 3A (P1)
 -51 SHOWN
 -71 SHOWN
 FIG 3B (P1)



RECOMMENDED
 PANEL CUTOUT
 FOR -51 THRU -82
 MAX PNL THK .218

FIG 4A (P1)
 -83 SHOWN
 -103 SHOWN
 FIG 4B (P1)

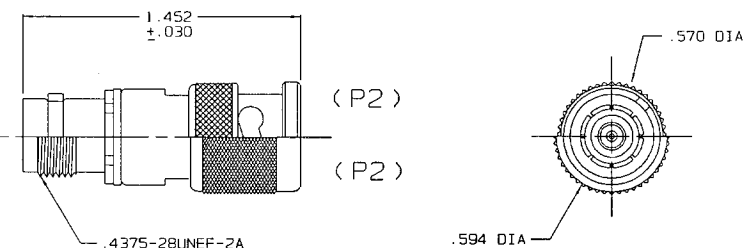
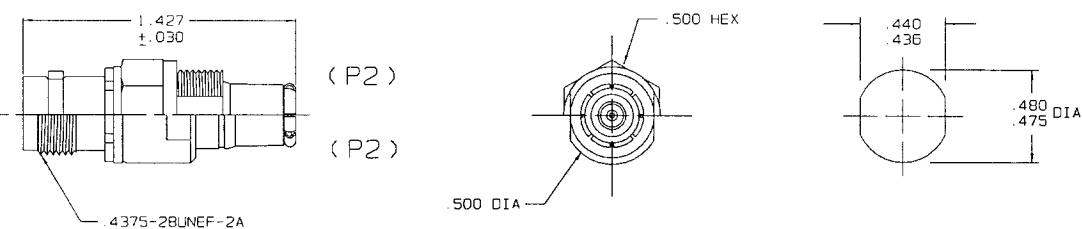


FIG 5A (P1)
 -115 SHOWN
 -131 SHOWN
 FIG 5B (P1)



RECOMMENDED
 PANEL CUTOUT
 FOR -115 THRU -126
 MAX PNL THK .156

INTERPRET DRAWING PER MIL-STD-100 DIMENSIONS ARE IN INCHES AND INCLUDE FINISH THICKNESS UNLESS OTHERWISE SPECIFIED		TOL: UNLESS SPECIFIED .XX ± .02 .XXX ± .010 .XXXX ± .005 ANGLES		
DRAWN: JCM	DATE: 8-23-01	MATERIAL:		
CHECKED: MRS.		FINISH:		TITLE: ADAPTERS: FEMALE BNC/TNC SERIES TO MALE/FEMALE BNC/TNC & MALE/FEMALE BULKHEAD MOUNT BNC/TNC SERIES
MANUF:		SCALE: 2/1		SIZE: B 14949
APPROVED:		DO NOT SCALE DWG		DRAWING NO: 12-03
NEXT ASSY:	CAD FILE NO: 12-03C1	DATE: 4-23-86		REV: C
		SHEET 1 OF 2		