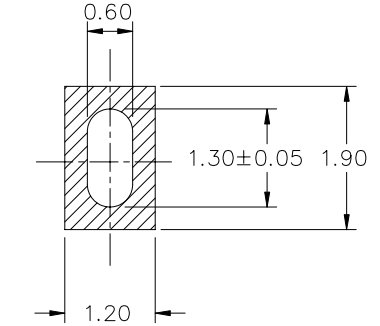
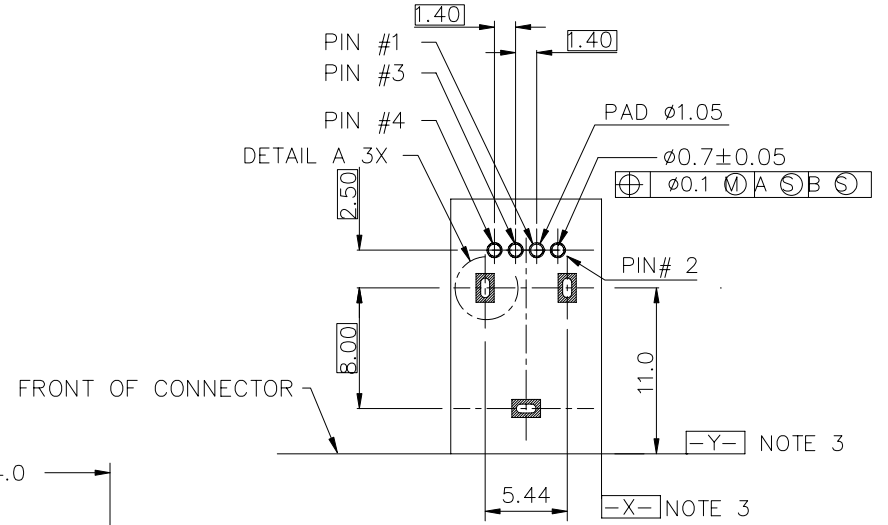
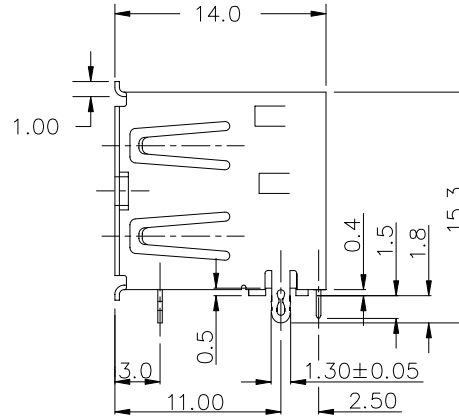
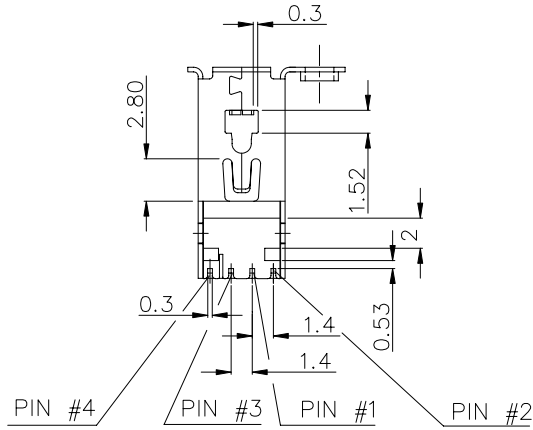
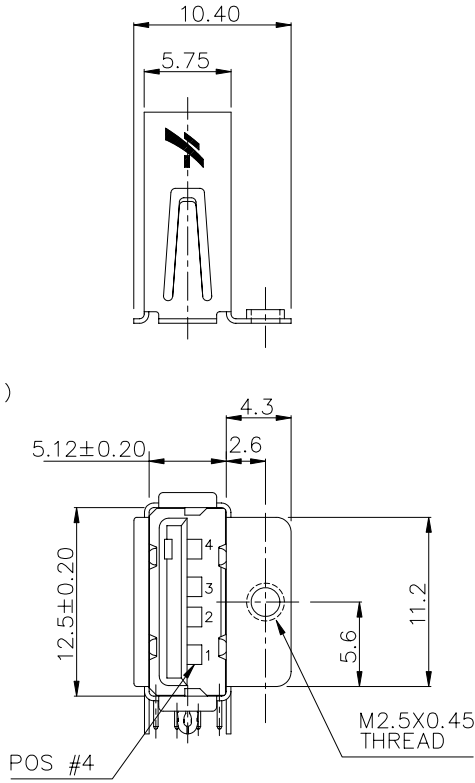
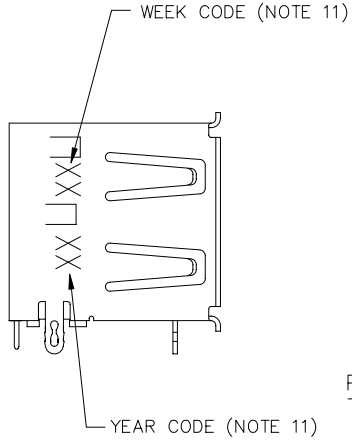


Tous droits strictement réservés. Reproduction ou communication à des tiers interdite sous quelque forme que ce soit sans autorisation écrite du propriétaire.  
Property of c BERG ELECTRONICS.  
Droits de reproduction BERG ELECTRONICS bv

FCI

All rights strictly reserved. Reproduction or issue to third parties in any form or by any means, electronic or mechanical, including photocopying, recording, or by any information storage and retrieval system, is not permitted without written authority from the proprietor.  
Property of c BERG ELECTRONICS.  
Copyright BERG ELECTRONICS bv

PRODUCT NO.  
52319



DETAIL A 5 : 1

PC BOARD MOUNTING DIMENSIONS FOR 4 PIN

mat'l code				tolerance unless otherwise specified		CUSTOMER COPY		FCI	
rev.	ecn no.	dr	date	linear	.0 ±.30	projection	title	www.fciconnect.com	
K	N05-0086	PH	03/22/05		.00 ±.20				
L	N05-0222	PH	07/28/05		.000± 0.10				
				angles	± 2°	unit mm/inch scale	product family USB size dwg no.	code sheet 1 OF 2	
F	T10256	PP	09/20/01	dr	PETER	3/15/00			
G	T20158	WL	05/17/02	enr	R Y LIU	3/15/00			
H	T20190	WL	06/25/02	chr	R Y LIU	3/15/00			
J	T04-0194	WL	05/05/04	appd	JENN TSAO	3/15/00			
sheet	revision	L	L						
index	sheet	1	2						

PDM: Rev:L

STATUS Released

Printed: Oct 21, 2008

PRODUCT NO.

52319

## PRODUCT NUMBER CODE

52319-X 0 X 0 B LF

## HOUSING COLOR OPTION

- 0-WHITE  
1-BLACK

## SHIELD PLATING OPTION

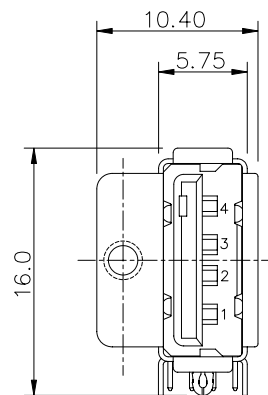
- 1- NICKEL ONLY WITH RIGHT SCREW TYPE 1  
2- TIN COPPER ALLOY WITHOUT SCREW TYPE 2  
3- TIN COPPER ALLOY WITH SCREW TYPE 1  
4- TIN COPPER ALLOY WITH LEFT SCREW TYPE 3

## TERMINAL PLATING OPTION

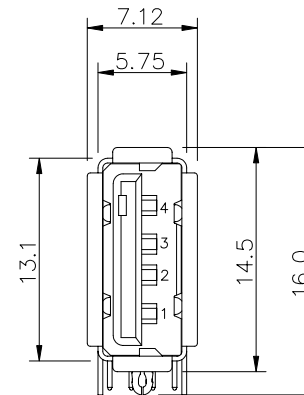
- 0-50u" NI UNDERPLATE  
30u" Au CONTACT AREA  
100u" TIN/LEAD TAIL AREA

## LEAD FREE OPTION

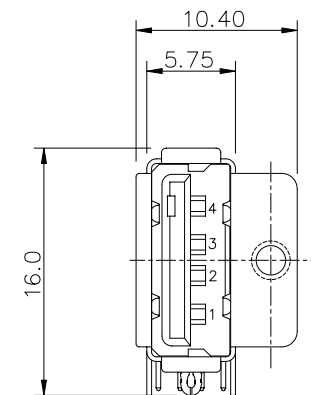
- LF- TIN/LEAD PLATING EVERYWHERE WILL BE REPLACED BY  
PURE TIN PLATING IF "LF" OPTION SELECTED



WITH LEFT SCREW TYPE '3'




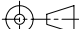

WITHOUT SCREW TYPE '2'



WITH RIGHT SCREW TYPE '1'

## NOTES :

- MATERIAL:  
CONTACTS: COPPER ALLOY  
SHIELD: COPPER ALLOY  
HOUSING: UL 94V-0 THERMOPLASTIC, COLOR: SEE PRODUCT CODE
- PLATING: SEE PRODUCT NUMBER CODE.
- DATUMS & BASIC DIMENSIONS DETERMINED BY CUSTOMERS.
- RECOMMENDED BOARD THICKNESS IS 0.50mm ~ 0.6mm.
- MAXIMUM PANEL THICKNESS TO BE 2.67mm IF MOUNTED BEHIND PANEL
- METAL SHELL SLIVER 0.20 MAX.
- P/N'S WITH SUFFIX "LF" ARE LEAD FREE P/N'S
- PACKING STANDARD GS-14-920 WILL BE APPLIED FOR LEAD FREE P/N'S
- FOR LEAD FREE P/N, THE PRODUCT MEET EUROPEAN UNION DIRECTIVES AND OTHER COUNTRY REGULATION AS DESCRIBED IN GS-22-008
- FOR LEAD FREE P/N, THE HOUSING WILL WITHSTAND EXPOSURE TO 260°C PEAK TEMPERATURE FOR 40 SECONDS IN A CONVECTION, INFRARED OR VAPOR PHASE REFLOW OVEN.
- 52319-1020BP/1020BPLF ARE WITH PRINTED CODE.

mat'l. code				tolerances unless otherwise specified				CUSTOMER COPY		<div> www.fciconnect.com</div>	
ltr	ecn no	dr	date	linear	.0 ± .30			projection 	title USB SIDE MOUNT WITH RIGHT SIDE FLANGE		
L					.00 ± .20						
					.000± 0.10						
				angles	± 2°						
				dr	PETER	3/15/00	MM/INCH 	product family USB		code	
				enr	R Y LIU	3/15/00	scale ← — — →	size dwg no		sheet 2 of	
				chr	R Y LIU	3/15/00		A3	52319		
				appd	JENN TSAO	3/15/00					
sheet index	revision sheet										