

PRODUCT NO.
52366-100DAS/100DASLF

SEE NOTE 8.1

PCB TOP VIEW
(SEE NOTE 8.1)

NOTES:

- 8.0mm MIN. CARD EJECT.
- EJECT TRAVEL: 9.50mm
- MATERIAL:
EJECT HEADER ASS'Y
PLASTIC HOUSING: LCP UL94V-0 BLACK
PIN: COPPER ALLOY
PCB: FR4
PLASTIC GUIDE: POLYPHTHARAMID UL94V-0 COLOR : BLACK.
PLATE: STAINLESS
EMI CONTACT: PHOSPHOR BRONZE
- FINISH
PIN:
UNDER PLATING: 0.5um MIN. Ni
CONTACT AREA: 0.1um MIN. GOLD OVER
0.5um MIN. Pd-Ni
SOLDER TAIL(TIN LEAD OPTION): 2.5um MIN. Sn-Pb
SOLDER TAIL(LEAD FREE OPTION): 2.5um MIN. PURE TIN
GROUND SHIELD :
UNDER PLATING: 0.75um MIN. Ni
CONTACT SURFACE: 0.2 um GOLD.
PUSH ROD LOCATION AND P.C.B. ARE AS
APPEARS INSTALLED
- DIM "X"

4.25±0.1	3.5±0.1	5.0±0.1
OTHERS	36,67	1,17,34,35,51,68

- DO NOT TOUCH AND KEEP CLEAN THE SURFACES
OF PCB OF HEADER ASS'Y.
- SPECIAL FEATURES:
8.1 NO CHAMFER OF VTB
8.2 NO "S"-SLOT
- IF LEAD FREE P/N.THE HOUSING WILL WITHSTAND EXPOSURE TO
260°C PEAK TEMPERATURE FOR 10 SECONDS IN A WAVE SOLDER
APPLICATION WITH A 1.00MM MINIMUM THICK CIRCUIT BOARD.
- IF LEAD FREE P/N.THE PRODUCT MEETS EUROPEAN UNION DIRECTIVES
AND OTHER COUNTRY REGULATIONS AS DISCRIBED IN GS-22-008
- LEAD FREE P/N PACKAGING MEETS GS-14-920 SPECIFICATION

ORDERING INFORMATION

NAME	PART NO.	Q'TY
Ⓐ EJECT HEADER ASS'Y	52366-100DAS/100DASLF	1
Ⓑ MATING RECEPTACLE	73277-101002/101002LF	1

mat'l code				tolerance unless otherwise specified		CUSTOMER COPY		FCJ www.fcjconnect.com	
rev.	ecn no.	dr	date	linear	± 0.30	projection	title	product family : PCMCIA	code
A	T90248	WL	07/06/99						
B	T90287	WL	08/03/99	angles	± 2'	1.5:1	size	dwg no.	TWN sheet 1 of 3
C	T90359	WL	10/14/99						
D	T00105	WL	04/11/00	dr	WENDY CHEN	06/25/99	unit	A3	52366
E	T10151	WL	05/28/01	enrg	STELAR CHU	06/25/99	mm/inch		
F	N05-0037	WB	02/16/05	chr	JOSEPH HSIAO	06/25/99	scale	1 OF 3	1 OF 3
				appd	JENN TSAO	06/25/99			
sheet	revision	F	F	F					
index	sheet	1	2	3					

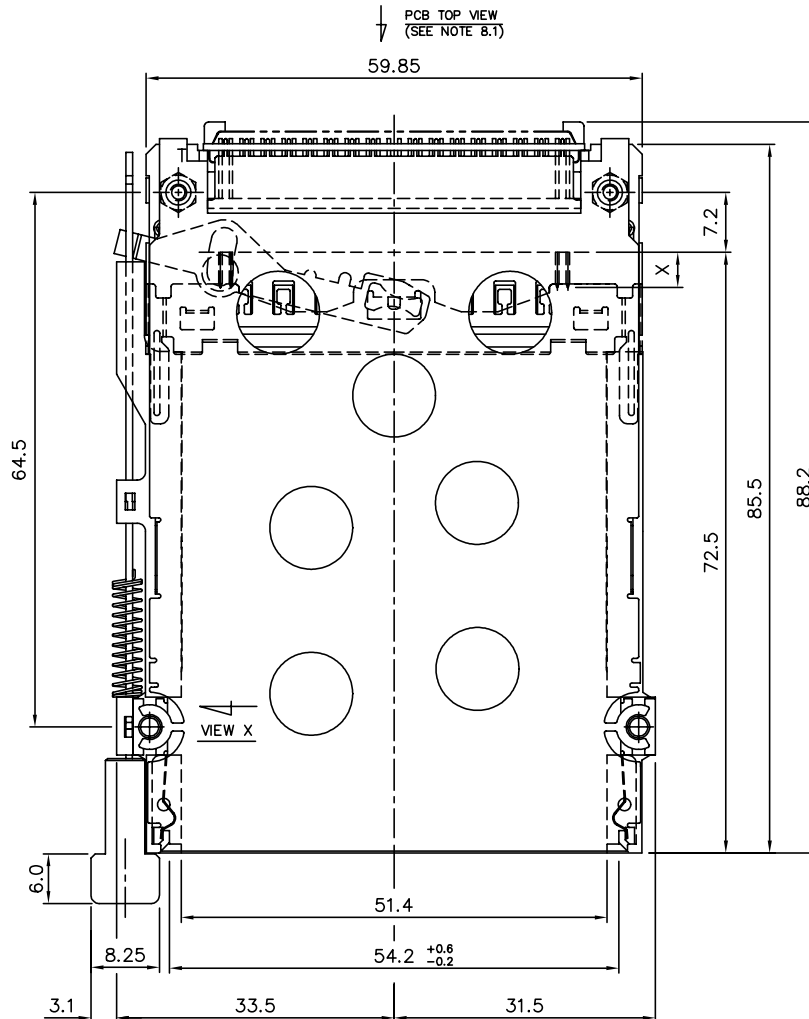
PDM: Rev:F

STATUS:Released

Printed: Sep 03, 2009

PRODUCT NO.
 52366-300DAS/300DASLF

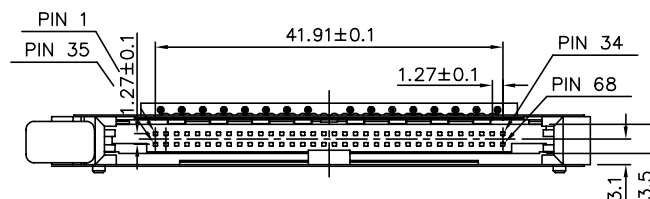
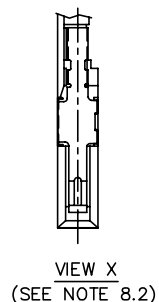
SEE NOTE 8.1



- NOTES:
- 8.0mm MIN CARD EJECT.
 - EJECT TRAVEL: 9.50mm
 - MATERIAL:
 EJECT HEADER ASS'Y
 PLASTIC HOUSING: LCP UL94V-0 BLACK
 PIN: COPPER ALLOY
 PCB: FR4
 PLASTIC GUIDE: POLYPHTHARAMID UL94V-0 COLOR : BLACK.
 PLATE: STAINLESS
 EMI CONTACT: PHOSPHOR BRONZE
 - FINISH
 PIN :
 UNDER PLATING: 0.5um MIN. Ni
 CONTACT AREA: 0.1um MIN. GOLD OVER
 0.5um MIN. Pd-Ni
 SOLDER TAIL(TIN LEAD OPTION): 2.5um MIN. Sn-Pb
 SOLDER TAIL(LEAD FREE OPTION): 2.5um MIN. PURE TIN
 GROUND SHIELD :
 UNDER PLATING: 0.75um MIN. Ni
 CONTACT SURFACE: 0.2 um GOLD.
 - PUSH ROD LOCATION AND P.C.B. ARE AS APPEARS INSTALLED
 - DIM "X"
- | | | |
|----------|---------|------------------|
| 4.25±0.1 | 3.5±0.1 | 5.0±0.1 |
| OTHERS | 36,67 | 1,17,34,35,51,68 |
- DO NOT TOUCH AND KEEP CLEAN THE SURFACES OF PCB OF HEADER ASS'Y.
 - SPECIAL FEATURES:
 8.1 NO CHAMFER OF VTB
 8.2 NO "S"-SLOT
 - IF LEAD FREE P/N.THE HOUSING WILL WITHSTAND EXPOSURE TO 260°C PEAK TEMPERATURE FOR 10 SECONDS IN A WAVE SOLDER APPLICATION WITH A 1.00MM MINIMUM THICK CIRCUIT BOARD.
 - IF LEAD FREE P/N.THE PRODUCT MEETS EUROPEAN UNION DIRECTIVES AND OTHER COUNTRY REGULATIONS AS DISCIBLED IN GS-22-008
 - LEAD FREE P/N PACKAGING MEETS GS-14-920 SPECIFICATION

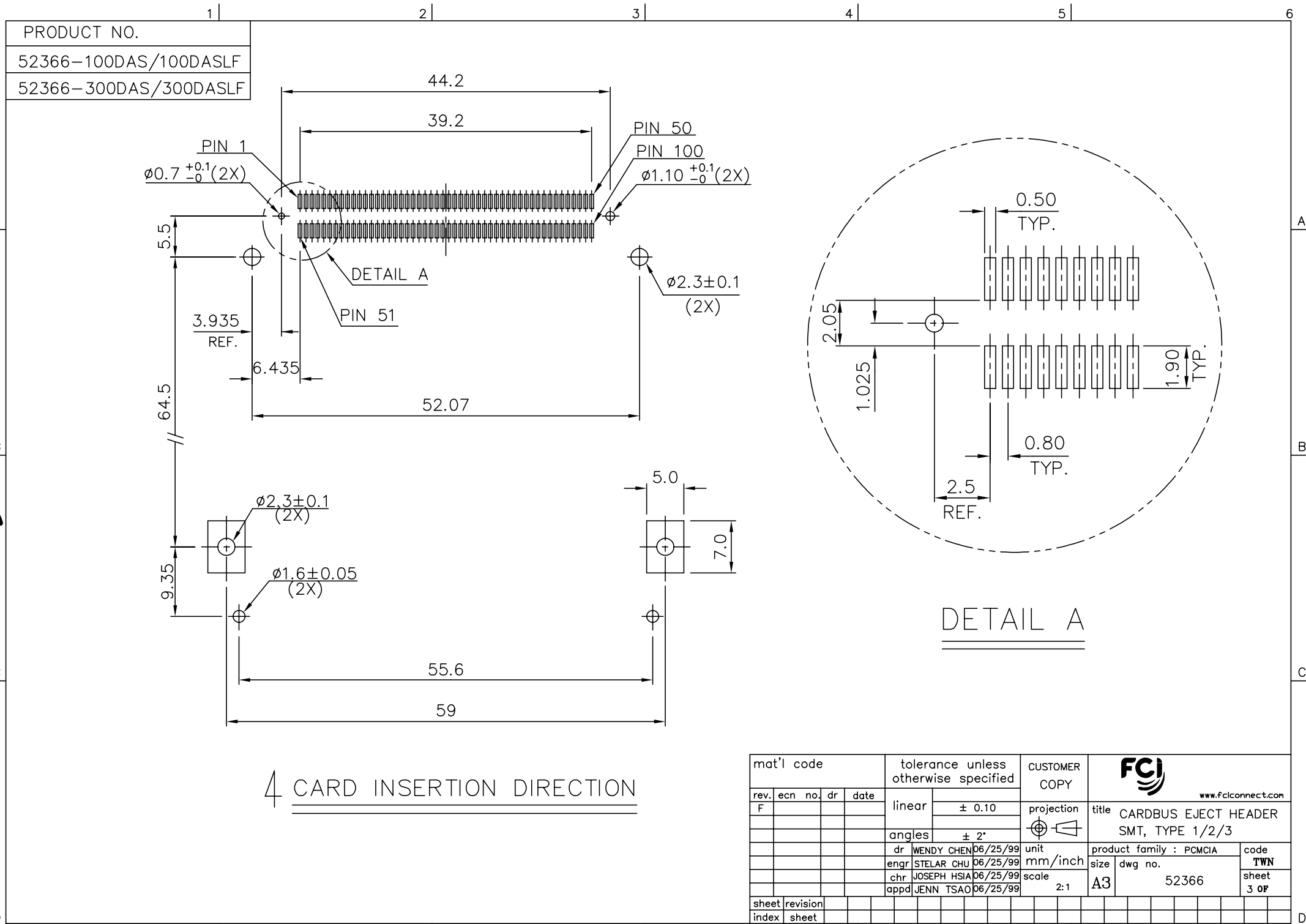
ORDERING INFORMATION

NAME	PART NO.	Q'TY
(A) EJECT HEADER ASS'Y	52366-300DAS/300DASLF	1
(B) MATING RECEPTACLE	73277-101002/101002LF	1



mat'l code				tolerance unless otherwise specified		CUSTOMER COPY		FCI	
rev.	ecn	no.	dr	date	linear	± 0.30	projection	www.fciconnect.com	
F					angles	± 2'		title	
					dr	WENDY CHEN06/25/99	unit	CARDBUS EJECT HEADER	
					enrg	STELAR CHU06/25/99	mm/inch	FORCE- SAVING, TYPE 1/2/3	
					chr	JOSEPH HSIA06/25/99	scale	product family : PCMCIA	
					appd	JENN TSAO06/25/99	1.5:1	size dwg no.	
sheet	revision							A3	
index	sheet							52366	
								code	
								TWN	
								sheet	
								2 OF	

Tous droits strictement réservés. Reproduction ou communication à des tiers sans autorisation écrite du propriétaire.
All rights strictly reserved. Reproduction or issue to third parties in any form without written authority from the proprietor.
Property of FCIBERG ELECTRONICS.
Copyright BERG ELECTRONICS by



mat'l code				tolerance unless otherwise specified		CUSTOMER COPY		<div>FCI</div> <div>www.fciconnect.com</div>	
rev.	ecn	no.	dr	date	linear	± 0.10	projection	title CARDBUS EJECT HEADER SMT, TYPE 1/2/3	
F									
					angles	± 2°		product family : PCMCIA size dwg no. 52366	
					dr	WENDY CHEN06/25/99			
					engr	STELAR CHU06/25/99	mm/inch	code TWN	
					chr	JOSEPH HSIA06/25/99	scale		
					appd	JENN TSAO06/25/99	2:1	sheet 3 OF	
sheet	revision								
index	sheet								