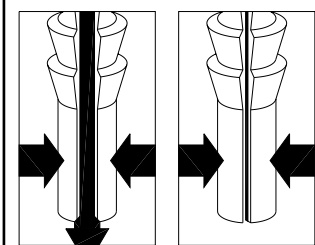


- Compliant tail solderless press-fit: M-M# 4612 or 4613 pins. Use series 446...012 for .060-.120" thick boards, and series 446...013 for .090-.130" boards. See page 131 for details.
- Compliant tail receptacles can be inserted and removed without degradation of the plated-thru-hole.
- Hi-Rel, 4-finger #30 BeCu contact is rated at 3 amps. See page 208 for details.



APPLICATION OF COMPLIANT TAIL PINS

Mill-Max's patented* compliant tail features precision machined pins that are hollow and slotted to conform to a .040" ± .003" diameter PTH. As the pin is inserted, the slot compresses to fit the PTH, thus avoiding damage (see illustration at left). The pin's tail has fine serrations that form a perfect "gas tight" connection that doesn't require soldering. And since the pin doesn't damage the hole, compliant tail sockets and connectors can be easily replaced.

*Patent No. 4,799,904.

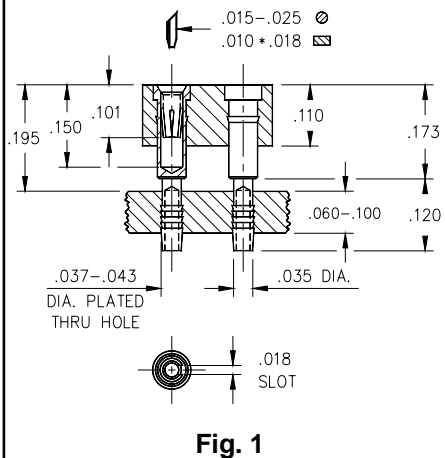


Fig. 1

Ordering Information

Fig. 1

Series 446...012

446-XX-2__-41-012
 Specify # of pins → 02-64

Fig. 2

Series 446...013

446-XX-2__-41-013
 Specify # of pins → 02-64

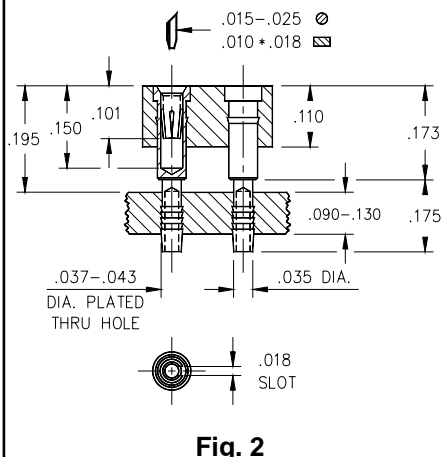


Fig. 2

*XX= Plating Code
 See Below*

SPECIFY PLATING CODE XX=	13	93	99
Sleeve (Pin)	10μ" Au	200μ" Sn/Pb	200μ" Sn/Pb
Contact (Clip)	30μ" Au	30μ" Au	200μ" Sn/Pb