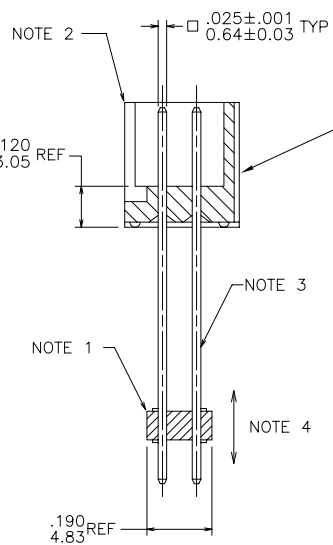
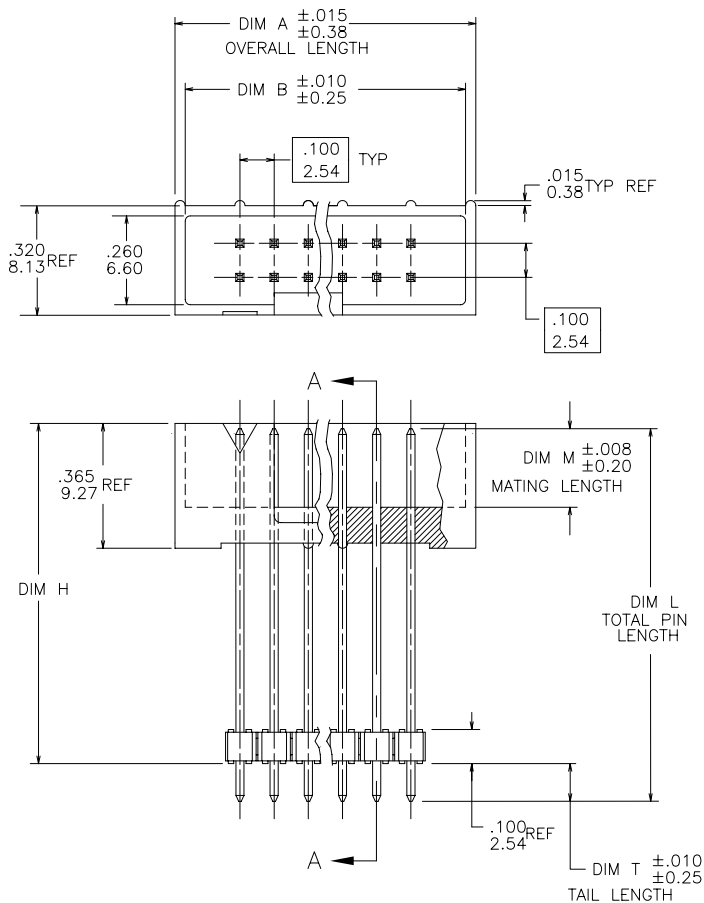


PRODUCT NUMBER
SEE TABLE



2 X 5
STYLE E
POLARIZED

2 X 8 & LARGER
STYLE D
POLARIZED



mat'l. code				surface ISO 1302	tolerance ISO 406 ISO 1101	projection INCH/MM	product family BERGSTIK
ltr	ecm no	dr	date	tolerances unless otherwise specified		scale 1:1	title BERGSTIK® II DHR D/R RR TRACK W.S-LINE HSG
B	V50596	MDF	6/26/96	angles	linear .XX $\pm .01$ / .3		
C	V70959	HTB	6/25/97		.XXX $\pm .005$ / .13		
D	V81229	HTB	6/18/98	0° $\pm 2^\circ$.XXXX $\pm .0020$ / .051		
E	V81713	EPK	9/11/98	dr	M. FETROW	4/26/95	dwg no
F	V81713	EPK	9/11/98	enrg	L. FYE	4/26/95	sheet 1 of 2
G	M05-0175	ERE	8/10/05	chr	L. FYE	4/26/95	size
H	M06-0271	ACS	7/15/06	appd	L. FYE	4/26/95	A3
sheet	revision	H	H				type
index	sheet	1	2				Product Customer Drawing

form: A3

PRODUCT NO NOTE 7	SIZE	OVERALL LENGTH DIM A	DIM B	DIM H	TAIL LENGTH DIM T	MATING LENGTH DIM M	TOTAL PIN LENGTH DIM L	PIN PLATING NOTE 10	
95726-001	2 X 5	.780/19.81	.720/18.28	.995/25.27	.110/2.79	.230/5.84	1.090/27.69	30u"/0.76u Au OVER 50u" /1.27u MIN Ni	
95726-002	2 X 25	2.780/70.61	2.720/69.09	1.023/25.98	.122/3.09	.230/5.84	1.130/28.70	30u"/0.76u Au OVER 50u" /1.27u MIN Ni	
95726-215	2 X 15	1.780/45.21	1.720/43.69	.630/16.00	.110/2.79	.230/5.84	.725/18.42	15u"/0.38u Au OVER 50u" /1.27u MIN Ni	
95726-313	2 X 13	1.580/40.13	1.520/38.61	.730/18.54	.110/2.79	.230/5.84	.825/20.96	15u"/0.38u Au OVER 50u" /1.27u MIN Ni	
95726-320	2 X 20	2.280/57.91	2.220/56.39	.700/17.78	.110/2.79	.230/5.84	.795/20.19	30u"/0.76u Au OVER 50u" /1.27u MIN Ni	
95726-325	2 X 25	2.780/70.61	2.720/69.09	.730/18.54	.110/2.79	.230/5.84	.825/20.96	15u"/0.38u Au OVER 50u" /1.27u MIN Ni	
95726-001HLF	2 X 5	.780/19.81	.720/18.28	.995/25.27	.110/2.79	.230/5.84	1.090/27.69	30u"/0.76u Au OVER 50u" /1.27u MIN Ni	
95726-002HLF	2 X 25	2.780/70.61	2.720/69.09	1.023/25.98	.122/3.09	.230/5.84	1.130/28.70	30u"/0.76u Au OVER 50u" /1.27u MIN Ni	
95726-215HLF	2 X 15	1.780/45.21	1.720/43.69	.630/16.00	.110/2.79	.230/5.84	.725/18.42	15u"/0.38u Au OVER 50u" /1.27u MIN Ni	
95726-313HLF	2 X 13	1.580/40.13	1.520/38.61	.730/18.54	.110/2.79	.230/5.84	.825/20.96	15u"/0.38u Au OVER 50u" /1.27u MIN Ni	
95726-320HLF	2 X 20	2.280/57.91	2.220/56.39	.700/17.78	.110/2.79	.230/5.84	.795/20.19	30u"/0.76u Au OVER 50u" /1.27u MIN Ni	
95726-325HLF	2 X 25	2.780/70.61	2.720/69.09	.730/18.54	.110/2.79	.230/5.84	.825/20.96	15u"/0.38u Au OVER 50u" /1.27u MIN Ni	

NOTES

- BERGSTIK® II HEADER MATERIAL:
GLASS FIBER REINFORCED PCT.
FLAME RETARDANT PER UL 94V-0.
COLOR: BLACK.
- SLIMLINE HEADER MATERIAL: 30% GLASS FILLED PBT,
FLAME RETARDANT PER UL 94V-0.
COLOR: BLUE.
- PIN MATERIAL: PHOS-BRONZE.
- 2LBS/0.9KG MIN PIN RETENTION IN EITHER DIRECTION.
- TWO SIDES OF PIN TIPS NOT PLATED, TYPICAL BOTH ENDS.
- PACKAGED IN POLYBAGS.
- PART NUMBERS WITH "HLF" SUFFIX AT THE END ARE LEAD FREE.
- THESE PRODUCTS MEET EUROPEAN UNION DIRECTIVES AND OTHER COUNTRY REGULATION AS DESCRIBED IN GS-22-008.
- PART NUMBERS WITH "H" SUFFIX WILL WITHSTAND EXPOSURE TO 260°C PEAK TEMPERATURE FOR 20 SECONDS IN WAVE SOLDER, INFRA-RED OR VAPOR PHASE SOLDER PROCESS.
PART NUMBERS WITHOUT "H" SUFFIX WILL WITHSTAND EXPOSURE TO 260°C PEAK TEMPERATURE FOR WAVE SOLDER PROCESS.
- PLATING OPTIONS: MAY BE EITHER GOLD OR GXT PLATED AT MANUFACTURER'S OPTION.
- "THIS PRODUCT HAS 100% TIN PLATING IN THE INTERFACE AND HAS NOT BEEN TESTED FOR WHISKER GROWTH IN ALL INTERCONNECT ENVIRONMENTS."

mat'l. code				surface ISO 1302 ✓	tolerance ISO 406 ISO 1101	projection 	product family BERGSTIK
ltr	ecn	no	dr	date	tolerances unless otherwise specified		title
H					angles	.XX±.01/.3	BERGSTIK® II DHR D/R
					linear	.XXX±.005/.13	RR TRACK W.S-LINE HSG
					0°±2'	.XXXX±.0020/.051	scale 1:1
					dr	M. FETROW 4/26/95	
					enr	L. FYE 4/26/95	
					chr	L. FYE 4/26/95	
					appd	L. FYE 4/26/95	
sheet index	revision sheet						dwg no 95726 type Product Customer Drawing