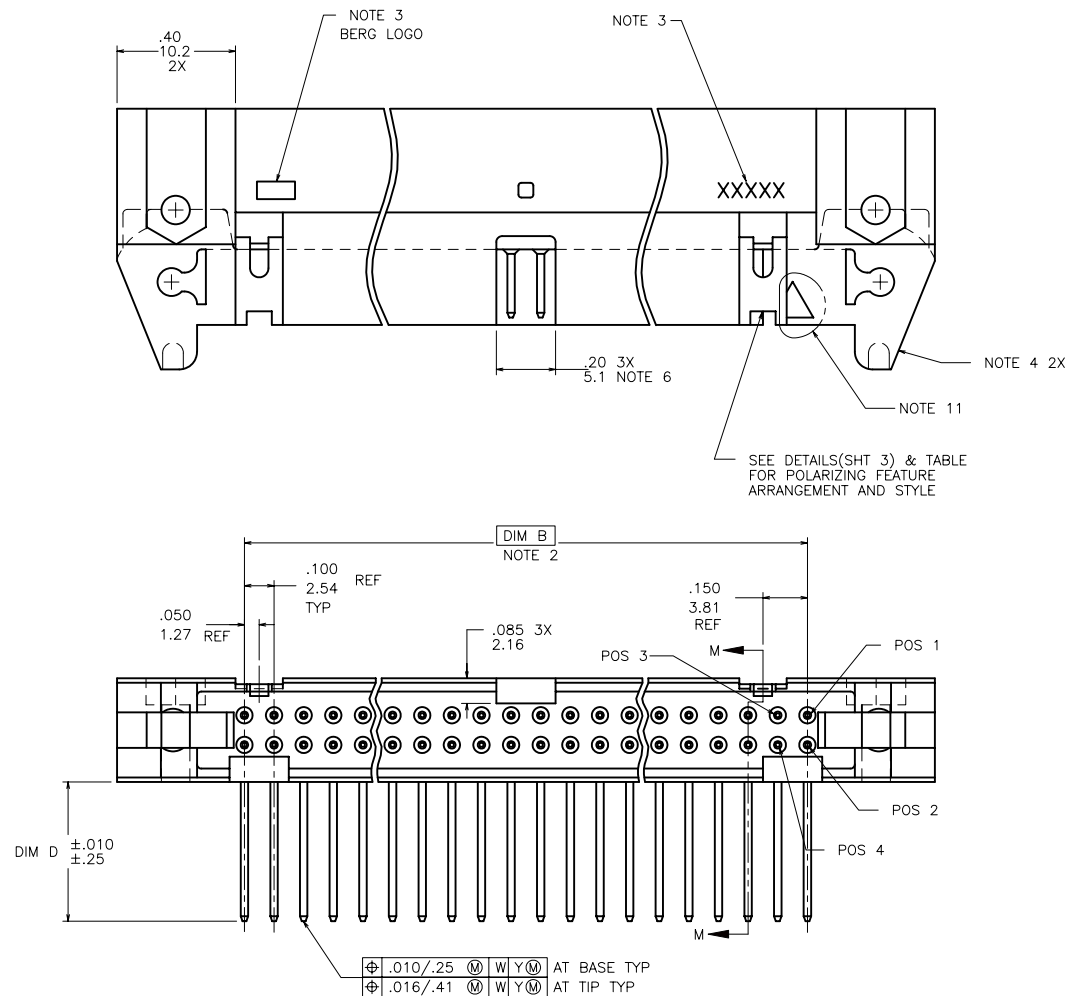


PRODUCT NUMBER  
SEE TABLE

Tous droits strictement reserves. Reproduction ou communication a des tiers  
Interdite sous quelque forme que ce soit sans autorisation écrite du propriétaire.  
Propriete de c FCI. Droits de reproduction FCI.

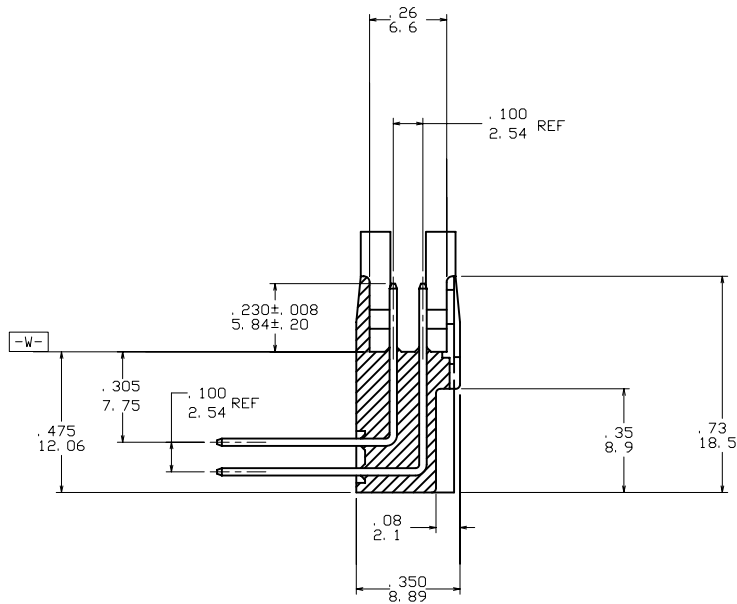


All rights strictly reserved. Reproduction or issue to third parties in any  
form whatever is not permitted without written authority from the proprietor.  
Property of FCI. Copyright FCI.

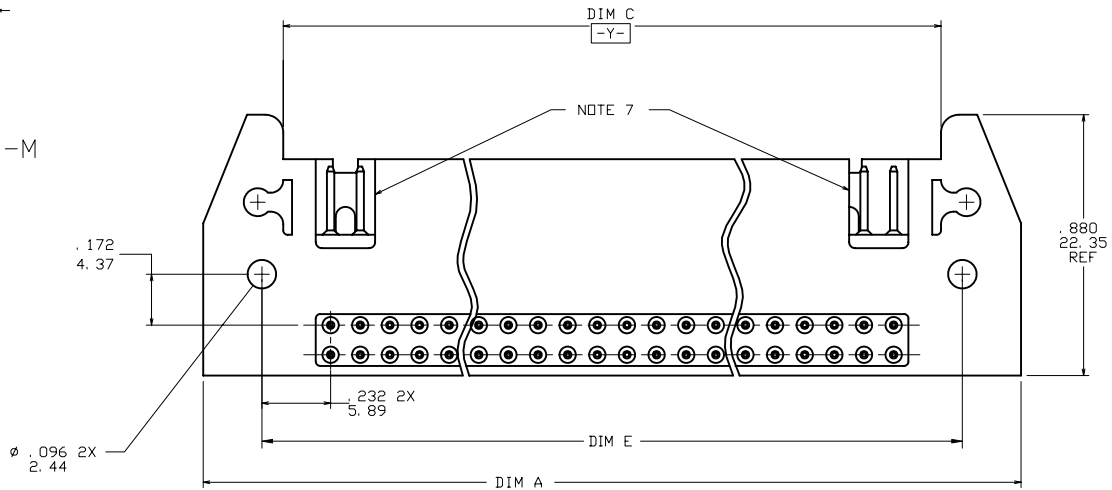


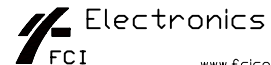
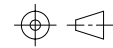
mat'l. code				tolerances unless otherwise specified		CUSTOMER COPY	FCI Electronics www.fciconnect.com		
ltr	ecn no	dr	date	linear	.00±.01/.0±.3		title		
A	V50165	MRC	2/8/95	linear	.xxx ±.005/.00±.13	projection	HEADER, QUICKIE SEA-HORSE RIGHT ANGLE		
B	V94459	DAI	1/10/00		.xxx ±.0020/.000±.051				
C	V00894	EPK	4/27/00	angles	0° ±2°				
D	V01384	DLW	6/8/00	dr	M.CORNMAN 2/8/95	INCH/MM	product family	QUICKIE	code
E	N05-0151	ZC	6/10/05	enr	M.SMYK 2/8/95	scale	size	dwg no	sheet
				chr	M.SMYK 2/8/95	1:1	A	86607	1 of 4
				appd	M.SMYK 2/8/95				
sheet	revision	E	E	E	E				
index	sheet	1	2	3	4				

PRODUCT NO.  
SEE TABLE



SECTION M-M



mat'l. code				tolerances unless otherwise specified		CUSTOMER COPY	 www.fciconnect.com	
ltr	ecn no	dr	date	linear	.00±.01/.0±.3			
E					.XXX ±.005/.00±.13			
					.XXX ±.0020/.000±.051			
				angles	0° ±2°	 INCH/MM	title <b>HEADER, QUICKIE SEA-HORSE RIGHT ANGLE</b>	
				dr	M.CORNMAN 2/8/95			
				enr	M.SMYK 2/8/95		product family QUICKIE	
				chr	M.SMYK 2/8/95		size dwg no	
				appd	M.SMYK 2/8/95	scale 1:1	A 86607	
sheet index		revision sheet					code —	
							sheet 2 of	

cage code

STATUS **Released** 26 Printed: Apr 12, 2011

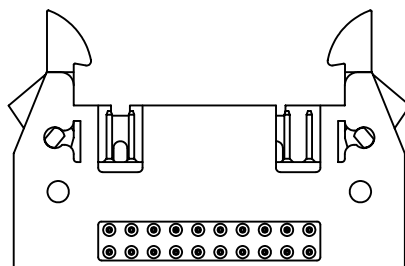
ACAD

PDM: Rev:E

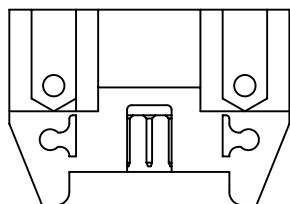
Tous droits strictement reserves. Reproduction ou communication a des tiers  
Interdite sous quelque forme que ce soit sans autorisation écrite du propriétaire.  
Propriete de c FCI. Droits de reproduction FCI.

All rights strictly reserved. Reproduction or issue to third parties in any  
form whatever is not permitted without written authority from the proprietor.  
Property of FCI. Copyright FCI.

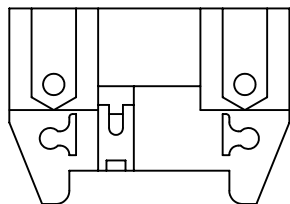
PRODUCT NO.  
SEE TABLE



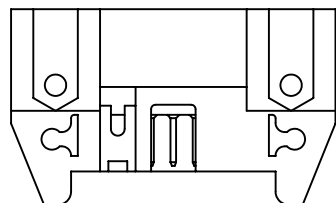
HEADER WITH LATCHES  
(TWO REQUIRED)



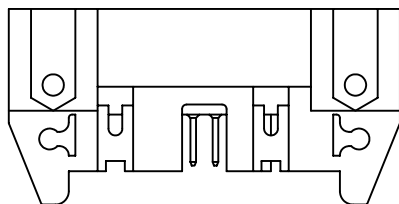
2X5  
STYLE A



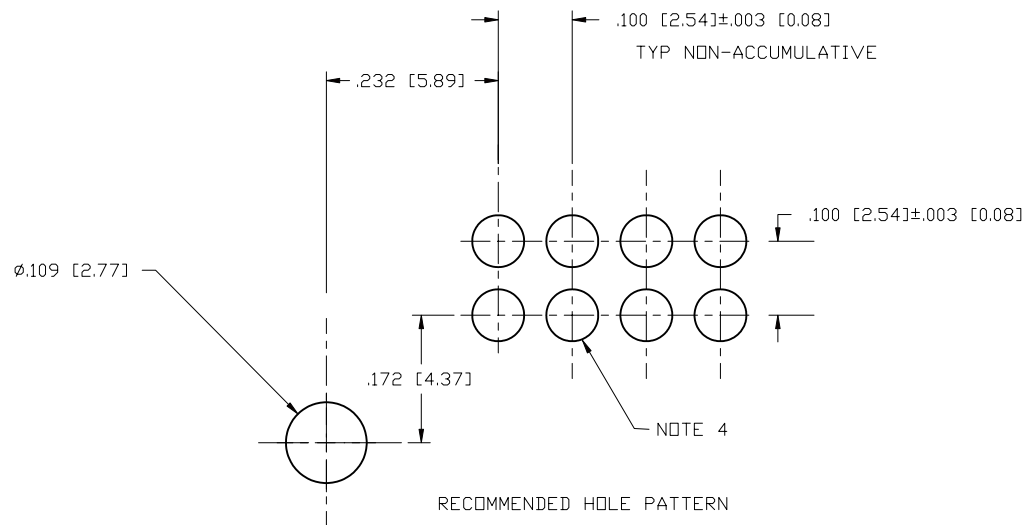
2X5  
STYLE B



2X7  
STYLE C



2X8 THRU 2X30  
(2X10 SHOWN)  
STYLE D



NOTES:

- MOLDING MATERIAL: 30% GLASS FILLED POLYESTER, PBT FLAME RETARDANT PER UL-94VE-0, COLOR-BLUE.
- DIM B** SHALL BE LOCATED SYMMETRICAL TO DATUM -Y-
- LOGO AND 5 DIGIT P/N LOCATED ON THIS SURFACE APPROXIMATELY AS SHOWN.
- .040±.003/1.02±.08 DIA HOLE TYP FOR SQ. PINS. .035±.003/.89±.08 DIA HOLE TYP FOR ROUND PINS.
- THE LATCHES THAT ARE INSTALLED IN SOME HEADERS MUST WITHSTAND A PUSHOUT FORCE OF .5 LB / .2 KG MIN WHILE IN THE INSTALLATION POSITION.
- POLARIZING SLOT NON-EXISTANT ON 2X5 SIZE, STYLE B.
- WINDOWS ON PIN SIDE DO NOT APPEAR ON 2X5 AND 2X7 SIZES.
- FULL TRIANGLE WILL APPEAR ON 2X5 AND 2X7 SIZES.
- 1° MAX DRAFT PERMISSIBLE ON ALL SURFACES UNLESS OTHERWISE SPECIFIED.
- PIN MATERIAL: 3/4 HARD PHOS BRONZE ALLOY UNS C-51000.
- LOGO AND TRIANGLE EXACT LOCATION TO BE OPTIONAL.
- PLATING ON LEAD-IN PORTION OF PIN IS MANUFACTURING OPTION.
- THE HOUSING OF XXXX-XYLLF WILL WITHSTAND EXPOSURE TO 260°C PEAK TEMPERATURE FOR 10 SECONDS IN A WAVE SOLDER PROCESS.
- 86607-\*\*\*LF IS JUST A LEAD FREE PRODUCT.

mat'l. code				tolerances unless otherwise specified		CUSTOMER COPY	FCI Electronics	
ltr	ecn no	dr	date	linear	angular		www.fciconnect.com	
E				.00±.01/.0±.3	0° ±2°	projection	title	
				.XXX ±.005/.00±.13			HEADER, QUICKIE SEA-HORSE	
				.XXX ±.0020/.000±.051			RIGHT ANGLE	
				dr	M.CORNMAN 2/8/95	INCH/MM	product family	QUICKIE
				enr	M.SMYK 2/8/95	scale	size	dwg no
				chr	M.SMYK 2/8/95		A 86607	
				appd	M.SMYK 2/8/95	1:1	code	—
sheet	revision						sheet	3 of
index	sheet							

Tous droits strictement reserves. Reproduction ou communication a des tiers  
Interdite sous quelque forme que ce soit sans autorisation écrite du propriétaire.  
Propriete de c FCI. Droits de reproduction FCI.



All rights strictly reserved. Reproduction or issue to third parties in any  
form whatever is not permitted without written authority from the proprietor.  
Property of FCI. Copyright FCI.

PRODUCT NO.	SIZE	STYLE	DIM A	DIM B	DIM C	DIM E	OMIT PIN
86607-X02 (LF)	2X5	B	1.260/32.00	.400/10.16	.720/18.29	.86/21.8	
↑ -X10 (LF)	2X5	A	1.260/32.00	.400/10.16	.720/18.29	.86/21.8	
-X14 (LF)	2X7	C	1.460/37.08	.600/15.24	.920/23.37	1.06/26.9	
-X16 (LF)	2X8	D	1.560/39.62	.700/17.78	1.020/25.91	1.16/29.5	
-X20 (LF)	2X10	↑	1.760/44.70	.900/22.86	1.220/30.99	1.36/34.5	
-X24 (LF)	2X12		1.960/49.78	1.100/27.94	1.420/36.07	1.56/39.6	
-X26 (LF)	2X13		2.060/52.32	1.200/30.48	1.520/38.61	1.66/42.2	
-X30 (LF)	2X15		2.260/57.40	1.400/35.56	1.720/43.69	1.86/47.2	
-X34 (LF)	2X17		2.460/62.48	1.600/40.64	1.920/48.77	2.06/52.3	
-X40 (LF)	2X20		2.760/70.10	1.900/48.26	2.220/56.39	2.36/59.9	
-X41 (LF)	2X20		2.760/70.10	1.900/48.26	2.220/56.39	2.36/59.9	21
-X42 (LF)	2X20		2.760/70.10	1.900/48.26	2.220/56.39	2.36/59.9	20
-X44 (LF)	2X22		2.960/75.18	2.100/53.34	2.420/61.47	2.56/65.0	
↓ -X50 (LF)	2X25	↓	3.260/82.80	2.400/60.96	2.720/69.09	2.86/72.6	
86607-X60 (LF)	2X30	D	3.760/95.50	2.900/73.66	3.220/81.79	3.36/85.3	

KEY	CONTACT	TAIL	DIM D	PIN SHAPE	LATCH NOTE 9
-0XX(LF)	30u"/.76u Au OVER 50u"/1.27u Ni	40u"/1.02u TIN OVER 50u"/1.27u Ni	.470/11.94	RND	STD
-0XXA(LF)	30u"/.76u Au OVER 50u"/1.27u Ni		.470/11.94	RND	NO
-0XXB(LF)	30u"/.76u Au OVER 50u"/1.27u Ni		.455/11.56	RND	NO
-1XX(LF)	50u"/1.27u Au OVER 50u"/1.27u Ni		.470/11.94	RND	STD
-2XX(LF)	30u"/.76u GXT		↑	RND	STD
-3XX(LF)	30u"/.76u Au OVER 50u"/1.27u Ni			SQ	STD
-4XX(LF)	50u"/1.27u Au OVER 50u"/1.27u Ni			SQ	STD
-5XX(LF)	30u"/.76u GXT		↓	SQ	STD
-6XX(LF)	30u"/.76u GXT		.470/11.94	RND	LP
-7XX(LF)	30u"/.76u GXT		.560/14.22	RND	STD
-8XX(LF)	30u"/.76u Au OVER 50u"/1.27u Ni		.470/11.94	RND	LP
-9XX(LF)	30u"/.76u GXT	40u"/1.02u TIN OVER 50u"/1.27u Ni	.470/11.94	RND	NO

mat'l. code				tolerances unless otherwise specified		CUSTOMER COPY	FCI Electronics www.fciconnect.com	
ltr	ecn no	dr	date	linear	.00±.01/.0±.3		projection 	title HEADER, QUICKIE SEA-HORSE RIGHT ANGLE
E					.xxx ±.005/.00±.13	dr M.CORNMAN 2/8/95		
				.xxxx ±.0020/.000±.051	enr M.SMYK 2/8/95		scale 1:1	size dwg no A 86607
				angles 0° ±2'	chr M.SMYK 2/8/95	appd M.SMYK 2/8/95		
sheet	revision							
index	sheet							