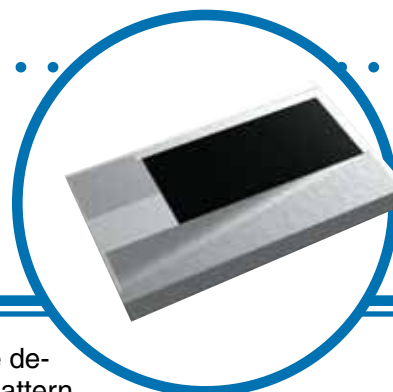


# Fixed Surface Mount Microwave Line Terminators

## PCS-S Series

- 3 GHz Operation
- 1206 and 1612 chip size
- VSWR < 1.1 @ 3GHz (50)

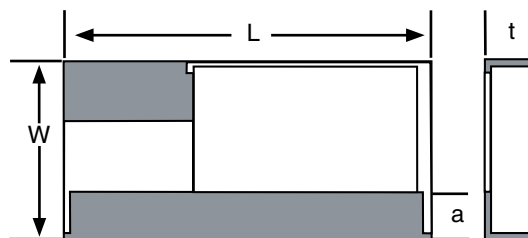


The PCS-S series fixed surface mount microwave terminators are designed with a terminal configuration that permits a reduced land pattern. This series exhibits excellent high frequency characteristics, and utilizes thin film technology to provide stable characteristics over temperature and time. Typical applications include RF test equipment and loads in base stations. The thin film construction with wrap-around terminations insure long term operational stability.

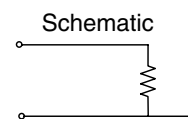
## Electrical Data

|                                    |                 |                              |            |
|------------------------------------|-----------------|------------------------------|------------|
| <b>Impedance</b>                   |                 | 50                           | 75         |
| <b>VSWR</b>                        |                 | 1.1                          | 1.2        |
| <b>Frequency Range</b>             |                 | DC to 3GHz                   | DC to 2GHz |
| <b>Power Rating (70°C)</b>         | <b>PCS1632S</b> | 125mW                        |            |
|                                    | <b>PCS3042S</b> | 250mW                        |            |
| <b>TCR</b>                         |                 | ±50ppm/°C                    |            |
| <b>Operating Temperature Range</b> |                 | -55°C to +125°C              |            |
| <b>Termination</b>                 |                 | 90/10 Sn/Pb<br>or<br>100% Sn |            |

## Physical Data



| Dimensions (mm) |            |            |
|-----------------|------------|------------|
|                 | PCS3042S   | PCS1632S   |
| <b>L</b>        | 4.20 ±0.20 | 3.20 ±0.20 |
| <b>t</b>        | 0.80 ±0.15 | 0.40 ±0.10 |
| <b>a</b>        | 0.80 ±0.20 | 1.00 ±0.25 |
| <b>W</b>        | 3.00 ±0.20 | 1.60 ±0.20 |



## Environmental Data

|                                     | Test Condition                 | To Meet     |
|-------------------------------------|--------------------------------|-------------|
| <b>Short Time Overload</b>          | 2.5 x rated voltage, 5 sec     | ±0.2% +0.05 |
| <b>Load Life</b>                    | 1000 Hours, 70°C               | ±0.2% +0.05 |
| <b>Moisture Resistance</b>          | 1000 Hours, 40°C 95% RH        | ±0.2% +0.05 |
| <b>Temperature Cycle</b>            | 5 Cycles 125°C High, -55°C Low | ±0.2% +0.05 |
| <b>Resistance to Soldering Heat</b> | 260°C, 10 sec.                 | ±0.2% +0.05 |
| <b>Insulation Resistance</b>        | 500V, 1 minute                 | >1,000M     |

## Ordering Data

Prefix ..... **HFR** - **PCS3042S** - **50R0**

Model .....

PCS1632S = 1206 chip terminator with 90/10 Sn/Pb terminations  
 PCS1632SLF = 1206 chip terminator with 100% Sn terminations  
 PCS3042S = 1612 chip terminator with 90/10 Sn/Pb terminations  
 PCS3042SLF = 1612 size chip terminator with 100%Sn Terminations

Impedance .....

50R0 = 50Ω; 75R0 = 75Ω

### General Note

IRC reserves the right to make changes in product specification without notice or liability. All information is subject to IRC's own data and is considered accurate at time of going to print.