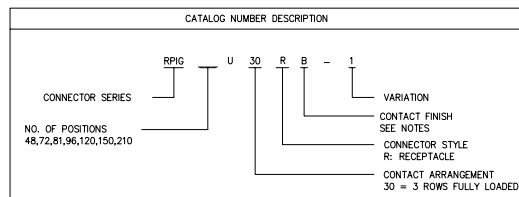


CATALOG NUMBER	NUMBER OF POSITIONS	A	B $\begin{smallmatrix} +.003 \\ -.005 \\ +0.08 \\ -.013 \end{smallmatrix}$	C	D $\begin{smallmatrix} \pm.005 \\ \pm0.13 \end{smallmatrix}$	E $\begin{smallmatrix} \pm.0045 \\ \pm0.114 \end{smallmatrix}$	G $\begin{smallmatrix} \pm.0051 \\ \pm0.130 \end{smallmatrix}$
RP1G48U30RB-1	48	1.900 48.26	2.073 52.65	1.500 38.10	1.742 44.25	1.9550 49.857	1.6940 43.028
RP1G72U30RB-1	72	2.300 58.58	2.473 62.77	2.300 58.42	2.542 64.57	2.7550 70.357	2.4940 63.348
RP1G81U30RB-1	81	3.000 76.20	3.173 80.58	2.800 71.12	2.842 72.19	3.0550 77.597	2.7940 70.988
RP1G96U30RB-1	96	3.500 88.90	3.673 93.29	3.100 78.74	3.342 84.87	3.5550 90.297	3.2940 83.668
RP1G120U30RB-1	120	4.300 109.22	4.473 113.61	3.900 99.08	4.142 105.21	4.3550 110.61	4.0940 103.988
RP1G150U30RB-1	150	5.300 134.82	5.473 139.01	4.900 124.46	5.142 130.61	5.3550 136.01	5.0940 128.988
RP1G210U30RB-1	210	7.300 185.42	7.473 189.81	6.900 175.26	7.142 181.41	7.3550 186.82	7.0940 180.19



NOTES: UNLESS OTHERWISE SPECIFIED;

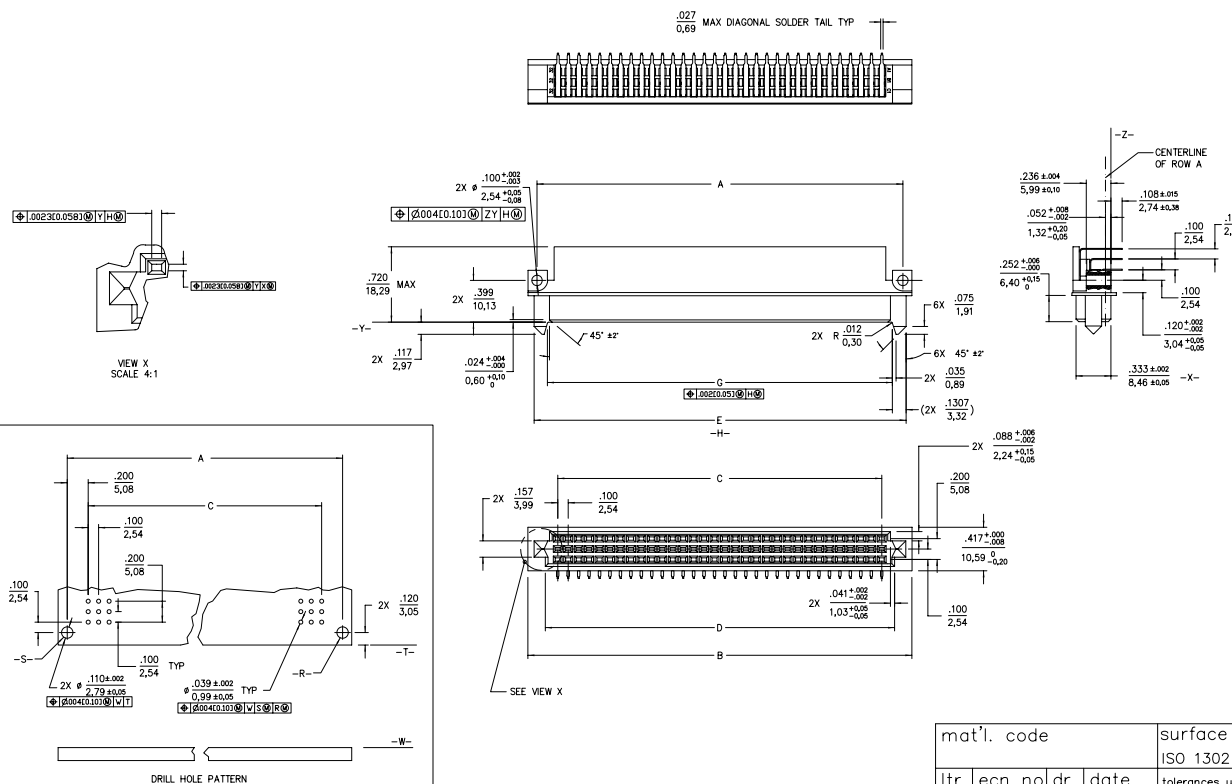
MATERIAL:

BODY: GLASS REINFORCED POLYESTER UL94-0, COLOR BLACK.

CONTACTS: COPPER ALLOY

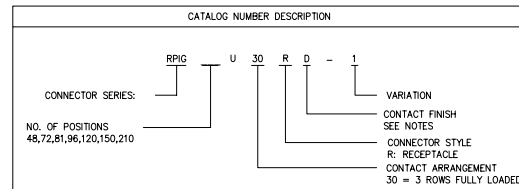
CONTACT FINISH:

B: 30 MICRONS (0.75 MICRONS) MIN GOLD IN CONTACT AREA AND 200 MICRONS (5.00 MICRONS) MIN TIN/LEAD ALLOY ON CONTACT TAILS. 50 MICRONS (1.30 MICRONS) MIN NICKEL UNDER PLATE ALL OVER.



mat'l. code				surface ISO 1302 ✓	tolerance ISO 406 ISO 1101	projection INCH/MM	product family DIN
ltr	ecn	no	dr	date	tolerances unless otherwise specified	scale 2:1	title
4	ECN1569	JW	11/28/90	angles	.XX±.01/.3		RIGHT ANGLE P.C.B. RECEPTACLE
5	DC11744	KAM	7/1/91	linear	.XXX±.005/.13		CONNECTOR WITH ALIGNMENT GUIDES
6	EC3086	DHR	9/26/94	0°±2'	.XXXX±.0020/.051		
7	EC3120	DHR	10/11/94	dr	BC	6/16/87	dwg no
8	ECN3176	DHR	01/10/95	engr	PJB	6/19/87	sheet 1 of 2 size
K	V20210	TAB	01/28/02	chr	RJG	7/22/87	SE93321 A3
L	M06-0330	AGS	8/25/06	appd	MSM	7/28/87	type Product Customer Drawing
sheet	revision	L	L				
index	sheet	1	2				

CATALOG NUMBER	NUMBER OF POSITIONS	A	B $\begin{smallmatrix} +.003 \\ -0.005 \\ \pm 0.009 \\ -0.13 \end{smallmatrix}$	C	D $\begin{smallmatrix} +.005 \\ -0.13 \end{smallmatrix}$	E $\begin{smallmatrix} +.0045 \\ -0.114 \end{smallmatrix}$	G $\begin{smallmatrix} +.0051 \\ -0.130 \end{smallmatrix}$
RPIC48U30RD-1	48	1.900 48.26	2.073 52.65	1.500 38.10	1.742 44.25	1.9550 49.657	1.6940 43.028
RPIC72U30RD-1	72	2.700 68.58	2.873 72.97	2.300 58.42	2.543 64.55	2.7950 70.977	2.4940 63.328
RPIC81U30RD-1	81	3.000 76.20	3.173 80.59	2.600 66.04	2.842 72.19	3.0550 77.597	2.7240 70.355
RPIC96U30RD-1	96	3.500 88.90	3.673 93.29	3.100 78.74	3.342 84.87	3.5550 90.297	3.2340 83.068
RPIC120U30RD-1	120	4.300 109.22	4.473 113.61	3.900 99.06	4.142 105.21	4.3550 110.617	4.0340 103.388
RPIC150U30RD-1	150	5.300 134.92	5.473 139.01	4.900 124.46	5.142 130.61	5.3550 136.917	5.0340 128.388
RPIC210U30RD-1	210	7.300 185.42	7.473 189.81	6.900 175.26	7.142 181.41	7.3550 186.82	7.0340 180.19



NOTES: UNLESS OTHERWISE SPECIFIED:

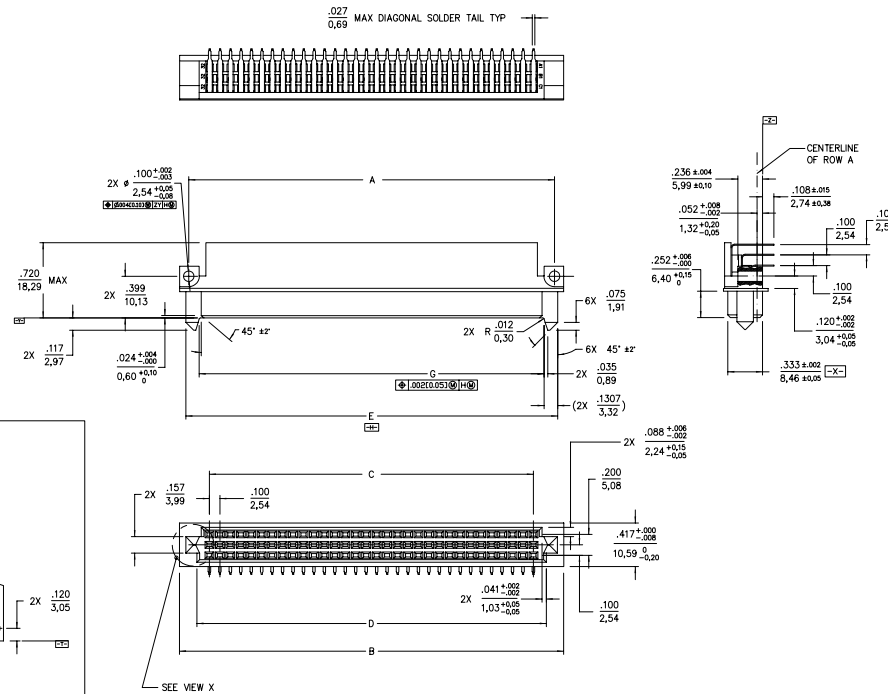
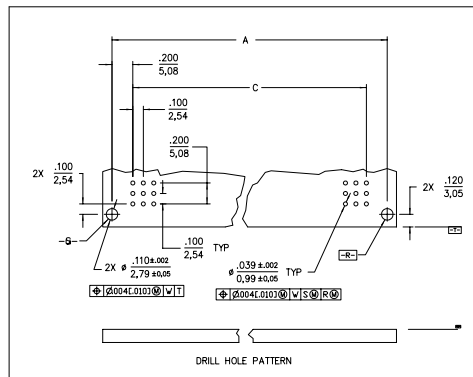
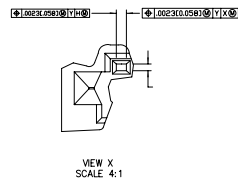
MATERIAL:

BODY: GLASS REINFORCED POLYESTER UL94-0, COLOR BLACK.

CONTACTS: COPPER ALLOY

CONTACT FINISH:

D: 5 MICRONS (.13 MICRONS) MIN GOLD OVER 30 MICRONS (0.76 MICRONS) MIN PALLADIUM NICKEL IN CONTACT AREA AND 100 MICRONS (2.54 MICRONS) MIN TIN/LEAD ALLOY ON CONTACT TAILS. 50 MICRONS (1.27 MICRONS) MIN NICKEL UNDER PLATE ALL OVER.



REFERENCE:  
SE93322

mat'l. code	surface ISO 1302 ✓	tolerance ISO 406 ISO 1101	projection INCH/MM	product family DIN
ltr	ecn	no	dr	date
L				
	angles	linear	.XX±.01/.3	tolerances unless otherwise specified
	0°±2'		.XXX±.005/.13	
	dr	BC	6/16/87	
	engr	PJB	6/19/87	
	chr	RJG	7/22/87	
	appd	MSM	7/28/87	
sheet index	revision sheet			

