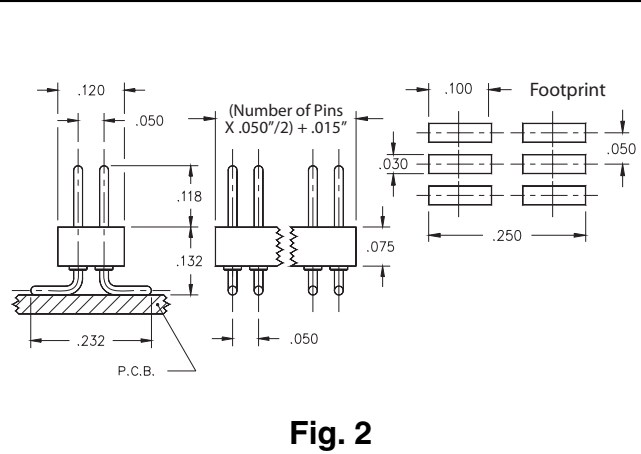
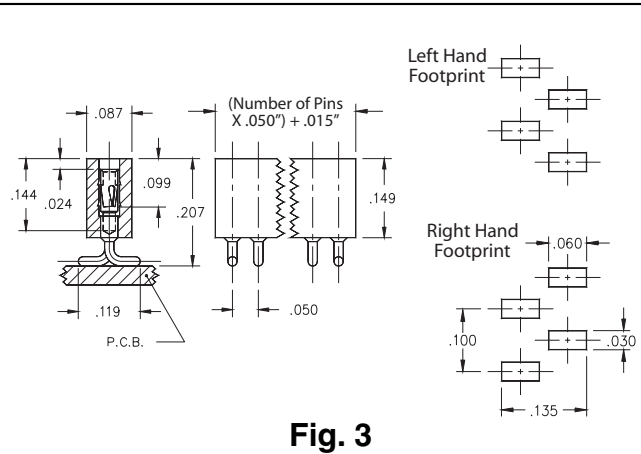


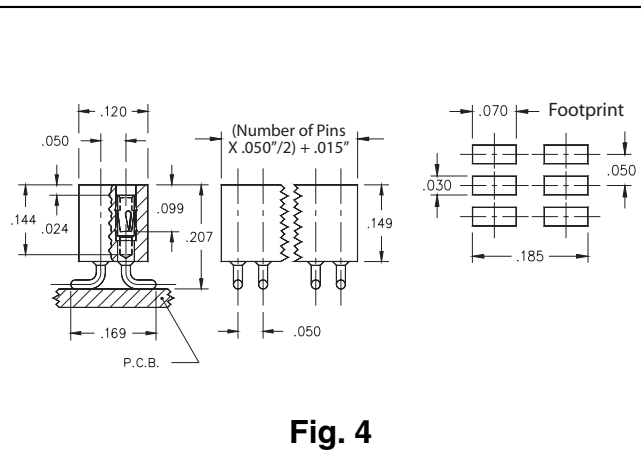
**Fig. 1**



**Fig. 2**

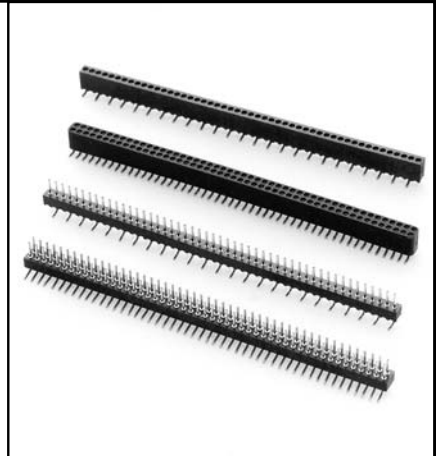


**Fig. 3**



**Fig. 4**

- Series 850 and 851 interconnects are available in single and double row form.
- Single row interconnects having an even number of pins are now available with a left or right hand footprint.
- Headers (850 & 852) use MM# 4006 pins. (See page 166 for details)
- Sockets (851 & 853) use MM# 0489 receptacles and accept pin diameters from .015-.021. (See page 129 for details)
- Insulators are high temp. thermoplastic.



**Ordering Information**

|                          |   |             |             |
|--------------------------|---|-------------|-------------|
| <b>Fig. 1L</b>           | <b>Single Row Header, Left Hand Footprint<br/>Odd or Even # of pins</b> |             |             |
|                          | 850-XX-0__-30-001<br>Specify # of pins → 01-50                          |             |             |
| <b>Fig. 1R</b>           | <b>Single Row Header, Right Hand Footprint<br/>Even # of pins</b>       |             |             |
|                          | 850-XX-0__-30-002<br>Specify even # of pins → 02-50                     |             |             |
| <b>Fig. 2</b>            | <b>Double Row Header, Even # of pins</b>                                |             |             |
|                          | 852-XX-__-30-001<br>Specify even # of pins → 002-100                    |             |             |
| SPECIFY PLATING CODE XX= |   | <b>10</b>   | <b>90</b>   |
| Pin Plating              |   | 10μ" Au     | 200μ" Sn/Pb |
| <b>Fig. 3L</b>           | <b>Single Row Socket, Left Hand Footprint<br/>Odd or Even # of pins</b> |             |             |
|                          | 851-XX-0__-30-001<br>Specify # of pins → 01-50                          |             |             |
| <b>Fig. 3R</b>           | <b>Single Row Socket, Right Hand Footprint<br/>Even # of pins</b>       |             |             |
|                          | 851-XX-0__-30-002<br>Specify even # of pins → 02-50                     |             |             |
| <b>Fig. 4</b>            | <b>Double Row Socket, Even # of pins</b>                                |             |             |
|                          | 853-XX-__-30-001<br>Specify even # of pins → 002-100                    |             |             |
| SPECIFY PLATING CODE XX= |   | <b>93</b>   | <b>99</b>   |
| Sleeve (Pin)             |   | 200μ" Sn/Pb | 200μ" Sn/Pb |
| Contact (Clip)           |   | 30μ" Au     | 200μ" Sn/Pb |