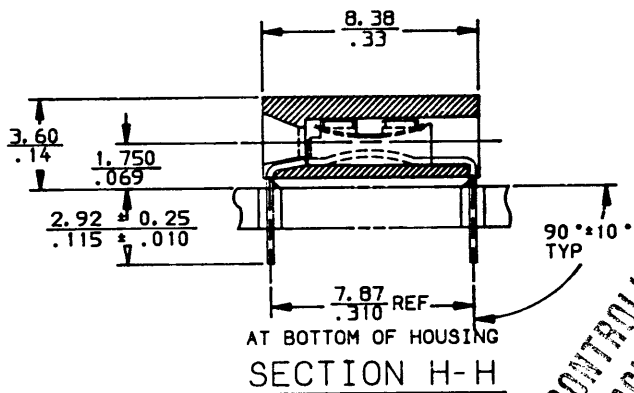
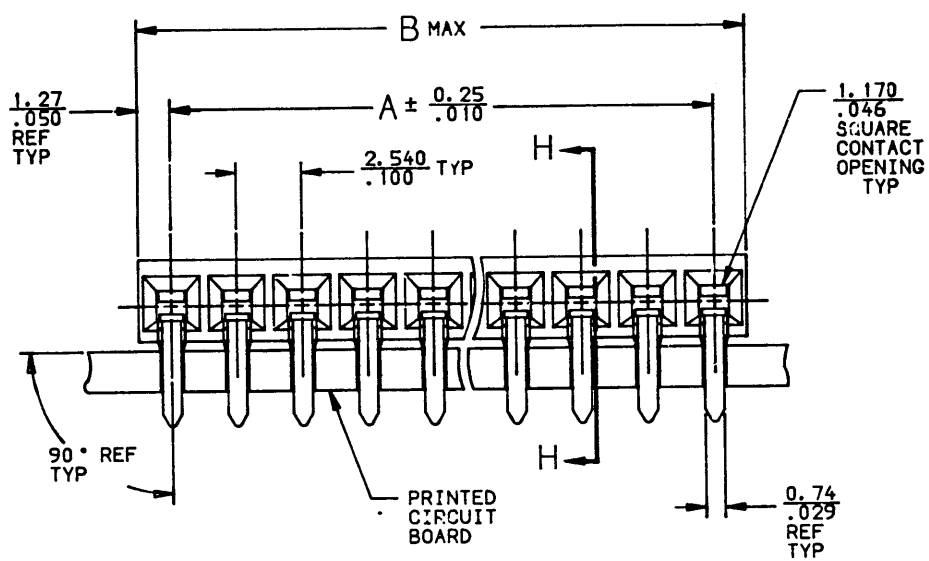
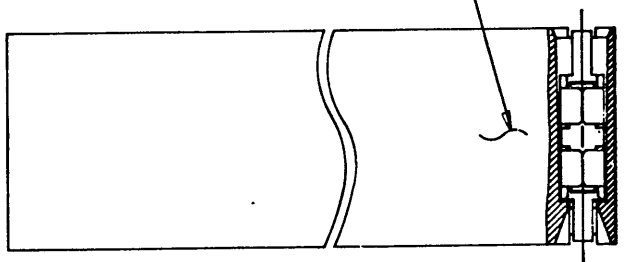


PRODUCT NO.

SEE TABLE

REVISIONS			
REV	DESCRIPTION	BY	DATE
A	APPROVED	HAA	12/81
B	REDRAWN TO STANDARDS COLOR BLACK WAS BLUE	HAA	6/82

SEE NOTE ③



CONTROLLED DOCUMENT

CAD

DO NOT SCALE DRAWING		TOLERANCE UNLESS OTHERWISE NOTED		MATERIAL	
LINEAR		MM / INCH		SEE NOTES	
0.00 ± 0.25 / .00 ± .01		0.00 ± 0.13 / .00 ± .005		FINISH	
0.000 ± 0.01 / .000 ± .0020		ANGLES		~	
± 5°					

CUSTOMER COPY FOR REFERENCE ONLY

DR	H ABBOTT	12/1/81
CRD	B HILEGAS	12/3/81
ENGR	D NEIDICH	12/3/81
APPD	D NEIDICH	10/23/81

BERG ELECTRONICS		NEW CUMBERLAND, PA.	
TITLE		1X. 100 CARD CONNECTOR	
SCALE	SIZE	DWG NO	SHEET
8:1	C	67228	1 OF 4

NOTE: This print is the property of and embodies proprietary designs of Berg Electronics, Division of E.I. du Pont de Nemours & Co., Inc.

No part of this design shown on this print may be used in any way without the written consent of Berg Electronics, New Cumberland, Pa.




PRODUCT NO. PRODUCT NUMBER	NO. OF POS.	A ± $\frac{0.51}{0.020}$	B MAX
67226-041	1X41	101.6/4.000	104.14/4.100
-042	1X42	104.14/4.100	106.68/4.200
-043	1X43	106.68/4.200	109.22/4.300
-044	1X44	109.22/4.300	111.76/4.400
-045	1X45	111.76/4.400	114.3/4.500
-046	1X46	114.3/4.500	116.84/4.600
-047	1X47	116.84/4.600	119.38/4.700
-048	1X48	119.38/4.700	121.92/4.800
-049	1X49	121.92/4.800	124.46/4.900
-050	1X50	124.46/4.900	127/5.000
-051	1X51	127/5.000	129.54/5.100
-052	1X52	129.54/5.100	132.08/5.200
-053	1X53	132.08/5.200	134.62/5.300
-054	1X54	134.62/5.300	137.16/5.400
-055	1X55	137.16/5.400	139.7/5.500
-056	1X56	139.7/5.500	142.24/5.600
-057	1X57	142.24/5.600	144.78/5.700
-058	1X58	144.78/5.700	147.32/5.800
-059	1X59	147.32/5.800	149.86/5.900
-060	1X60	149.86/5.900	152.4/6.000
-061	1X61	152.4/6.000	154.94/6.100
-062	1X62	154.94/6.100	157.48/6.200
-063	1X63	157.48/6.200	160.02/6.300
-064	1X64	160.02/6.300	162.56/6.400
67226-065	1X65	162.56/6.400	165.1/6.500

REVISIONS			
REV	DESCRIPTION	BY	DATE
5			

CONTROLLED  
DOCUMENT

CAD

		DO NOT SCALE DRAWING		TOLERANCE UNLESS OTHERWISE NOTED		MATERIAL		CUSTOMER COPY FOR REFERENCE ONLY		 NEW CUMBERLAND, PA	
		→		LINEAR		0.00 ± 0.25 00 ± 01		DR H ABBOTT 2/1/81		TITLE 1X. 100	
		THIRD ANGLE PROJECTION		0.000 ± 0.13 000 ± 008		0.0000 ± 0.001 0000 ± 0020		CAR B HILEGAS 2/3/81		CARD CONNECTOR	
NEXT ASSEMBLY		USED ON		ANGLES ± 5°		FINISH		ENGR D NEIDICH 2/3/81		SCALE 1:1	
APPLICATION		MM INCH				~		APPR D NEIDICH 10/23/81		DWG. NO 67228	
										SHEET 3 OF 4	

NOTE: This print is the property of and embodies proprietary designs of Berg Electronics, Division of E.I. du Pont de Nemours & Co., Inc. No part of this drawing should be used in any way without the written consent of Berg Electronics, New Cumberland, Pa.

REVISIONS			
REV	DESCRIPTION	BY	DATE
1			

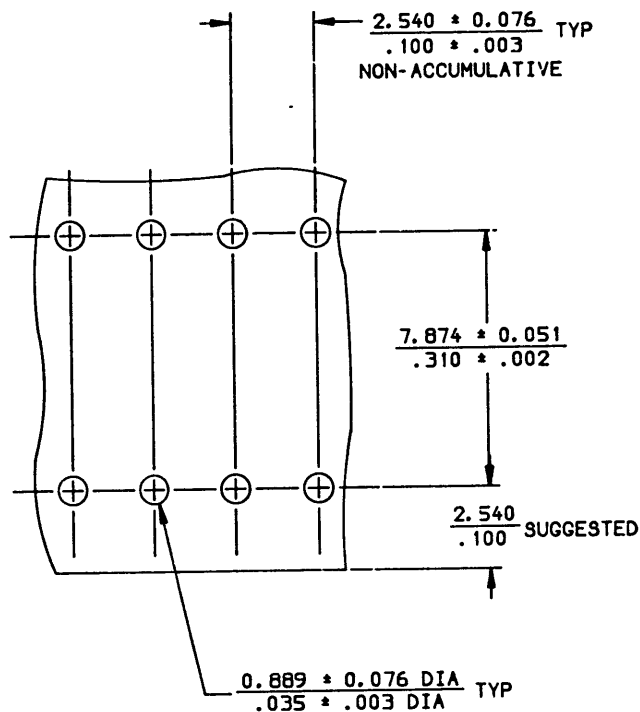


FIGURE A

## NOTES

- HOUSING MATERIAL:  
30% GLASS-FILLED THERMOPLASTIC POLYESTER  
PER UL 94V-0  
COLOR: BLACK
- TERMINAL MATERIAL:  
BODY: 1/2 HARD BRASS, ALLOY C26000  
0.25/.010 THICK  
SPRING: BE-CU, ALLOY C17200  
HEAT TREATED  
BODY PLATING:  
0.76 MICRON/30 MICROINCH GOLD  
OVER 1.27 MICRON/50 MICROINCH NICKEL  
IN CONTACT AREA  
SPRING PLATING: GOLD FLASH
- MARK "BERG", BERG PART NUMBER,  
AND DATE CODE WITH 1.52/.060  
HIGH WHITE LETTERS
- APPLICATION INFORMATION:  
A. RECOMMENDED MOUNTING HOLE  
PATTERN IS SHOWN IN FIGURE "A"  
B. ALL MATING PINS TO BE  
0.64/.025 SQUARE ON TRUE  
CENTER OF GIVEN TERMINAL  
SPACINGS WITHIN 0.38/.015 DIA.  
C. SUGGESTED MATING PIN LENGTH  
8.89 ± 0.51/.350 ± .020

CONTROLLED  
DOCUMENT

CAD

DO NOT SCALE DRAWING				TOLERANCE UNLESS OTHERWISE NOTED				CUSTOMER COPY FOR REFERENCE ONLY				BERG ELECTRONICS			
NEXT ASSY	USED ON	THIRD ANGLE PROJECTION	MM	INCH	LINEAR	ANGLES	± 5°	MATL	OR	DATE	TITLE	SCALE	SIZE	DWG NO	SHEET
					0.00 ± 0.25 00 ± 01			SEE NOTES	H ABBOTT	12/1/81	1X. 100	8*1	C	67228	4
					0.000 ± 0.13 000 ± 005						CARD				
					0.0000 ± 0.051 0000 ± 0020						8 HILEGAS				
											12/3/81				
											D NEIDICH				
											12/3/81				
											D NEIDICH				
											10/23/81				

NOTE: This print is the property of and embodies proprietary designs of Berg Electronics, Division of E. I. du Pont de Nemours & Co., Inc.

No part of the design shown on this print may be used in any way without the written consent of Berg Electronics, New Cumberland, Pa.