

REFERENCE SPECIFICATIONS

- MIL-DTL-24308
- IEC-60352-5
- IEC-60512 (TESTS PROCEDURE)

PHYSICAL CHARACTERISTICS

- INSULATOR MATERIAL: THERMOPLASTIC COLOR BLACK
- CONTACT MATERIAL: COPPER ALLOY
- ACCESSORIES : BRASS
- SHELL : STEEL

ELECTRICAL CHARACTERISTICS

- NOMINAL CURRENT: 2.5A
- CONTACT RESISTANCE : $<10m\Omega$
- VOLTAGE PROOF : >750 V.r.m.s.
- RATED VOLTAGE : 300 V.r.m.s.
- INSULATION RESISTANCE: $>5000M\Omega$
- CREEPAGE AND CLEARANCE DISTANCE: $>1mm$

MECHANICAL CHARACTERISTICS

- RETENTION AGAINST TORQUE:
 - Threaded insert: 0.7 N.m minimum
 - Female screw lock: 0.5 N.m minimum
 - Insert L: threaded M3
 - Insert X: threaded UNC 4.40
- INSERTION AND WITH DRAWAL FORCE: $<n \times 3.40$ N (n number of cts)
- GAUGE RETENTION FORCE : >0.14 N
- with gauge $\varnothing 0.99 \pm 0.005$ / SURFACE ROUGHNESS:
 - $Ra=0.10\mu$ mini- 0.25μ maxi
- VIBRATIONS: 10-500Hz / 1.5 mm - 10g / 3 HRS/axis according with MIL std 1344 meth.2005 cond 2 interruption $<1\mu s$

ENVIRONMENTAL CHARACTERISTICS

- CLIMATIC CATEGORY: 55 / 125 / 56
 - TEMPERATURE RANGE -55° C to +125° C
 - DAMP HEAT STEADY STATE 56 DAYS
 - SALT SPRAY : 48 Hours

NOTE RoHS INFORMATIONS

- The "LF" products meet European union Directives and other country regulations as described in GS-22-008
- Contacts
 - Gold over nickel on mating area
 - : 1.27μ Nickel mini, 0.5 to 1.5μ pure matte tin on termination
- Shell plating: Nickel or Pure Tin
- Accessories with harpoon: bright pure tin over Nickel
- Other accessories: bright Nickel
- Packaging spec: see GS-14-920

PLATING FOR TIN LEAD VERSIONS

- Contacts : gold over Nickel on mating area tin lead over Nickel on termination
- Shells bright Nickel or Bright Pure Tin
- Accessories with harpoon: bright pure tin over Nickel
- Other accessories: Nickel

CD62S9xC6--00LF

Series

Nb of contacts

Contact definition:

S : socket

Foot print 6.00

PCB Hole $\varnothing 0.80mm$

Press-fit termination

(stamped contact)

Plating definition :

- 4 Standard class > 200 mating/unmating
- 6 High performance class > 500 mating/unmating

Front accessories definition :

(see sheet 2)

GL : Harpoons + insert M3

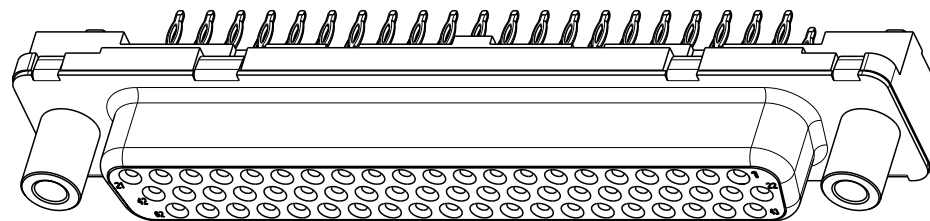
GX : Harpoons + insert UNC 4-40

GV : Harpoons + female screw UNC 4-40

Standard version

RoHS compatible

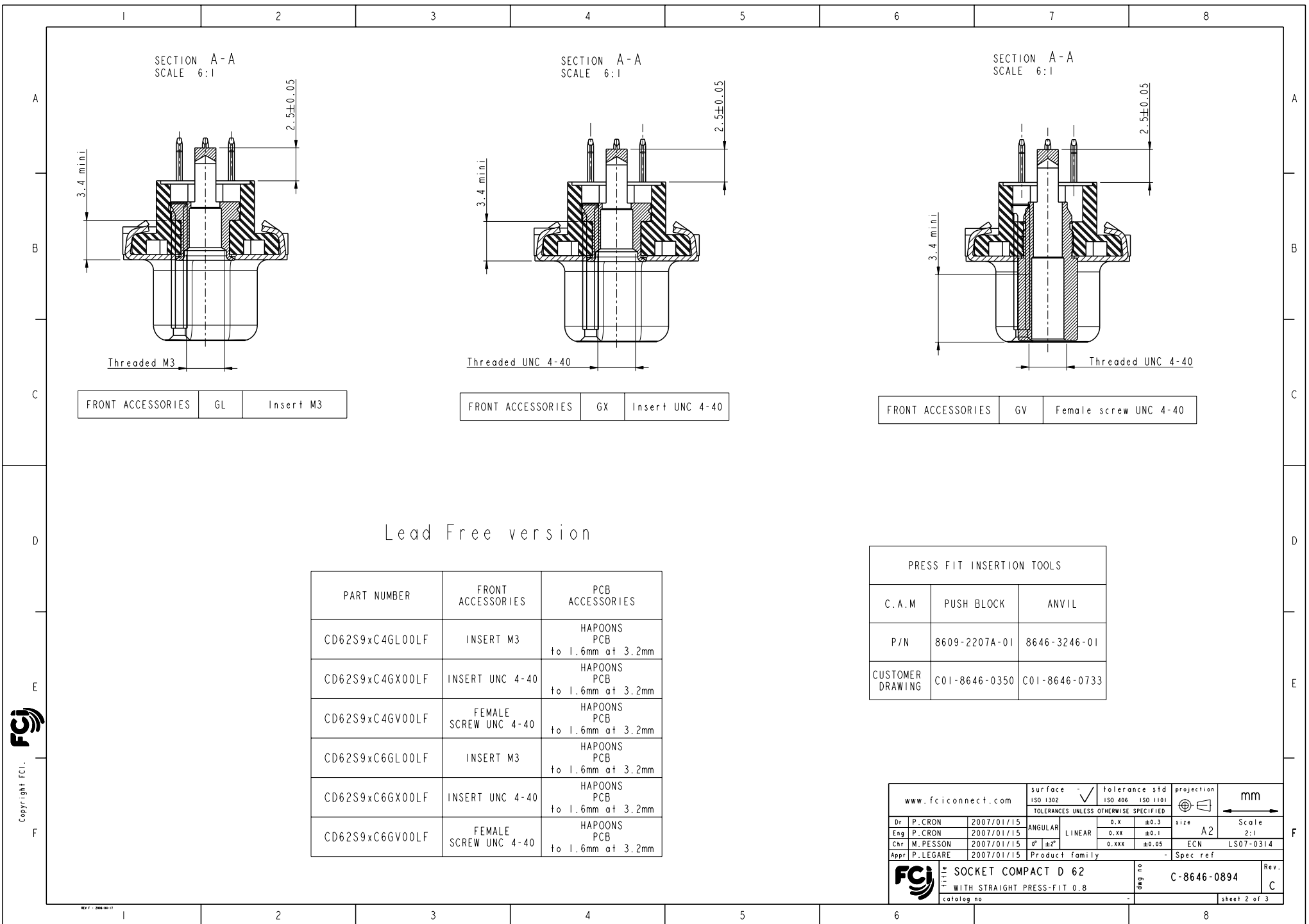
(see note RoHS)



www.fciconnect.com				surface	tolerance std	projection	mm	
				ISO 1302	ISO 406	ISO 1101		
				TOLERANCES UNLESS OTHERWISE SPECIFIED			size	Scale
Dr	P. CRON	2007/01/15	ANGULAR	0.X	± 0.3		A2	2:1
Eng	P. CRON	2007/01/15	LINEAR	0.XX	± 0.1			
Chr	M. PESSON	2007/01/15	$0^\circ \pm 2^\circ$	0.XXX	± 0.05		ECN	LS07-0314
Appr	P. LEGARE	2007/01/15	Product family				Spec ref	
							deg no	Rev.
							C-8646-0894	C
							catalog no	sheet 1 of 3



Copyright FCI.



METALLIZED HOLE DIMENSION		HOLE PRESS-FIT PURE TIN BOARD FINISH ØA (signal contact)	HOLE PRESS-FIT COPPER OSP BOARD FINISH ØB (harpoon)	HOLE PRESS-FIT PURE TIN BOARD FINISH ØA (signal contact)	HOLE PRESS-FIT COPPER OSP BOARD FINISH ØB (harpoon)
P.C.B. HOLE DEFINITION (NOTE 1 et 2)	DRILL DIAMETER	Ø0.9 REF (NOTE-3)	Ø3.22 REF (NOTE-3)	Ø0.9 REF (NOTE-3)	Ø3.22 REF (NOTE-3)
	DRILLED HOLE	Ø0.875 - Ø0.925	Ø3.19 - Ø3.25	Ø0.875 - Ø0.925	Ø3.19 - Ø3.25
	COPPER PLATING	25µ mini - 50µ maxi	25µ mini - 50µ maxi	25µ mini - 50µ maxi	25µ mini - 50µ maxi
	TIN PLATING	0.8µ mini - 1.2µ maxi	0.8µ mini - 1.2µ maxi		
	OSP PLATING (cooper)			0.2µ mini - 0.5µ maxi	0.2µ mini - 0.5µ maxi
FINISH HOLE (after reflow)		Ø0.76 - Ø0.89	Ø3.08 - Ø3.20	Ø0.77 - Ø0.89	Ø3.09 - Ø3.20

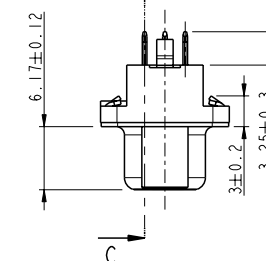
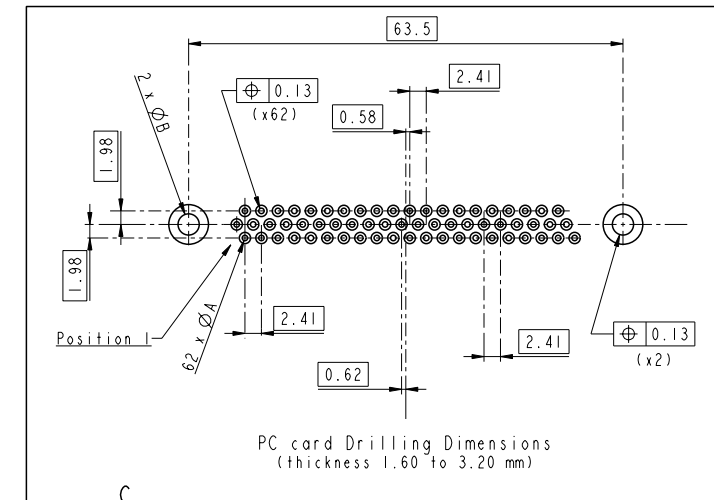
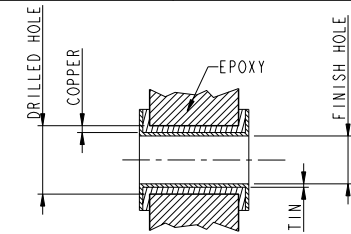
NOTE-1: THESE DIMENSIONS MUST BE RESPECT TO SECURE PRESS-FIT PIN PERFORMANCES.

NOTE-2: ACCORDING TO IEC -352-5 SPEC.

NOTE-3: MAJOR REQUIEREMENT FOR PRESS-FIT PIN PERFORMANCE

PRESS-FIT PERFORMANCE

	PRESS-FIT CONTACTS	PRESS-FIT HARPOONS
INSERTION FORCE	< 65N	< 120N
EXTRACTION FORCE	> 20N	> 30N



Dimension with oval around are critical dimensions including any attached geometrical tolerance. Other features or stand-alone geometrical tolerances being critical have a note "CRITICAL FEATURE" below the item.
A symbol Δ (x: drawing current revision) will be next to any dimension, view or note which has been modified with the current drawing revision.

www.fciconnect.com		surface	ISO 1302	tolerance	std	projection	mm
		TOLERANCES UNLESS OTHERWISE SPECIFIED		ISO 406	ISO 1101		
Dr	P. CRON	2007/01/15	ANGULAR	0.X	±0.3	size	Scale
Eng	P. CRON	2007/01/15	LINEAR	0.XX	±0.1	A2	2:1
Chr	M. PESSON	2007/01/15	0° ±2°	0.XXX	±0.05	ECN	LS07-0314
Appr	P. LEGARE	2007/01/15	Product family			Spec. ref	
FCI		Title		deg no		Rev.	
		SOCKET COMPACT D 62		C-8646-0894		C	
		WITH STRAIGHT PRESS-FIT 0.8					
		catalog no				sheet 3 of 3	

