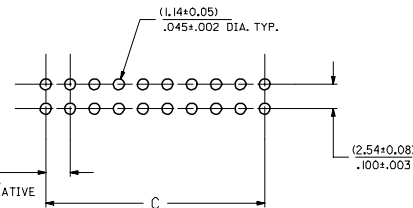
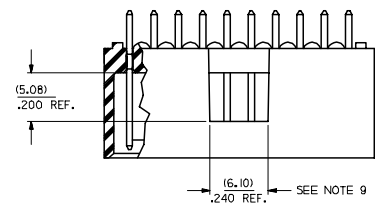
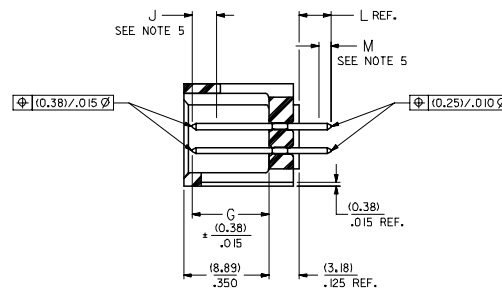
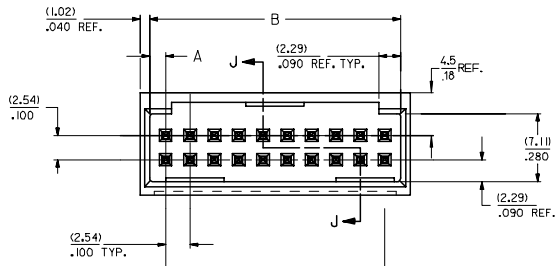


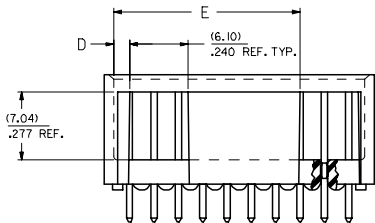
# OPTION "A"



RECOMMENDED P.C. BOARD HOLE LAYOUT

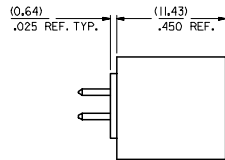


SECTION J-J



NOTES:

- MATERIAL: SHROUDED WAFER: GLASS FILLED, LIQUID CRYSTAL POLYMER, COLOR: BLACK, 94V-0, PINS, PHOSPHOR BRONZE ALLOY.
- PLATING:
  - TIN 0.00381/0.00150 MINIMUM TIN, OVER 0.00127/0.00050 MINIMUM NICKEL.
  - 15 GOLD 0.00038/0.00015 MINIMUM GOLD PLATE IN SELECTED AREA, 0.00191/0.00075 MINIMUM TIN IN SELECTED AREA, OVER 0.00127/0.00050 MINIMUM NICKEL OVER-ALL.
  - 30 GOLD 0.00076/0.00030 MINIMUM GOLD PLATE IN SELECTED AREA, 0.00191/0.00075 MINIMUM TIN IN SELECTED AREA, OVER 0.00127/0.00050 MINIMUM NICKEL OVER-ALL.
- \*THE PRIMARY SHIPPING CARTON WILL BE LABELED "COMPLIANT TO RoHS DIRECTIVE 2002/95/EC AND ELV ANNEX II OF DIRECTIVE 2000/53/EC". CARTONS WITHOUT THIS LABEL MAY CONTAIN PRODUCT WITH LEAD.
- PRODUCT SPECIFICATION: PS-70567.
- PACKAGING: SEE CHARTS.
- MEASURE POINT FOR PLATING THICKNESS.
- PN PUSH-OUT FORCE: 4 LBS. MINIMUM.
- FOR ILLUSTRATION PURPOSES, 20 (DUAL 10) CIRCUIT SIZE HEADER SHOWN.
- PN SOLDERABILITY PER MOLEX SPEC. SMES-152.
- WINDOW NOT AVAILABLE ON 6 OR 8 CIRCUIT SIZE.

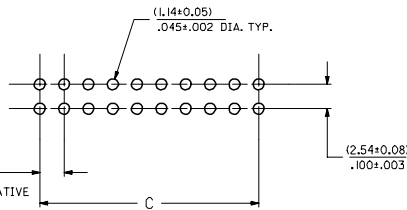
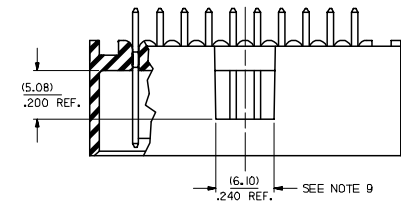


CKT.	DIM. 'A'	DIM. 'B'	DIM. 'C'	DIM. 'D'	DIM. 'E'
06	(1.68) .066	(8.43) .332	(5.08) .200	(1.68) .066	
08	(1.68) .066	(10.97) .432	(7.62) .300	(1.68) .066	
10	(1.68) .066	(13.51) .532	(10.16) .400	(4.22) .166	
12	(1.68) .066	(16.05) .632	(12.70) .500	(4.22) .166	
14	(1.68) .066	(18.59) .732	(15.24) .600	(6.76) .266	
16	(1.68) .066	(21.13) .832	(17.78) .700	(6.76) .266	
18	(1.68) .066	(23.67) .932	(20.32) .800	(9.30) .366	
20	(1.68) .066	(26.21) 1.032	(22.86) .900	(1.68) .066	(19.46) .766
22	(1.68) .066	(28.75) 1.132	(25.40) 1.000	(1.68) .066	(22.00) .866
24	(1.68) .066	(31.29) 1.232	(27.94) 1.100	(1.68) .066	(24.54) .966
26	(1.68) .066	(33.83) 1.332	(30.48) 1.200	(1.68) .066	(27.08) 1.066
28	(1.68) .066	(36.37) 1.432	(33.02) 1.300	(1.68) .066	(29.62) 1.166
30	(1.68) .066	(38.91) 1.532	(35.56) 1.400	(1.68) .066	(32.16) 1.266
32	(1.68) .066	(41.45) 1.632	(38.10) 1.500	(1.68) .066	(34.70) 1.366
34	(1.68) .066	(43.99) 1.732	(40.64) 1.600	(1.68) .066	(37.24) 1.466
36	(1.68) .066	(46.53) 1.832	(43.18) 1.700	(1.68) .066	(39.78) 1.566
38	(1.68) .066	(49.07) 1.932	(45.72) 1.800	(1.68) .066	(42.32) 1.666
40	(1.68) .066	(51.61) 2.032	(48.26) 1.900	(1.68) .066	(44.86) 1.766
42	(1.68) .066	(54.15) 2.132	(50.80) 2.000	(1.68) .066	(47.40) 1.866
44	(1.68) .066	(56.69) 2.232	(53.34) 2.100	(1.68) .066	(49.94) 1.966
46	(1.68) .066	(59.23) 2.332	(55.88) 2.200	(1.68) .066	(52.48) 2.066
48	(1.68) .066	(61.77) 2.432	(58.42) 2.300	(1.68) .066	(55.02) 2.166
50	(1.68) .066	(64.31) 2.532	(60.96) 2.400	(1.68) .066	(57.56) 2.266
52	(1.68) .066	(66.85) 2.632	(63.50) 2.500	(1.68) .066	(60.10) 2.366
54	(1.68) .066	(69.39) 2.732	(66.04) 2.600	(1.68) .066	(62.64) 2.466
56	(1.68) .066	(71.93) 2.832	(68.58) 2.700	(1.68) .066	(65.18) 2.566
58	(1.68) .066	(74.47) 2.932	(71.12) 2.800	(1.68) .066	(67.72) 2.666
60	(1.68) .066	(77.01) 3.032	(73.66) 2.900	(1.68) .066	(70.26) 2.766
62	(1.68) .066	(79.55) 3.132	(76.20) 3.000	(1.68) .066	(72.80) 2.866
64	(1.68) .066	(82.09) 3.232	(78.74) 3.100	(1.68) .066	(75.34) 2.966
66	(1.68) .066	(84.63) 3.332	(81.28) 3.200	(1.68) .066	(77.88) 3.066
68	(1.68) .066	(87.17) 3.432	(83.82) 3.300	(1.68) .066	(80.42) 3.166
70	(1.68) .066	(89.71) 3.532	(86.36) 3.400	(1.68) .066	(82.96) 3.266
72	(1.68) .066	(92.25) 3.632	(88.90) 3.500	(1.68) .066	(85.50) 3.366

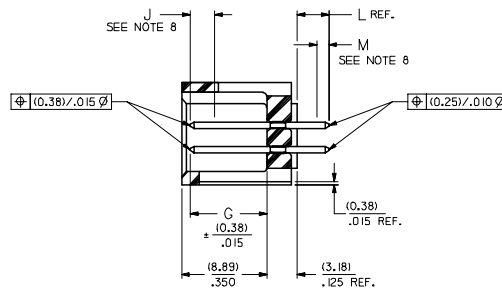
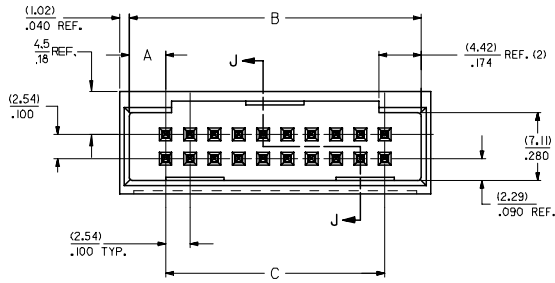
7	F1	6	F1	5	F1	4	F1	3	F1	2	F1	1	F1
72	(1.68) .066	(92.25) 3.632	(88.90) 3.500	(1.68) .066	(85.50) 3.366								
70	(1.68) .066	(89.71) 3.532	(86.36) 3.400	(1.68) .066	(82.96) 3.266								
68	(1.68) .066	(87.17) 3.432	(83.82) 3.300	(1.68) .066	(80.42) 3.166								
66	(1.68) .066	(84.63) 3.332	(81.28) 3.200	(1.68) .066	(77.88) 3.066								
64	(1.68) .066	(82.09) 3.232	(78.74) 3.100	(1.68) .066	(75.34) 2.966								
62	(1.68) .066	(79.55) 3.132	(76.20) 3.000	(1.68) .066	(72.80) 2.866								

ADD REF. DIMENSION EC NO. UCP2007-0751 DRAWN BY 2006/09/28 CHECKED BY 2006/10/03 APPROVED BY 2006/10/19	QUALITY SYMBOLS 0 0	GENERAL TOLERANCES (UNLESS SPECIFIED)		DIMENSION STYLE	SCALE	DESIGN UNITS	THIRD ANGLE PROJECTION 4 SIDES SHROUDED WAFER HIGH TEMP., (2.54)/.100 GRID W/ (0.64)/.025 PINS MOLEX INCORPORATED SDA-70567-**** SHEET NO. 1 OF 7	
		mm	INCH	MM/IN	4:1	INCH		
		DRAWN BY DATE		CHECKED BY DATE		APPROVED BY DATE		
		DRAWN BY DATE		CHECKED BY DATE		APPROVED BY DATE		
DRAFT WHERE APPLICABLE MUST REMAIN WITHIN DIMENSIONS		SEE CHART		MATERIAL NO. DOCUMENT NO.				
THIS DRAWING CONTAINS INFORMATION THAT IS PROPRIETARY TO MOLEX INCORPORATED AND SHOULD NOT BE USED WITHOUT WRITTEN PERMISSION								

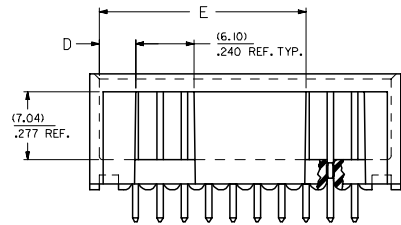
# OPTION "B"



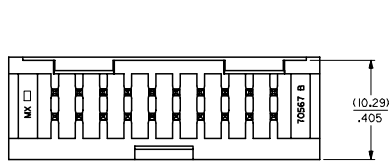
RECOMMENDED P.C. BOARD HOLE LAYOUT



SECTION J-J



- NOTES:
- MATERIAL: SHROUDED WAFER 30% G.F. LCP, COLOR: BLACK, 94V-0. PINS: PHOSPHOR BRONZE ALLOY 510.
  - PLATING:
    - TIN - (0.00381)/0.000150 MINIMUM TIN OVER (0.001271)/0.000050 MINIMUM NICKEL.
    - 15 GOLD - (0.000381)/0.000015 MINIMUM GOLD PLATE IN SELECTED AREA, (0.001911)/0.000075 MINIMUM TIN IN SELECTED AREA, OVER (0.001271)/0.000050 MINIMUM NICKEL OVER-ALL.
    - 30 GOLD - (0.000761)/0.000030 MINIMUM GOLD PLATE IN SELECTED AREA, (0.001911)/0.000075 MINIMUM TIN IN SELECTED AREA, OVER (0.001271)/0.000050 MINIMUM NICKEL OVER-ALL.
  - \*THE PRIMARY SHIPPING CARTON WILL BE LABELED "COMPLIANT TO ROHS DIRECTIVE 2002/95/EC AND ELV ANNEX II OF DIRECTIVE 2000/53/EC"; CARTONS WITHOUT THIS LABEL MAY CONTAIN PRODUCT WITH LEAD.
  - PRODUCT SPECIFICATION: PS-70567.
  - PACKAGING: SEE CHARTS
  - PIN PUSHOUT FORCE: 4 LBS. MN.
  - FOR ILLUSTRATION PURPOSES, 20 (DUAL 10) CIRCUIT SIZE HEADER SHOWN.
  - PIN SOLDERABILITY PER MOLEX SPEC. SMES-52.
  - MEASURE POINT FOR PLATING THICKNESS.
  - WINDOW IS NOT AVAILABLE ON 6 CIRCUIT.



CKT.	DIM. 'A'	DIM. 'B'	DIM. 'C'	DIM. 'D'	DIM. 'E'		
06	(3.81) .150	(8.43) .500	(5.08) .200	(3.81) .150			
08	(3.81) .150	(15.24) .600	(7.62) .300	(3.81) .150			
10	(3.81) .150	(17.78) .700	(10.16) .400	(6.35) .250			
12	(3.81) .150	(20.32) .800	(12.70) .500	(6.35) .250			
14	(3.81) .150	(22.86) .900	(15.24) .600	(6.89) .350			
16	(3.81) .150	(25.40) 1.000	(17.78) .700	(6.89) .350			
18	(3.81) .150	(27.94) 1.100	(20.32) .800	(11.43) .450			
20	(3.81) .150	(30.48) 1.200	(22.86) .900	(3.81) .150	(21.59) .850		
22	(3.81) .150	(33.02) 1.300	(25.40) 1.000	(3.81) .150	(24.13) .950		
24	(3.81) .150	(35.56) 1.400	(27.94) 1.100	(3.81) .150	(26.67) 1.050		
26	(3.81) .150	(38.10) 1.500	(30.48) 1.200	(3.81) .150	(29.21) 1.150		
28	(3.81) .150	(40.64) 1.600	(33.02) 1.300	(3.81) .150	(31.75) 1.250		
30	(3.81) .150	(43.18) 1.700	(35.56) 1.400	(3.81) .150	(34.29) 1.350		
32	(3.81) .150	(45.72) 1.800	(38.10) 1.500	(3.81) .150	(36.83) 1.450		
34	(3.81) .150	(48.26) 1.900	(40.64) 1.600	(3.81) .150	(39.37) 1.550		
36	(3.81) .150	(50.80) 2.000	(43.18) 1.700	(3.81) .150	(41.91) 1.650		
38	(3.81) .150	(53.34) 2.100	(45.72) 1.800	(3.81) .150	(44.45) 1.750		
40	(3.81) .150	(55.88) 2.200	(48.26) 1.900	(3.81) .150	(46.99) 1.850		
42	(3.81) .150	(58.42) 2.300	(50.80) 2.000	(3.81) .150	(49.53) 1.950		
44	(3.81) .150	(60.96) 2.400	(53.34) 2.100	(3.81) .150	(52.07) 2.050		
46	(3.81) .150	(63.50) 2.500	(55.88) 2.200	(3.81) .150	(54.61) 2.150		
48	(3.81) .150	(66.04) 2.600	(58.42) 2.300	(3.81) .150	(57.15) 2.250		
50	(3.81) .150	(68.58) 2.700	(60.96) 2.400	(3.81) .150	(59.69) 2.350		
52	(3.81) .150	(71.12) 2.800	(63.50) 2.500	(3.81) .150	(62.23) 2.450		
54	(3.81) .150	(73.66) 2.900	(66.04) 2.600	(3.81) .150	(64.77) 2.550		
56	(3.81) .150	(76.20) 3.000	(68.58) 2.700	(3.81) .150	(67.31) 2.650		
58	(3.81) .150	(78.74) 3.100	(71.12) 2.800	(3.81) .150	(69.85) 2.750		
60	(3.81) .150	(81.28) 3.200	(73.66) 2.900	(3.81) .150	(72.39) 2.850		
62	(3.81) .150	(83.82) 3.300	(76.20) 3.000	(3.81) .150	(74.93) 2.950		
64	(3.81) .150	(86.36) 3.400	(78.74) 3.100	(3.81) .150	(77.47) 3.050		
66	(3.81) .150	(88.90) 3.500	(81.28) 3.200	(3.81) .150	(80.01) 3.150		
68	(3.81) .150	(91.44) 3.600	(83.82) 3.300	(3.81) .150	(82.55) 3.250		
70	(3.81) .150	(93.98) 3.700	(86.36) 3.400	(3.81) .150	(85.09) 3.350		
72	(3.81) .150	(96.52) 3.800	(88.90) 3.500	(3.81) .150	(87.63) 3.450		

ADD REF. DIMENSION DEC. NO. UCP2007-0751 DRAWN BY: 2006/09/28 CHECKED BY: 2006/10/03 APPROVED BY: 2006/10/19	QUALITY SYMBOLS	GENERAL TOLERANCES (UNLESS SPECIFIED)	DIMENSION STYLE	SCALE	DESIGN UNITS	THIRD ANGLE PROJECTION	
	▽=0 ▽=0	4 PLACES ± --- ± --- 3 PLACES ± --- ± .005 2 PLACES ± 0.13 ± .01 1 PLACE ± 0.25 ± --- ANGULAR ±1/2°	mm INCH	DRAWN BY DATE EIK 1988/03/10 CHECKED BY DATE EIK 1988/03/10 APPROVED BY DATE WAZ 1988/03/10	4:1	INCH	THIRD ANGLE PROJECTION
	DRAFT WHERE APPLICABLE MUST REMAIN WITHIN DIMENSIONS	SEE CHART	MATERIAL NO.	DOCUMENT NO.	SDA-70567-****	SHEET NO. 2 OF 7	
	THIS DRAWING CONTAINS INFORMATION THAT IS PROPRIETARY TO MOLEX INCORPORATED AND SHOULD NOT BE USED WITHOUT WRITTEN PERMISSION						

ENGINEERING NUMBER A-70567	MANUFACTURE RELEASE STATUS	L REF.	G ± .015 (0.38)	CONNECTOR END PLATING		P.C. BOARD END PLATING		PACKAGING INFORMATION PK-70875-
				TYPE	J MEAS.	TYPE	M MEAS.	
-0205/-0238	R.F.M.	.130 (3.30)	.315 (8.00)	TIN	.100 (2.54)	TIN	.050 (1.27)	0018
-0239/-0272								0018
-0273/-0306	R.F.M.	.130 (3.30)	.315 (8.00)	15 GOLD	.100 (2.54)	TIN	.050 (1.27)	0018
-0307/-0340								0018
-0341/-0374	R.F.M.	.130 (3.30)	.315 (8.00)	30 GOLD	.100 (2.54)	TIN	.050 (1.27)	0018
-0375/-0408								

NO. OF CKTS	OPTION "B"		OPTION "B"		OPTION "B"								NO. OF CKTS
	15-80-0067	A-70567-0205	AX-70567-0239	15-80-0069	A-70567-0273	AX-70567-0307	15-80-1061	A-70567-0341	AX-70567-0375				
	15-80-0087	A-70567-0206	AX-70567-0240	15-80-0089	A-70567-0274	AX-70567-0308	15-80-1081	A-70567-0342	AX-70567-0376				
	15-80-0101	A-70567-0207	AX-70567-0241	15-80-0109	A-70567-0275	AX-70567-0309	15-80-1101	A-70567-0343	AX-70567-0377				
	15-80-0127	A-70567-0208	AX-70567-0242	15-80-0129	A-70567-0276	AX-70567-0310	15-80-1121	A-70567-0344	AX-70567-0378				
	15-80-0147	A-70567-0209	AX-70567-0243	15-80-0149	A-70567-0277	AX-70567-0311	15-80-1141	A-70567-0345	AX-70567-0379				
	15-80-0167	A-70567-0210	AX-70567-0244	15-80-0169	A-70567-0278	AX-70567-0312	15-80-1161	A-70567-0346	AX-70567-0380				
	15-80-0187	A-70567-0211	AX-70567-0245	15-80-0189	A-70567-0279	AX-70567-0313	15-80-1181	A-70567-0347	AX-70567-0381				
	15-80-0207	A-70567-0212	AX-70567-0246	15-80-0209	A-70567-0280	AX-70567-0314	15-80-1201	A-70567-0348	AX-70567-0382				
	15-80-0227	A-70567-0213	AX-70567-0247	15-80-0229	A-70567-0281	AX-70567-0315	15-80-1221	A-70567-0349	AX-70567-0383				
	15-80-0247	A-70567-0214	AX-70567-0248	15-80-0249	A-70567-0282	AX-70567-0316	15-80-1241	A-70567-0350	AX-70567-0384				
	15-80-0267	A-70567-0215	AX-70567-0249	15-80-0269	A-70567-0283	AX-70567-0317	15-80-1261	A-70567-0351	AX-70567-0385				
	15-80-0287	A-70567-0216	AX-70567-0250	15-80-0289	A-70567-0284	AX-70567-0318	15-80-1281	A-70567-0352	AX-70567-0386				
	15-80-0307	A-70567-0217	AX-70567-0251	15-80-0309	A-70567-0285	AX-70567-0319	15-80-1301	A-70567-0353	AX-70567-0387				
	15-80-0327	A-70567-0218	AX-70567-0252	15-80-0329	A-70567-0286	AX-70567-0320	15-80-1321	A-70567-0354	AX-70567-0388				
	15-80-0347	A-70567-0219	AX-70567-0253	15-80-0349	A-70567-0287	AX-70567-0321	15-80-1341	A-70567-0355	AX-70567-0389				
	15-80-0367	A-70567-0220	AX-70567-0254	15-80-0369	A-70567-0288	AX-70567-0322	15-80-1361	A-70567-0356	AX-70567-0390				
	15-80-0387	A-70567-0221	AX-70567-0255	15-80-0389	A-70567-0289	AX-70567-0323	15-80-1381	A-70567-0357	AX-70567-0391				
	15-80-0407	A-70567-0222	AX-70567-0256	15-80-0409	A-70567-0290	AX-70567-0324	15-80-1401	A-70567-0358	AX-70567-0392				
	15-80-0427	A-70567-0223	AX-70567-0257	15-80-0429	A-70567-0291	AX-70567-0325	15-80-1421	A-70567-0359	AX-70567-0393				
	15-80-0447	A-70567-0224	AX-70567-0258	15-80-0449	A-70567-0292	AX-70567-0326	15-80-1441	A-70567-0360	AX-70567-0394				
	15-80-0467	A-70567-0225	AX-70567-0259	15-80-0469	A-70567-0293	AX-70567-0327	15-80-1461	A-70567-0361	AX-70567-0395				
	15-80-0487	A-70567-0226	AX-70567-0260	15-80-0489	A-70567-0294	AX-70567-0328	15-80-1481	A-70567-0362	AX-70567-0396				
	15-80-0507	A-70567-0227	AX-70567-0261	15-80-0509	A-70567-0295	AX-70567-0329	15-80-1501	A-70567-0363	AX-70567-0397				
	15-80-0527	A-70567-0228	AX-70567-0262	15-80-0529	A-70567-0296	AX-70567-0330	15-80-1521	A-70567-0364	AX-70567-0398				
	15-80-0547	A-70567-0229	AX-70567-0263	15-80-0549	A-70567-0297	AX-70567-0331	15-80-1541	A-70567-0365	AX-70567-0399				
	15-80-0567	A-70567-0230	AX-70567-0264	15-80-0569	A-70567-0298	AX-70567-0332	15-80-1561	A-70567-0366	AX-70567-0400				
	15-80-0587	A-70567-0231	AX-70567-0265	15-80-0589	A-70567-0299	AX-70567-0333	15-80-1581	A-70567-0367	AX-70567-0401				
	15-80-0607	A-70567-0232	AX-70567-0266	15-80-0609	A-70567-0300	AX-70567-0334	15-80-1601	A-70567-0368	AX-70567-0402				
	15-80-0627	A-70567-0233	AX-70567-0267	15-80-0629	A-70567-0301	AX-70567-0335	15-80-1621	A-70567-0369	AX-70567-0403				
	15-80-0647	A-70567-0234	AX-70567-0268	15-80-0649	A-70567-0302	AX-70567-0336	15-80-1641	A-70567-0370	AX-70567-0404				
	15-80-0667	A-70567-0235	AX-70567-0269	15-80-0669	A-70567-0303	AX-70567-0337	15-80-1661	A-70567-0371	AX-70567-0405				
	15-80-0687	A-70567-0236	AX-70567-0270	15-80-0689	A-70567-0304	AX-70567-0338	15-80-1681	A-70567-0372	AX-70567-0406				
	15-80-0707	A-70567-0237	AX-70567-0271	15-80-0709	A-70567-0305	AX-70567-0339	15-80-1701	A-70567-0373	AX-70567-0407				
	15-80-0727	A-70567-0238	AX-70567-0272	15-80-0729	A-70567-0306	AX-70567-0340	15-80-1721	A-70567-0374	AX-70567-0408				

<b>UPDATE TITLE BLOCK</b> DEC. NO. UCP/2007-0751 DRAWN BY: T. DORWINSKI CHECKED BY: CHIKADIRI APPROVAL: APPR:ESH, TH DATE: 2006/09/28 DATE: 2006/10/03 DATE: 2006/10/19	QUALITY SYMBOLS ▽=0 ▽=0	GENERAL TOLERANCES (UNLESS SPECIFIED) <table border="1"> <tr><th></th><th>mm</th><th>INCH</th></tr> <tr><td>3 PLACES</td><td>± .100</td><td>± .004</td></tr> <tr><td>2 PLACES</td><td>± .125</td><td>± .005</td></tr> <tr><td>1 PLACE</td><td>± .150</td><td>± .006</td></tr> </table>		mm	INCH	3 PLACES	± .100	± .004	2 PLACES	± .125	± .005	1 PLACE	± .150	± .006	DIMENSION STYLE IN/MM	SCALE ---	DESIGN UNITS INCH	THIRD ANGLE PROJECTION
		mm	INCH															
	3 PLACES	± .100	± .004															
	2 PLACES	± .125	± .005															
1 PLACE	± .150	± .006																
DRAWN BY: EIK DATE: 1988/03/10 CHECKED BY: EIK DATE: 1988/03/10 APPROVED BY: WAZ DATE: 1988/03/10	TITLE 4 SIDES SHROUDED WAFER HIGH TEMP. .100(2.54) GRID W/ .025(0.64)	MATERIAL NO. SEE CHART	DOCUMENT NO. SDA-70567-****	SHEET NO. 6 OF 7														
DRAFT WHERE APPLICABLE MUST REMAIN WITHIN DIMENSIONS		THIS DRAWING CONTAINS INFORMATION THAT IS PROPRIETARY TO MOLEX INCORPORATED AND SHOULD NOT BE USED WITHOUT WRITTEN PERMISSION																
SIZE D																		