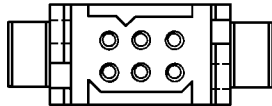
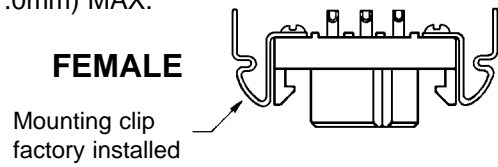
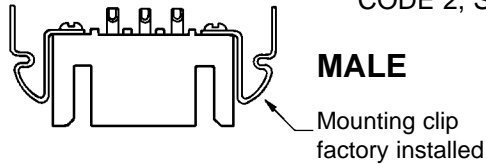
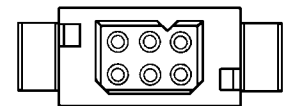
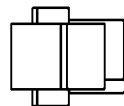
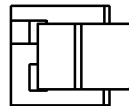


POWER CONNECTION SYSTEMS PANEL MOUNT CONNECTORS

QUICK RELEASE MOUNTING CLIP
CODE 2, SOLDER – 18 AWG (1.0mm) MAX.



Typical part number:
PLB06M206C1

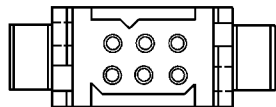
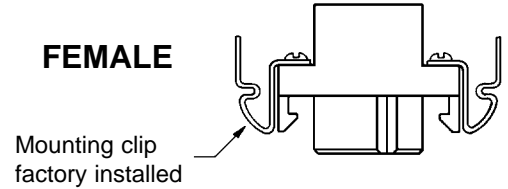
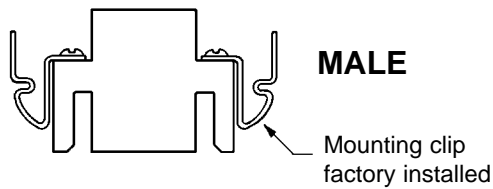


Typical part number:
PLB06F206C1

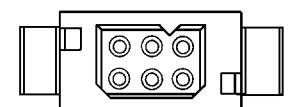
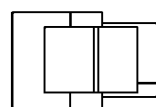
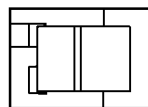
For connection system 8

Power Connection Systems Panel Mount Connectors

QUICK RELEASE MOUNTING CLIP
REMOVABLE CONTACT TYPE



Typical part number:
PLB06M1060

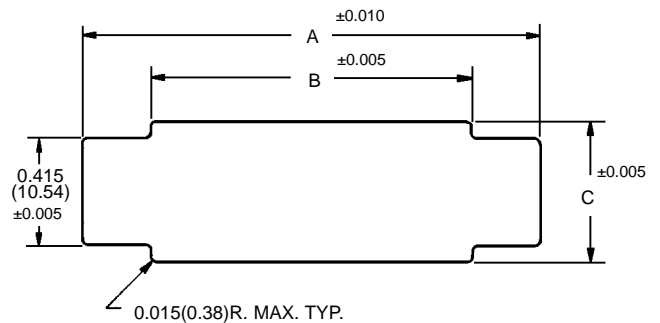


Typical part number:
PLB06F1060

For connection system 8

PANEL CUTOUT

CONNECTOR VARIANT	A	B	C
PLA 03	1.600 (40.64)	1.168 (29.67)	0.445 (11.30)
PLA 04	1.798 (45.67)	1.366 (34.70)	0.445 (11.30)
PLA 06	2.192 (55.68)	1.760 (44.70)	0.445 (11.30)
PLA 08	2.586 (65.68)	2.154 (54.71)	0.445 (11.30)
PLB 06	1.600 (40.64)	1.168 (29.67)	0.643 (16.33)
PLB 08	1.798 (45.67)	1.366 (34.70)	0.643 (16.33)
PLB 12	2.192 (55.68)	1.760 (44.70)	0.643 (16.33)
PLB 16	2.586 (65.68)	2.154 (54.71)	0.643 (16.33)
PLC 09	1.600 (40.64)	1.168 (29.67)	0.839 (21.31)
PLC 12	1.798 (45.67)	1.366 (34.70)	0.839 (21.31)
PLC 18	2.192 (55.68)	1.760 (44.70)	0.839 (21.31)
PLC 24	2.586 (65.68)	2.154 (54.71)	0.839 (21.31)
PLC 30	2.980 (75.69)	2.548 (64.72)	0.839 (21.31)

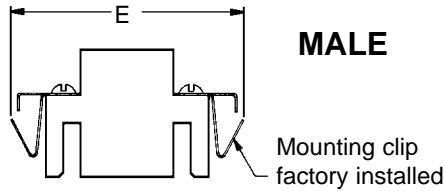


Maximum panel thickness: 0.063(1.60) nominal.

DIMENSIONS ARE IN INCHES (MILLIMETERS).
ALL DIMENSIONS ARE SUBJECT TO CHANGE.

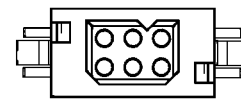
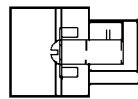
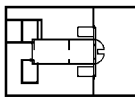
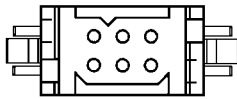
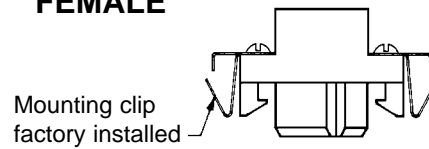
POWER CONNECTION SYSTEMS PANEL MOUNT CONNECTORS

*FIXED STYLE MOUNTING CLIP



MALE

FEMALE



Typical part number:
PLB06M10810

PART NUMBER	PANEL THICKNESS
PL*****81*	0.040 (1.02)
PL*****82*	0.060 (1.52)
PL*****83*	0.090 (2.29)

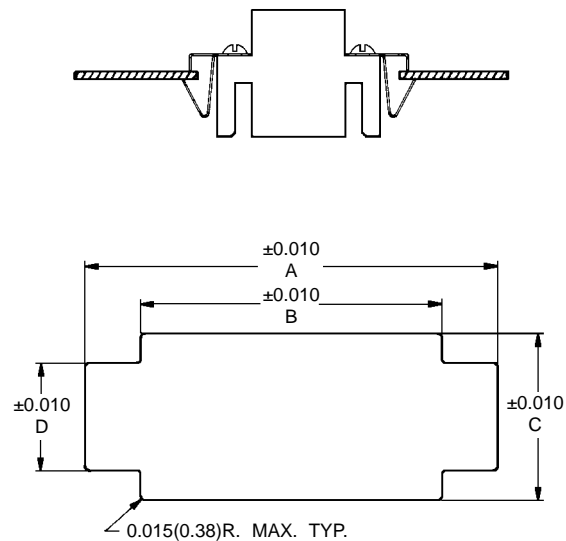
Typical part number:
PLB06F10810

For connection system 8

Clip material: Beryllium copper, tin plated

* May be used with either fixed solder or removable contact connector insulators.

CONNECTOR VARIANT	A	B	C	D	E
PLA 03	1.380 (35.05)	1.150 (29.21)	0.445 (11.30)	0.193 (4.90)	1.598 (40.59)
PLA 04	1.578 (40.08)	1.348 (34.24)	0.445 (11.30)	0.193 (4.90)	1.796 (45.62)
PLA 06	1.972 (50.09)	1.742 (44.25)	0.445 (11.30)	0.193 (4.90)	2.190 (55.63)
PLA 08	2.366 (60.10)	2.136 (54.25)	0.445 (11.30)	0.193 (4.90)	2.584 (65.63)
PLB 06	1.380 (35.05)	1.150 (29.21)	0.643 (16.33)	0.300 (7.62)	1.598 (40.59)
PLB 08	1.578 (40.08)	1.348 (34.24)	0.643 (16.33)	0.300 (7.62)	1.796 (45.62)
PLB 12	1.972 (50.09)	1.742 (44.25)	0.643 (16.33)	0.300 (7.62)	2.190 (55.63)
PLB 16	2.366 (60.10)	2.136 (54.25)	0.643 (16.33)	0.300 (7.62)	2.584 (65.63)
PLC 09	1.380 (35.05)	1.150 (29.21)	0.839 (21.31)	0.300 (7.62)	1.598 (40.59)
PLC 12	1.578 (40.08)	1.348 (34.24)	0.839 (21.31)	0.300 (7.62)	1.796 (45.62)
PLC 18	1.972 (50.09)	1.742 (44.25)	0.839 (21.31)	0.300 (7.62)	2.190 (55.63)
PLC 24	2.366 (60.10)	2.136 (54.25)	0.839 (21.31)	0.300 (7.62)	2.584 (65.63)
PLC 30	2.760 (70.10)	2.530 (64.26)	0.839 (21.31)	0.300 (7.62)	2.978 (75.64)



DIMENSIONS ARE IN INCHES (MILLIMETERS).
ALL DIMENSIONS ARE SUBJECT TO CHANGE.