

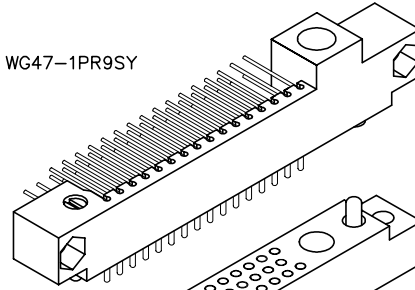
# 3 • ROW Coax Connectors PC Card to Chassis or Board

.100"

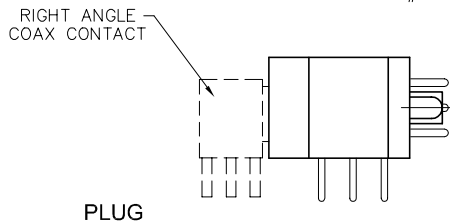
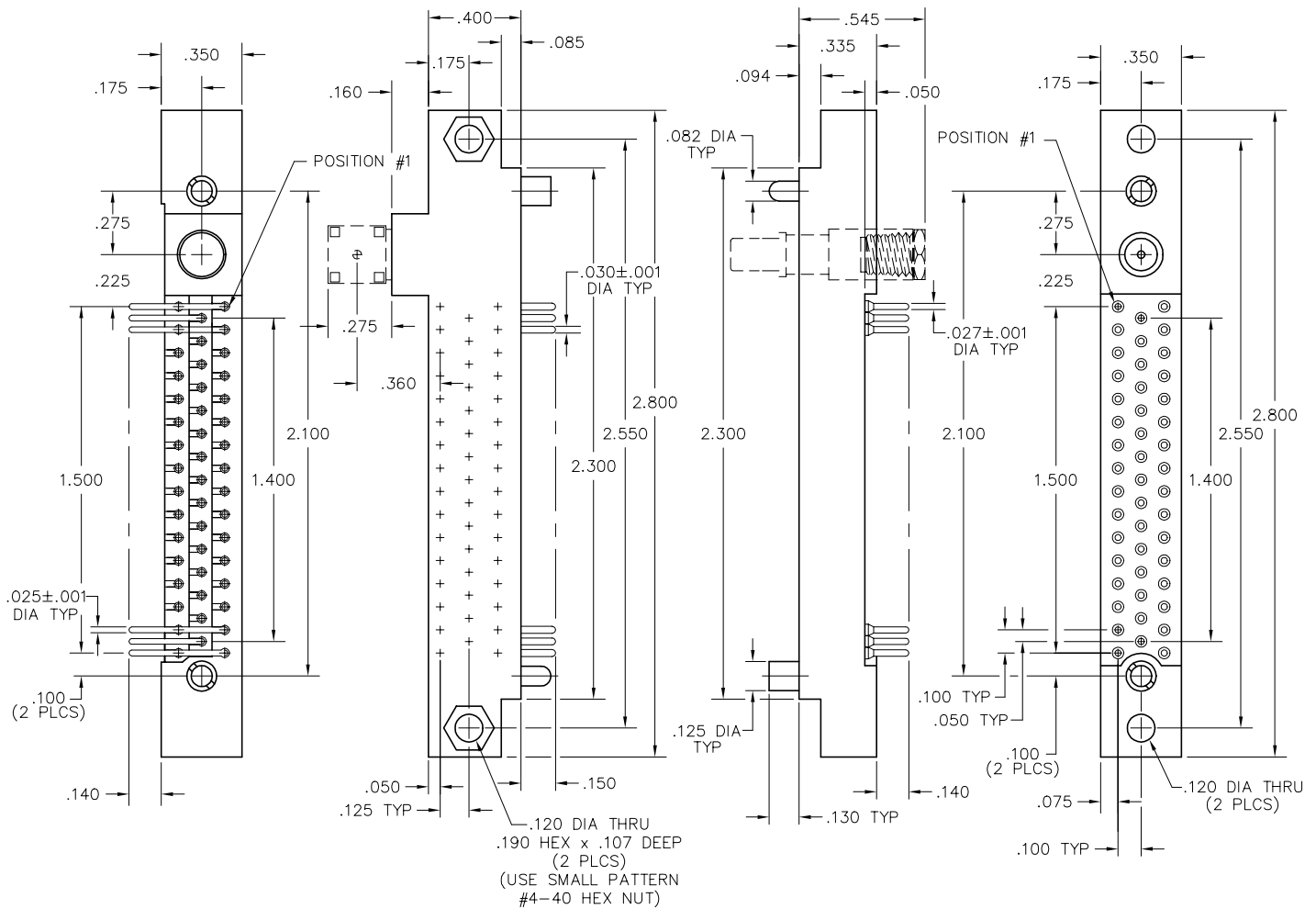
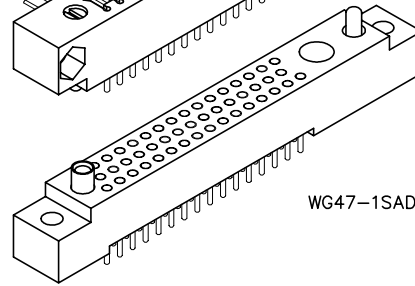
**WG - WG**

47-1 Contacts

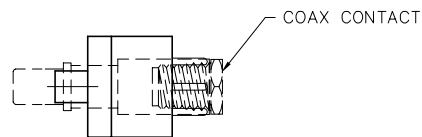
WG47-1PR9SY



WG47-1SAD9SY



PLUG



RECEPTACLE

PLUG: WG 47-1 PR11 SY  
 RECEPTACLE: WG 47-1 SAD9 SY  
 XX 47-1 XXXX XX

**PLUG**

**RECEPTACLE**

**SERIES**

WG Plug, right angle, with mounting ears | WG Receptacle, straight, with mounting ears

**SIZE**

47-1 47 right angle signal pins, plus 1 right angle or straight removable coax socket | 47-1 47 straight signal pins, plus 1 straight removable coax pin

**CONTACTS**

**TYPE CONTACTS/TERMINATIONS:**  
 PR7 Pin, right angle, dip solder, .109" x .025" dia  
 PR9 Pin, right angle, dip solder, .140" x .025" dia  
 PR11 Pin, right angle, dip solder, .172" x .025" dia

**TYPE CONTACTS/TERMINATIONS:**  
 SAC Socket, straight, solder cup (.035" I.D.)  
 SAD9 Socket, straight, dip solder, .140" x .027" dia  
 SAD11 Socket, straight, dip solder, .172" x .027" dia  
 SAD15 Socket, straight, dip solder, .234" x .027" dia

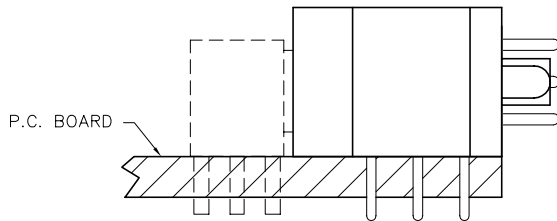
**HARDWARE**

SY Guide set | SY Guide set  
 SY-# Guide set, polarized | SY-# Guide set, polarized

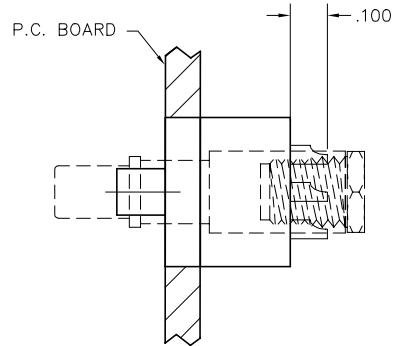
**OPTIONS**

- Removable type coax contacts sold separately. See "Coax Contacts" under next tab for instructions.
- Coax Contacts:
 

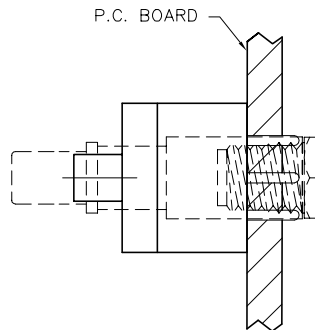
WTC188P = straight pin	WTC188S = straight socket
WTC196P = straight pin	WTC196S = straight socket
WTC085P = straight pin	WTC085S = straight socket
	WTC10SRD9 = right angle socket
- Option Codes: Add to the end of the part number. Example: WG47-1SACSY-C34. Call factory for additional codes.
- 342 Remove mounting ears. (.250" each end)
- C34 Remove .225" standoff so connector is flush to board (receptacle only).
- G69 Solder cups are fixed in an outward orientation, otherwise contacts can rotate.



WG47-1PR9SY  
P.C. BOARD EXAMPLE



WG47-1SACS  
CHASSIS EXAMPLE



WG47-1SAD9SY  
MOTHERBOARD EXAMPLE