

4

3

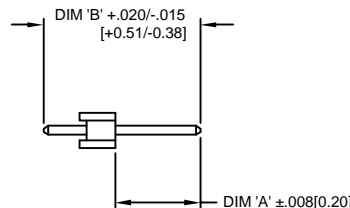
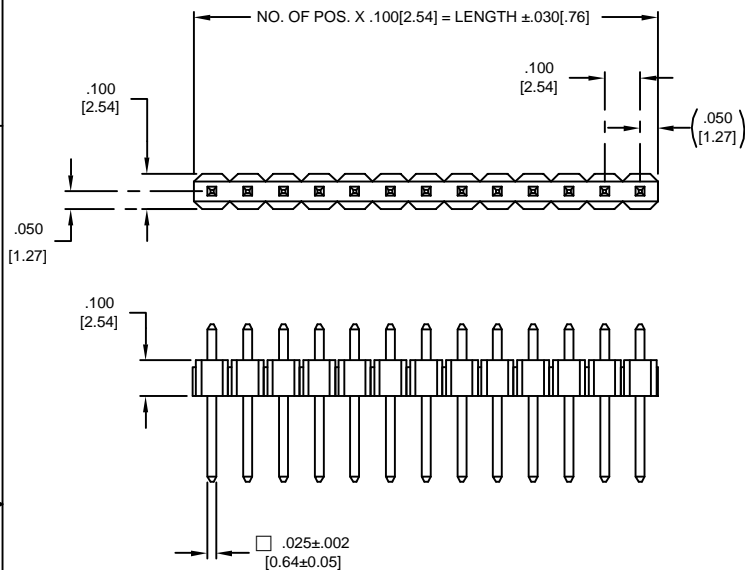
2

1

PART NO. CA-SXX-XXX-XX

REVISIONS

LTR	DESCRIPTION	DATE	APPROVED
A	INITIAL RELEASE SEE DO 5226	C.P. 7-28-03	A.J.
B	SEE DO 5783	C.P. 7-25-05	L.F.
C	SEE DO 5954	C.P. 12-23-05	I.M.
D	SEE DO 6197	C.P. 09-08-06	I.M.



CA-SXX - XXX - XX

NO. OF ROW
S = SINGLE ROWNO. OF
POSITIONS
01-40 POSITIONSPOST EXTENSION (DIM 'A')
24 = .240 [6.10] STANDARDPLATING
B = .000010 [.00025] GOLD
C = .000015 [.00038] GOLD
TAIL AREA : .000150 [.00381] TIN
UNDERPLATE : .000075 [.00190] NICKEL
T = .000150 [.00381] TIN OVER .000075 [.00190] NICKEL

PIN LENGTH (DIM 'B')


44 = .440 [11.18] STANDARD
50 = .500 [12.70]
53 = .530 [13.46]
57 = .570 [14.48]
63 = .630 [16.00]
73 = .730 [18.54]
85 = .850 [21.59]
113 = 1.130 [28.70]

SINGLE ROW

2. SPECIFICATIONS :

ENVIRONMENTAL :
TEMPERATURE RANGE : -55° TO +120° CMECHANICAL :
INSULATOR MATERIAL : GLASS FILLED POLYESTER, BLACK, UL94V-0
CONTACT MATERIAL : COPPER ALLOYELECTRICAL :
CURRENT RATING : 1 AMP
DIELECTRIC WITHSTANDING VOLTAGE : 500 Vrms
INSULATION RESISTANCE : > 1000 Megohms1. MEETS THE REQUIREMENTS OF DIRECTIVE 2002/95/EC OF THE EUROPEAN PARLIAMENT
AND OF THE COUNCIL OF 27 JANUARY 2003 ON THE RESTRICTION OF THE USE OF CERTAIN
HAZARDOUS SUBSTANCES IN ELECTRICAL AND ELECTRONIC EQUIPMENT. (ROHS)

NOTES : UNLESSS OTHERWISE SPECIFIED

DIMENSIONS ARE IN INCHES TOLERANCES ARE :		APPROVALS	DATE	 CIRCUIT ASSEMBLY CORP. 18 THOMAS ST., IRVINE, CALIFORNIA 92618-2777	
DECIMALS XX ±.005 XXX ±.002	ANGLES ±3°	DRAWN CUONG.P	7-28-03		
DIMENSIONS IN BRACKETS (XXX) ARE IN MILLIMETERS TOLERANCES ARE :		CHECKED A.JOCHEN	7-28-03	CONNECTOR ASSEMBLY CA-SXX-XXX-XX .025" SQ., STRIP HEADER "ROHS COMPLIANT"	
DECIMALS X ±.25 XX ±.13	ANGLES ±3°	THE INFORMATION AND DESIGN DIS- CLOSED HEREIN WAS ORIGINATED BY AND IS THE PROPERTY OF CIRCUIT ASSEMBLY CORPORATION. CIRCUIT ASSEMBLY CORPORATION RESERVES ALL PATENT, PROPRIETARY, DESIGN, MANUFACTURING, REPRODUCTION, USE AND SALES RIGHTS THEREIN, AND TO ANY ARTICLE DISCLOSED HEREIN EXCEPT TO THE EXTENT RIGHTS ARE EXPRESSLY GRANTED TO OTHERS. THE FOLLOWING DOES NOT APPLY TO FORNOR PROPRIETARY RIGHTS.		SIZE C	CODE IDENT NO. 52072
DO NOT SCALE DRAWING		DRAWING NO. 620454		REV. D	SCALE: 4 : 1
				SHEET 1 OF 1	

4

3

2

1