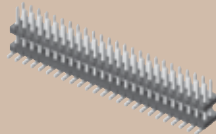
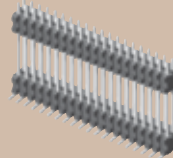




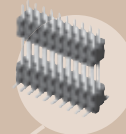
FW-25-03-G-D-163-120



FW-10-05-G-D-400-090-A



FW-20-05-G-D-500-075



Surface Mount **SMT**

# .050" BOARD STACKER FW SERIES

## SPECIFICATIONS

For complete specifications and recommended PCB layouts see [www.samtec.com?FW](http://www.samtec.com?FW)

**Insulator Material:** Black Liquid Crystal Polymer

**Terminal Material:** Phosphor Bronze

**Plating:** Sn or Au over 50µ" (1,27µm) Ni

**Current Rating:** 1.75A @ 80°C ambient

**Operating Temp Range:** -55°C to +125°C

**RoHS Compliant:** Yes

### Processing:

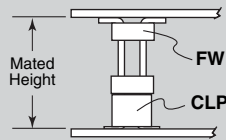
**Max Processing Temp:** 230°C for 60 seconds, or 260°C for 20 seconds 3x

**Lead-Free Solderable:** Yes

**SMT Lead Coplanarity:** (0,10mm) .004" max (02-30) (0,15mm) .006" max (31-50)

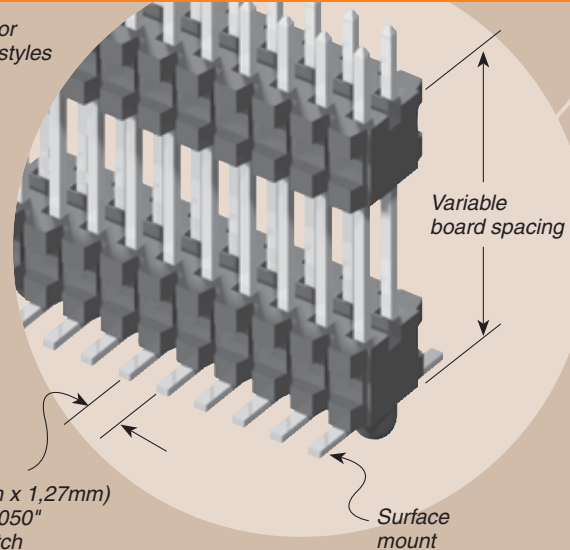
Mates with: CLP, FFSD, FLE

## APPLICATIONS



Lead Style	CLP	Mated Height
FW		
FW-XX-03-X-X-233-065	-02	(8,13) .320
FW-XX-03-X-X-303-065		(9,91) .390

Low profile or skyscraper styles



(1,27mm x 1,27mm) .050" x .050" micro pitch

FW	NO. PINS PER ROW	LEAD STYLE	PLATING OPTION	D	STACKER HEIGHT	POST HEIGHT	OPTION									
	02 thru 50	Specify LEAD STYLE from chart	<p><b>-G</b> = 10µ" (0,25µm) Gold on post, Gold flash on tail</p> <p><b>-L</b> = 10µ" (0,25µm) Gold on post, Matte Tin on tail</p> <p><b>-F</b> = Gold flash on post, Matte Tin on tail</p>		<p><b>"XXX"</b> = Stacker Height (in inches)</p> <p>Example: -250 = (6,35mm) .250"</p>	<p><b>"XXX"</b> = Post Height (in inches)</p> <p>(1,65mm) .065" minimum</p> <p>Example: -065 = (1,65mm) .065"</p>	<p><b>-ES</b> = End Shroud (-075 post height only. Mate only with CLP) (5,46mm) .215" to (15,49mm) .610" stacker height only 9 pins/row min.</p> <p><b>-EP</b> = End Shroud with Guide Post (-075 post height only. Mate only with CLP.) (5,46mm) .215" to (15,49mm) .610" stacker height only 9 pins/row min.</p> <p><b>-A</b> = Alignment Pin (3 positions min.) (5,46mm) .215" to (15,75mm) .620" stacker height only</p> <p><b>-P</b> = Pick &amp; Place Pad (5 positions min.)</p> <p><b>-TR</b> = Tape &amp; Reel (Post+Stacker Height = (17,46mm) .6875 max.)</p>									
		<table border="1"> <thead> <tr> <th>LEAD STYLE</th> <th>STACKER HEIGHT</th> <th>STACKER + POST</th> </tr> </thead> <tbody> <tr> <td>-03</td> <td>(5,46) .215 to (8,51) .335</td> <td>(7,11) .280 to (10,16) .400</td> </tr> <tr> <td>-05</td> <td>(8,64) .340 to (15,49) .610</td> <td>(10,29) .405 to (17,15) .675</td> </tr> </tbody> </table>	LEAD STYLE	STACKER HEIGHT	STACKER + POST	-03	(5,46) .215 to (8,51) .335	(7,11) .280 to (10,16) .400	-05	(8,64) .340 to (15,49) .610	(10,29) .405 to (17,15) .675					
LEAD STYLE	STACKER HEIGHT	STACKER + POST														
-03	(5,46) .215 to (8,51) .335	(7,11) .280 to (10,16) .400														
-05	(8,64) .340 to (15,49) .610	(10,29) .405 to (17,15) .675														

**TAPE & REEL AVAILABILITY**

No tooling charges. Minimum order is the lesser of a full reel quantity or 125 pieces. Order any quantity above minimum. In-house design, manufacture. Quick turn-around.

Call Samtec for specifications and ordering information.

Note: This Series is non-standard, non-returnable.

Due to technical progress, all designs, specifications and components are subject to change without notice.

[WWW.SAMTEC.COM](http://WWW.SAMTEC.COM)