

REVISION S

DO NOT SCALE FROM THIS PRINT

TABLE 1					
LEAD STYLE	TERMINAL	'L'-OVERALL LENGTH (REF)		SPACE OPTION MAX	
-07	T-1S6-07-X-2	.430	[10.92]	.375	[9.53]
-08	T-1S6-08-X-2	.530	[13.46]	.475	[12.07]
-09	T-1S6-09-X-2	.730	[18.54]	.675	[17.15]
-10	T-1S6-10-X-2	.830	[21.08]	.775	[19.69]
-11	T-1S6-11-X-2	.930	[23.62]	.875	[22.23]
-12	T-1S6-12-X-2	1.030	[26.16]	.975	[24.77]
-13	T-1S6-13-X-2	1.230	[31.24]	1.175	[29.85]
-14	T-1S6-14-X-2	1.430	[36.32]	1.375	[34.93]
-15	T-1S6-15-X-2	.630	[16.00]	.575	[14.61]
-16	T-1S6-16-X-2	.445	[11.30]	.390	[9.91]
-17	T-1S6-17-X-2	.480	[12.19]	.425	[10.80]
-19	T-1S6-19-X-2	1.330	[33.78]	1.275	[32.39]
-20	T-1S6-20-X-2	1.130	[28.70]	1.075	[27.31]

UNLESS OTHERWISE NOTED DIMENSIONS ARE IN INCHES TOLERANCES ARE: ONE PLACE DECIMALS ± .1 [2.5] TWO PLACE DECIMALS ± .01 [0.25] THREE PLACE DECIMALS ± .005 [0.13] FOUR PLACE DECIMALS ± .0020 [0.050] ANGLES ± 2°

TITLE: .100 [2.54] HIGH TEMP TERMINAL BODY (BOARD STACKING)

DWG NO: HW-XX-XX-XX-X-XXX-XXX-XX-XXX

SHEET 1 OF 1

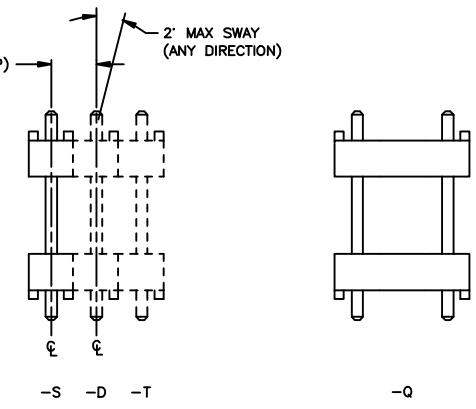
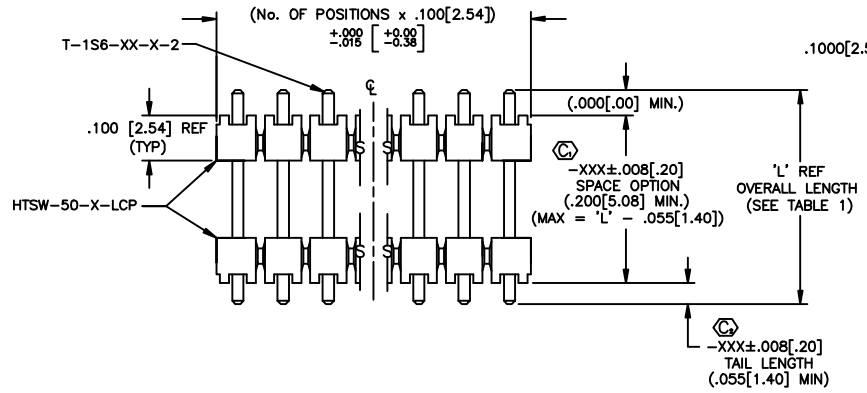
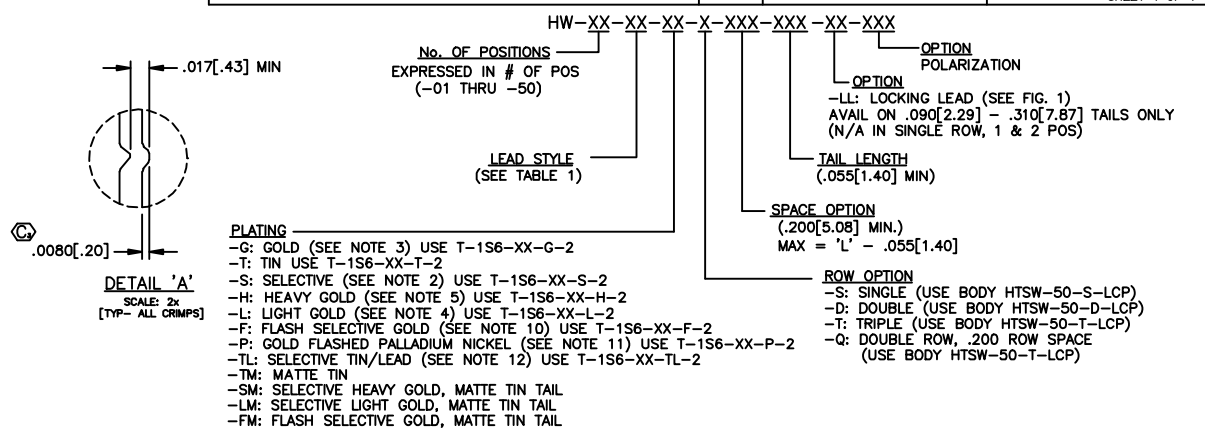
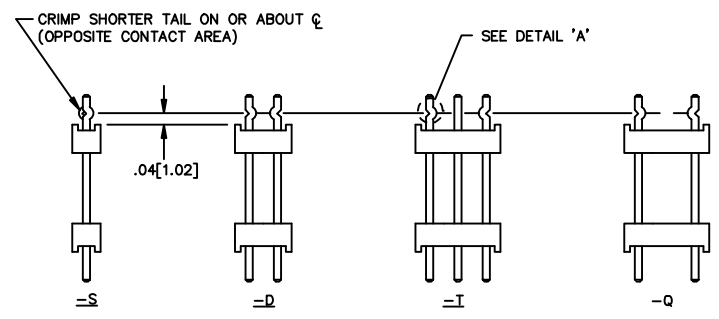


FIG. 1



- NOTES:
- HEIGHT VARIATION BETWEEN ANY TWO PINS SHALL BE .010[0.25] MAX.
 - S PLATING: GOLD WILL BE ON THE LONGER TAIL.
 - G PLATING: HEAVY GOLD ON LONGER TAIL.
 - L PLATING: GOLD ON LONGER TAIL.
 - H PLATING: HEAVY GOLD ON LONGER TAIL.
 - (⊕) REPRESENTS A CRITICAL DIMENSION FOR STATISTICAL PROCESS CONTROL USE.
 - MAX ALLOWABLE BOW: .005[0.13] IN/IN AFTER ASSEMBLY.
 - MAX PIN ROTATION IN BODY: 2°.
 - PUSHOUT FORCE SHALL BE 2 LB. MIN.
 - F PLATING: FLASH SELECTIVE GOLD ON LONGER TAIL.
 - P PLATING: GOLD FLASHED PALLADIUM NICKEL ON LONGER TAIL.
 - TL PLATING: TIN/LEAD ON LONGER TAIL.
 - PARTS ARE CUT TO SIZE.
 - CUT FLASH MAX .005[0.13].

PROPRIETARY NOTE
THIS DOCUMENT CONTAINS INFORMATION CONFIDENTIAL AND PROPRIETARY TO SAMTEC INC. AND SHALL NOT BE DISCLOSED OR TRANSMITTED TO OTHER PERSONS OR DISCLOSED TO OTHERS OR USED FOR ANY PURPOSE OTHER THAN THAT FOR WHICH IT WAS ORIGINATED WITHOUT THE EXPRESS WRITTEN CONSENT OF SAMTEC INC.

MATERIAL:
INSULATOR:
VECTRA E-130, COLOR: NATURAL

TERMINAL:
PHOSPHOR BRONZE, ALLOY No 510, GRADE A, FEDERAL SPEC. QQ-B-750, 3/4 HARD, 95 - 105 KPSI TENSILE.
MATERIAL THICKNESS: .0250±.0003

EXISPROD\ASSEMBLY\100 HW-ASM

samtec

520 PARK EAST BLVD. NEW ALBANY, INDIANA 47150
PHONE (812) 944-6733 P.O. BOX 1147
CODE 55322

MADE BY:
REIDINGER 8-27-91

HW-XX-XX-XX-X-XXX-XXX-XX-XXX

SHEET 1 OF 1