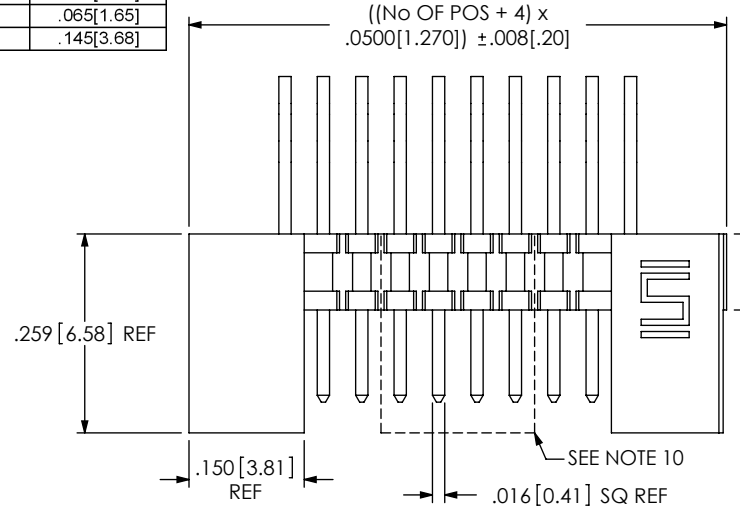
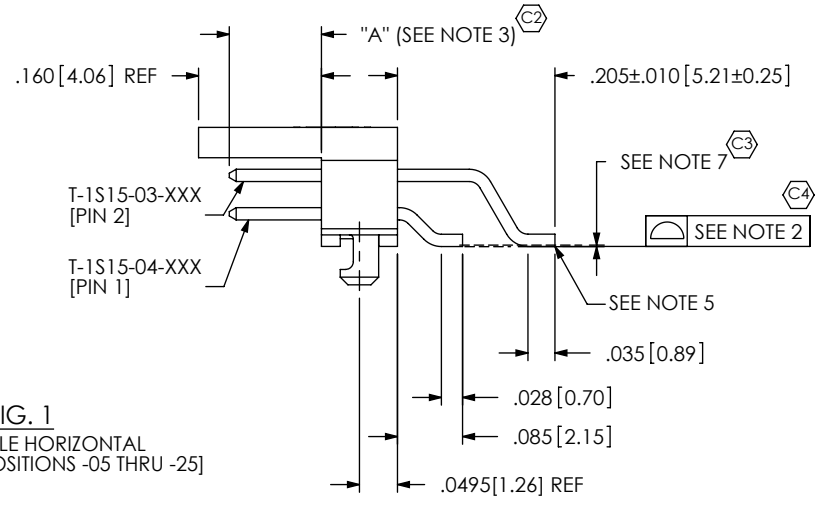
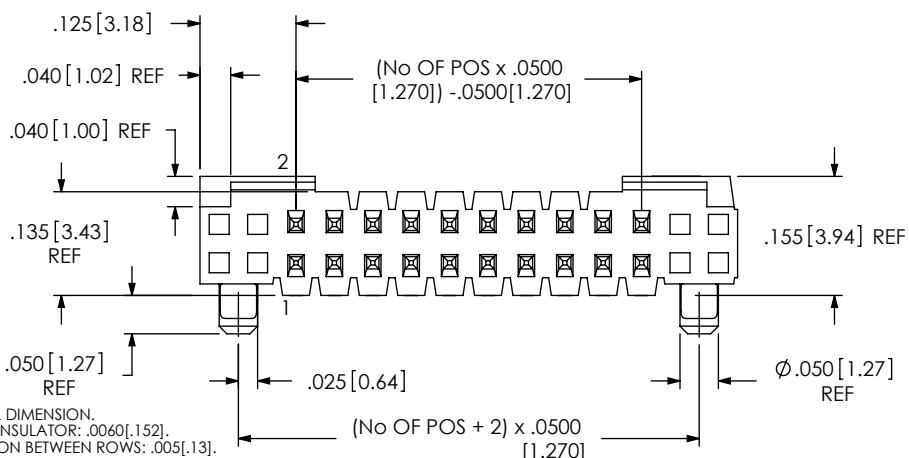


TABLE 1	
STYLE	"A"
-01	.120[3.05]
-02	.075[1.91]
-03	.065[1.65]
-04	.145[3.68]



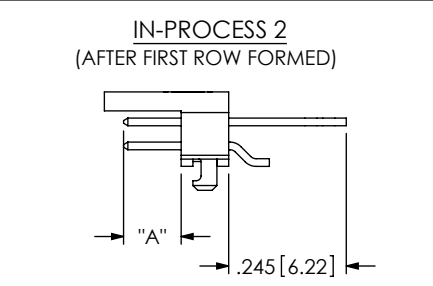
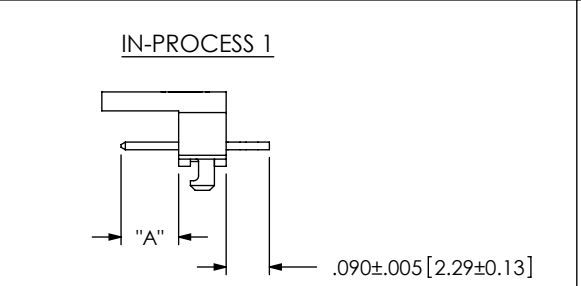
- FSH-1XX-XX-XXX-XX-XX-X-XX**
- No OF POSITIONS**
 - DH ROW SPEC: -05 THRU -25
 - RA ROW SPEC: -05 THRU -46 (PER ROW) (INCREMENTS OF 5 STD)
 - OPTION**
 - TR: TAPE & REEL (NOT AVAILABE WITH -RA OPTION)
 - C: POLYAMIDE FILM (USE K-500-300) (10 POSITION MIN.) (SEE FIG. 3, SHT 2) (NOT AVAILABE WITH -RA)
 - SL: SOLDER LOCKS
 - ROW/TAIL SPECIFICATION**
 - DH: DOUBLE HORIZONTAL (USE FSH-XX-D-ES-XX-XX)
 - RA: RIGHT ANGLE (USE FSH-XX-D-ES-XX-XX)
 - PLATING SPECIFICATION**
 - L: LIGHT SELECTIVE (USE T-1S15-XX-L)
 - F: FLASH SELECTIVE (USE T-1S15-XX-F)
 - LM: LIGHT SELECTIVE GOLD/MATTE TIN TAIL (USE T-1S15-XX-L)
 - FM: FLASH SELECTIVE GOLD/MATTE TIN TAIL (USE T-1S15-XX-F)
 - STL: SELECTIVE GOLD CONTACT, TIN/LEAD TAIL (USE T-1S15-XX-STL)
 - FTL: FLASH SELECTIVE GOLD CONTACT, TIN/LEAD TAIL (USE T-1S15-XX-FTL)



- NOTES:
- ① REPRESENTS A CRITICAL DIMENSION.
 - COPLANARITY TO INCLUDE INSULATOR: .0060[.152].
 - MAXIMUM HEIGHT VARIATION BETWEEN ROWS: .005[.13].
 - MINIMUM PUSHOUT FORCE: .5 LB.
 - MAXIMUM BURR ALLOWED [SHEARED TAILS]: .002[.05].
 - MAXIMUM ALLOWABLE BOW: .002[.05] INCH/INCH AFTER ASSEMBLY.
 - PIN 1 TO BE FLUSH TO .001 ABOVE OR BELOW LINE MADE BY BODY, PIN 2 TO BE FLUSH TO .004 ABOVE LINE MADE BY BODY AND PIN 1.
 - MAX FLASH TO BE .015[.38].
 - END SHROUDS NOT TO BE CUT.
 - POSITIONS 13-28 (ONCE CUT) TO HAVE 1 TAB EVENLY SPACED BETWEEN THE FIRST AND LAST CORE. POSITIONS 29-46 TO HAVE TWO TABS EVENLY SPACED BETWEEN THE FIRST AND LAST CORES.
 - FOR POSITIONS 13-27, MIDDLE SHROUD WILL NOT BE CENTERED FOR ODD POSITION PARTS.

PATENT NUMBERS
6159045

FIG. 1
-DH: DOUBLE HORIZONTAL
[AVAILABLE IN POSITIONS -05 THRU -25]



UNLESS OTHERWISE SPECIFIED, DIMENSIONS ARE IN INCHES. TOLERANCES ARE:

DECIMALS	ANGLES
.XX: $\pm .01[.3]$	2°
.XXX: $\pm .005[.13]$	
.XXXX: $\pm .0020[.051]$	

PROPRIETARY NOTE
THIS DOCUMENT CONTAINS INFORMATION CONFIDENTIAL AND PROPRIETARY TO SAMTEC, INC. AND SHALL NOT BE REPRODUCED OR TRANSFERRED TO OTHER DOCUMENTS OR DISCLOSED TO OTHERS OR USED FOR ANY PURPOSE OTHER THAN THAT WHICH IT WAS OBTAINED WITHOUT THE EXPRESSED WRITTEN CONSENT OF SAMTEC, INC.

MATERIAL:
VETRA E130I, COLOR: BLACK
TERMINAL: PHOS BRONZE, THICKNESS: .0160 SQ

520 PARK EAST BLVD, NEW ALBANY, IN 47150
PHONE: 812-944-6733 FAX: 812-948-5047
e-Mail: info@SAMTEC.com code: 53322

DO NOT SCALE DRAWING SHEET SCALE: 2.5:1
F:\DWG\MISC\MKTG\FSH-1XX-XX-XXX-XX-XX-X-XX-MLDDRW

DESCRIPTION:
.050 SHROUDED TERMINAL ASSEMBLY
DWG. NO.
FSH-1XX-XX-XXX-XX-XX-X-XX
BY: DEANP 9/8/1999 SHEET 1 OF 2

FIG. 2

-RA: RIGHT ANGLE
(SAME AS FIG. 1, UNLESS OTHERWISE STATED)

[AVAILABLE IN POSITIONS -05 THRU -46]

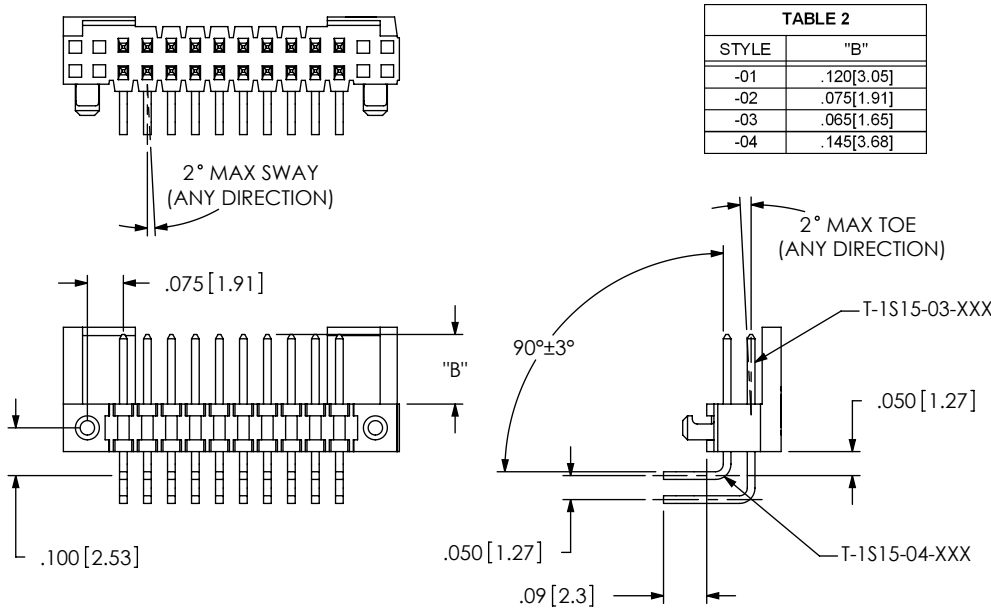
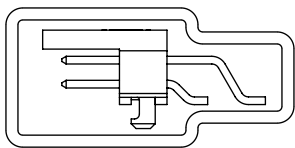


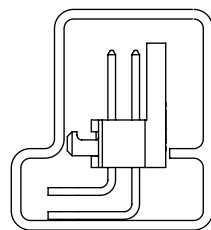
TABLE 2	
STYLE	"B"
-01	.120[3.05]
-02	.075[1.91]
-03	.065[1.65]
-04	.145[3.68]

PACKAGING VIEW
TUBE ALL POSITIONS



-DH

TUBE: PT-1-24-02-53
PLUG: TP-09



-RA

TUBE: PT-1-24-01-45
PLUG: TP-07

FIG. 3

-C: POLYAMIDE FILM

NOTE: "R" = USE MEASURED DIMENSION (REF)
"S" = $\{("R" - .1772[4.501]) / 2\} \pm .020[.51]$

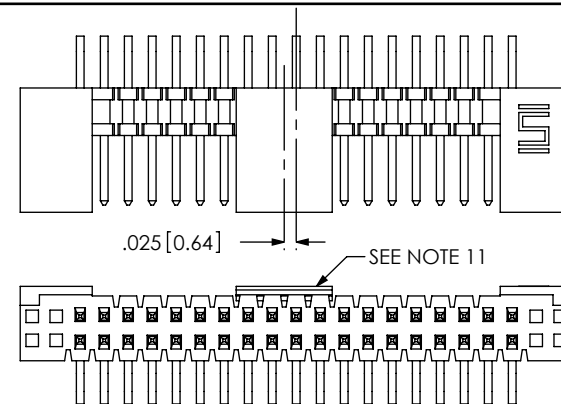
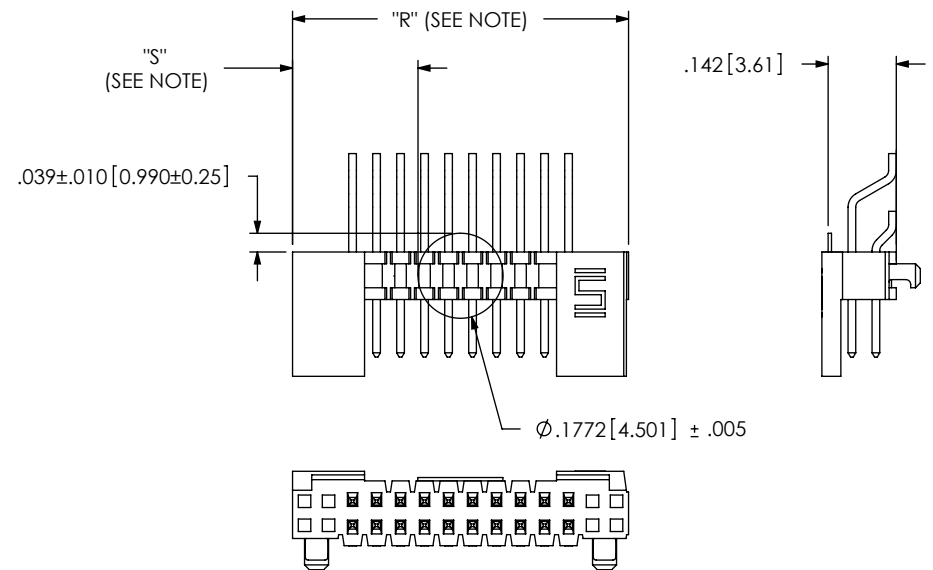


FIG. 4

FSH-119-XX-XX-RA-XX

SHOWN

F:\DWG\MISC\MKTG\FSH-1XX-XX-XXX-XX-X-XX-MKT.SLDDRW

PROPRIETARY NOTE

THIS DOCUMENT CONTAINS INFORMATION CONFIDENTIAL AND PROPRIETARY TO SAMTEC, INC. AND SHALL NOT BE REPRODUCED OR TRANSFERRED TO OTHER DOCUMENTS OR DISCLOSED TO OTHERS OR USED FOR ANY PURPOSE OTHER THAN THAT WHICH IT WAS OBTAINED WITHOUT THE EXPRESSED WRITTEN CONSENT OF SAMTEC, INC.

DO NOT SCALE DRAWING

SHEET SCALE: 2.5:1



520 PARK EAST BLVD, NEW ALBANY, IN 47150
PHONE: 812-944-6733 FAX: 812-948-5047
e-Mail: info@SAMTEC.com code: 55322

DESCRIPTION:
.050 SHROUDED TERMINAL ASSEMBLY

DWG. NO.
FSH-1XX-XX-XXX-XX-XX-X-XX

BY: DEANP 9/8/1999 SHEET 2 OF 2