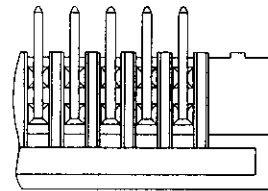
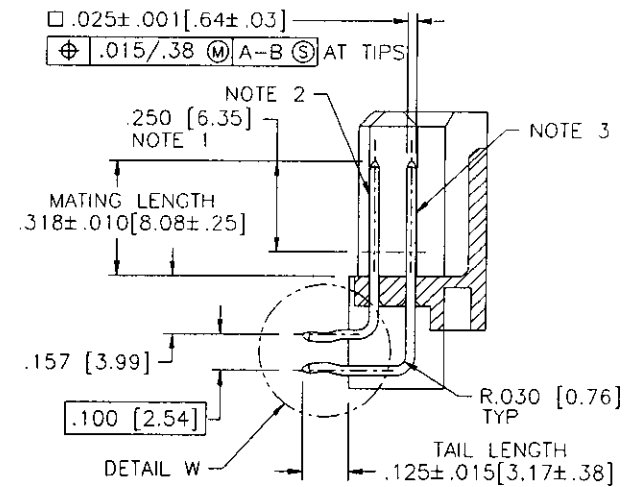
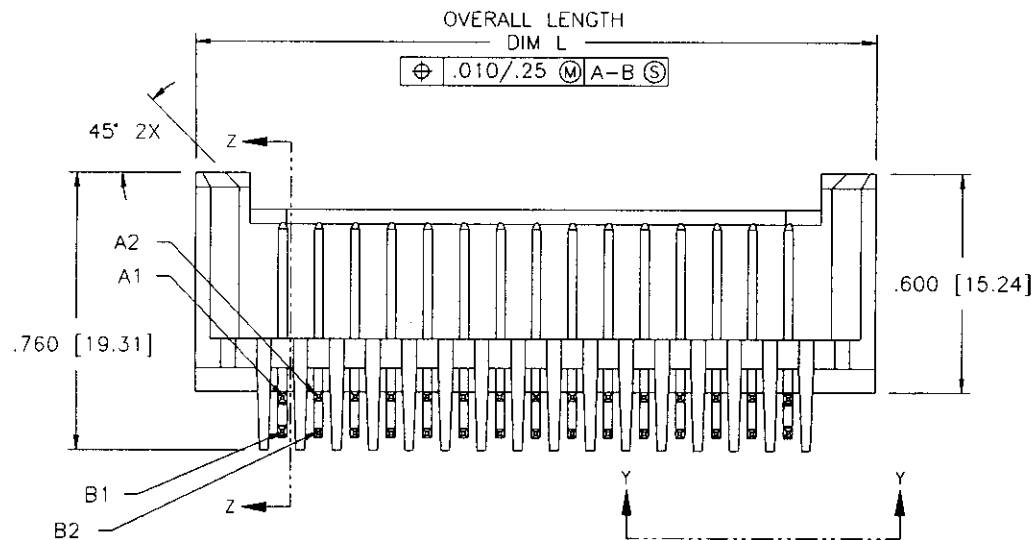
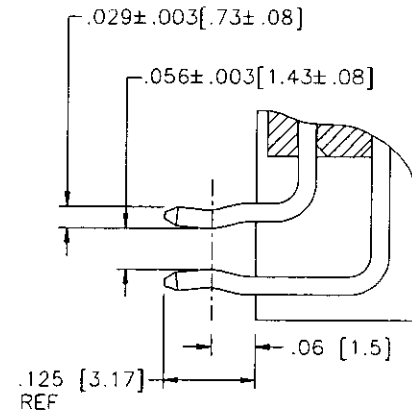
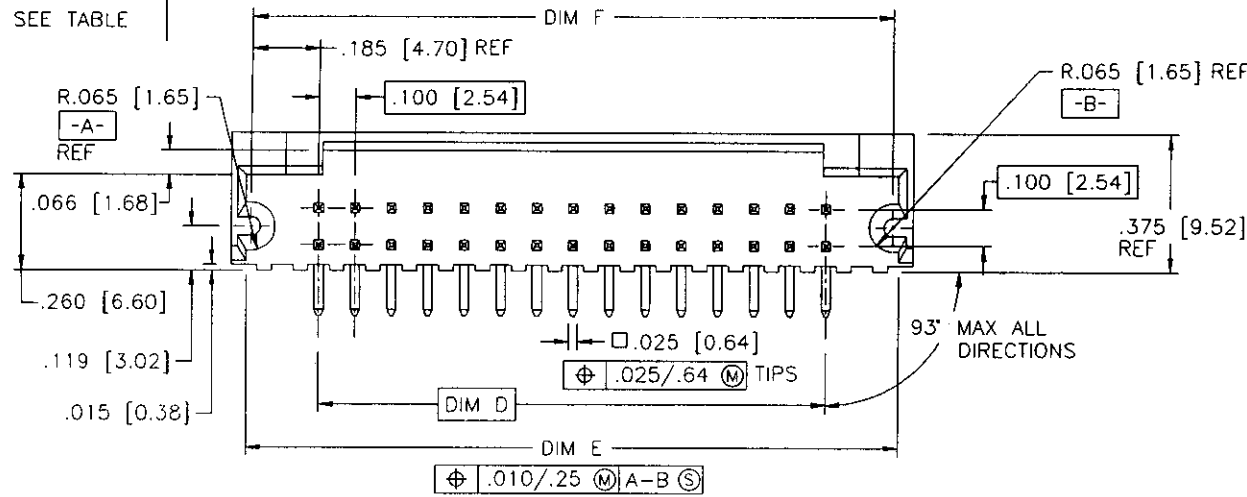


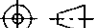

Tous droits strictement reserves. Reproduction ou communication a des tiers interdite sous quelque forme que ce soit sans autorisation écrite du propriétaire.  
Propriete de ©BERG ELECTRONICS. Droits de reproduction BERG ELECTRONICS INC.

**BERG**  
ELECTRONICS

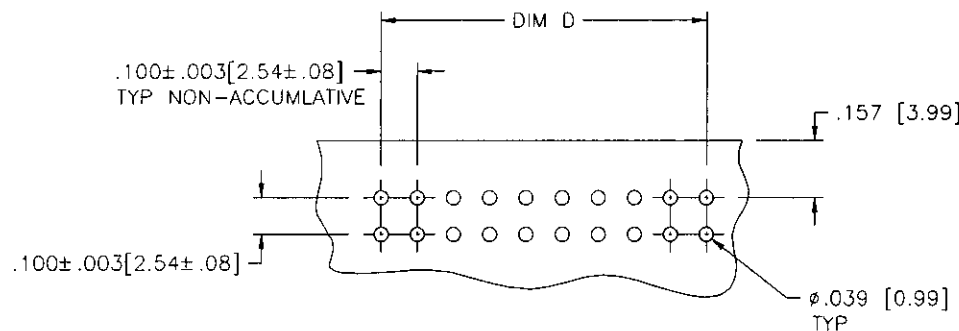
All rights strictly reserved. Reproduction or issue to third parties in any form whatever is not permitted without written authority from the proprietor.  
Property of ©BERG ELECTRONICS Copyright BERG ELECTRONICS INC.

PRODUCT NO.  
SEE TABLE



mat'l. code				-				tolerances unless otherwise specified				CUSTOMER COPY		<b>BERG</b> ELECTRONICS			
ltr	ecn no	dr	date	linear	.XX ±.01/.X ±.3				projection 	title RIGHT ANGLE 2 ROW GUIDE PIN HEADER WITH RETENTION							
A	V12177	MSC	8/13/91		xxx ±.005/.xx ±.13												
B	V50833	MSC	8/3/95		xxxx ±.0020/.xxx ±.051												
				angles	0° ± 2°												
				dr	M.CLOUSER		8/13/91		INCH/MM 	product family				HEADER		code	
				engr	S.AURAND		8/13/91			size				dwg no		-	
				chr	S.AURAND		8/13/91										
				appd	S.AURAND		8/13/91		scale	2/1		A		87255			
sheet index	revision	B	B	B	B	B	B	B									
	sheet	1	2	3	4	5	6										

PRODUCT NO. NOTE 4	SIZE NOTE 4	PLATING REF	KINK POS.
87255-005 THRU 87255-100	2 X 5 THRU 2 X 100	30u"/.76u Au OVER 50u"/1.27u Ni	NOTE 3
87255-105 THRU 87255-200	2 X 5 THRU 2 X 100	15u"/.38u Au OVER 50u"/1.27u Ni	NOTE 3
87255-205 THRU 87255-300	2 X 5 THRU 2 X 100	30u"/.76u GXT OVER 50u"/1.27u Ni	NOTE 3
87255-305 THRU 87255-400	2 X 5 THRU 2 X 100	15u"/.38u GXT OVER 50u"/1.27u Ni	NOTE 3



RECOMMENDED PC BOARD  
HOLE LAYOUT

NOTES:

- ① MOLDING MATERIAL: 20% MIN GLASS FLED POLYESTER PER UL 94 V-0 COLOR-BLACK.
- ② PIN RETENTION TO BE 3 LBS / 1.36 KG MIN PER PIN IN EITHER DIRECTION
- ③ RETENTION FEATURE (KINK) LOCATED TWO PAIRS EACH END 2X25 AND LARGER. RETENTION FEATURE (KINK) LOCATED ON 2 PAIR OF PINS IN THE CENTER OF PARTS SMALLER THAN 2X25.
- ④ -XXX REPRESENTS NO. OF COLUMNS (i.e. 2 x 5 PART IS -005).  
-001 THRU -004 ARE NOT AVAILABLE.  
-005 THRU -100 ARE AVAILABLE.

mat'l. code				tolerances unless otherwise specified				CUSTOMER COPY		<b>BERG</b> ELECTRONICS	
ltr	ecn no	dr	date	linear	.xx ± .01 / .x ± .3			projection	title RIGHT ANGLE 2 ROW GUIDE PIN HEADER WITH RETENTION		
B					.xxx ± .005 / .xx ± .13						
					.xxxx ± .0020 / .xxx ± .051						
				angles	0° ± 2°			INCH/MM	product family HEADER		
				dr	M.CLOUSER	8/13/91	scale 2/1				
				enr	S.AURAND	8/13/91					
				chr	S.AURAND	8/13/91		A	87255	sheet 2 of	
				appd	S.AURAND	8/13/91					
sheet index	revision	sheet									

Tous droits strictement reserves. Reproduction ou communication a des tiers interdite sous quelque forme que ce soit sans autorisation ecrite du proprietaire.  
Propriete de ©BERG ELECTRONICS. Droits de reproduction BERG ELECTRONICS INC.



All rights strictly reserved. Reproduction or issue to third parties in any form whatever is not permitted without written authority from the proprietor.  
Property of ©BERG ELECTRONICS Copyright BERG ELECTRONICS INC.

PRODUCT NO.	SIZE	OVERALL LENGTH DIM L	DIM D	DIM E	DIM F
87255-X01	UNAVAILABLE				
-X02					
-X03					
-X04	UNAVAILABLE				
-X05	2 X 5	.88/22.35	.400/10.16	.80/20.32	.77/19.55
-X06	2 X 6	.98/24.89	.500/12.70	.90/22.86	.87/22.09
-X07	2 X 7	1.08/27.43	.600/15.24	1.00/25.40	.97/24.63
-X08	2 X 8	1.18/29.97	.700/17.78	1.10/27.94	1.07/27.17
-X09	2 X 9	1.28/32.51	.800/20.32	1.20/30.48	1.17/29.71
-X10	2 X 10	1.38/35.05	.900/22.86	1.30/33.02	1.27/32.25
-X11	2 X 11	1.48/37.59	1.000/25.40	1.40/35.56	1.37/34.79
-X12	2 X 12	1.58/40.13	1.100/27.94	1.50/38.10	1.47/37.33
-X13	2 X 13	1.68/42.67	1.200/30.48	1.60/40.64	1.57/39.87
-X14	2 X 14	1.78/45.21	1.300/33.02	1.70/43.18	1.67/42.41
-X15	2 X 15	1.88/47.75	1.400/35.56	1.80/45.72	1.77/44.95
-X16	2 X 16	1.98/50.29	1.500/38.10	1.90/48.26	1.87/47.49
-X17	2 X 17	2.08/52.83	1.600/40.64	2.00/50.80	1.97/50.03
-X18	2 X 18	2.18/55.37	1.700/43.18	2.10/53.34	2.07/52.57
-X19	2 X 19	2.28/57.91	1.800/45.72	2.20/55.88	2.17/55.11
-X20	2 X 20	2.38/60.45	1.900/48.26	2.30/58.42	2.27/57.65
-X21	2 X 21	2.48/62.99	2.000/50.80	2.40/60.96	2.37/60.19
-X22	2 X 22	2.58/65.53	2.100/53.34	2.50/63.50	2.47/62.73
-X23	2 X 23	2.68/68.07	2.200/55.88	2.60/66.04	2.57/65.27
-X24	2 X 24	2.78/70.61	2.300/58.42	2.70/68.58	2.67/67.81
87255-X25	2 X 25	2.88/73.15	2.400/60.96	2.80/71.12	2.77/70.35

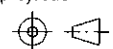
mat'l. code				tolerances unless otherwise specified		CUSTOMER COPY		<b>BERG ELECTRONICS</b>	
ltr	ecn no	dr	date	linear	.xx ±.01/.X ±.3	projection		title	
B					.xxx ±.005/.xx ±.13			RIGHT ANGLE 2 ROW GUIDE	
					.xxxx ±.0020/.xxx ±.051			PIN HEADER WITH RETENTION	
				angles	0° ± 2°	INCH/MM		product family	code
				dr	M.CLOUSER 8/13/91			HEADER	
				engr	S.AURAND 8/13/91				
				chr	S.AURAND 8/13/91	scale		size	dwg no
				appd	S.AURAND 8/13/91	1/1		A	87255
sheet index	revision sheet								sheet 3 of

Tous droits strictement reserves. Reproduction ou communication a des tiers interdite sous quelque forme que ce soit sans autorisation écrite du propriétaire.  
Propriete de ©BERG ELECTRONICS. Droits de reproduction BERG ELECTRONICS INC.

**BERG**  
ELECTRONICS

All rights strictly reserved. Reproduction or issue to third parties in any form whatever is not permitted without written authority from the proprietor.  
Property of ©BERG ELECTRONICS Copyright BERG ELECTRONICS INC.

PRODUCT NO.	SIZE	OVERALL LENGTH DIM L	DIM D	DIM E	DIM F
87255-X26	2 X 26	2.98/75.69	2.500/63.50	2.90/73.66	2.87/72.89
-X27	2 X 27	3.08/78.23	2.600/66.04	3.00/76.20	2.97/75.43
-X28	2 X 28	3.18/80.77	2.700/68.58	3.10/78.74	3.07/77.97
-X29	2 X 29	3.28/83.31	2.800/71.12	3.20/81.28	3.17/80.51
-X30	2 X 30	3.38/85.85	2.900/73.66	3.30/83.82	3.27/83.05
-X31	2 X 31	3.48/88.39	3.000/76.20	3.40/86.36	3.37/85.59
-X32	2 X 32	3.58/90.93	3.100/78.74	3.50/88.90	3.47/88.13
-X33	2 X 33	3.68/93.47	3.200/81.28	3.60/91.44	3.57/90.67
-X34	2 X 34	3.78/96.01	3.300/83.82	3.70/93.98	3.67/93.21
-X35	2 X 35	3.88/98.55	3.400/86.36	3.80/96.52	3.77/95.75
-X36	2 X 36	3.98/101.09	3.500/88.90	3.90/99.06	3.87/98.29
-X37	2 X 37	4.08/103.63	3.600/91.44	4.00/101.60	3.97/100.83
-X38	2 X 38	4.18/106.17	3.700/93.98	4.10/104.14	4.07/103.37
-X39	2 X 39	4.28/108.71	3.800/96.52	4.20/106.68	4.17/105.91
-X40	2 X 40	4.38/111.25	3.900/99.06	4.30/109.22	4.27/108.45
-X41	2 X 41	4.48/113.79	4.000/101.60	4.40/111.76	4.37/110.99
-X42	2 X 42	4.58/116.33	4.100/104.14	4.50/114.30	4.47/113.53
-X43	2 X 43	4.68/118.87	4.200/106.68	4.60/116.84	4.57/116.07
-X44	2 X 44	4.78/121.41	4.300/109.22	4.70/119.38	4.67/118.61
-X45	2 X 45	4.88/123.95	4.400/111.76	4.80/121.92	4.77/121.15
-X46	2 X 46	4.98/126.49	4.500/114.30	4.90/124.46	4.87/123.69
-X47	2 X 47	5.08/129.03	4.600/116.84	5.00/127.00	4.97/126.23
-X48	2 X 48	5.18/131.57	4.700/119.38	5.10/129.54	5.07/128.77
-X49	2 X 49	5.28/134.11	4.800/121.92	5.20/132.08	5.17/131.31
87255-X50	2 X 50	5.38/136.65	4.900/124.46	5.30/134.62	5.27/133.85

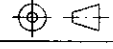
mat'l. code				tolerances unless otherwise specified				CUSTOMER COPY		<b>BERG</b> ELECTRONICS			
l/r	ecn no	dr	date	linear	.xx ±.01/.X ±.3			projection 	title				
B					xxx ±.005/.xx ±.13				RIGHT ANGLE 2 ROW GUIDE				
					xxxx ±.0020/.xxx ±.051				PIN HEADER WITH RETENTION				
					angles	0° ± 2°			product family				
					dr	M.CLOUSER	8/13/91		HEADER				
				enr	S.AURAND	8/13/91	code			-			
				chr	S.AURAND	8/13/91	size			dwg no			
				appd	S.AURAND	8/13/91	scale			A 87255			
sheet index				revision sheet				1/1				sheet 4 of	

Tous droits strictement reserves. Reproduction ou communication a des tiers interdite sous quelque forme que ce soit sans autorisation écrite du propriétaire.  
Propriete de ©BERG ELECTRONICS. Droits de reproduction BERG ELECTRONICS INC.

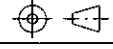
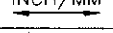
**BERG**  
ELECTRONICS

All rights strictly reserved. Reproduction or issue to third parties in any form whatever is not permitted without written authority from the proprietor.  
Property of ©BERG ELECTRONICS Copyright BERG ELECTRONICS INC.

PRODUCT NO.	SIZE	OVERALL LENGTH DIM L	DIM D	DIM E	DIM F
87255-X51	2 X 51	5.48/139.19	5.000/127.00	5.40/137.16	5.37/136.39
-X52	2 X 52	5.58/141.73	5.100/129.54	5.50/139.70	5.47/138.93
-X53	2 X 53	5.68/144.27	5.200/132.08	5.60/142.24	5.57/141.47
-X54	2 X 54	5.78/146.81	5.300/134.62	5.70/144.78	5.67/144.01
-X55	2 X 55	5.88/149.35	5.400/137.16	5.80/147.32	5.77/146.55
-X56	2 X 56	5.98/151.89	5.500/139.70	5.90/149.86	5.87/149.09
-X57	2 X 57	6.08/154.43	5.600/142.24	6.00/152.40	5.97/151.63
-X58	2 X 58	6.18/156.97	5.700/144.78	6.10/154.94	6.07/154.17
-X59	2 X 59	6.28/159.51	5.800/147.32	6.20/157.48	6.17/156.71
-X60	2 X 60	6.38/162.05	5.900/149.86	6.30/160.02	6.27/159.25
-X61	2 X 61	6.48/164.59	6.000/152.40	6.40/162.56	6.37/161.79
-X62	2 X 62	6.58/167.13	6.100/154.94	6.50/165.10	6.47/164.33
-X63	2 X 63	6.68/169.67	6.200/157.48	6.60/167.64	6.57/166.87
-X64	2 X 64	6.78/172.21	6.300/160.02	6.70/170.18	6.67/169.41
-X65	2 X 65	6.88/174.75	6.400/162.56	6.80/172.72	6.77/171.95
-X66	2 X 66	6.98/177.29	6.500/165.10	6.90/175.26	6.87/174.49
-X67	2 X 67	7.08/179.83	6.600/167.64	7.00/177.80	6.97/177.03
-X68	2 X 68	7.18/182.37	6.700/170.18	7.10/180.34	7.07/179.57
-X69	2 X 69	7.28/184.91	6.800/172.72	7.20/182.88	7.17/182.11
-X70	2 X 70	7.38/187.45	6.900/175.26	7.30/185.42	7.27/184.65
-X71	2 X 71	7.48/189.99	7.000/177.80	7.40/187.96	6.37/161.79
-X72	2 X 72	7.58/192.53	7.100/180.34	7.50/190.50	6.47/164.33
-X73	2 X 73	7.68/195.07	7.200/182.88	7.60/193.04	6.57/166.87
-X74	2 X 74	7.78/197.61	7.300/185.42	7.70/195.58	6.67/169.41
87255-X75	2 X 75	7.88/200.15	7.400/187.96	7.80/198.12	6.77/171.95

mat'l. code				tolerances unless otherwise specified				CUSTOMER COPY		<b>BERG</b> ELECTRONICS	
lfr	ecn no	dr	date	linear	.XX ±.01/.X ±.3			projection 	title		
B					.XXX ±.005/.XX ±.13				RIGHT ANGLE 2 ROW GUIDE		
					.XXXX ±.0020/.XXX ±.051				PIN HEADER WITH RETENTION		
					angles Ø ± 2"				product family		
					dr M.CLOUSER 8/13/91				HEADER		
				engr	S.AURAND	8/13/91	INCH/MM		size	dwg no	code
				chr	S.AURAND	8/13/91	scale		-		
				appd	S.AURAND	8/13/91	1/1		A 87255		
sheet index	revision sheet										sheet 5 of

PRODUCT NO.	SIZE	OVERALL LENGTH DIM L	DIM D	DIM E	DIM F
87255-X76	2 X 76	7.98/202.69	7.500/190.50	7.90/200.66	6.87/174.49
-X77	2 X 77	8.08/205.23	7.600/193.04	8.00/203.20	6.97/177.03
-X78	2 X 78	8.18/207.77	7.700/195.58	8.10/205.74	7.07/179.57
-X79	2 X 79	8.28/210.31	7.800/198.12	8.20/208.28	7.17/182.11
-X80	2 X 80	8.38/212.85	7.900/200.66	8.30/210.82	7.27/184.65
-X81	2 X 81	8.48/215.39	8.000/203.20	8.40/213.36	7.37/187.19
-X82	2 X 82	8.58/217.93	8.100/205.74	8.50/215.90	7.47/189.73
-X83	2 X 83	8.68/220.47	8.200/208.28	8.60/218.44	7.57/192.27
-X84	2 X 84	8.78/223.01	8.300/210.82	8.70/220.98	7.67/194.81
-X85	2 X 85	8.88/225.55	8.400/213.36	8.80/223.52	7.77/197.35
-X86	2 X 86	8.98/228.09	8.500/215.90	8.90/226.06	7.87/199.89
-X87	2 X 87	9.08/230.63	8.600/218.44	9.00/228.60	7.97/202.43
-X88	2 X 88	9.18/233.17	8.700/220.98	9.10/231.14	8.07/204.97
-X89	2 X 89	9.28/235.71	8.800/223.52	9.20/233.68	8.17/207.51
-X90	2 X 90	9.38/238.25	8.900/226.06	9.30/236.22	8.27/210.05
-X91	2 X 91	9.48/240.79	9.000/228.60	9.40/238.76	8.37/212.59
-X92	2 X 92	9.58/243.33	9.100/231.14	9.50/241.30	8.47/215.13
-X93	2 X 93	9.68/245.87	9.200/233.68	9.60/243.84	8.57/217.67
-X94	2 X 94	9.78/248.41	9.300/236.22	9.70/246.38	8.67/220.21
-X95	2 X 95	9.88/250.95	9.400/238.76	9.80/248.92	8.77/222.75
-X96	2 X 96	9.98/253.49	9.500/241.30	9.90/251.46	8.87/225.29
-X97	2 X 97	10.08/256.03	9.600/243.84	10.00/254.00	8.97/227.83
-X98	2 X 98	10.18/258.57	9.700/246.38	10.10/256.54	9.07/230.37
-X99	2 X 99	10.28/261.11	9.800/248.92	10.20/259.08	9.17/232.91
87255-X00	2 X 100	10.38/263.65	9.900/251.46	10.30/261.62	9.27/235.45

mat'l. code				tolerances unless otherwise specified				CUSTOMER COPY		<b>BERG</b> ELECTRONICS	
lfr	ecr no	dr	date	linear	.XX ±.01/.X ±.3			projection 	title		
B					.XXX ±.005/.XX ±.13				RIGHT ANGLE 2 ROW GUIDE		
					.XXX ±.0020/.XXX ±.051				PIN HEADER WITH RETENTION		
				angles	0° ± 2°			INCH/MM 	product family		code
				dr	M.CLOUSER	8/3/95			HEADER		
				enr	L.FYE	8/3/95			size		dwg no
				chr	L.FYE	8/3/95			A		87255
				appd	L.FYE	8/3/95		scale	1/1		sheet 6 of
sheet index	revision sheet										