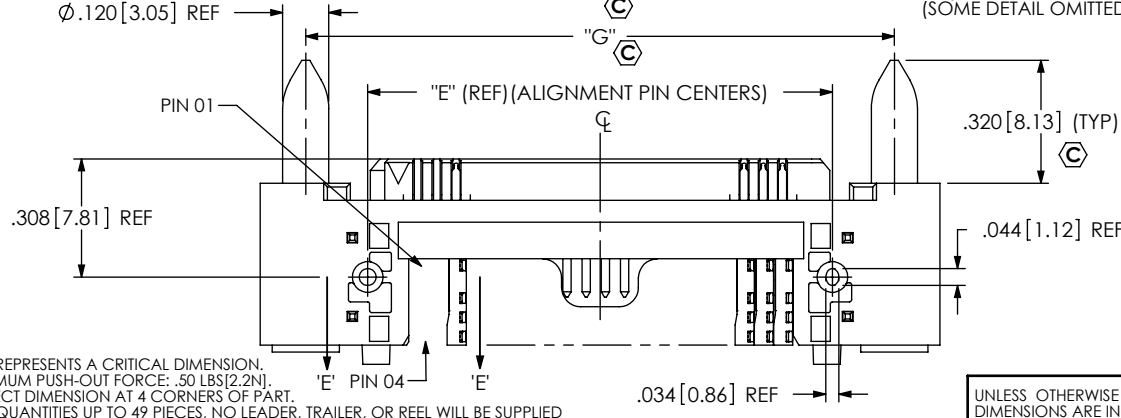
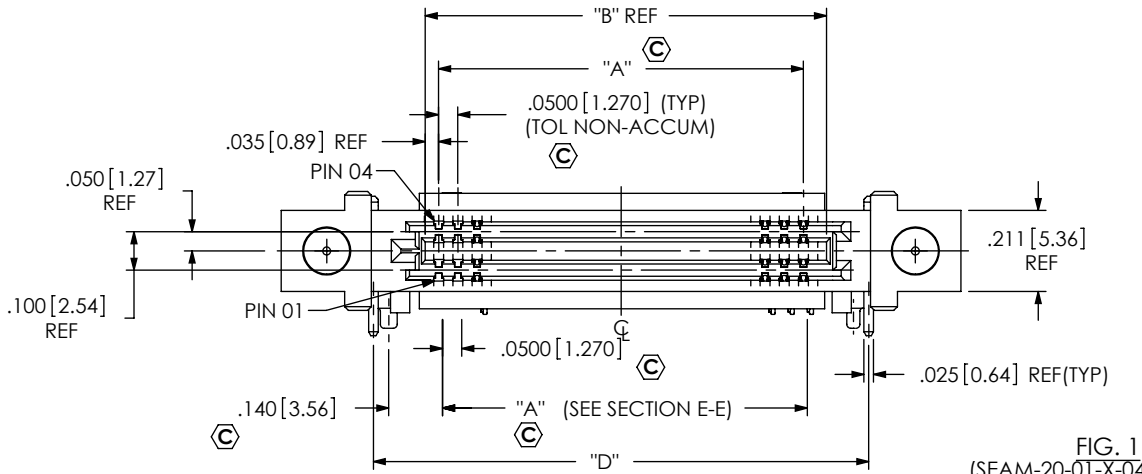
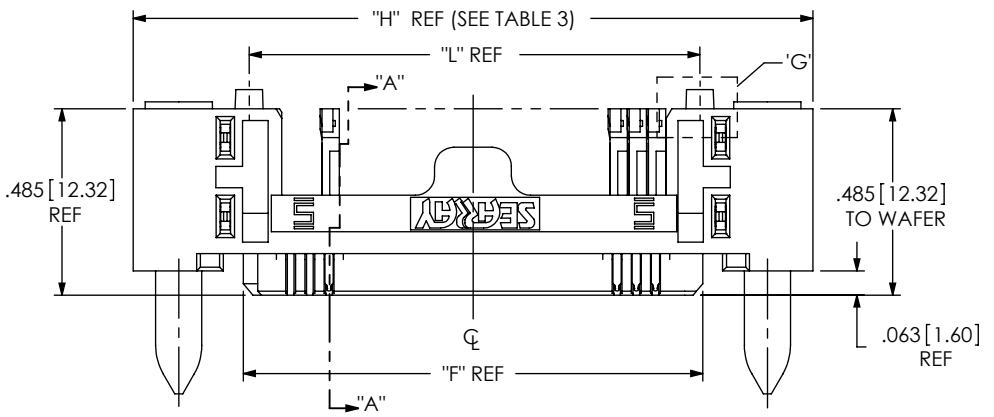


DO NOT SCALE FROM THIS PRINT



- NOTES:
- ⊗ REPRESENTS A CRITICAL DIMENSION.
 - MINIMUM PUSH-OUT FORCE: .50 LBS[2.2N].
 - INSPECT DIMENSION AT 4 CORNERS OF PART.
 - FOR QUANTITIES UP TO 49 PIECES, NO LEADER, TRAILER, OR REEL WILL BE SUPPLIED FOR QUANTITIES OF 50-124 PIECES, NO LEADER OR TRAILER WILL BE SUPPLIED.
 - NOTE DELETED
 - FEATURE REQUIRED FOR VISION INSPECTION
 - ATTACH LABEL "SEAX-0001" TO EACH TAPE & REEL PACKAGE.
 - K OPTION REQUIRES 125 PIECE MINIMUM ORDER.

TABLE 1

No. OF POS. PER ROW	"A"	"B"	"D"	"E"	"F"	"L"
-20	0.950 [24.13]	1.045 [26.54]	1.290 [32.77]	1.210 [30.73]	1.196 [30.38]	1.174 [29.82]
-30	1.450 [36.83]	1.545 [39.24]	1.790 [45.47]	1.710 [43.43]	1.696 [43.08]	1.674 [42.52]
-40	1.950 [49.53]	2.045 [51.94]	2.290 [58.17]	2.210 [56.13]	2.196 [55.78]	2.174 [55.22]
-50	2.450 [62.23]	2.545 [64.64]	2.790 [70.87]	2.710 [68.83]	2.696 [68.48]	2.674 [67.92]

SEAM-XX-XX-X-XX-X-RA-XX-TR

No. OF POSITIONS
-20,-30,-40,-50 (PER ROW)

LEAD STYLE
-01

PLATING SPECIFICATION
-S: SELECTIVE GOLD, MATTE TIN ON TAILS (USE SUB-IM-T-1M64-01-XX-S-X)
-L: LIGHT SELECTIVE GOLD, MATTE TIN ON TAILS (USE SUB-IM-T-1M64-XX-L-X)

No. OF ROWS
-04,-06,*08,*10 (* = NOT ENGINEERING APPROVED)

PACKAGING
-TR: TAPE & REEL (STANDARD PACKAGING) (SEE NOTE 4 AND 7)

OPTIONS
-GP: GUIDE POST (SEE NOTE 8)
-K: KAPTON PAD

RIGHT ANGLE
-RA

SOLDER COMPOSITION & STYLE
-T: 63% TIN / 37% LEAD CHARGE TAIL (USE SUB-IM-T-1M64-XX-XX-1)
-2: 95.5% TIN / 3.8 SILVER / 0.7% COPPER LEAD FREE CHARGE TAIL (USE SUB-IM-T-1M64-XX-XX-X-2)

TABLE 2

No. OF ROWS	"BODY CALLOUT"	"TERMINAL WAFER"	"WELD TAB"	"C"
-04	SEAM-XX-01-RA-04-XX	SUB-IM-T-1M64-01-04-XX	WT-28-01-T	0.205 [5.21]
-06	SEAM-XX-01-RA-06-XX	SUB-IM-T-1M64-01-06-XX	WT-28-02-T	0.305 [7.75]
*08	SEAM-XX-01-RA-08-XX	SUB-IM-T-1M64-01-08-XX	WT-28-02-T	0.405 [10.29]
*10	SEAM-XX-01-RA-10-XX	SUB-IM-T-1M64-01-10-XX	WT-28-02-T	0.505 [12.83]

(* = NOT ENGINEERING APPROVED)

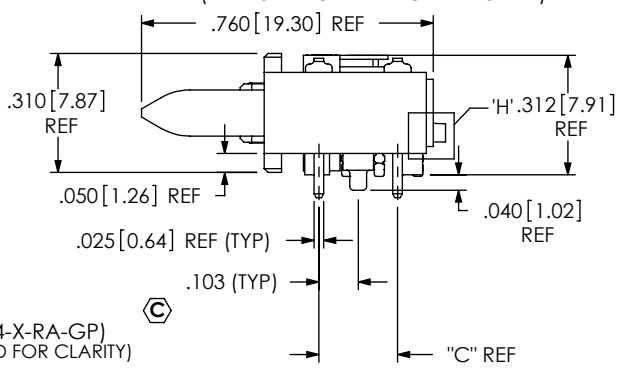


FIG. 1
(SEAM-20-01-X-04-X-RA-GP)
(SOME DETAIL OMITTED FOR CLARITY)

TABLE 3

STYLE	No. OF POS PER ROW	"G"	"H"
WITH -GP OPTION	-20	1.533 [38.94]	1.770 [44.96]
	-30	2.033 [51.64]	2.270 [57.66]
	-40	2.533 [64.34]	2.770 [70.36]
	-50	3.033 [77.04]	3.270 [83.06]
WITHOUT -GP OPTION	-20	N/A	1.440 [36.58]
	-30	N/A	1.940 [49.28]
	-40	N/A	2.440 [61.98]
	-50	N/A	2.940 [74.68]

UNLESS OTHERWISE SPECIFIED, DIMENSIONS ARE IN INCHES.

TOLERANCES ARE:
DECIMALS ANGLES
.XX: ±.01 [.3] 2°
.XXX: ±.005 [.13]
.XXXX: ±.0020 [.051]

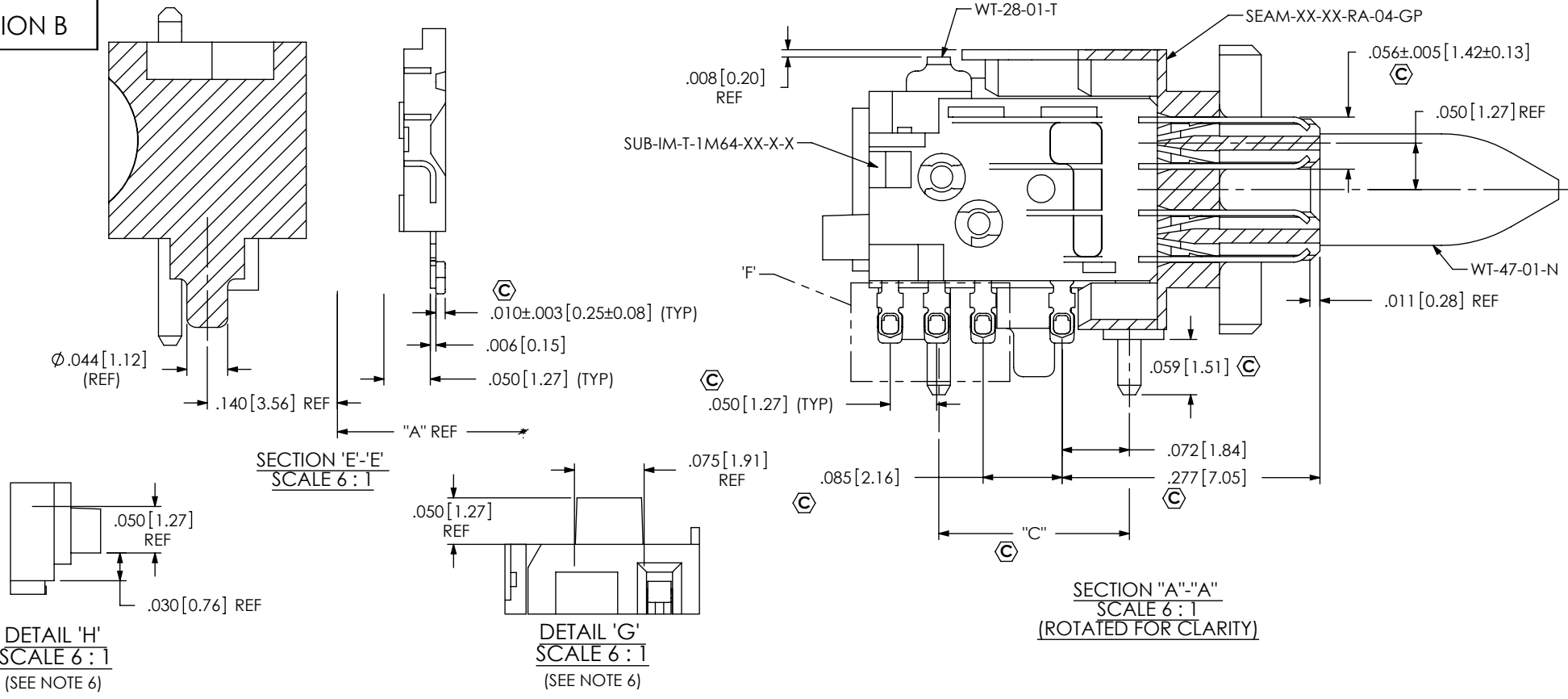
PROPRIETARY NOTE
THIS DOCUMENT CONTAINS INFORMATION CONFIDENTIAL AND PROPRIETARY TO SAMTEC, INC. AND SHALL NOT BE REPRODUCED OR TRANSFERRED TO OTHER DOCUMENTS OR DISCLOSED TO OTHERS OR USED FOR ANY PURPOSE OTHER THAN THAT WHICH IT WAS OBTAINED WITHOUT THE EXPRESSED WRITTEN CONSENT OF SAMTEC, INC.

MATERIAL: DO NOT SCALE DRAWING SHEET SCALE: 2:1
INSULATOR: LCP COLOR: BLACK
CONTACT: PHOS BRONZE .006 THICK

520 PARK EAST BLVD, NEW ALBANY, IN 47150
PHONE: 812-944-6733 FAX: 812-948-5047
e-Mail: info@SAMTEC.com code: 55322

DESCRIPTION:
SEAB-R BODY
DWG. NO.
SEAM-XX-XX-X-XX-X-RA-XX-TR
BY: R MUSSER 06/27/2008 SHEET 1 OF 4

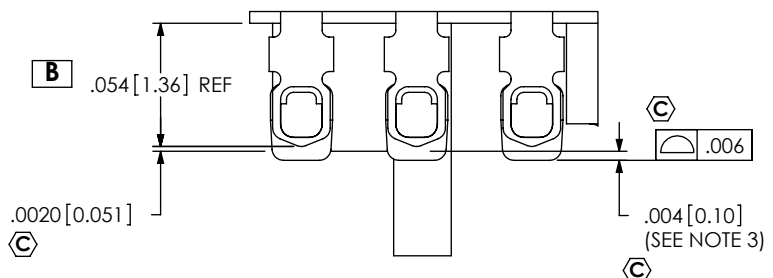
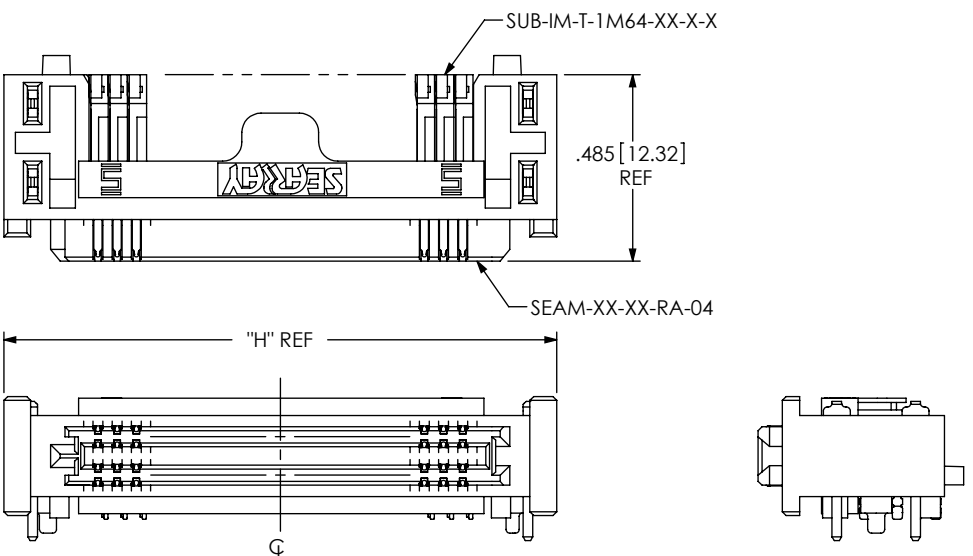
REVISION B



DETAIL 'H'
SCALE 6 : 1
(SEE NOTE 6)

DETAIL 'G'
SCALE 6 : 1
(SEE NOTE 6)

SECTION "A"-"A"
SCALE 6 : 1
(ROTATED FOR CLARITY)



DETAIL 'F'
SCALE 12 : 1

FIG. 2
(SEAM-20-01-X-04-X-RA SHOWN)
(SAME AS FIG. 1 EXCEPT AS NOTED)
(SOME DETAIL REMOVED FOR CLARITY)

PROPRIETARY NOTE
THIS DOCUMENT CONTAINS INFORMATION
CONFIDENTIAL AND PROPRIETARY TO
SAMTEC, INC. AND SHALL NOT BE REPRODUCED
OR TRANSFERRED TO OTHER DOCUMENTS OR
DISCLOSED TO OTHERS OR USED FOR ANY
PURPOSE OTHER THAN THAT WHICH IT WAS
OBTAINED WITHOUT THE EXPRESSED WRITTEN
CONSENT OF SAMTEC, INC.

DO NOT SCALE DRAWING

SHEET SCALE: 2:1

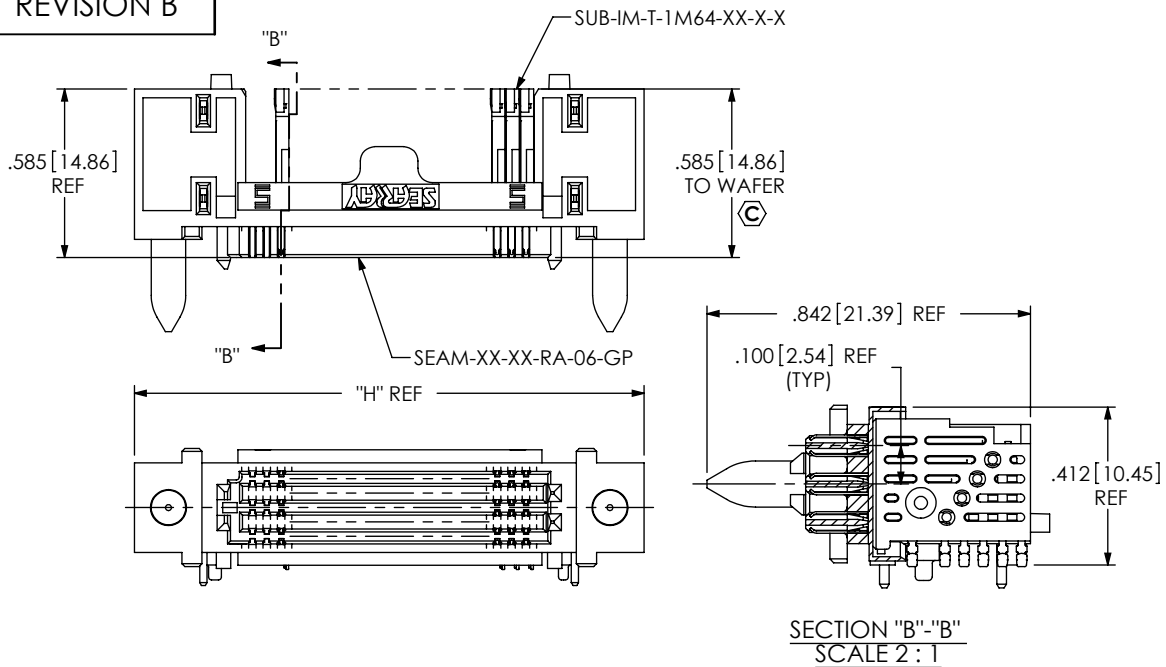


520 PARK EAST BLVD. NEW ALBANY, IN 47150
PHONE: 812-944-6733 FAX: 812-948-5047
e-Mail: info@SAMTEC.com code: 55322

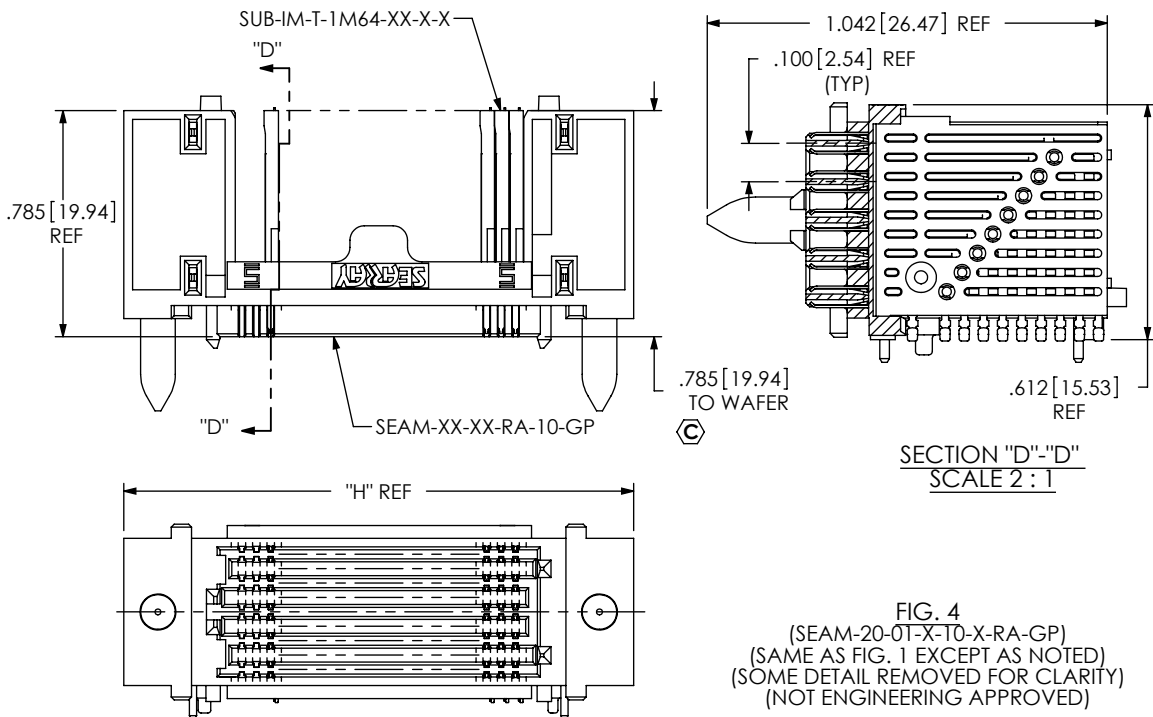
DESCRIPTION:
SEAB-RA BODY

DWG. NO.
SEAM-XX-XX-X-XX-X-RA-XX-TR

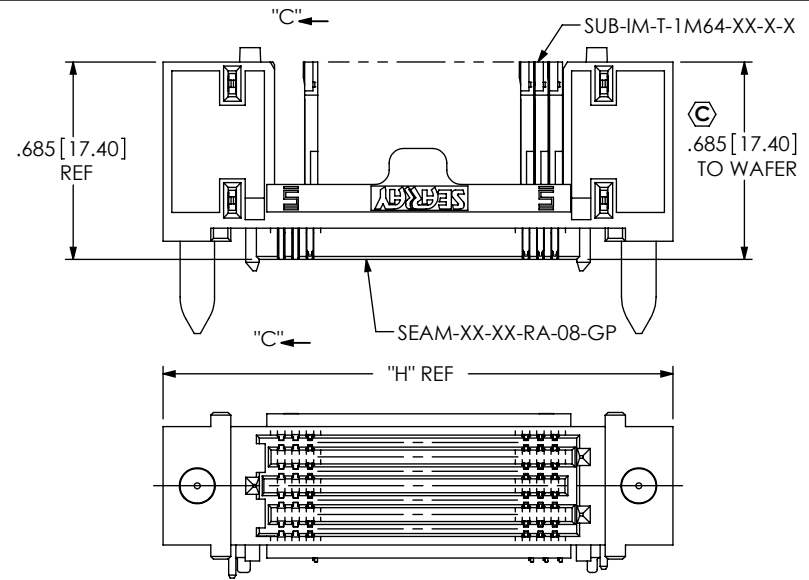
BY: R MUSSER 06/27/2008 SHEET 2 OF 4



SECTION "B"-"B"
 SCALE 2 : 1



SECTION "D"-"D"
 SCALE 2 : 1



SECTION "C"-"C"
 SCALE 2 : 1

PROPRIETARY NOTE
 THIS DOCUMENT CONTAINS INFORMATION
 CONFIDENTIAL AND PROPRIETARY TO
 SAMTEC, INC. AND SHALL NOT BE REPRODUCED
 OR TRANSFERRED TO OTHER DOCUMENTS OR
 DISCLOSED TO OTHERS OR USED FOR ANY
 PURPOSE OTHER THAN THAT WHICH IT WAS
 OBTAINED WITHOUT THE EXPRESSED WRITTEN
 CONSENT OF SAMTEC, INC.

DO NOT SCALE DRAWING

SHEET SCALE: 1:1

samtec

520 PARK EAST BLVD, NEW ALBANY, IN 47150
 PHONE: 812-944-6733 FAX: 812-948-5047
 e-Mail: info@SAMTEC.com code: 55322

DESCRIPTION:
 SEAB-RA BODY

DWG. NO.
 SEAM-XX-XX-X-XX-X-RA-XX-TR

BY: R MUSSER 06/27/2008 SHEET 3 OF 4

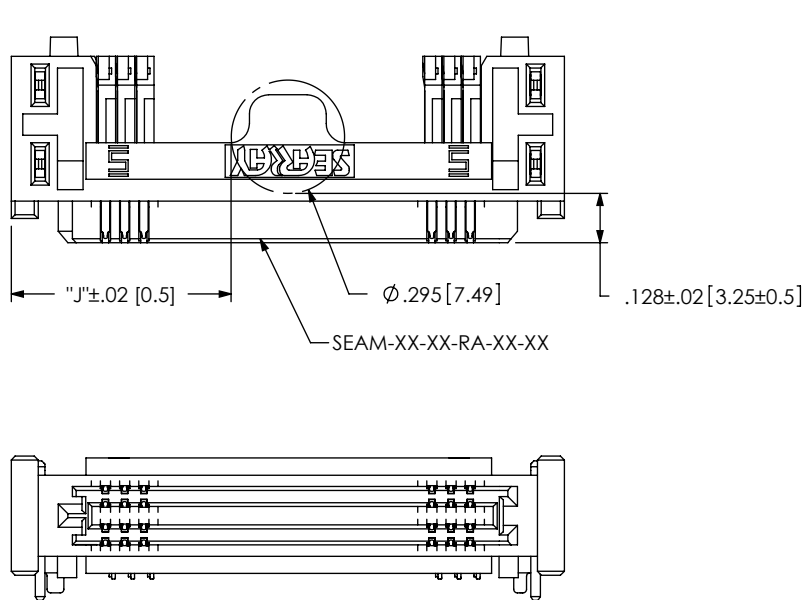



FIG. 6
-K OPTION
(USE K-DOT-.295-.406-.005)
(SEAM-20-01-X-04-X-RA-K SHOWN)

TABLE 4			
STYLE	No. OF POS PER ROW	"J"	
		WITH -GP OPTION	-20
-30	1.24		[31.4]
-40	1.74		[44.1]
WITHOUT -GP OPTION	-50	2.24	[56.8]
	-20	0.57	[14.5]
	-30	1.07	[27.2]
	-40	1.57	[39.9]
	-50	2.07	[52.6]

TABLE 5		
No. OF ROWS	"K"	
	-04	0.317
-06	0.417	[10.58]
-08	0.517	[13.12]
-10	0.617	[15.66]

CRITICAL DIMENSION INSPECTION INSTRUCTION TABLE		
ASSEMBLY OPERATION	START-UP INSPECTION INSPECT CODE A	IN-PROCESS INSPECTION INSPECT CODE B
FILL WAFERS		C1, C2, C3, C4, C5, C7, C9, C11, C12, C14, C15, C16, C17, C18
FILL WELD TABS		C6, C8, C10, C13
FILL GUIDE POSTS		C19, C20
FINISHED ASSEMBLY		C1, C2, C3, C4, C5, C7, C9, C11, C12, C14, C15, C16, C17, C18, C19

<p>PROPRIETARY NOTE</p> <p>THIS DOCUMENT CONTAINS INFORMATION CONFIDENTIAL AND PROPRIETARY TO SAMTEC, INC. AND SHALL NOT BE REPRODUCED OR TRANSFERRED TO OTHER DOCUMENTS OR DISCLOSED TO OTHERS OR USED FOR ANY PURPOSE OTHER THAN THAT WHICH IT WAS OBTAINED WITHOUT THE EXPRESSED WRITTEN CONSENT OF SAMTEC, INC.</p> <p>DO NOT SCALE DRAWING</p> <p>SHEET SCALE: 2:1</p>	 <p>520 PARK EAST BLVD. NEW ALBANY, IN 47150 PHONE: 812-944-6733 FAX: 812-948-5047 e-Mail: info@SAMTEC.com code: 55322</p>	
	<p>DESCRIPTION: SEAB-RA BODY</p>	
	<p>DWG. NO. SEAM-XX-XX-X-XX-X-RA-XX-TR</p>	
	<p>BY: R MUSSER 06/27/2008</p>	<p>SHEET 4 OF 4</p>