

SPECIFICATIONS

Mechanical

Mating Force: 4Pounds max.
Unmating Force: 4Pounds max.
Durability: 1000 Cycles

Electrical

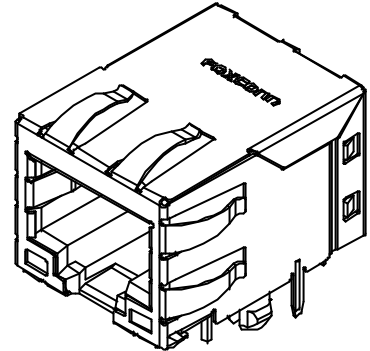
Current Rating: 1.5A max.
Contact Resistance: 50mW max.
Dielectric Withstanding Voltage: 1000V
Cross Talk: -40dB min @1-100MHz

Physical

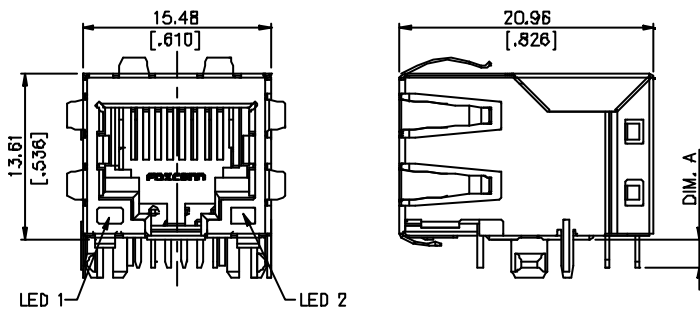
Housing: Thermoplastic, UL 94V-0 rated in Black Color
Contact: Copper Alloy
Shell: Copper Alloy
Operating Temperature: 0 to +70

Modular Jack

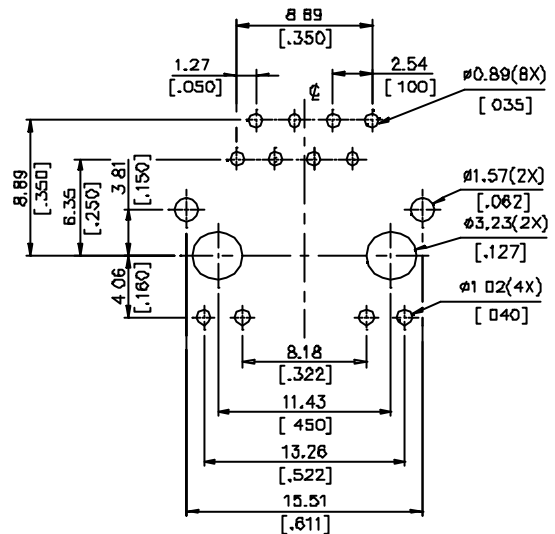
J1 Series
RJ45 1X1
R/A, T/H Type
1.27mm [.050"] Pitch



DRAWING



SCHEMATIC



RECOMMENDED P.C.B. LAYOUT

ORDERING INFORMATION

PRODUCT NO. : JI 5 1 0 1 * - * 00*

Series Prefix

JI=Jack,

Integrated w/PCB

Integration Type

5=CAT 5

Position Type

1=8P/8C

Configuration

0=1X1 T/D

Extension Code

S=Shielded, U=Unshielded

LED

PCB Attachment Method

1=Solder Tail

J151D1*-S00X (X=1,2,3)	3.21 [.126]
J151D1*-S004	2.29 [.090]
P/N	DIM. A

J15101B-S00*	Green	Green-Orange
J15101A-S00*	Green	Green-Yellow
J151018-S00*	Green	Red
J151018-S00*	Red	Green
J151017-S00*	Yellow	Red
J151016-S00*	Red	Yellow
J151015-S00*	Red	Red
J151014-S00*	Yellow	Yellow
J151013-S00*	Green	Yellow
J151012-S00*	Green	Green
J151011-S00*	Yellow	Green
J151010-S00*	None	
P/N	LED 1	LED 2