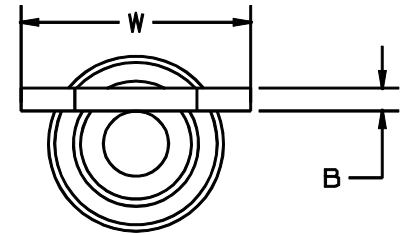


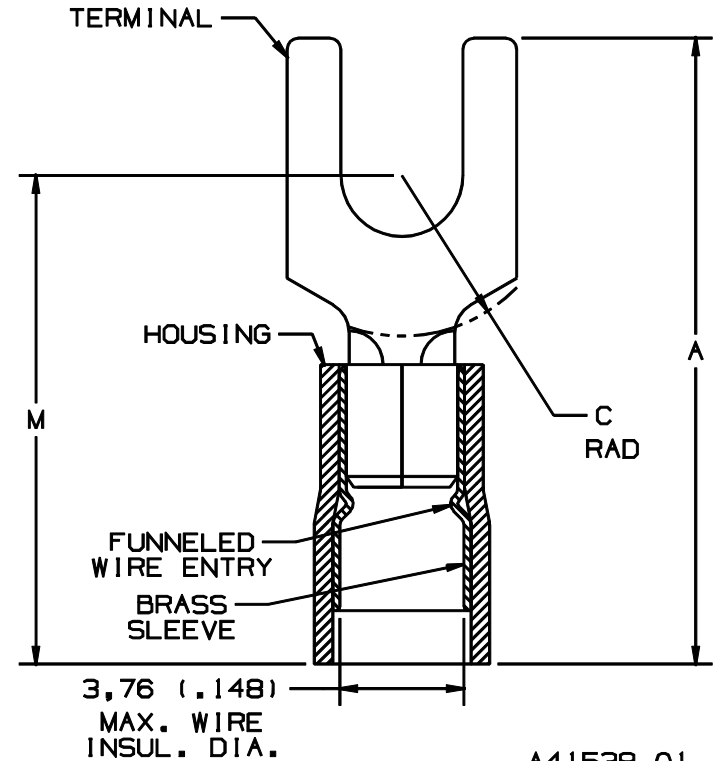
THIS COPY IS PROVIDED ON A RESTRICTED BASIS AND IS NOT TO BE USED IN ANY WAY DETRIMENTAL TO THE INTERESTS OF PANDUIT CORP.

PART NUMBER		STUD SIZE	WIRE RANGE mm <sup>2</sup>	DIMENSIONS mm				
PREFIX	PK			A ±.50	W ±.25	C ±.38	B ±.25	M ±.50
PMNF1-3F	-C -M	M3	0,5-1,5 (.22-18)	21,08 (.83)	5,84 (.23)	5,08 (.20)	,81 (.03)	17,53 (.69)
PMNF1-4F	-C -M	M4	0,5-1,5 (.22-18)	22,61 (.89)	8,13 (.32)	5,84 (.23)	,81 (.03)	18,29 (.72)
PMNF1-5F	-C -M	M5	0,5-1,5 (.22-18)	22,86 (.90)	8,89 (.35)	6,35 (.25)	,81 (.03)	18,80 (.74)
PMNF1-6F	-C -M	M6	0,5-1,5 (.22-18)	27,43 (1.08)	11,18 (.44)	8,38 (.33)	,81 (.03)	21,08 (.83)



NOTES:

- USED FOR:
  - A. 600V MAX. VOLTAGE RATING
  - B. 105°C (221°F) MAX. TEMP. RATING
  - C. STRANDED COPPER WIRE
- PACKAGE QTY:
  - A. STD: C=100
  - B. BULK: M=1000
- MATERIAL:
  - A. STAMPING: COPPER, TIN PLATED
  - B. HOUSING: NYLON, RED
- WIRE STRIP LENGTH:  $5,6^{+.8}_{-0}$  ( $7/32^{+1/32}_{-0}$ )
- INSTALLATION TOOLS: REF DWGS. A41522, A41523, A41524, A41525
- DIMENSIONS IN BRACKETS ARE IN INCHES OR AWG



							<b>PANDUIT</b> CORP.		TINLEY PARK, ILLINOIS		
01	10/97	TM		CHANGED DECIMAL POINTS TO COMMAS					0,5-1,5 mm <sup>2</sup> METRIC NYLON INSULATED, FUNNELED ENTRY FORK TERMINAL		
00	2/92	DL	SJ	RELEASED			00816	LA	KS		
REV	DATE	BY	CHK	DESCRIPTION	ECN #	CUST	PM	DRAWN BY	CHK'D	SCALE	DRAWING NO.
								DRL		NONE	A41538